

Job No.: J9S3540
Route: H
County: New Madrid

JOB SPECIAL PROVISIONS TABLE OF CONTENTS (ROADWAY)

(Job Special Provisions shall prevail over General Special Provisions whenever in conflict therewith.)

A.	General - Federal JSP-09-02G	1
B.	Contract Liquidated Damages JSP-13-01B	1
C.	Work Zone Traffic Management JSP-02-06J	2
D.	Emergency Provisions and Incident Management JSP-90-11A	3
E.	Project Contact for Contractor/Bidder Questions JSP-96-05	4
F.	Supplemental Revisions JSP-18-01R	4
G.	UTILITIES DSP-93-26F	7
H.	Restrictions for Migratory Birds NJSP-16-06A	9
I.	Liquidated Damages for Winter Months JSP-04-17A	10
J.	Fertilizer, Seeding, and Mulching	11
K.	Contractor Quality Control NJSP-15-42	11
L.	Modified Linear Grading Class 2	13
M.	Damage to Existing Roadways and Entrances	14
N.	Temporary Stream Crossings and Workpads	14
O.	Flap Gate	15
P.	Pipe Culverts	18
Q.	Protective Measures for Ditch Work In Illinois Chorus Frog Breeding Areas	18

	MISSOURI HIGHWAYS AND TRANSPORTATION COMMISSION 105 W. CAPITOL AVE. JEFFERSON CITY, MO 65102 Phone 1-888-275-6636
	GARVER 7401 NW Tiffany Springs Parkway, STE 330 Certificate of Authority: 2008013090 Consultant Phone: 816-298-6465
	If a seal is present on this sheet, JSP's have been electronically sealed and dated.
	JOB NUMBER: J9S3540 NEW MADRID COUNTY, MO DATE PREPARED: 12/7/2020
	ADDENDUM DATE:
Only the following items of the Job Special Provisions (Roadway) are authenticated by this seal: All	

JOB
SPECIAL PROVISION

A. General - Federal JSP-09-02G

1.0 Description. The Federal Government is participating in the cost of construction of this project. All applicable Federal laws, and the regulations made pursuant to such laws, shall be observed by the contractor, and the work will be subject to the inspection of the appropriate Federal Agency in the same manner as provided in Sec 105.10 of the Missouri Standard Specifications for Highway Construction with all revisions applicable to this bid and contract.

1.1 This contract requires payment of the prevailing hourly rate of wages for each craft or type of work required to execute the contract as determined by the Missouri Department of Labor and Industrial Relations and requires adherence to a schedule of minimum wages as determined by the United States Department of Labor. For work performed anywhere on this project, the contractor and the contractor's subcontractors shall pay the higher of these two applicable wage rates. State Wage Rates, Information on the Required Federal Aid Provisions, and the current Federal Wage Rates are available on the Missouri Department of Transportation web page at www.modot.org under "Doing Business with MoDOT", "Contractor Resources". Effective Wage Rates will be posted 10 days prior to the applicable bid opening. These supplemental bidding documents have important legal consequences. It shall be conclusively presumed that they are in the bidder's possession, and they have been reviewed and used by the bidder in the preparation of any bid submitted on this project.

1.2 The following documents are available on the Missouri Department of Transportation web page at www.modot.org under "Doing Business with MoDOT"; "Standards and Specifications". The effective version shall be determined by the letting date of the project.

General Provisions & Supplemental Specifications

Supplemental Plans to July 2021 Missouri Standard Plans
For Highway Construction

These supplemental bidding documents contain all current revisions to the published versions and have important legal consequences. It shall be conclusively presumed that they are in the bidder's possession, and they have been reviewed and used by the bidder in the preparation of any bid submitted on this project.

B. Contract Liquidated Damages JSP-13-01B

1.0 Description. Liquidated Damages for failure or delay in completing the work on time for this contract shall be in accordance with Sec 108.8. The liquidated damages include separate amounts for road user costs and contract administrative costs incurred by the Commission.

2.0 Period of Performance. Prosecution of work is expected to begin on the date specified below in accordance with Sec 108.2. Regardless of when the work is begun on this contract, all work shall be completed on or before the date specified below. Completion by this date shall be in accordance with the requirements of Sec 108.7.1.

Job No.: J9S3540
Route: H
County: New Madrid

Notice to Proceed: January 3, 2022
Completion Date: December 1, 2022

2.1 Calendar Days. The count of calendar days will begin on the date the contractor starts any construction operations on the project.

Job Number	Calendar Days	Daily Road User Cost
J9S3540	125	\$1,800

3.0 Liquidated Damages for Contract Administrative Costs. Should the contractor fail to complete the work on or before the completion date specified in Section 2.0, or within the number of calendar days specified in Section 2.1, whichever occurs first, the contractor will be charged contract administrative liquidated damages in accordance with Sec 108.8 in the amount of **\$250** per calendar day for each calendar day, or partial day thereof, that the work is not fully completed. For projects in combination, these damages will be charged in full for failure to complete one or more projects within the above specified completion date or calendar days.

4.0 Liquidated Damages for Road User Costs. Should the contractor fail to complete the work on or before the completion date specified in Section 2.0, or within the number of calendar days specified in Section 2.1, whichever occurs first, the contractor will be charged road user costs in accordance with Sec 108.8 in the amount specified in Section 2.1 for each calendar day, or partial day thereof, that the work is not fully completed. These damages are in addition to the contract administrative damages and any other damages as specified elsewhere in this contract.

C. Work Zone Traffic Management JSP-02-06J

1.0 Description. Work zone traffic management shall be in accordance with applicable portions of Division 100 and Division 600 of the Standard Specifications, and specifically as follows.

1.1 Maintaining Work Zones and Work Zone Reviews. The Work Zone Specialist (WZS) shall maintain work zones in accordance with Sec 616.3.3 and as further stated herein. The WZS shall coordinate and implement any changes approved by the engineer. The WZS shall ensure all traffic control devices are maintained in accordance with Sec 616, the work zone is operated within the hours specified by the engineer, and will not deviate from the specified hours without prior approval of the engineer. The WZS is responsible to manage work zone delay in accordance with these project provisions. When requested by the engineer, the WZS shall submit a weekly report that includes a review of work zone operations for the week. The report shall identify any problems encountered and corrective actions taken. Work zones are subject to unannounced inspections by the engineer and other departmental staff to corroborate the validity of the WZS's review and may require immediate corrective measures and/or additional work zone monitoring.

1.2 Work Zone Deficiencies. Failure to make corrections on time may result in the engineer suspending work. The suspension will be non-excusable and non-compensable regardless if road user costs are being charged for closures.

2.0 Traffic Management Schedule.

2.1 Traffic management schedules shall be submitted to the engineer for review prior to the start of work and prior to any revisions to the traffic management schedule. The traffic management

schedule shall include the proposed traffic control measures, the hours traffic control will be in place, and work hours.

2.2 The traffic management schedule shall conform to the limitations specified in Sec 616 regarding lane closures, traffic shifts, road closures and other width, height and weight restrictions.

2.3 The engineer shall be notified as soon as practical of any postponement due to weather, material or other circumstances.

2.4 In order to ensure minimal traffic interference, the contractor shall schedule lane closures for the absolute minimum amount of time required to complete the work. Lanes shall not be closed until material is available for continuous construction and the contractor is prepared to diligently pursue the work until the closed lane is opened to traffic.

3.0 Detours and Lane Closures.

3.1 The pre-closure notification static signs shown in the Traffic Control Plans shall be installed a minimum of two weeks prior to the planned closure of Route H. The closure date displayed on the signs must be modified in the planned closure date changes.

4.0 Basis of Payment. No direct payment will be made to the contractor to recover the cost of equipment, labor, materials or time required to fulfill the above provisions, unless specified elsewhere in the contract document. All authorized changes in the traffic control plan shall be provided for as specified in Sec 616.

D. Emergency Provisions and Incident Management JSP-90-11A

1.0 The contractor shall have communication equipment on the construction site or immediate access to other communication systems to request assistance from law enforcement or other emergency agencies for incident management. In case of traffic accidents or the need for law enforcement to direct or restore traffic flow through the job site, the contractor shall notify law enforcement or other emergency agencies immediately as needed. The area engineer's office shall also be notified when the contractor requests emergency assistance.

2.0 In addition to the 911 emergency telephone number for ambulance, fire or law enforcement services, the following agencies may also be notified for accident or emergency situation within the project limits.

Missouri Highway Patrol, Troop E – (573) 840-9500		
New Madrid County, MO		
Sheriff: 573-748-2516		

2.1 This list is not all inclusive. Notification of the need for wrecker or tow truck services will remain the responsibility of the appropriate law enforcement agency.

2.2 The contractor shall notify law enforcement and emergency agencies before the start of construction to request their cooperation and to provide coordination of services when emergencies arise during the construction at the project site. When the contractor completes this

notification with law enforcement and emergency agencies, a report shall be furnished to the engineer on the status of incident management.

3.0 No direct pay will be made to the contractor to recover the cost of the communication equipment, labor, materials or time required to fulfill the above provisions.

E. Project Contact for Contractor/Bidder Questions JSP-96-05

All questions concerning this project during the bidding process shall be forwarded to the project contact listed below.

Tim Pickett, Project Contact
Southeast District
2675 N Main
Sikeston, MO 63801

Telephone Number: 573-472-9003
Email: Timothy.Pickett@modot.mo.gov

All questions concerning the bid document preparation can be directed to the Central Office – Design at (573) 751-2876.

F. Supplemental Revisions JSP-18-01R

Compliance with [2 CFR 200.216 – Prohibition on Certain Telecommunications and Video Surveillance Services or Equipment](#).

The Missouri Highways and Transportation Commission shall not enter into a contract (or extend or renew a contract) using federal funds to procure or obtain equipment, services, or systems that uses covered telecommunications equipment or services as substantial or as critical technology as part of any system where the video surveillance and telecommunications equipment was produced by Huawei Technologies Company, ZTE Corporation, Hytera Communications Corporation, Hangzhou Hikvision Digital Technology Company, or Dahua Technology Company (or any subsidiary or affiliate of such entities).

Stormwater Compliance Requirements

1.0 Description. This provision requires the contractor to provide a Water Pollution Control Manager (WPCM) for any project that includes land disturbance on the project site and the total area of land disturbance, both on the project site, and all Off-site support areas, is one (1) acre or more. Regardless of the area of Off-site disturbance, if no land disturbance occurs on the project site, these provisions do not apply. When a WPCM is required, all sections within this provision shall be applicable, including assessment of specified Liquidated Damages for failure to correct Stormwater Deficiencies, as specified herein. This provision is in addition to any other stormwater, environmental, and land disturbance requirements specified elsewhere in the contract.

1.1 Definitions. The project site is defined as all areas designated on the plans, including temporary and permanent easements. The project site is equivalent to the “permitted site”, as defined in MoDOT’s State Operating Permit. An Off-site area is defined as any location off the project site the contractor utilizes for a dedicated project support function, such as, but not limited to, staging area, plant site, borrow area, or waste area.

1.2 Reporting of Off-Site Land Disturbance. If the project includes any planned land disturbance on the project site, prior to the start of work, the contractor shall submit a written report to the engineer that discloses all Off-site support areas where land disturbance is planned, the total acreage of anticipated land disturbance on those sites, and the land disturbance permit number(s). Upon request by the engineer, the contractor shall submit a copy of its land disturbance permit(s) for Off-site locations. Based on the total acreage of land disturbance, both on and Off-site, the engineer shall determine if these Stormwater Compliance Requirements shall apply. The Contractor shall immediately report any changes to the planned area of Off-site land disturbance. The Contractor is responsible for obtaining its own separate land disturbance permit for Off-site areas.

2.0 Water Pollution Control Manager (WPCM). The Contractor shall designate a competent person to serve as the Water Pollution Control Manager (WPCM) for projects meeting the description in Section 1.0. The Contractor shall ensure the WPCM completes all duties listed in Section 2.1.

2.1 Duties of the WPCM:

- (a) Be familiar with the stormwater requirements including the current MoDOT State Operating Permit for construction stormwater discharges/land disturbance activities; MoDOT’s statewide Stormwater Pollution Prevention Plan (SWPPP); the Corps of Engineers Section 404 Permit, when applicable; the project specific SWPPP, the Project’s Erosion & Sediment Control Plan; all applicable special provisions, specifications, and standard drawings; and this provision;
- (b) Successfully complete the MoDOT Stormwater Training Course within the last 4 years. The MoDOT Stormwater Training is a free online course available at MoDOT.org;
- (c) Attend the Pre-Activity Meeting for Grading and Land Disturbance and all subsequent Weekly Meetings in which grading activities are discussed;
- (d) Oversee and ensure all work is performed in accordance with the Project-specific SWPPP and all updates thereto, or as designated by the Engineer;
- (e) Review the project site for compliance with the Project SWPPP, as needed, from the start of any grading operations until final stabilization is achieved, and take necessary actions to correct any known deficiencies to prevent pollution of the waters of the state or adjacent property owners prior to the engineer’s weekly inspections;
- (f) Review and acknowledge receipt of each MoDOT Inspection Report (Land Disturbance Inspection Record) for the Project within forty eight (48) hours of receiving the report and ensure that all Stormwater Deficiencies noted on the report are corrected as soon as possible, but no later than stated in Section 5.0.

3.0 Pre-Activity Meeting for Grading/Land Disturbance and Required Hold Point. A Pre-Activity meeting for grading/land disturbance shall be held prior to the start of any land disturbance operations. No land disturbance operations shall commence prior to the Pre-Activity meeting except work necessary to install perimeter controls and entrances. Discussion items at the pre-activity meeting shall include a review of the Project SWPPP, the planned order of grading operations, proposed areas of initial disturbance, identification of all necessary BMPs that shall be installed prior to commencement of grading operations, and any issues relating to compliance with the Stormwater requirements that could arise in the course of construction activity at the project.

3.1 Hold Point. Following the pre-activity meeting for grading/land disturbance and subsequent installation of the initial BMPs identified at the pre-activity meeting, a Hold Point shall occur prior to the start of any land disturbance operations to allow the engineer and WPCM the time needed to perform an on-site review of the installation of the BMPs to ensure compliance with the SWPPP is met. Land disturbance operations shall not begin until authorization is given by the engineer.

4.0 Inspection Reports. Weekly and post run-off inspections will be performed by the engineer and each Inspection Report (Land Disturbance Inspection Record) will be entered into a web-based Stormwater Compliance database. The WPCM will be granted access to this database and shall promptly review all reports, including any noted deficiencies, and shall acknowledge receipt of the report as required in Section 2.1 (f.).

5.0 Stormwater Deficiency Corrections. All stormwater deficiencies identified in the Inspection Report shall be corrected by the contractor within 7 days of the inspection date or any extended period granted by the engineer when weather or field conditions prohibit the corrective work. If the contractor does not initiate corrective measures within 5 calendar days of the inspection date or any extended period granted by the engineer, all work shall cease on the project except for work to correct these deficiencies, unless otherwise allowed by the engineer. All impact costs related to this halting of work, including, but not limited to stand-by time for equipment, shall be borne by the Contractor. Work shall not resume until the engineer approves the corrective work.

5.1 Liquidated Damages. If the Contractor fails to complete the correction of all Stormwater Deficiencies listed on the MoDOT Inspection Report within the specified time limit, the Commission will be damaged in various ways, including but not limited to, potential liability, required mitigation, environmental clean-up, fines and penalties. These damages are not reasonably capable of being computed or quantified. Therefore, the contractor will be charged with liquidated damages specified in the amount of \$2,000 per day for failure to correct one or more of the Stormwater Deficiencies listed on the Inspection Report within the specified time limit. In addition to the stipulated damages, the stoppage of work shall remain in effect until all corrections are complete.

6.0 Basis of Payment. No direct payment will be made for compliance with this provision.

COVID-19 Safety

1.0 Description. The coronavirus disease 2019 or COVID-19 has reached a pandemic stage across the United States, including the State of Missouri. To reduce the impact of COVID-19 outbreak conditions on businesses, workers, customers and the public, the contractor shall be aware of all COVID-19 guidance from the Center for Disease Control (CDC) and other government health mandates. The contractor shall conduct all operations in conformance with

these safety directives. The guidance may change during the project construction and the contractor shall change and adapt their operation and safety protocols accordingly.

2.0 Safety Plan. The contractor shall include these procedures in the project safety plan as called for in the contract documents and revise the safety plan as needed.

3.0 Essential Work. In accordance with any state or local Stay at Home Order, care for the infrastructure has been deemed essential and MoDOT is moving forward with construction projects, this project is considered essential and the contractor and their employees, subcontractors and suppliers are considered essential business and performing essential functions.

4.0 Basis of Payment. Compliance with regulations and laws pertaining to COVID-19 is covered under Sec 107 of the Missouri Standard Specifications for Highway Construction. No direct payment will be made for compliance with this provision.

Anti-Discrimination Against Israel Certification

By signing this contract the Company certifies it is not currently engaged in and shall not, for the duration of the contract, engage in a boycott of goods or services from the State of Israel, companies doing business in or with Israel or authorized by, licensed by, or organized under the laws of the State of Israel, or persons or entities doing business in the State of Israel as defined by Section 34.600 RSMo. This certification shall not apply to contracts with a total potential value of less than One Hundred Thousand Dollars (\$100,000) or to contractors with fewer than ten (10) employees.

G. UTILITIES DSP-93-26F

1.0 For informational purposes only, the following is a list of names, addresses, and telephone numbers of the known utility companies in the area of the construction work for this improvement:

<u>Utility Name</u>	<u>Known Required Adjustment</u>
POWER DISTRIBUTION SEMO Electric Coop 1505 South Main Sikeston, MO 6801 Contact: Brad Milam Tel: 573-471-5821	Yes
POWER DISTRIBUTION AmerenUE 212 South Hickory Dexter, MO 63841 Contact: Eric Boyer Tel: 573-421-0011	Yes
COMMUNICATION AT&T	Yes

800 Broadway
Cape Girardeau, MO 63701
Contact: Tom Kilburn
Tel: 573-339-9476

COMMUNICATION	Yes
Charter Communications	
3140 West Nash Road	
Scott City, MO 63780	
Contact: Sonny Ford	
Tel: 573-335-7644	

WATER	No
PWSD #4 of New Madrid County	
Contact: Manuel Spraggs	
Tel: 573-703-2466	

WATER AND SEWER	No
City of Mathews	
PO Box 54	
Mathews, MO 63867	
Contact: Manuel Spraggs	
Tel: 573-703-2466	

1.1 The existence and approximate location of utility facilities known to exist, as shown on the plans, are based upon the best information available to the Commission at this time. This information is provided by the Commission "as-is" and the Commission expressly disclaims any representation or warranty as to the completeness, accuracy, or suitability of the information for any use. Reliance upon this information is done at the risk and peril of the user, and the Commission shall not be liable for any damages that may arise from any error in the information. It is, therefore, the responsibility of the contractor to verify the above listing information indicating existence, location and status of any facility. Such verification includes direct contact with the listed utilities.

2.0 SEMO Electric Cooperative will be relocating their pole and lines to removed the crossover at the West end of the bridge.

3.0 Ameren Electric Will be setting a temporary pole on the east end of the bridge to move the lower voltage line out of the way of the contractor. The high voltage lines will be de-energized and the power rerouted temporarily during construction. Ameren will leave the de-energized line in place for emergency reasons and will take down the line at the contractors requested for a short period of time so the contractor can drive bridge pilings. The contractor shall contact the utility a minimum of 2 weeks prior to make arrangement.

3.0 AT&T has underground communication lines located in the utility corridor and will not need relocation to perform the work.

4.0 Charter has aerial lines that will adjusted as need to accommodate the relocation of power poles.

H. Restrictions for Migratory Birds NJSP-16-06A

1.0 Description. Swallows or other bird species protected by the Migratory Bird Treaty Act may be nesting under the bridge or bridges that will be repaired under this contract.

2.0 Restrictions. To comply with the Migratory Bird Treaty Act, nests of protected species cannot be disturbed when active (eggs or young are present). Generally, nests are active between April 1 and July 31, but active nests can be present outside of these dates.

3.0 Avoidance Measures. The contractor shall not disturb active nests or destroy adults, eggs or young birds. In an effort to comply with the Migratory Bird Treaty Act, the contractor operations will be limited to the options established in the following sections.

3.1 Inactive or Partially Constructed Nests. If nests are present and MoDOT determines that the nests are inactive or partially constructed, the contractor may remove the nests provided that the colony's inactive or partially constructed nests are completely removed by March 15 and the contractor maintains a nest free condition until the bridge work is complete. Dry removal methods shall be used when practicable. If dry removal is not practicable, hydro cleaning may be used if approved by the Engineer and only if water is free of blasting grit, chemicals, or detergents, and applied using pressure less than 5,000 PSI. Clean water such as that from municipal water treatment plants or wells shall be used. Use of source water from Waters of the State (i.e., streams or lakes), is allowable, if the appropriate methods to prevent the possible spread of invasive aquatic species are implemented.

3.2 Water and Equipment Used for Hydro cleaning. Aquatic invasives such as zebra mussels and some algae species have infested several bodies of water in the United States and can be transported by vessels (barges, boats, tugs, tankers, etc.) and equipment (tanks, tubing, pumps, etc.) that have been used in areas that contain these invasive species. If equipment is not properly inspected and treated to prevent the spread of invasives, these species can be introduced into areas not currently known to have a population. These invasive species are detrimental to existing ecosystems and can outcompete native species. To assist in preventing the introduction and spread of aquatic invasive species through MoDOT projects in Missouri streams and lakes, the following precautions shall be followed.

3.2.1 Use of Water from Streams, Lakes or Ponds. Contractors shall not use water for nest removal from streams, lakes or ponds, unless they have implemented appropriate methods to prevent the possible spread of invasive aquatic species. Water sources from municipal water treatment plants or wells may be used without following these measures provided the equipment to be used has not previously contained waters from streams, lakes or ponds. If the equipment has previously contained waters from other streams or lakes, the following measures must be implemented prior to use.

3.2.1.1 Equipment Washing. Prior to the use or re-use of equipment following any use with water from streams, lakes or ponds, all equipment shall be washed and rinsed thoroughly with hard spray (power wash) and hot (minimum 120° F) water, for at least one minute.

3.2.1.2 Equipment Treating or Drying. Equipment shall be treated or dried in one of the following manners.

3.2.1.2.1 Equipment interior and/or other surfaces shall be treated with a 10% bleach solution to kill any aquatic nuisance species. This solution must also be run through all intake lines and

hoses, to sterilize interior components. When chlorine treatment is used, all chlorine runoff from equipment washing must be collected and properly treated and/or disposed of in accordance with Sec 806.

3.2.1.2.2 Equipment interior and/or other surfaces shall be treated with 140° F water for a minimum of 10 seconds contact on all surfaces. 140 ° F water must also be run through all intake lines and hoses, to purge any standing water.

3.2.1.2.3 Equipment shall be flushed of all non-municipal water, and dried thoroughly, in the sun before using in or transporting between streams and lakes. Dry times will depend on the season the equipment is being used. Equipment must dry a minimum of 7 days for June-September, 18 days for March-May; 18 days for October-November, and 30 days for December-February. The drying method should be reserved as a last resort option.

3.2.2 Prior to use of equipment, contractors shall provide the MoDOT inspector written documentation of the equipment's geographic origin (including the water body it was last used in), as well as defining the specified treatment method used to adequately ensure protection against invasive species. The written documentation will include a statement indicating the contractor is aware of these provisions and will also treat the equipment appropriately after completion of the project.

3.3 Active Nests. The contractor may work on the bridge if active nests are present, as long as the work does not impact or disturb the birds and/or nests. At a minimum, work shall not be performed within 10 feet of an active nest; however, the contractor is responsible for ensuring their activities do not impact the nests, eggs, or young.

4.0 Additional Responsibilities. If active bird nests remain after all reasonable avoidance measures have been taken, or if bird nests are observed during project construction, the contractor shall notify the Resident Engineer and contact the MoDOT Environmental Section (573-526-4778) to determine if there are other allowable options.

I. Liquidated Damages for Winter Months JSP-04-17A

Delete Sec 108.8.1.3 (a)

Liquidated damages for failure to complete the work on time shall not be waived from December 15 to March 15, both dates inclusive.

J. Fertilizer, Seeding, and Mulching

1.0 Disturbed areas shall be seeded in accordance with Sec. 805. The following seed mixtures shall be applied at the rate specified in accordance with Sec. 805:

Cool Season Mixture: (All Areas)

Seeding Mixture	Pure Live Seed
Tall fescue	160 lbs. /acre
Annual ryegrass	10 lbs. /acre
Perennial ryegrass	10 lbs. /acre
Oats	5 lbs. /acre
TOTAL	185 lbs. /acre

2.0 Mulch: Vegetative Mulch stabilized with overspray, unless otherwise approved by the engineer.

3.0 The following fertilizer mixture shall be applied at the rate specified in accordance with Sec. 801:

Nitrogen (N)	80 lbs. /acre
Phosphoric Acid (P_2O_5)	320 lbs. /acre
Potash (K_2O)	80 lbs. /acre

4.0 Soil Neutralization. In accordance with Sec. 801, an effective neutralizing material shall be applied at 2,300 lbs. per acre.

5.0 In accordance with Section 801.6 and 802.5, no direct payment will be made for liming, fertilizing, and mulching of seeded areas.

6.0 Basis of Payment. All labor, equipment and materials necessary for compliance with this provision shall be completely covered under the unit bid price for item 805-1000A, Seeding - Cool Season Mixtures, per acre, and item 806-1017, Temporary Seeding and Mulch, per acre.

K. Contractor Quality Control NJSP-15-42

1.0 The contractor shall perform Quality Control (QC) testing in accordance with the specifications and as specified herein. The contractor shall submit a Quality Control Plan (QC Plan) to the engineer for approval that includes all items listed in Section 2.0, prior to beginning work.

2.0 Quality Control Plan.

- (a) The name and contact information of the person in responsible charge of the QC testing.
- (b) A list of the QC technicians who will perform testing on the project, including the fields in which they are certified to perform testing.
- (c) A proposed independent third party testing firm for dispute resolution, including all contact information.
- (d) A list of Hold Points, when specified by the engineer.

- (e) The MoDOT Standard Inspection and Testing Plan (ITP). This shall be the version that is posted at the time of bid on the MoDOT website (www.modot.org/quality).

3.0 Quality Control Testing and Reporting. Testing shall be performed per the test method and frequency specified in the ITP. All personnel who perform sampling or testing shall be certified in the MoDOT Technician Certification Program for each test that they perform.

3.1 Reporting of Test Results. All QC test reports shall be submitted as soon as practical, but no later than the day following the test. Test data shall be immediately provided to the engineer upon request at any time, including prior to the submission of the test report. No payment will be made for the work performed until acceptable QC test results have been received by the engineer and confirmed by QA test results.

3.1.1 Test results shall be reported on electronic forms provided by MoDOT. Forms and Contractor Reporting Excel2Oracle Reports (CRE2O) can be found on the MoDOT website. All required forms, reports and material certifications shall be uploaded to a Microsoft SharePoint® site provided by MoDOT, and organized in the file structure established by MoDOT.

3.2 Non-Conformance Reporting. A Non-Conformance Report (NCR) shall be submitted by the contractor when the contractor proposes to incorporate material into the work that does not meet the testing requirements or for any work that does not comply with the contract terms or specifications.

3.2.1 Non-Conformance Reporting shall be submitted electronically on the Non-Conformance Report form provided on the MoDOT Website. The NCR shall be uploaded to the MoDOT SharePoint® site and an email notification sent to the engineer.

3.2.2 The contractor shall propose a resolution to the non-conforming material or work. Acceptance of a resolution by the engineer is required before closure of the non-conformance report.

4.0 Work Planning and Scheduling.

4.1 Two-week Schedule. Each week, the contractor shall submit to the engineer a schedule that outlines the planned project activities for the following two-week period. The two-week schedule shall detail all work and traffic control events planned for that period and any Hold Points specified by the engineer.

4.2 Weekly Meeting. When work is active, the contractor shall hold a weekly project meeting with the engineer to review the planned activities for the following week and to resolve any outstanding issues. Attendees shall include the engineer, the contractor superintendent or project manager and any foreman leading major activities. This meeting may be waived when, in the opinion of the engineer, a meeting is not necessary. Attendees may join the meeting in person, by phone or video conference.

4.3 Pre-Activity Meeting. A pre-activity meeting is required in advance of the start of each new activity, except when waived by the engineer. The purpose of this meeting is to review construction details of the new activity. At a minimum, the discussion topics shall include: safety precautions, QC testing, traffic impacts, and any required Hold Points. Attendees shall include the engineer, the contractor superintendent and the foreman who will be leading the new activity. Pre-activity meetings may be held in conjunction with the weekly project meeting.

4.4 Hold Points. Hold Points are events that require approval by the engineer prior to continuation of work. Hold Points occur at definable stages of work when, in the opinion of the engineer, a review of the preceding work is necessary before continuation to the next stage.

4.4.1 A list of typical Hold Point events is available on the MoDOT website. Use of the Hold Point process will only be required for the project-specific list of Hold Points, if any, that the engineer submits to the contractor in advance of the work. The engineer may make changes to the Hold Point list at any time.

4.4.2 Prior to all Hold Point inspections, the contractor shall verify the work has been completed in accordance with the contract and specifications. If the engineer identifies any corrective actions needed during a Hold Point inspection, the corrections shall be completed prior to continuing work. The engineer may require a new Hold Point to be scheduled if the corrections require a follow-up inspection. Re-scheduling of Hold Points require a minimum 24-hour advance notification from the contractor unless otherwise allowed by the engineer.

5.0 Quality Assurance Testing and Inspection. MoDOT will perform quality assurance testing and inspection of the work, except as specified herein. The contractor shall utilize the inspection checklists provided in the ITP as a guide to minimize findings by MoDOT inspection staff. Submittal of completed checklists is not required, except as specified in 5.1.

5.1 Inspection and testing required in the production of concrete for the project shall be the responsibility of the contractor. Submittal of the 501 Concrete Plant Checklist is required.

6.0 Basis of Payment. No direct payment will be made for compliance with this provision.

L. Modified Linear Grading Class 2

1.0 Description. Modified Linear Grading, Class 2, shall consist of contractor-furnished fill, embankment construction, excavating and grading existing shoulders to facilitate placement of pavement and base, grading of ditches and slopes, and final shaping necessary to conform to the lines and grades in the plans, and shall conform to all applicable portions of Sec 207 and specifically as follows.

2.0 Construction Requirements.

2.1 It may be necessary to go outside the limits of the right of way to obtain additional material. All contractor furnished material shall be approved by the Engineer prior to being incorporated into the project.

2.2 The Engineer shall have sole discretion in determining whether excess material may be incorporated within right-of-way or must be disposed of outside of right-of-way.

2.3 All areas to be graded shall be cleared and grubbed in accordance with Sec 201 or as directed by the Engineer. No measurement or payment will be made for clearing and grubbing.

2.4 Roadside ditches shall be graded to match the existing flowline unless shown otherwise in the plans. Grading for pipe extensions shall match the projected flowline of the existing pipe.

2.5 Any damage to existing drainage structures or existing pavement, resulting from the Contractor's operations, shall be repaired at the Contractor's expense and to the satisfaction of the Engineer.

3.0 Method of Measurement. Measurement will be made to the nearest 1/10 station for the length of grading measured along the centerline of the traveled way.

4.0 Basis of Payment. All costs incurred by the Contractor to comply with this provision shall be considered completely covered by the contract unit price for Item 207-99.09, Modified Linear Grading, Class 2. No direct payment will be made for contractor furnished material or disposal of excess material.

M. Damage to Existing Roadways and Entrances

1.0 Description. This work shall consist of repairing any damage to existing pavement, shoulders, side roads, and entrances caused by Contractor operations. This shall include, but is not limited to, damage caused by the traffic during Contractor operations within the project limits including the work zone signing.

2.0 Construction Requirements. Any cracking, gouging, or other damage to the existing pavement, shoulders, side roads, or entrances from general construction shall be repaired within twenty-four (24) hours of the time of damage at the Contractor's expense. Repair of the damaged pavement, shoulders, side roads, or entrances shall be as determined by the Engineer.

3.0 Method of Measurement. No measurement of damaged pavement, shoulder, side roads, or entrances, as described above, shall be made.

4.0 Basis of Payment. No payment will be made for repairs to existing pavement, shoulders, side roads or entrances damaged by Contractor operations.

N. Temporary Stream Crossings and Workpads

1.0 Description. This work shall include construction of a temporary stream crossing or workpad to facilitate the placement of the Contractor's equipment in the stream, in accordance with Division 100 of the General Provisions, Section 806.1 of the Standard Specifications, and as follows.

2.0 Construction Requirements. The Contractor shall be solely responsible for the design, installation, maintenance, and removal of the temporary stream crossing or workpad, as well as any structures installed to maintain proper flow while the temporary crossing or workpad is in place.

2.1 Temporary crossings and workpads shall be constructed of clean rock fill in accordance with Sec 303.2, except Sec 303.2.3 shall not apply.

2.2 The Contractor shall design the temporary crossing or workpad, including the size and number of pipes, to maintain normal flows, prevent upstream flooding, and allow free movement of aquatic life in the stream.

2.3 Storm water from the approaches to temporary crossings or workpads must be diverted to appropriate erosion control devices to allow sediment-laden runoff to be treated prior to entering the stream.

2.4 Pipes shall be anchored to prevent being swept from the project during high flows.

2.5 Temporary stream crossings and workpads shall not conflict with existing utilities. Any utilities that conflict with the construction of a temporary crossing/workpad or operation of equipment on a temporary crossing/workpad shall be relocated at the Contractor's expense.

3.0 Basis of Payment. No direct payment will be made for any equipment, labor, material, or time involved with the design, installation, maintenance, or removal of temporary stream crossings and workpads. The contractor shall be responsible for all costs, including damage and penalties.

O. Flap Gate

1.0 Description. This work shall consist of furnishing and installing flap gates of standard design and fit the opening shown on the plans.

2.0 Materials. Flap gates shall be constructed as follows.

BILL OF MATERIAL		
PC. #	DESCRIPTION	# REQUIRED
1	CONNECTING BAND - VAR LENGTH (A)	1
2	1/4" x 2" BAR x 2 1/2" LONG	2
3	1/4" PLATE COVER VAR DIA. (B) - UP TO 24" DIA. PIPE 3/8" PLATE COVER VAR DIA. (B) - ALL PIPES GREATER THAN 24" DIA.	1
4	1/4" x 2" BAR x VAR LENGTH (C)	2
5	1/4" x 2" BAR x 2" LONG W/BRASS BUSHINGS	2
6	7/16" Ø ROD x 8 1/2" LONG	1
7	FLAT BAND LUGS	2
8	1/2" Ø x 6" BAND BOLT & NUT	1
	ATTACHMENT BOLTS (3/8" Ø x 1 1/2" HEX. HEAD)	4

2.1 As a standard finish all gates shall be painted with a shop coat of red oxide.

3.0 Construction Requirements. Flap gates shall react to any difference in water level, and shall be hinged to seat accurately. Flap gates shall be constructed according to Figure 1 – Dimension Details, Figure 2 – Connecting Band and Figure 3 – Cover Plate.

4.0 Method of Measurement. For the basis of this contract, all materials used in constructing the flag gate shall be considered as a single unit. Measurement will be made per each unit installed by the contractor and accepted by the engineer.

5.0 Basis of Payment. The accepted quantity for flap gates, complete in place including connection to the pipe, will be paid for at the contract unit price of each. No additional payment will be made for any labor, equipment or time necessary to fulfill the requirements of this special

provision.

DIMENSION DETAILS			
PIPE DIA.	(A) CONNECTING BAND LENGTH	(B) PLATE COVER DIA.	(C) BAR LENGTH
15"	54"	18.5"	16"
18"	64"	21.5"	19"
21"	74"	24.5"	22"
24"	83"	27.5"	25"
30"	102"	33.5"	31"
36"	120"	39.5"	36"
42"	140"	45.5"	42"
48"	159"	51.5"	49"

Figure 1 – Dimension Details

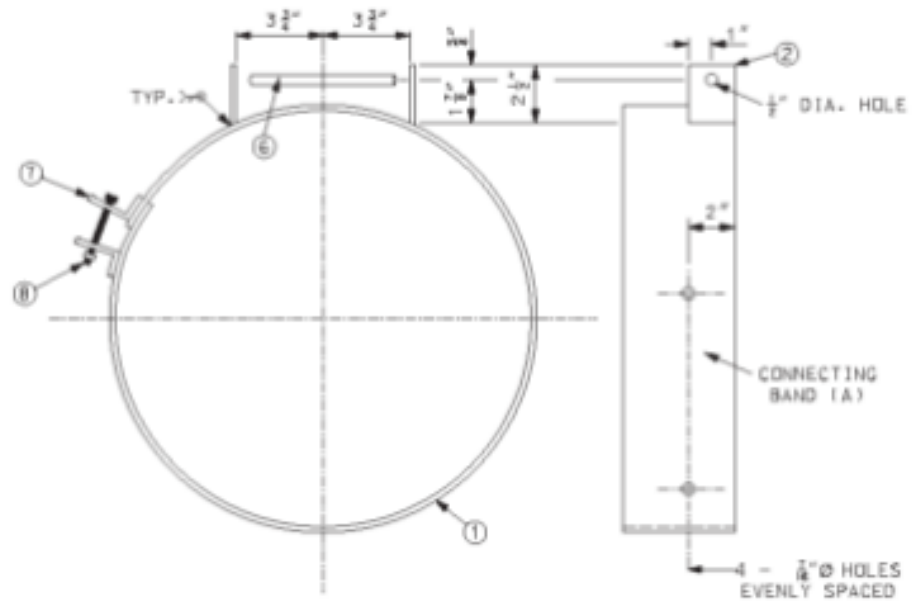


Figure 2 - Connecting Band

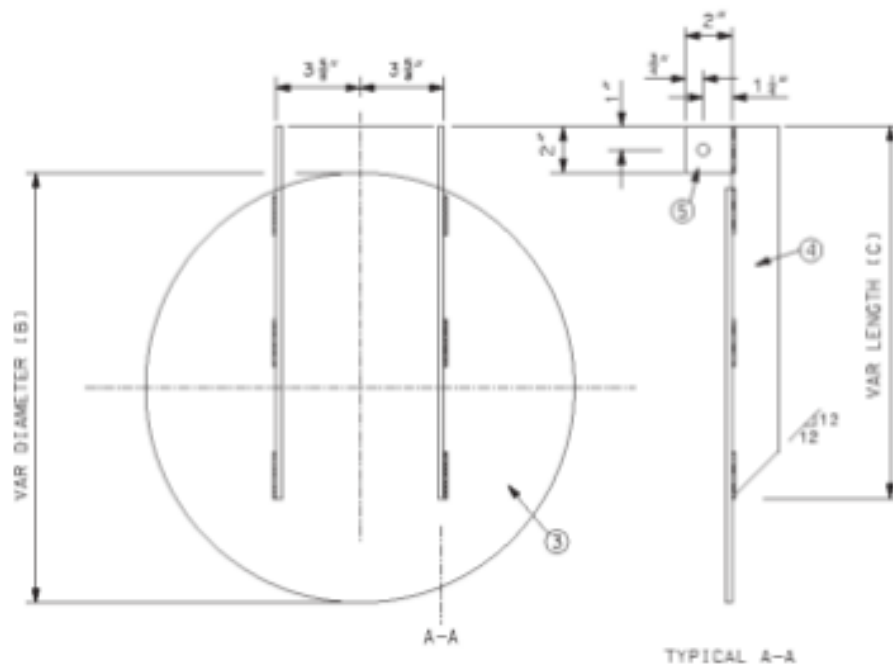


Figure 3 - Cover Plate

P. Pipe Culverts

Delete Sec 724.1.1 and Sec 724.1.2 and substitute the following:

724.1.1 The contract will specify either the type of pipe or the group of permissible types of pipe. If a group of permissible types is specified, the contractor may use any of the types listed within the specified group and size range as follows.

	Group A ^b	Group B ^b	Group C
Flexible Pipe -- Metal^a	Size	Size	Size
Aluminum Coated Steel Pipe	ALL	ALL	ALL
Polymer Coated Steel Pipe	ALL	ALL	ALL
Aluminum Alloy Pipe	ALL	ALL	ALL
Bituminous Coated Steel Pipe	NA	NA	ALL

^aMetal Pipe used for storm sewer applications shall be Type IA or Type IR.

^bPipe used for storm sewers under the influent of a pavement section or future anticipated influence of a pavement section which has a 3,500 ADT or greater shall be Group A pipe. Pipe used in other storm sewer applications shall be group B. No other substitutions will be allowed.

724.1.2 The culvert shall be constructed in accordance with Sec 725.

Q. Protective Measures for Ditch Work In Illinois Chorus Frog Breeding Areas

1.0 Description. There are areas of herpetofaunal significance along and adjacent to the project corridor. Roadside ditches, wet fields, and streams have been shown to support populations of Illinois chorus frog, a species of conservation concern and candidate for federal listing. General breeding dates for Illinois chorus frog are February to early April; tadpoles develop into sub-adult frogs by May or June. To ensure protection of this species and other sensitive aquatic species that may be present, the following seasonal restrictions must be adhered to.

2.0 Restrictions. Personnel shall take all precautions to prevent negative impacts to aquatic and semi-aquatic species along the project corridor, including Illinois chorus frog. If a ditch adjacent to the roadway has standing water, then any work in the ditch (including land disturbance, grading, equipment/vehicle staging and storage, or refueling) shall take place between mid-summer (July 15) and winter (January 15), in order to minimize potential impacts to Illinois chorus frog.

3.0 Basis of Payment. No direct payment will be made to the Contractor to recover the cost of labor, materials, or equipment required to comply with the above requirements.