



LOG MILE 212.486 TO LOG MILE 216.075

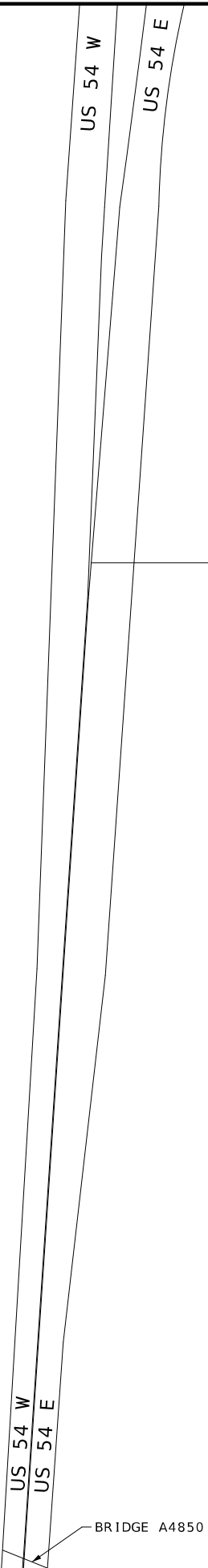
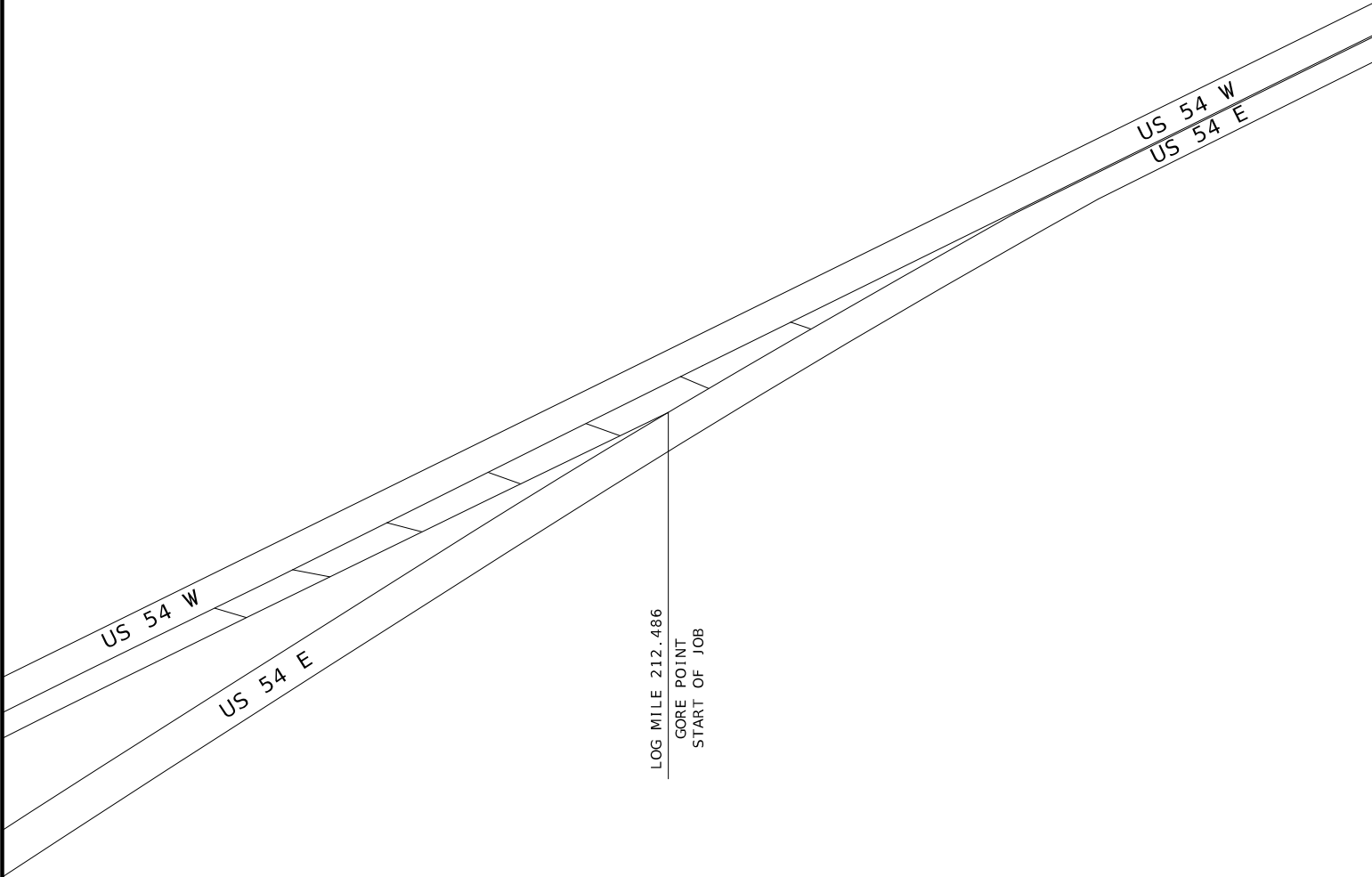
[illegible]

TYPICAL SECTION SHEET
SHEET 1 OF 1
NOT TO SCALE

EFFECTIVE: 04-01-2023																																					
SIGN	SIZE	AREA	QTY	TOTAL	QTY	TOTAL	SIGN									SIGN	SIZE	AREA	QTY	TOTAL	QTY	TOTAL	SIGN									ITEM	TOTAL				
SIGN	IN.	SQ.FT.	EACH	SQ.FT.	EACH	SQ.FT.	NUM.									SIGN	IN.	SQ.FT.	EACH	SQ.FT.	EACH	SQ.FT.	NUM.									NUMBER	QTY				
WARNING SIGNS								DESCRIPTION								GUIDE SIGNS								DESCRIPTION													
WO1-1L	48X48	16.00						TURN (SYMBOL LEFT ARROW)								E05-1	36X48	12.00								GORE EXIT					6122008		IMPACT ATTENUATOR 40 MPH (SAND BARRELS)				
WO1-1R	48X48	16.00						TURN (SYMBOL RIGHT ARROW)								E05-2	48X36	12.00								EXIT OPEN					6122009		IMPACT ATTENUATOR 45 MPH (SAND BARRELS)				
WO1-2L	48X48	16.00						CURVE (SYMBOL LEFT ARROW)								E05-2a	48X36	12.00								EXIT CLOSED					6122010		IMPACT ATTENUATOR 50 MPH (SAND BARRELS)				
WO1-2R	48X48	16.00						CURVE (SYMBOL RIGHT ARROW)								GO20-1	60X24	10.00	2	20					1	ROAD WORK NEXT 4 MILES					6122012		IMPACT ATTENUATOR 55 MPH (SAND BARRELS)				
WO1-3L	48X48	16.00						REVERSE TURN (SYMBOL LEFT ARROW)								GO20-2	48X24	8.00	2	16					26	END ROAD WORK					6122014		IMPACT ATTENUATOR 60 MPH (SAND BARRELS)				
WO1-3R	48X48	16.00						REVERSE TURN (SYMBOL RIGHT ARROW)								GO20-4	36X18	4.50	3	13.5					53	PILOT CAR FOLLOW ME					6122017		IMPACT ATTENUATOR 65 MPH (SAND BARRELS)				
WO1-4L	48X48	16.00						REVERSE CURVE (SYMBOL LEFT ARROW)								GO20-4a	42X30	8.75								PILOT CAR IN USE WAIT & FOLLOW					6122019		IMPACT ATTENUATOR 70 MPH (SAND BARRELS)				
WO1-4R	48X48	16.00						REVERSE CURVE (SYMBOL RIGHT ARROW)								GO20-4a	18X12	1.50	1	1.50					60	PILOT CAR IN USE WAIT & FOLLOW					6122020		REPLACEMENT SAND BARREL				
WO1-4bL	48X48	16.00						DOUBLE ARROW REVERSE CURVE (SYMBOL LT ARROWS)								GO20-5aP	36X24	6.00								WORK ZONE (PLAQUE)					6122030		IMPACT ATTENUATOR (RELOCATION)				
WO1-4bR	48X48	16.00						DOUBLE ARROW REVERSE CURVE (SYMBOL RT ARROWS)								MO4-8a	24X18	3.00								END DETOUR					6123000A		TRUCK OR TRAILER MOUNTED ATTENUATOR (TMA)				
WO1-4cL	48X48	16.00						TRIPLE ARROW REVERSE CURVE (SYMBOL LT ARROWS)								MO4-9L	48X36	12.00								DETOUR (LEFT ARROW)					6161008		ADVANCED WARNING RAIL SYSTEM				
WO1-4cR	48X48	16.00						TRIPLE ARROW REVERSE CURVE (SYMBOL RT ARROWS)								MO4-9R	48X36	12.00								DETOUR (RIGHT ARROW)					6161012		BUOYS (BOATS KEEP OUT)				
WO1-6	60X30	12.50						HORIZONTAL ARROW (SYMBOL)								MO4-9P	48X12	4.00								STREET NAME (PLAQUE)					6161013		BUOYS (NO WAKE)				
WO1-6a	72X36	18.00						HORIZ. ARROW (SYMBOL ON PERMANENT BARRICADE)								MO4-10L	48X18	6.00								DETOUR (ARROW LEFT)					6161014		SPECIAL SIGN ASSEMBLY (BOATS KEEP OUT)				
WO1-7	60X30	12.50						DOUBLE HEAD HORIZONTAL ARROW (SYMBOL)								MO4-10R	48X18	6.00								DETOUR (ARROW RIGHT)					6161025	108	CHANNELIZER (TRIM LINE)				
WO1-7a	72X36	18.00						DOUBLE HEAD HORIZ. ARROW (SYMBOL ON PERM. BARR.)								REGULATORY SIGNS																6161030		TYPE III MOVEABLE BARRICADE			
WO1-8	18X24	3.00						CHEVRON (SYMBOL)								R1-1	48X48	13.25								STOP					6161033		DIRECTION INDICATOR BARRICADE				
WO1-8a	30X36	7.50						CHEVRON (SYMBOL FOR DIVIDED HIGHWAYS)								R1-2	48TRI	6.93								YIELD					6161040		FLASHING ARROW PANEL				
WO3-1	48X48	16.00						STOP AHEAD (SYMBOL)								R1-2a	36X36	9.00								TO ONCOMING TRAFFIC (PLAQUE)					6161047		TYPE III OBJECT MARKER				
WO3-2	48X48	16.00						YIELD AHEAD (SYMBOL)								R1-3P	30X12	2.50								ALL WAY (PLAQUE)					6161055		SEQUENTIAL FLASHING WARNING LIGHT				
WO3-3	48X48	16.00						SIGNAL AHEAD (SYMBOL)								R2-1	36X48	12.00								SPEED LIMIT XX					6161070		TUBULAR MARKER				
WO3-4	48X48	16.00						BE PREPARED TO STOP								R3-1	48X48	16.00								NO RIGHT TURN (SYMBOL)					6161095		RADAR SPEED ADVISORY SYSTEM				
WO3-5	48X48	16.00						SPEED LIMIT AHEAD								R3-2	48X48	16.00								NO LEFT TURN (SYMBOL)						CHANGEABLE MESSAGE SIGN, COMMISSION FURNISHED/RETAINED					
WO4-1L	48X48	16.00						MERGE (SYMBOL FROM LEFT)								R3-3	36X36	9.00								NO TURNS					6161096		CHANGEABLE MESSAGE SIGN W/O COMM. INTERFACE - CONTRACTOR FURNISHED/RETAINED				
WO4-1R	48X48	16.00						MERGE (SYMBOL FROM RIGHT)								R3-4	48X48	16.00								NO U-TURN (SYMBOL)						CHANGEABLE MESSAGE SIGN WITH COMM. INTERFACE - CONTRACTOR FURNISHED/RETAINED					
WO4-1aL	48X48	16.00						MERGE (ARROW SYMBOL)								R3-7L	30X30	6.25								LEFT LANE MUST TURN LEFT					6161098A		TEMPORARY TRAFFIC BARRIER CONTRACTOR FURNISHED/RETAINED				
WO4-1aR	48X48	16.00						MERGE (ARROW SYMBOL)								R3-7R	30X30	6.25								RIGHT LANE MUST TURN RIGHT						TEMPORARY TRAFFIC BARRIER CONTRACTOR FURNISHED/RETAINED					
WO5-1	48X48	16.00						ROAD/BRIDGE/RAMP NARROWS								R4-1	36X48	12.00								DO NOT PASS					6161099		WORK ZONE TRAFFIC SIGNAL SYSTEM				
WO5-3	48X48	16.00						ONE LANE BRIDGE								R4-2	36X48	12.00								PASS WITH CARE					6162000A		TEMPORARY LONG-TERM RUMBLE STRIPS				
WO5-5	48X48	16.00						NARROW LANES								R4-8a	36X48	12.00								KEEP LEFT (HORIZONTAL ARROW)					6162002		TEMPORARY TRAFFIC BARRIER CONTRACTOR FURNISHED/RETAINED				
WO6-1	48X48	16.00						DIVIDED HIGHWAY (SYMBOL)								R4-7a	36X48	12.00								KEEP RIGHT (HORIZONTAL ARROW)						TEMPORARY TRAFFIC BARRIER CONTRACTOR FURNISHED/RETAINED					
WO6-2	48X48	16.00						DIVIDED HIGHWAY END (SYMBOL)								R5-1	30X30	6.25								DO NOT ENTER					6173600D		TEMPORARY TRAFFIC BARRIER CONTRACTOR FURNISHED/RETAINED				
WO6-3	48X48	16.00						TWO WAY TRAFFIC (SYMBOL)								R5-1a	36X24	6.00								WRONG WAY						TEMPORARY TRAFFIC BARRIER CONTRACTOR FURNISHED/COMMISSION RETAINED					
WO7-3a	30X24	5.00						NEXT XX MILES (PLAQUE)								R6-1L	54X18	6.75								ONE WAY ARROW (LEFT)					6173602B		TEMP. TRAFFIC BARRIER HEIGHT TRANSITION				
WO8-1	48X48	16.00						BUMP								R6-1R	54X18	6.75								ONE WAY ARROW (RIGHT)					6174000A		RELOCATING TEMPORARY TRAFFIC BARRIER COMMISSION FURNISHED/RETAINED				
WO8-2	48X48	16.00						DIP								R6-2L	24X30	5.00								ONE WAY (LEFT)					6175010A		TEMP. TRAFFIC BARRIER HEIGHT TRANSITION COMMISSION FURNISHED/RETAINED				
WO8-3	48X48	16.00						PAVEMENT ENDS								R6-2R	24X30	5.00								ONE WAY (RIGHT)						TEMPORARY RAISED PAVEMENT MARKER					
WO8-4	48X48	16.00						SOFT SHOULDER								R9-9	24X12	2.00								SIDEWALK CLOSED					6176000B		TEMPORARY TRAFFIC SIGNALS				
WO8-5	48X48	16.00						SLIPPERY WHEN WET (SYMBOL)								R9-11L	24X18	3.00								SIDEWALK CLOSED AHEAD, (ARROW LEFT) CROSS HERE					6208064A		TEMPORARY TRAFFIC SIGNALS AND LIGHTING				
WO8-6	48X48	16.00						TRUCK CROSSING (WITH FLAGS)								R9-11R	24X18	3.00								SIDEWALK CLOSED AHEAD, (ARROW RIGHT) CROSS HERE					9029400						
WO8-6c	48X48	16.00						TRUCK ENTRANCE								R10-6	24X36	6.00								STOP HERE ON RED (45° ARROW)					9029401						
WO8-7	36X36	9.00						LOOSE GRAVEL								R11-2	48X30	10.00								ROAD CLOSED											
WO8-7a	36X36	9.00						FRESH OIL/LOOSE GRAVEL								R11-3a	60X3																				

START OF JOB

END OF JOB



BRIDGE A4850



THIS SHEET HAS BEEN
SIGNED, SEALED AND DATED
ELECTRONICALLY.

DATE PREPARED	
2 / 16 / 2024	
ROUTE	STATE
54	MO
DISTRICT	SHEET NO.
NE	4
COUNTY	
AUDRAIN	
JOB NO.	
JNE0205	
CONTRACT ID.	
PROJECT NO.	
BRIDGE NO.	

DATE	DESCRIPTION

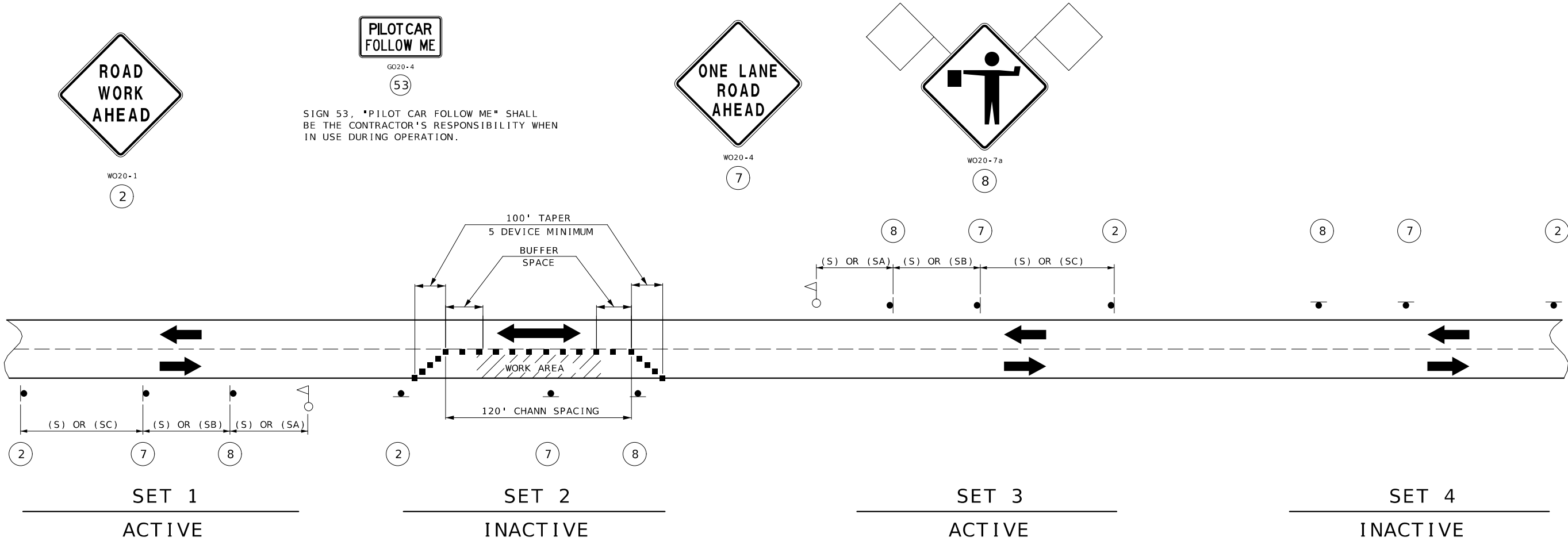
MISSOURI HIGHWAYS AND TRANSPORTATION
COMMISSION



105 WEST CAPITOL
JEFFERSON CITY, MO 65102
1-888-ASK-MODOT (1-888-275-6636)

SPECIAL SHEET
START AND END OF
JOB DETAILS
SHEET 1 OF 1
NOT TO SCALE

TEMP. TRAFFIC CONTROL
DURATION OF PROJECT
SHEET 1 OF 4
NOT TO SCALE



SIGN SETS 1 AND 3 ARE ACTIVE AND (I.E., SIGNS FACE ONCOMING TRAFFIC).

SIGN SETS 2 AND 4 ARE INACTIVE (I.E., SIGNS DO NOT FACE EITHER DIRECTION OF TRAFFIC) WHEN THE RESURFACING OPERATION IS LOCATED BETWEEN SIGN SETS 1 AND 3.

WHEN SIGN SETS 2 AND 4 ARE ACTIVE, SIGN SETS 1 AND 3 BECOME INACTIVE AND ARE ADVANCED TO BECOME SETS 2 AND 4 WITH SIGN LEGENDS TURNED AWAY FROM BOTH DIRECTIONS OF TRAFFIC. WHEN THE RESURFACING OPERATION ADVANCES TO BETWEEN SIGN SETS 2 AND 4, SIGN SETS 2 AND 4 BECOME ACTIVE (I.E., NEW SIGN SETS 1 AND 3) AND SIGN SETS 1 AND 3 ADVANCED IN THE DIRECTION OF THE OPERATION (I.E., NEW SIGN SETS 2 AND 4).

- - CHANNELIZERS
- - FLAGGER

NOTES:

DAYLIGHT FLAGGING OPERATIONS ONLY.

CHANNELIZING DEVICES LOCATED DOWNSTREAM OF THE ONE-LANE, TWO-WAY TAPER ARE OPTIONAL. THESE DEVICES SHOULD BE ELIMINATED WHEN THEIR USE WILL REDUCE THE USABLE LANE WIDTH, INCLUDING ANY ACCEPTABLE SHOULDERS, TO LESS THAN 10' OR WILL SIGNIFICANTLY AFFECT THE RESURFACING OPERATION.

SPEED	SIGN SPACING (FT.)	
	(1)	
PERMANENT POSTED (MPH)	NON-DIVIDED HIGHWAYS (S)	DIVIDED HIGHWAYS (S)
0-35	200	200
40-45	350	500
50-55	500	1000
60-70	1000	(SA) -1000 (SB) -1500 (SC) -2640

PERMANENT POSTED SPEED LIMIT (MPH)	BUFFER SPACE LENGTH (FT)
0 - 35	280
40 - 45	400
50 - 55	560
60 - 70	840

NOTES:

(1) SPACING BETWEEN SIGNS, BETWEEN LAST SIGN AND FLAGGER, BEGINNING OF TAPER OR SIGNED CONDITION.

SPACINGS MAY BE ADJUSTED AS NECESSARY TO MEET FIELD CONDITIONS.

STATE OF MISSOURI
CHRISTOPHER S. KNAPP
NUMBER
PE-2005023325
PROFESSIONAL ENGINEER

THIS SHEET HAS BEEN
SIGNED, SEALED AND DATED
ELECTRONICALLY.

DATE PREPARED
2/16/2024

ROUTE
54

DISTRICT
NE

STATE
MO

SHEET NO.
6

COUNTY
AUDRAIN

JOB NO.
JNE0205

CONTRACT ID.

PROJECT NO.

BRIDGE NO.

DESCRIPTION

DATE

MISSOURI HIGHWAYS AND TRANSPORTATION COMMISSION

105 WEST CAPITOL
JEFFERSON CITY, MO 65102
1-888-ASK-MODOT (1-888-275-6636)

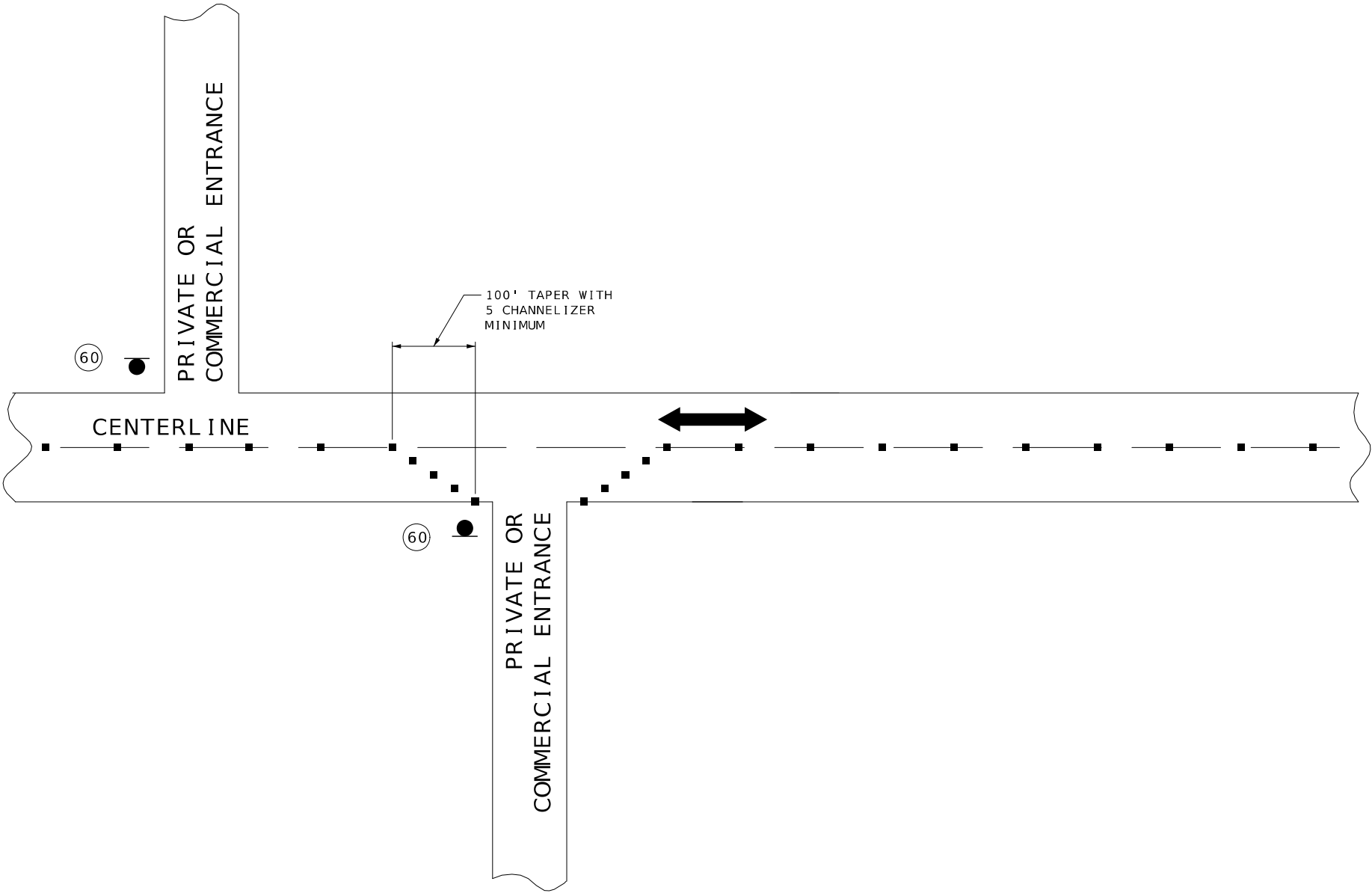
MoDOT

TEMP. TRAFFIC CONTROL

LANE CLOSURE ON
TWO-LANE HIGHWAY

SHEET 2 OF 4

NOT TO SCALE



SIDE ROADS ENTERING WORK ZONES

NOTES:

ADDITIONAL WARNING SIGNS SHALL BE ERECTED AT OTHER INTERSECTIONS WITHIN THE WORK ZONE, AS DIRECTED BY THE ENGINEER.

■ - CHANNELIZERS (AS SPECIFIED)



SPECIAL
60

SHALL ONLY BE USED AT PRIVATE AND COMMERCIAL ENTRANCES. SEE SPECIAL PROVISIONS.



THIS SHEET HAS BEEN SIGNED, SEALED AND DATED ELECTRONICALLY.

DATE PREPARED
2/16/2024

ROUTE	STATE
54	MO
DISTRICT	SHEET NO.
NE	7

COUNTY
AUDRAIN

JOB NO.
JNE0205

CONTRACT ID.

PROJECT NO.

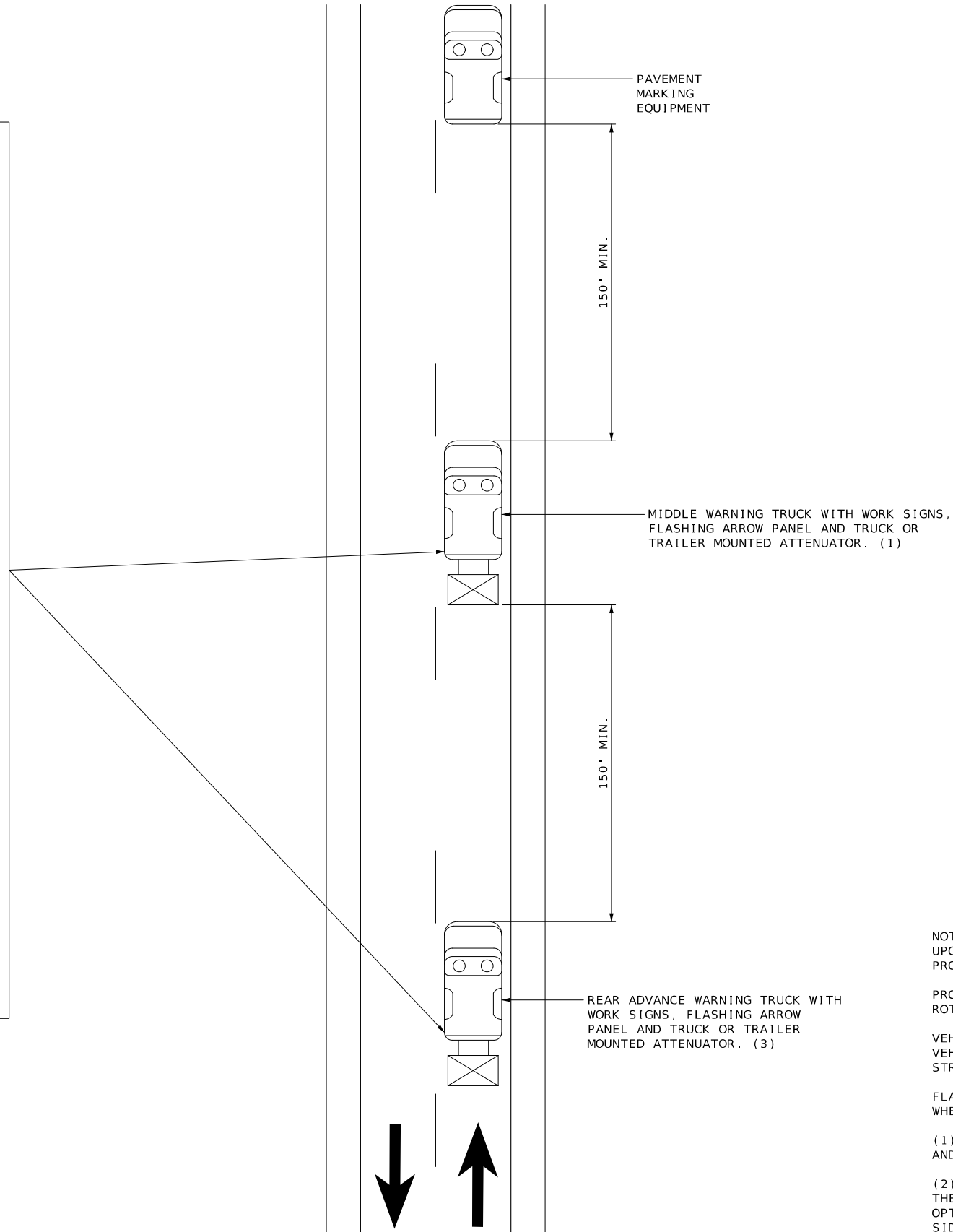
BRIDGE NO.

DATE	DESCRIPTION

MISSOURI HIGHWAYS AND TRANSPORTATION COMMISSION

105 WEST CAPITOL
JEFFERSON CITY, MO 65102
1-888-ASK-MODOT (1-888-275-6636)

TEMP. TRAFFIC CONTROL
SIDE ROAD ENTERING
WORK ZONE
SHEET 3 OF 4
NOT TO SCALE



NOTES:

UPON APPROVAL OF THE ENGINEER, THE CONTRACTOR MAY PROVIDE ADDITIONAL PROTECTIVE TRUCK EQUIPPED WITH PROPER WARNING DEVICES.

PROTECTIVE TRUCK AND WORK VEHICLES SHALL DISPLAY HIGH-INTENSITY ROTATING, FLASHING, OSCILLATING, OR STROBE LIGHTS.

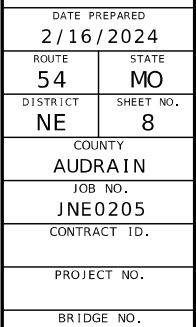
VEHICLE HAZARD WARNING SIGNALS SHALL NOT BE USED INSTEAD OF THE VEHICLE'S HIGH-INTENSITY ROTATING, FLASHING, OSCILLATING, OR STROBE LIGHTS.

FLASHING ARROW PANELS SHALL BE INCIDENTAL TO TRUCK MOUNTED ATTENUATORS, WHEREVER USED. NO ADDITIONAL PAYMENT SHALL BE MADE.

(1) TRUCK IS OPTIONAL ON TWO-LANE UNDIVIDED HIGHWAYS IF SIGNING AND ARROW BOARD IS MOUNTED ON THE PAVEMENT MARKING EQUIPMENT.

(2) WET PAINT SIGNS ARE INSTALLED TO INDICATE THE SIDE IN WHICH THE PAVEMENT MARKING MATERIAL IS BEING APPLIED. AT THE CONTRACTOR'S OPTION, A FRONT FACING WET PAINT SIGN MAY BE INSTALLED ON THE LEFT SIDE OF THE PAVEMENT MARKING EQUIPMENT.

(3) REAR ADVANCE WARNING TRUCK IS POSITIONED AT THE NO TRACK POINT OF THE PAVEMENT MARKING MATERIAL, OR VERTICAL OR HORIZONTAL CURVES THAT RESTRICT SIGHT DISTANCE, OR SPACING SHOWN.

[illegible]

MISSOURI HIGHWAYS AND TRANSPORTATION
COMMISSION

MoDOT

105 WEST CAPITOL
JEFFERSON CITY, MO 65102
1-888-ASK-MODOT (1-888-275-6636)

TEMP. TRAFFIC CONTROL
MOVING OPERATION
ON HIGHWAY
SHEET 4 OF 4
NOT TO SCALE