

**DESIGN DESIGNATION**  
 A.A.D.T. - 2024 = NODAWAY CO.  
 RTE JJ 312  
 RTE NN 277  
 RTE AB 196  
 RTE WW 308  
 RTE AH 286  
 NODAWAY/ANDREW CO.  
 RTE N 455  
 RTE Y 320  
 HOLT CO.  
 RTE C 370  
 FUNCTIONAL CLASSIFICATION- MINOR COLLECTOR

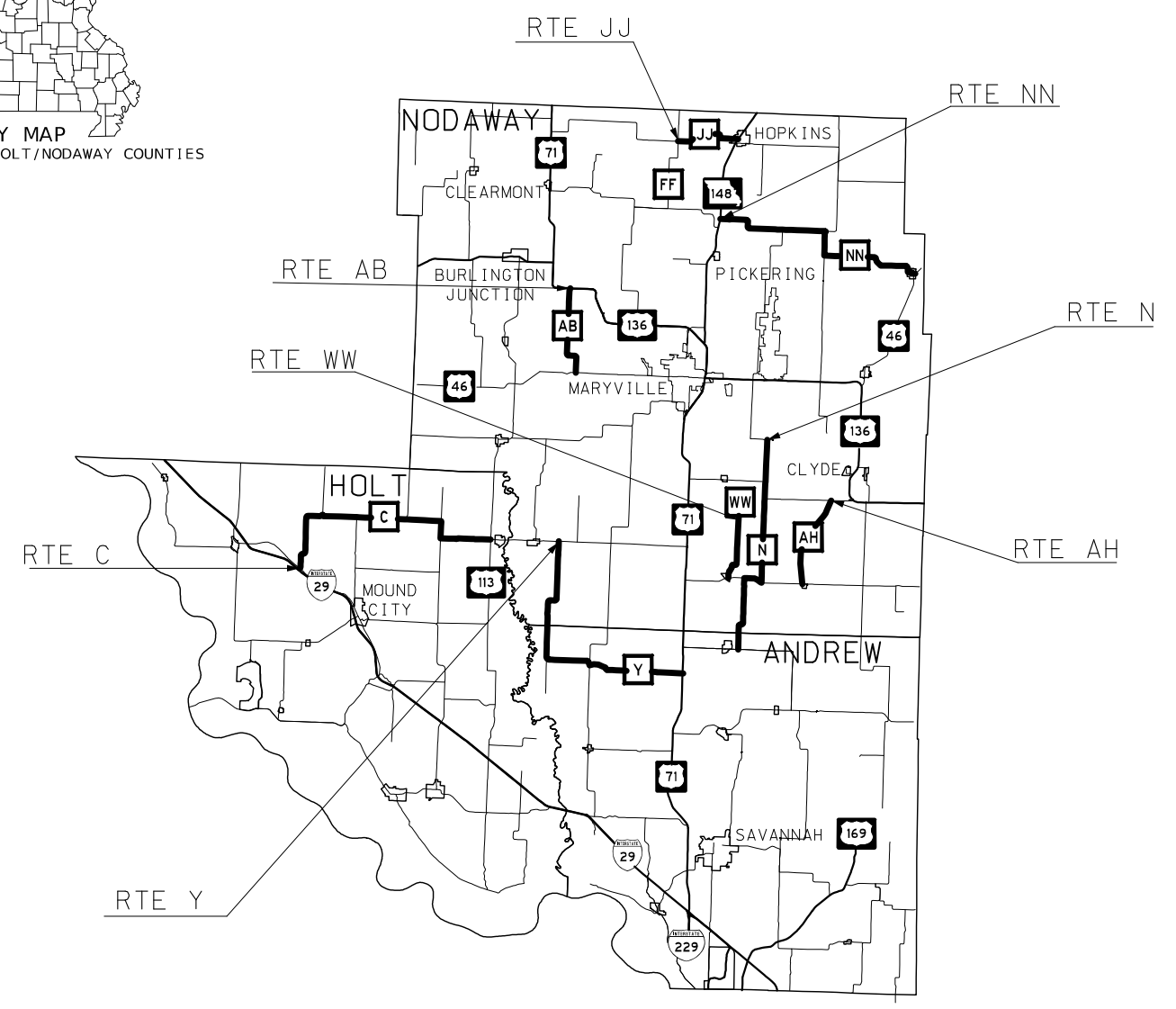
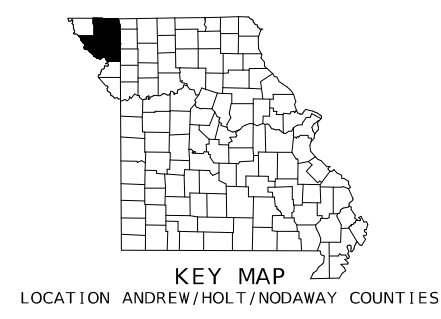
**NO RIGHT OF WAY ACQUISITION**

**CONVENTIONAL SYMBOLS**  
(USED IN PLANS)

	EXISTING	NEW
BUILDINGS AND STRUCTURES		
GUARD RAIL		
GUARD CABLE		
CONCRETE RIGHT-OF-WAY MARKER		
STEEL RIGHT-OF-WAY MARKER		
LOCATION SURVEY MARKER		
UTILITIES		
FIBER OPTICS	-FO-	-FO-
OVERHEAD CABLE TV	-OTV-	-OTV-
UNDERGROUND CABLE TV	-UTV-	-UTV-
OVERHEAD TELEPHONE	-OT-	-OT-
UNDERGROUND TELEPHONE	-UT-	-UT-
OVERHEAD POWER	-OE-	-OE-
UNDERGROUND POWER	-UE-	-UE-
SANITARY SEWER	-S-	-S-
STORM SEWER	-SS-	-SS-
GAS	-G-	-G-
WATER	-W-	-W-
MANHOLE		
FIRE HYDRANT		
WATER VALVE		
WATER METER		
DROP INLET		
DITCH BLOCK		
GROUND MOUNTED SIGN		
LIGHT POLE		
H-FRAME POWER POLE		
TELEPHONE PEDESTAL		
FENCE		
CHAIN LINK	-V-	-V-
WOVEN WIRE	-X-	-X-
GATE POST		
BENCHMARK		

NOTE: DASHED OR OPEN SYMBOLS INDICATE EXISTING FEATURES

# MISSOURI HIGHWAYS AND TRANSPORTATION COMMISSION PLANS FOR PROPOSED STATE HIGHWAY ANDREW/HOLT/NODAWAY COUNTIES



1" CLC RESURFACING

NOT TO SCALE

THE EXISTENCE AND APPROXIMATE LOCATION OF UTILITY FACILITIES KNOWN TO EXIST, AS SHOWN ON THE PLANS, ARE BASED ON THE BEST INFORMATION AVAILABLE TO THE COMMISSION AT THIS TIME. THIS INFORMATION IS PROVIDED BY THE COMMISSION "AS-IS" AND THE COMMISSION EXPRESSLY DISCLAIMS ANY REPRESENTATION OR WARRANTY AS TO THE COMPLETENESS, ACCURACY, OR SUITABILITY OF THE INFORMATION FOR ANY USE. RELIANCE UPON THIS INFORMATION IS DONE AT THE RISK AND PERIL OF THE USER, AND THE COMMISSION SHALL NOT BE LIABLE FOR ANY DAMAGES THAT MAY ARISE FROM ANY ERROR IN THE INFORMATION. IT IS, THEREFORE, THE RESPONSIBILITY OF THE CONTRACTOR TO VERIFY THE EXISTENCE, LOCATION AND STATUS OF ANY FACILITY. SUCH VERIFICATION INCLUDES DIRECT CONTACT WITH THE LISTED UTILITIES.

**INDEX OF SHEETS**

DESCRIPTION	SHEET NUMBER
TITLE SHEET	1
TYPICAL SECTIONS (TS) (1 SHEET)--	2
QUANTITIES (QU) (10 SHEETS)-----	3
SPECIAL SHEET (SS)-----	4
TRAFFIC CONTROL SHEET (TC)-----	5

**LENGTH OF PROJECT**

COUNTY	ROUTE	BEGIN LOG	END LOG	APPARENT LENGTH	
NODAWAY COUNTY	ROUTE JJ (EAST)	9.093	12.957		
	ROUTE NN (EAST)	0.000	14.165		
	ROUTE AB (SOUTH)	0.000	5.483		
	ROUTE WW (SOUTH)	0.000	4.265		
	ROUTE AH (SOUTH)	0.000	5.481		
				APPARENT LENGTH	33.258 MILES
NODAWAY/ANDREW COUNTIES	ROUTE N (SOUTH)	0.000	13.952		
	ROUTE Y (SOUTH)	0.000	15.705		
					APPARENT LENGTH
HOLT COUNTY	ROUTE C (EAST)	0.000	15.281		
					APPARENT LENGTH
<b>CORRECTIONS/EXCEPTIONS:</b>					
	RTE JJ BRIDGE L0736	0.041	MI		
	RTE JJ BRIDGE L0737	0.039	MI		
	RTE NN BRIDGE A4930	0.028	MI		
	RTE NN BRIDGE P0979	0.023	MI		
	RTE NN BRIDGE P0980	0.027	MI		
	RTE NN BRIDGE P0981	0.045	MI		
	RTE AB BRIDGE N0443	0.021	MI		
	RTE Y BRIDGE A7113	0.031	MI		
	RTE N (RTE M)	1.099	MI		
	<b>TOTAL CORRECTIONS/EXCEPTIONS</b>	<b>1.354</b>	<b>MILES</b>		
	<b>NET LENGTH OF PROJECT</b>	<b>76.842</b>	<b>MILES</b>		
	<b>STATE LENGTH</b>	<b>76.842</b>	<b>MILES</b>		
	<b>FOR INFORMATION ONLY</b>	<b>ESTIMATED DISTURBED ACRES</b>	<b>0</b>	<b>ACRES</b>	

STATE OF MISSOURI  
 RICHARD W. ORR  
 NUMBER  
 PE-202203387  
 PROFESSIONAL ENGINEER

THIS SHEET HAS BEEN SIGNED, SEALED AND DATED ELECTRONICALLY.

DATE PREPARED  
 7/18/2024

ROUTE STATE  
 VAR. MO

DISTRICT SHEET NO.  
 NW 1

COUNTY  
 HOLT / AND / NOD

JOB NO.  
 JNW0028

CONTRACT ID.

PROJECT NO.

BRIDGE NO.

DESCRIPTION

DATE

MISSOURI HIGHWAYS AND TRANSPORTATION COMMISSION

105 WEST CAPITOL  
 JEFFERSON CITY, MO 65102  
 1-888-ASK-MODOT (1-888-275-6636)















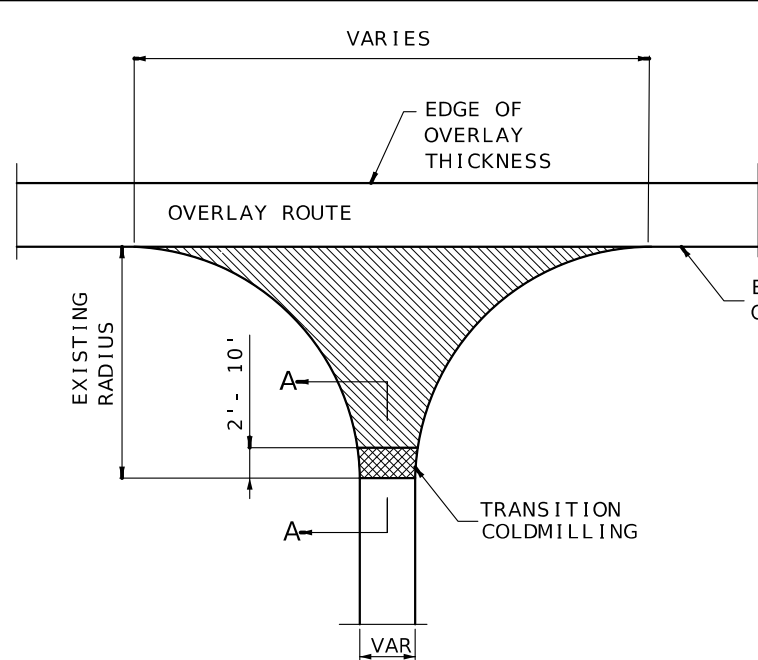




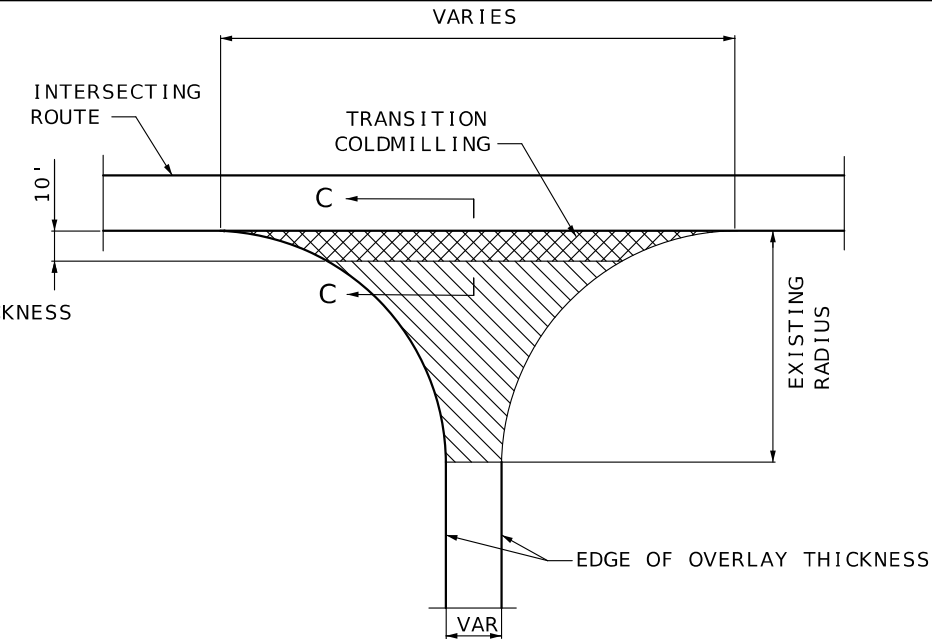




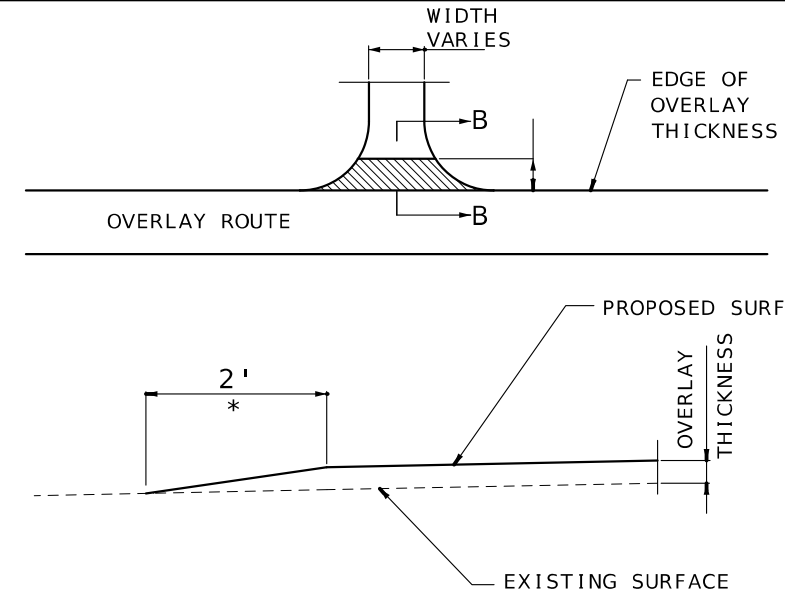




TYPICAL STATE ROUTE JUNCTION

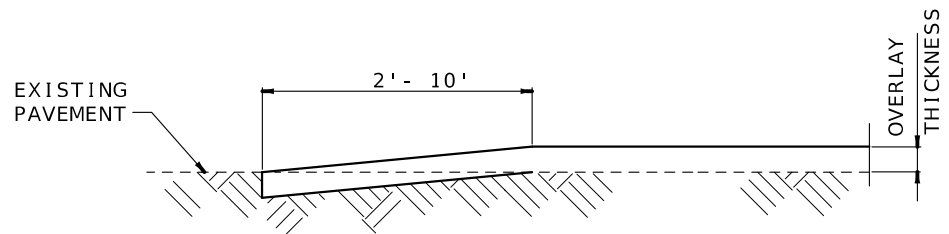


BEGINNING AND END OF PROJECT AT INTERSECTING ROUTE

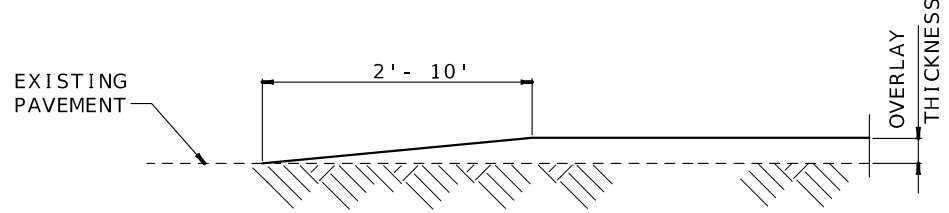


SECTION B-B

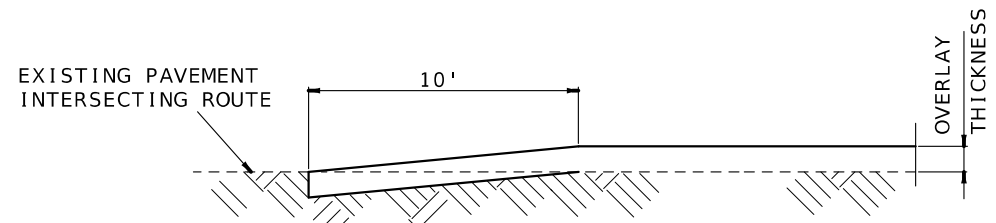
TYPICAL ENTRANCE (FIELD, PRIVATE OR COUNTY ROAD)  
\* TAPER AT 1:1 FOR FIELD ENTRANCE



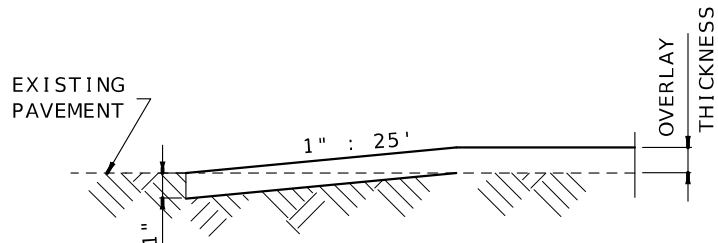
SECTION A-A  
TYPICAL STATE ROUTE JUNCTION (COLDMILLED TRANSITION)



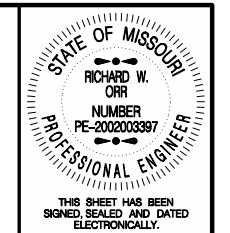
ALTERNATE SECTION A-A  
TYPICAL STATE ROUTE JUNCTION (TAPERED TRANSITION)



SECTION C-C  
DEPTH TRANSITIONS BEGINNING AND END OF PROJECT AT INTERSECTING ROUTE



TRAVELWAY DEPTH TRANSITIONS BEGINNING AND END OF PROJECT NOT AT INTERSECTING ROUTE AND AT EXCEPTIONS



DATE PREPARED		2/15/2024	
ROUTE	STATE	VAR.	MO
DISTRICT	SHEET NO.	NW	4
COUNTY			
VARIOUS			
JOB NO.			
JNW0028			
CONTRACT ID.			
PROJECT NO.			
BRIDGE NO.			

DATE	DESCRIPTION
9/8/23	ADDENDUM TO ADD SHEET

MISSOURI HIGHWAYS AND TRANSPORTATION COMMISSION

105 WEST CAPITOL  
JEFFERSON CITY, MO 65102  
1-888-ASK-MODOT (1-888-275-6636)

