



THIS SHEET HAS BEEN SIGNED, SEALED AND DATED ELECTRONICALLY.

DATE PREPARED
9/5/2024
ROUTE Z STATE MO
DISTRICT CD SHEET NO. 3
COUNTY CALLAWAY
JOB NO. JCD0149
CONTRACT ID.
PROJECT NO.
BRIDGE NO.

WATERBORNE PAVEMENT MARKING, TYPE P BEADS						
APPROX. LOG MILE	APPROX. LOG MILE	LENGTH FT.	LOCATION	4" SOLID YELLOW LF.	4" SOLID WHITE LF.	REMARKS
0.000	9.733	51390.24	RTE Z	102780.48	102780.48	RTE Z MAINLINE
			TOTAL =	102780.48	102780.48	
			USE =	102781	102781	

NOTE: ALL PAVEMENT MARKINGS TO MATCH EXISTING. LOCATE BEFORE MILLING OR RESURFACING.

PERFORMED THERMOPLASTIC				
LOG MILE	LOCATION	PREFORMED THERMOPLASTIC PAVEMENT MARKING LEFT/RIGHT ARROW EA.	PREFORMED THERMOPLASTIC PAVEMENT MARKING 24 IN. WHITE LF.	REMARKS
0.004	RTE Z		12	RTE Z AND BUSINESS 54 INTERSECTION
0.005	RTE Z		12	RTE Z AND BUSINESS 54 INTERSECTION
0.018	RTE Z	1		LEFT TURN - TOWARDS BUSINESS 54 SOUTH
	TOTAL	1	24	
	USE	1	24	

GUARDRAIL (MIDWEST GUARDRAIL SYSTEM - MASH APPROVED)							
LOG MILE	LOG MILE	LOCATION	MGS BRIDGE APPROACH TRANSITION (NO CURB) EA.	MGS GUARDRAIL (LF)	TYPE A CRASHWORTHY END TERMINAL (MASH) EA.	SHAPING SLOPES CLASS III 100 FT.	REMARKS
3.386	3.41	RTE Z	1	37.5	1	1.5	BRIDGE A4253 - NW CORNER
3.383	3.41	RTE Z	1	37.5	1	1.5	BRIDGE A4253 - SW CORNER
3.435	3.462	RTE Z	1	37.5	1	1.5	BRIDGE A4253 - NE CORNER
3.435	3.459	RTE Z	1	37.5	1	1.5	BRIDGE A4253 - SE CORNER
7.802	7.826	RTE Z	1	37.5	1	1.5	BRIDGE A4254 - NW CORNER
7.802	7.826	RTE Z	1	37.5	1	1.5	BRIDGE A4254 - SW CORNER
7.854	7.878	RTE Z	1	37.5	1	1.5	BRIDGE A4254 - NE CORNER
7.854	7.878	RTE Z	1	37.5	1	1.5	BRIDGE A4254 - SE CORNER
		TOTALS	8	300	8	12	
		USE	8	300	8	12	

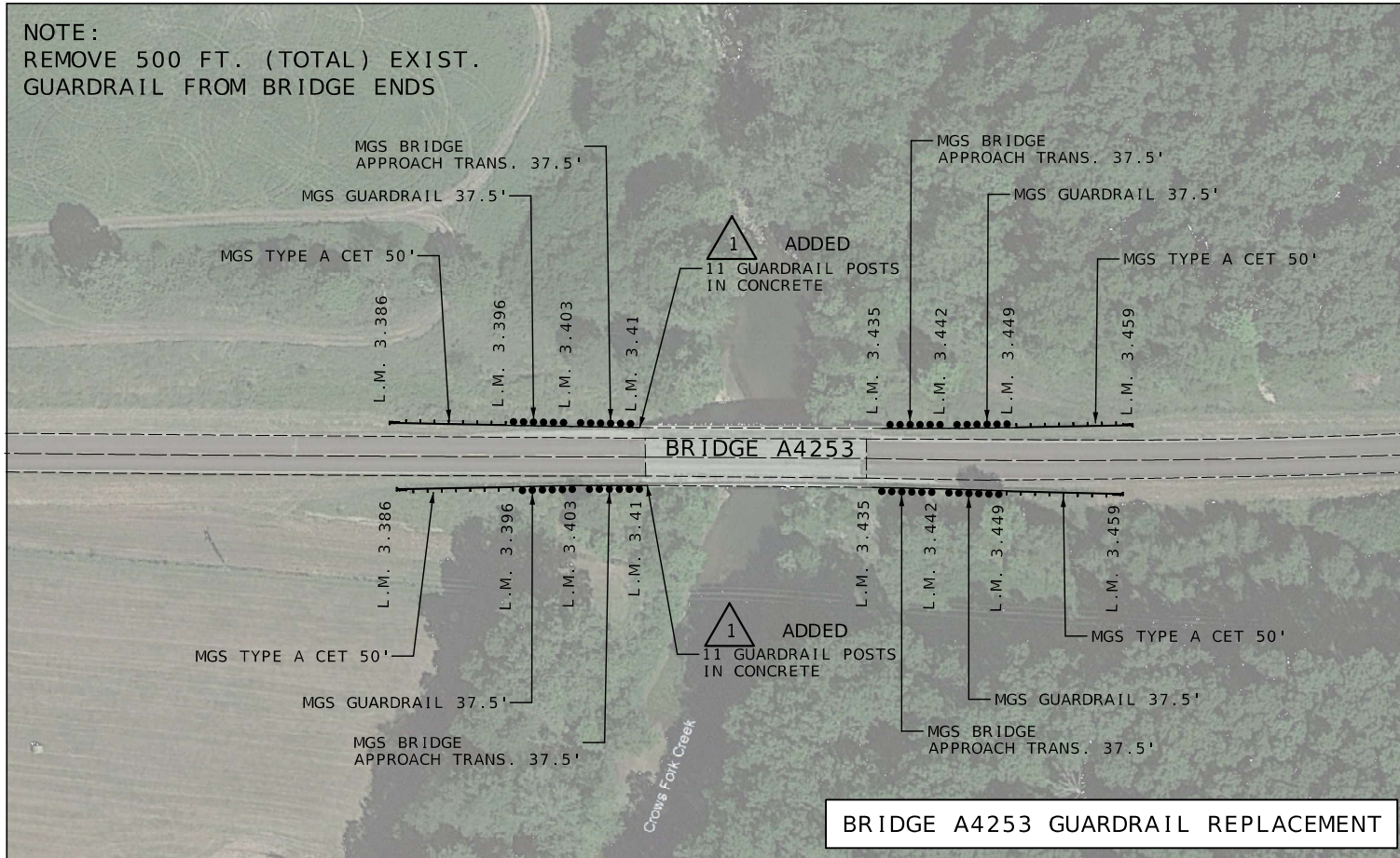
LOOP DETECTORS			
LOG MILE	LOG MILE	QUANTITY (EA)	REMARKS
0.005	0.013	2	SEE SPECIAL SHEET 2 FOR DETAILS
	TOTAL	2	

1 ADDED

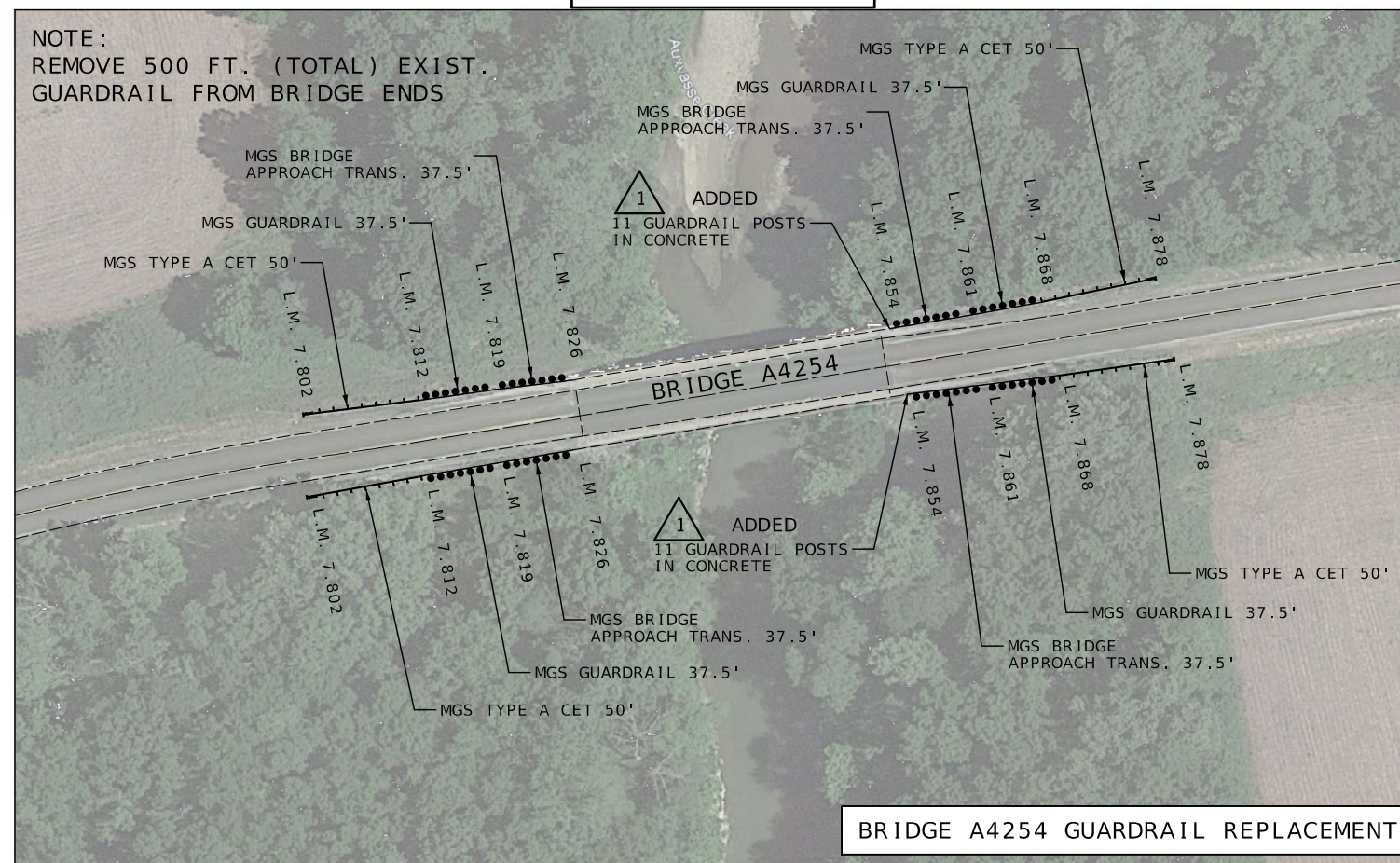
GUARDRAIL POSTS IN CONCRETE EA.
11
11
11
11
44
44

DESCRIPTION
DATE
MISSOURI HIGHWAYS AND TRANSPORTATION COMMISSION





NOT TO SCALE



THIS SHEET HAS BEEN
SIGNED, SEALED AND DATED
ELECTRONICALLY.

DATE PREPARED
9/5/2024

ROUTE	STATE
Z	MO
DISTRICT	SHEET NO.
CD	7

COUNTY
CALLAWAY

JOB NO.
JCD0149

CONTRACT ID.

PROJECT NO.

BRIDGE NO.

DATE	DESCRIPTION

MISSOURI HIGHWAYS AND TRANSPORTATION
COMMISSION

105 WEST CAPITOL
JEFFERSON CITY, MO 65102
1-888-ASK-MODOT (1-888-273-6636)