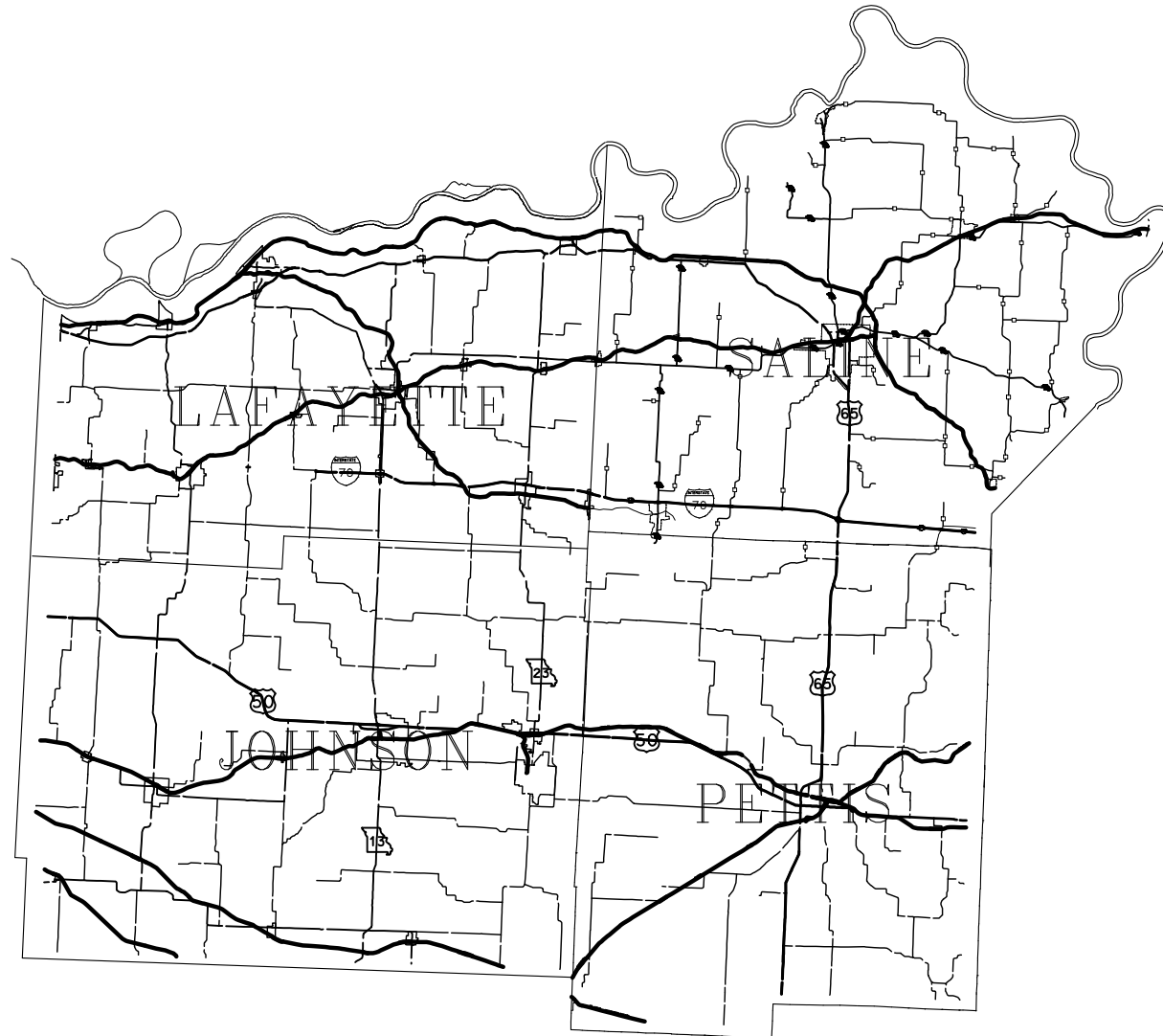


MISSOURI HIGHWAYS AND TRANSPORTATION COMMISSION
PLANS FOR PROPOSED
STATE HIGHWAY
VARIOUS COUNTIES



NOT TO SCALE



CONVENTIONAL SYMBOLS (USED IN PLANS)

	EXISTING	NEW
BUILDINGS AND STRUCTURES		
GUARD RAIL		
CONCRETE RIGHT-OF-WAY MARKER		
STEEL RIGHT-OF-WAY MARKER		
LOCATION SURVEY MARKER		
UTILITIES		
FIBER OPTICS	— FO —	— FO —
OVERHEAD TELEPHONE		
UNDERGROUND TELEPHONE	— T —	— T —
OVERHEAD POWER		
UNDERGROUND POWER	— P —	— P —
GAS	— G —	— G —
WATER	— W —	— W —
MANHOLE		
FIRE HYDRANT		
WATER VALVE		
WATER METER		
DROP INLET		
DITCH BLOCK		
GROUND MOUNTED SIGN		
LIGHT POLE		
H-FRAME POWER POLE		
TELEPHONE PEDESTAL		
FENCE		
CHAIN LINK		
WOVEN WIRE		
GATE POST		
BENCHMARK		


NOTE: DASHED OR OPEN SYMBOLS INDICATE
EXISTING FEATURES

INDEX OF SHEETS

DESCRIPTION	SHEET NUMBER
TITLE SHEET	1
TRAFFIC CONTROL SHEETS (TC).....	2-10

STATE OF MISSOURI	
CRAIG SKORSETH NUMBER PE-2018000273	
PROFESSIONAL ENGINEER	
<i>Craig Skorseth</i>	
MISSOURI STATE BOARD OF PROFESSIONAL ENGINEERS CRAIG SKORSETH - CIVIL M.O.S.E.-2018000273 DATE PREPARED	
2 / 6 / 2025	
ROUTE VAR	STATE MO
DISTRICT KC	SHEET NO. 1
COUNTY VARIOUS	
JOB NO. JKR0305	
CONTRACT ID.	

PROJECT NO.
BRIDGE NO.

[illegible]

MISSOURI HIGHWAYS AND TRANSPORTATION
COMMISSION

105 WEST CAPITOL
JEFFERSON CITY, MO 65102
1-888-ASK-MODOT (1-888-275-6636)

JOB ORDER CONTRACTING

CONCRETE PAVEMENT REPAIR AT VARIOUS
US ROUTES, MISSOURI NUMBERED ROUTES, AND
INTERSTATE LOCATIONS IN THE RURAL
KANSAS CITY DISTRICT.

Sign Spacing, Device Spacing
and Channelizing Taper Lengths

TAPER LENGTHS AND SPACING OF CHANNELIZING DEVICES					
SPEED MPH	MINIMUM TAPER LENGTHS (L) FOR LANE WIDTHS (W)			MAXIMUM CHANNELIZER SPACING (FT)	
	10 FT	11 FT	12 FT	THROUGH TAPER	THROUGH WORK AREA
0-35	205	225	245	35	40
40-45	450	495	540	40	80
50-55	550	605	660	50	80
60-70	700	770	840	60	120

SIGN SPACING (S) FOR ADVANCE SIGN SERIES (1) (2)		
SPEED MPH	UNDIVIDED HIGHWAYS (FT)	DIVIDED HIGHWAYS (FT)
0-35	200	200
40-45	350	500
50-55	500	1000
60-70	1000	SA-1000 SB-1500 SC-2640

NOTES:

DIMENSIONS IN FEET UNLESS OTHERWISE NOTED.

(1) SPACING BETWEEN SIGNS AND SPACING BETWEEN LAST SIGN AND FLAGGER, BEGINNING OF TAPER, OR SIGNED CONDITION

(2) SPACINGS MAY BE ADJUSTED AS NECESSARY TO MEET FIELD CONDITIONS

LONGITUDINAL BUFFER SPACE (B)	
SPEED MPH	BUFFER SPACE (FEET)
0-35	250
40-45	360
50-55	495
60-70	730

TAPER LENGTH (L):

L = WS FOR 40 MPH OR MORE

L = $\frac{WS^2}{60}$ FOR 35 MPH OR LESS

FOR SHOULDER TAPER USE L/3

WHERE:

L = TAPER LENGTH IN FEET

W = LATERAL SHIFT IN FEET

S = POSTED SPEED IN MPH

TRAFFIC CONTROL DEVICES

GENERAL NOTES:

- SEE STANDARD PLAN 616.10 FOR DETAILS AND ITEMS NOT SHOWN
- EXISTING SIGNS SHALL BE COVERED DURING WORKING HOURS ONLY IF IN CONFLICT WITH TRAFFIC CONTROL PLANS.
- NO DIRECT PAYMENT WILL BE MADE FOR RELOCATING, COVERING, UNCOVERING OR REMOVING SIGNS.
- CONES ALLOWABLE FOR DAYTIME OPERATIONS ONLY.
- LOCATE FLASHING ARROW PANEL AT BEGINNING OF TAPER WHEN FEASIBLE, ARROW PANELS ARE ALWAYS LOCATED BEHIND CHANNELIZERS OR CONES.

TRAFFIC CONTROL LEGEND

- SIGN (SINGLE SIDED)
- SIGN (DOUBLE SIDED)
- FLAGGER
- DIRECTIONAL INDICATOR BARRICADE
- CHANNELIZER
- BARRICADE
- CHANGEABLE MESSAGE BOARD
- TRUCK MOUNTED ATTENUATOR
W/ FLASHING ARROW



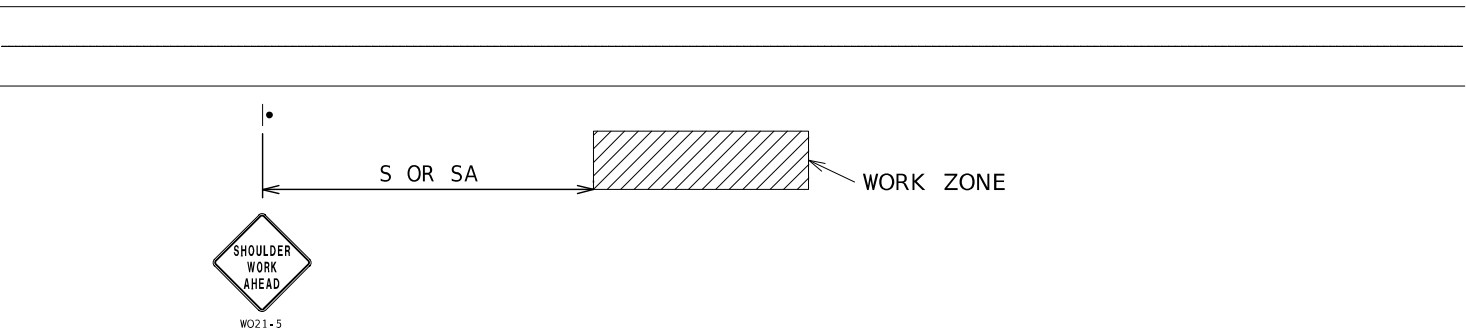
DATE PREPARED 1/12/2025	
ROUTE VAR	STATE MO
DISTRICT KC	SHEET NO. 2
COUNTY VARIOUS	
JOB NO. JKR0305	
CONTRACT ID.	
PROJECT NO.	
BRIDGE NO.	

DESCRIPTION	DATE

MISSOURI HIGHWAYS AND TRANSPORTATION COMMISSION



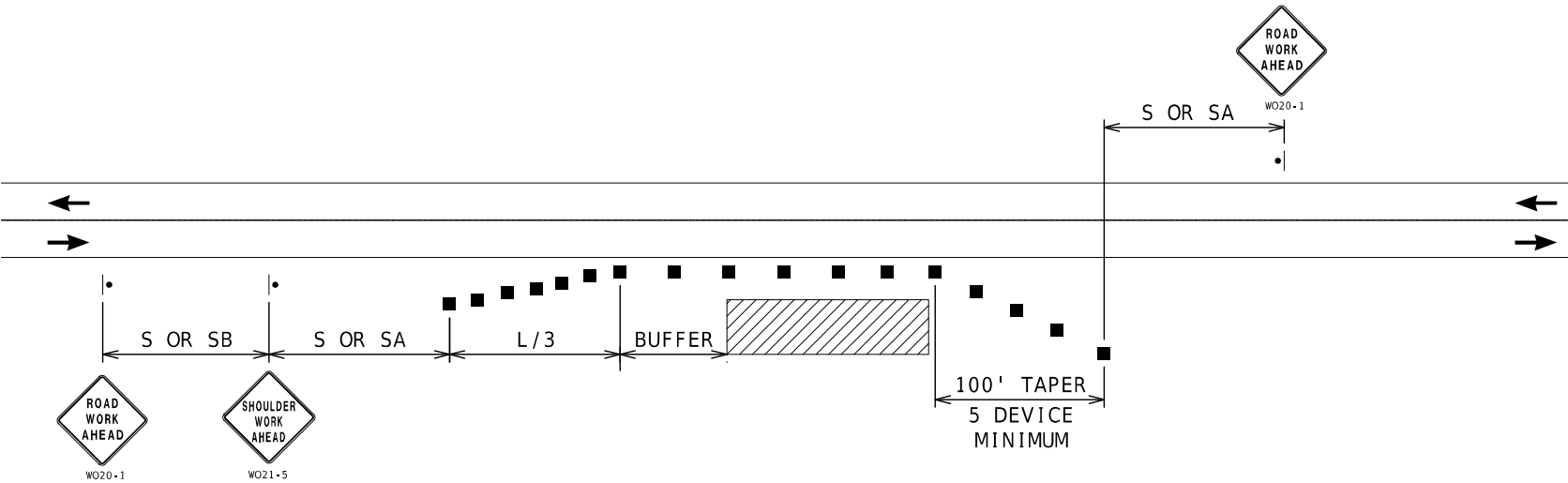
105 WEST CAPITOL
JEFFERSON CITY, MO 65102
1-888-ASK-MODOT (1-888-275-6636)



WORK BEYOND SHOULDER - UNDIVIDED OR DIVIDED ROADWAYS

USED FOR WORK THAT OCCURS OFF THE ROADWAY SHOULDER BUT WITHIN THE CLEAR ZONE.
NOT TO BE USED WHEN WORK VEHICLES ARE PARKED ALONG THE SHOULDER EVEN WHEN
THE WORK IS BEING PERFORMED OFF THE SHOULDER.

NOTES :
SEE TCP SHEET 1 FOR SIGN SPACING AND TAPER LENGTHS.



SHOULDER WORK - UNDIVIDED ROADWAYS

USED FOR WORK ON SHOULDER OR FOR WORK OFF SHOULDER
WITH WORK VEHICLES PARKED ON THE SHOULDER.


NOTES :
SEE TCP SHEET 1 FOR SIGN SPACING AND TAPER LENGTHS.



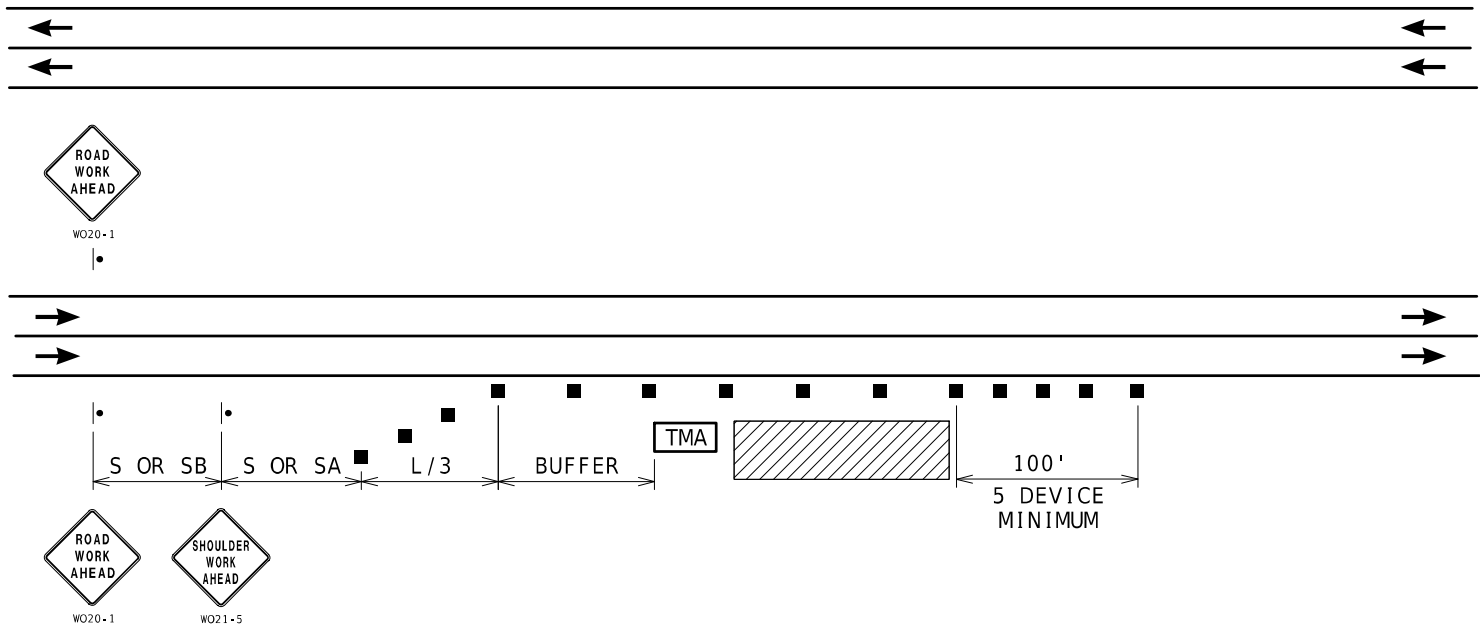
DATE PREPARED 1/12/2025	
ROUTE VAR	STATE MO
DISTRICT KC	SHEET NO. 3
COUNTY VARIOUS	
JOB NO. JKR0305	
CONTRACT ID.	
PROJECT NO.	
BRIDGE NO.	

DATE	DESCRIPTION

MISSOURI HIGHWAYS AND TRANSPORTATION COMMISSION

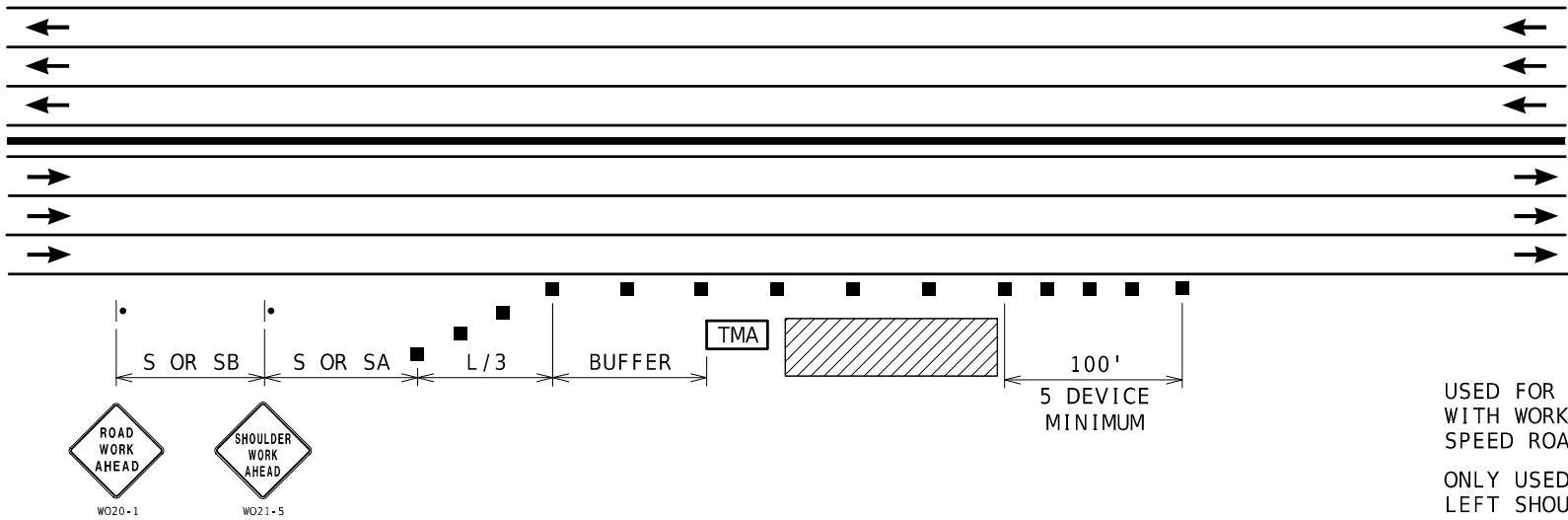


105 WEST CAPITOL
JEFFERSON CITY, MO 65102
1-888-ASK-MODOT (1-888-275-6636)



RIGHT SHOULDER WORK- HIGH SPEED DIVIDED ROADWAYS

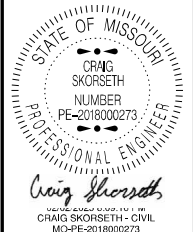
NOTES: USED FOR WORK ON SHOULDER OR FOR WORK OFF SHOULDER
SEE TCP SHEET 1 FOR SIGN SPACING AND TAPER LENGTHS. WITH WORK VEHICLES PARKED ON THE SHOULDER OF A HIGH SPEED ROADWAY.



USED FOR WORK ON SHOULDER OR FOR WORK OFF SHOULDER
WITH WORK VEHICLES PARKED ON THE SHOULDER OF A HIGH
SPEED ROADWAY.
ONLY USED FOR SIX OR MORE LANE FREEWAYS WITH NARROW
LEFT SHOULDER ADJACENT TO CONCRETE MEDIAN BARRIER

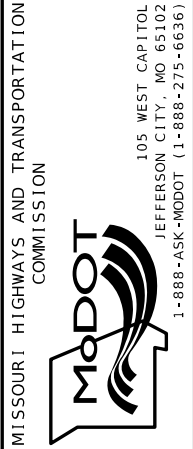
RIGHT SHOULDER WORK
MULTI-LANE FREEWAYS WITH MEDIAN BARRIER

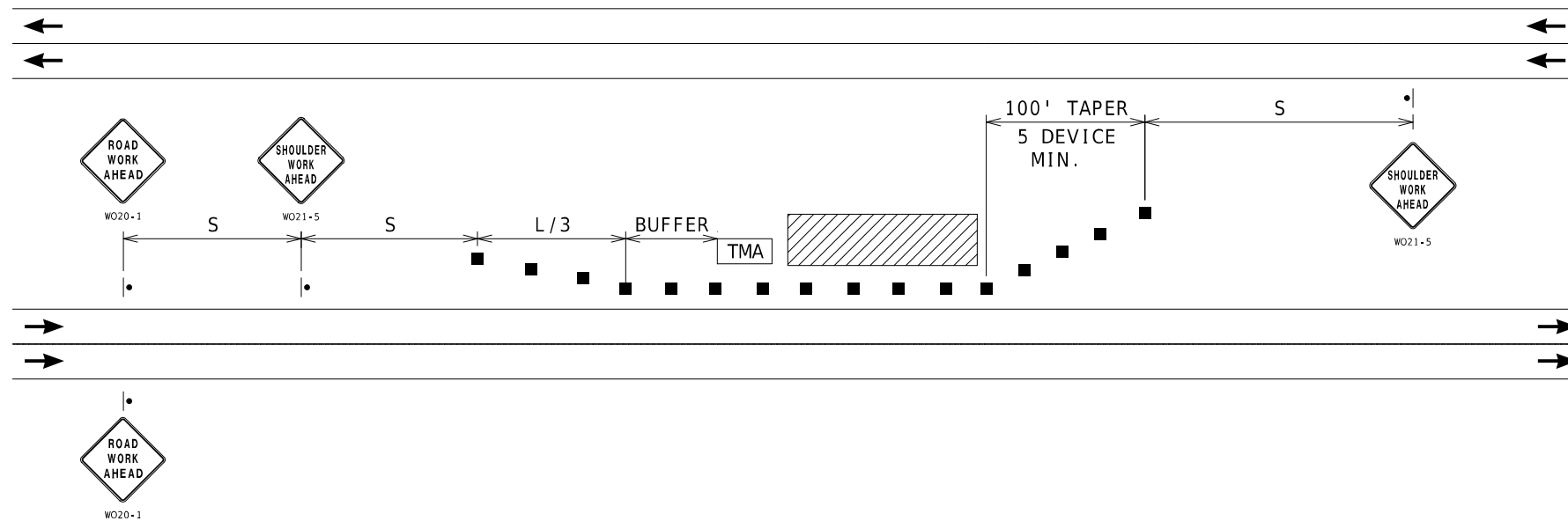
NOTES: SEE TCP SHEET 1 FOR SIGN SPACING AND TAPER LENGTHS.



DATE PREPARED 1/12/2025	
ROUTE VAR	STATE MO
DISTRICT KC	SHEET NO. 4
COUNTY VARIOUS	
JOB NO. JKR0305	
CONTRACT ID.	
PROJECT NO.	
BRIDGE NO.	

DATE	DESCRIPTION



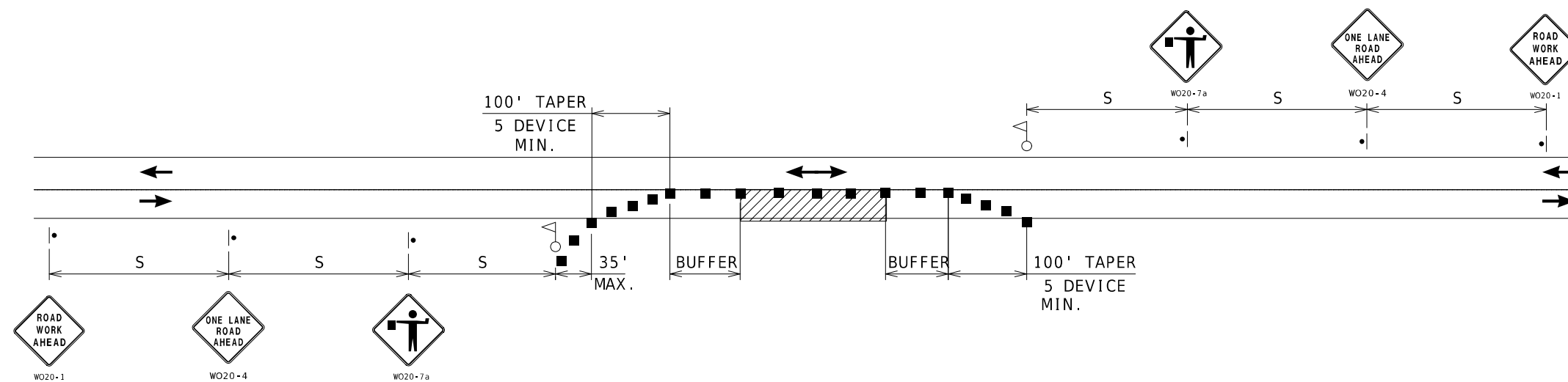


LEFT SHOULDER WORK- HIGH SPEED DIVIDED ROADWAYS

USED FOR WORK ON SHOULDER OR FOR WORK OFF SHOULDER
WITH WORK VEHICLES PARKED ON THE SHOULDER OF A HIGH SPEED ROADWAY.

NOTES :

SEE TCP SHEET 1 FOR SIGN SPACING AND TAPER LENGTHS.



ONE-LANE TWO-WAY OPERATION WITH FLAGGERS

A MINIMUM OF TWO FLAGGERS WILL BE REQUIRED TO DIRECT TRAFFIC. ADDITIONAL FLAGGERS MAY BE REQUIRED WHEN WORKING AT INTERSECTING STREETS OR RAMPS AS DIRECTED BY THE ENGINEER. NO DIRECT PAYMENT WILL BE MADE FOR FLAGGERS

NOTES :

SEE TCP SHEET 1 FOR SIGN SPACING AND TAPER LENGTHS.



CRAIG SKORSETH - CIVIL

MO-PE-2018000273
DATE PREPARED
1/12/2025

ROUTE	STATE
VAR	MO

DISTRICT	SHEET NO.
KC	5

COUNTY
VARIOUS

JOB NO.
JKR0305

CONTRACT ID.

PROJECT NO.

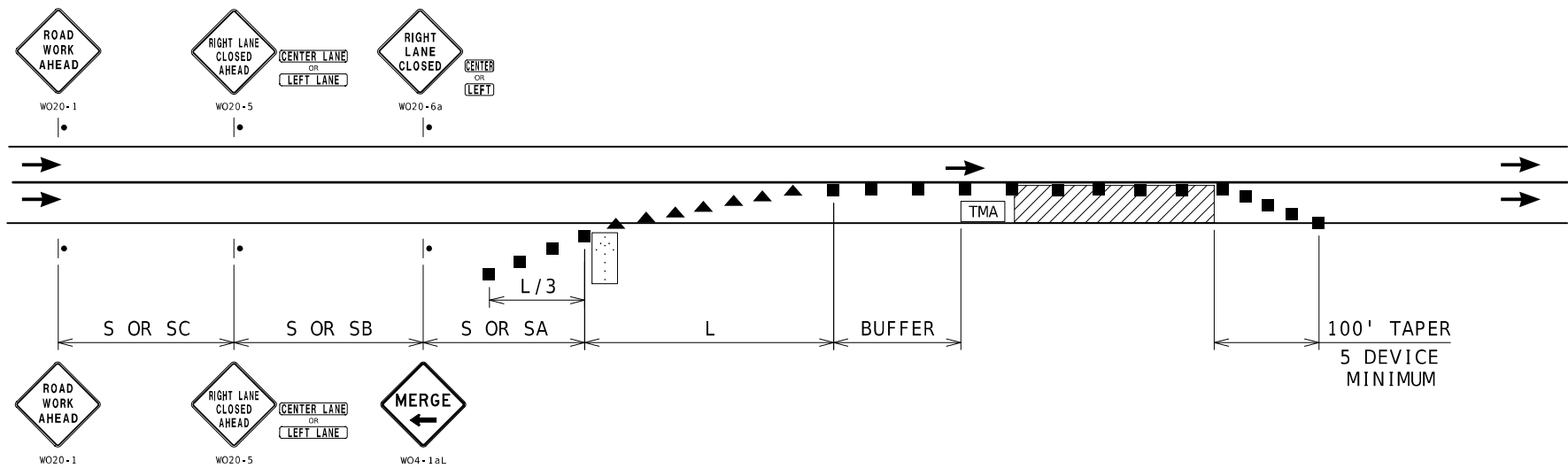
BRIDGE NO.

--	--	--	--	--	--	--	--

[illegible]MISSOURI HIGHWAYS AND TRANSPORTATION
COMMISSION

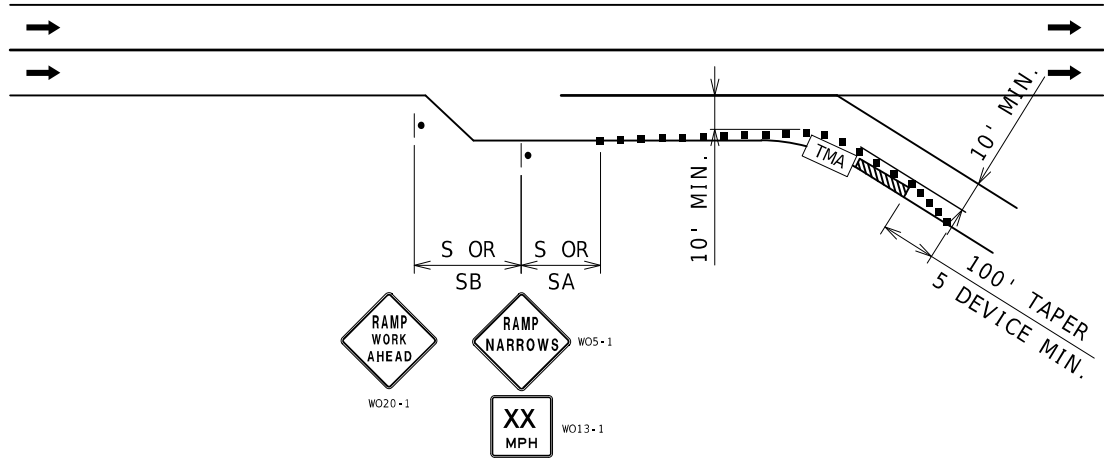
103 WEST CAPITOL
JEFFERSON CITY, MO 65102
1-888-ASK-MODOT (1-888-275-6636)

TRAFFIC CONTROL
SHEET 4 OF 9



NOTES:
SEE TCP SHEET 1 FOR SIGN SPACING AND TAPER LENGTHS.

SINGLE LANE CLOSURE



NOTES:
SEE TCP SHEET 1 FOR SIGN SPACING AND TAPER LENGTHS.

PARTIAL RAMP CLOSURE

STATE OF MISSOURI

CRAIG SKORSETH

NUMBER

PE-2018000273

PROFESSIONAL ENGINEER

Craig Skorseth

CRAIG SKORSETH - CIVIL

MO-PE-2018000273

DATE PREPARED

1/12/2025

ROUTE

VAR

DISTRICT

KC

STATE

MO

SHEET NO.

6

COUNTY

VARIOUS

JOB NO.

JKR0305

CONTRACT ID.

PROJECT NO.

BRIDGE NO.

DESCRIPTION

DATE

MISSOURI HIGHWAYS AND TRANSPORTATION COMMISSION

105 WEST CAPITOL

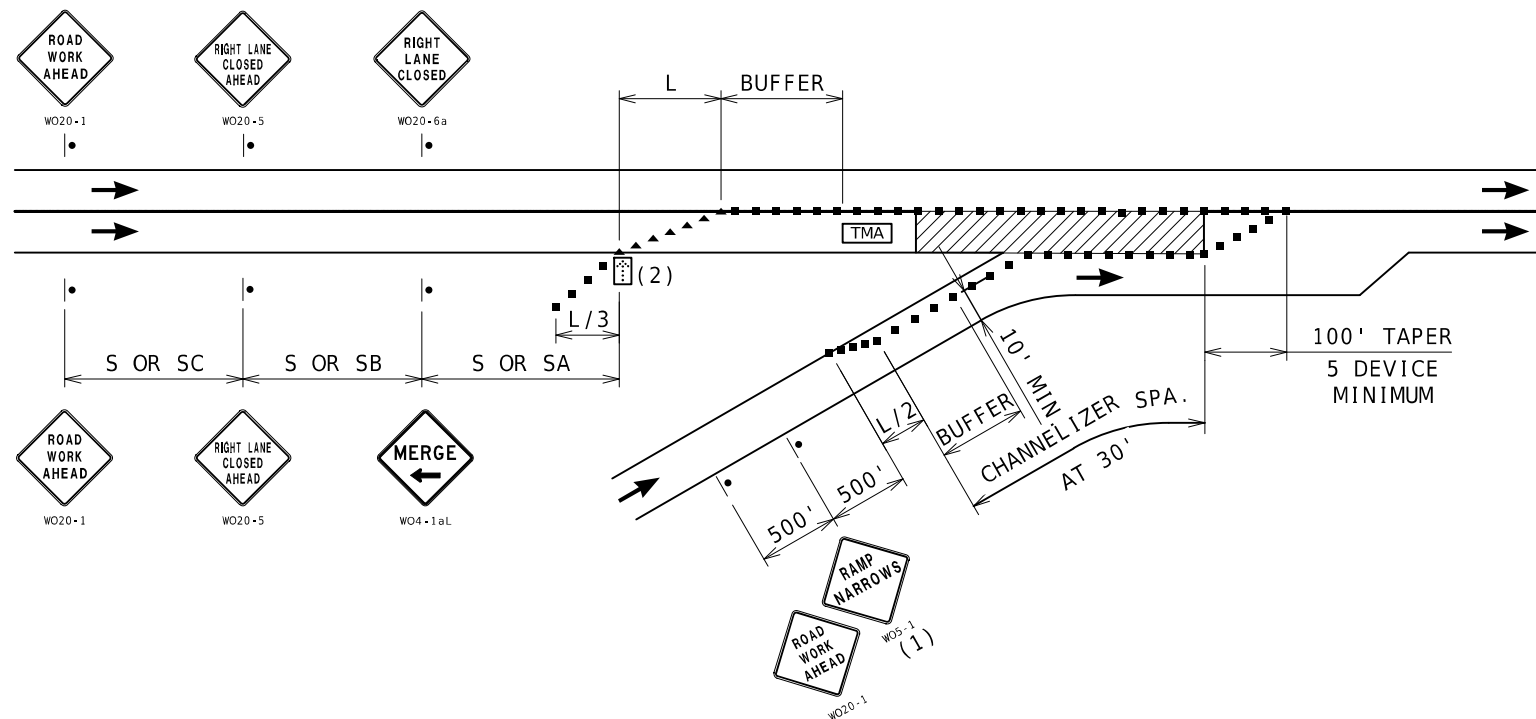
JEFFERSON CITY, MO 65102

1-888-ASK-MODOT (1-888-275-6636)

MODOT

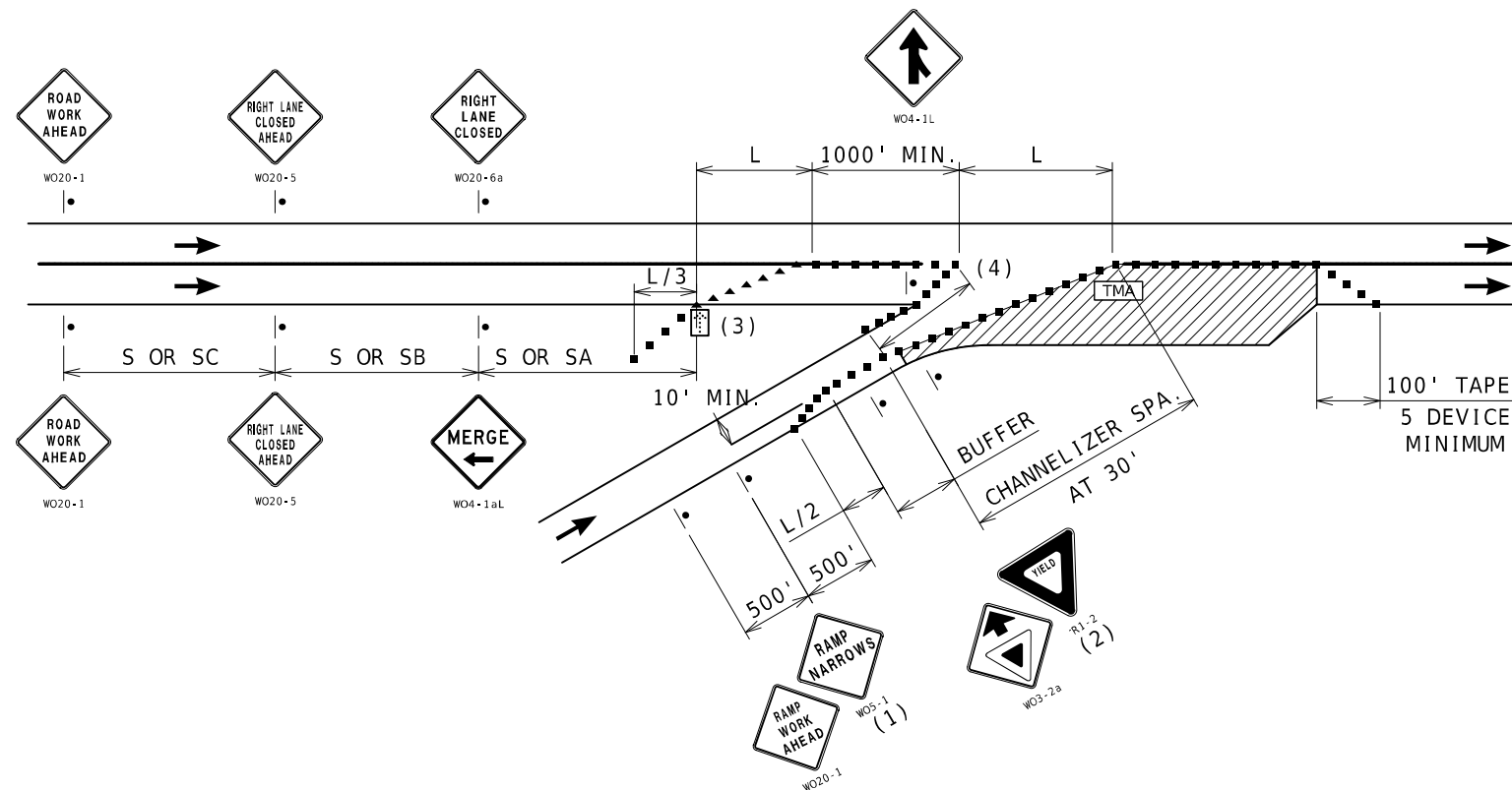
TRAFFIC CONTROL

SHEET 5 OF 9



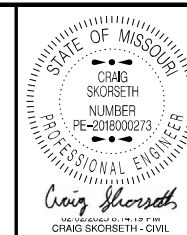
- NOTES:
- SEE TCP SHEET 1 FOR SIGN SPACING AND TAPER LENGTHS.
- (1) SIGN ONLY REQUIRED WHEN RAMP WIDTH IS REDUCED.
- (2) THE LOCATION OF THE SIGN SEQUENCE AND MERGE TAPER SHOULD BE ADJUCSTED SO THAT THE ARROW PANEL LOCATION IS NOT CONFUSING TO MOTORIST ON THE RAMP.

ENTRANCE RAMP AREA MAINLINE WORK



- NOTES:
- SEE TCP SHEET 1 FOR SIGN SPACING AND TAPER LENGTHS.
- (1) SIGN ONLY REQUIRED WHEN RAMP WIDTH IS REDUCED.
- (2) SIGN SHOULD BE PLACED ON THE RAMP TO PROVIDE ADEQUATE VISIBILITY OF MAINLINE TRAFFIC.
- (3) THE LOCATION OF THE SIGN SEQUENCE AND MERGE TAPER SHOULD BE ADJUCSTED SO THAT THE ARROW PANEL LOCATION IS NOT CONFUSING TO MOTORIST ON THE RAMP.
- (4) CHANNELIZER SPACING AT 30'.

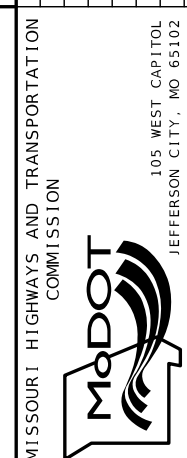
ENTRANCE RAMP AREA ACCELERATION LANE WORK

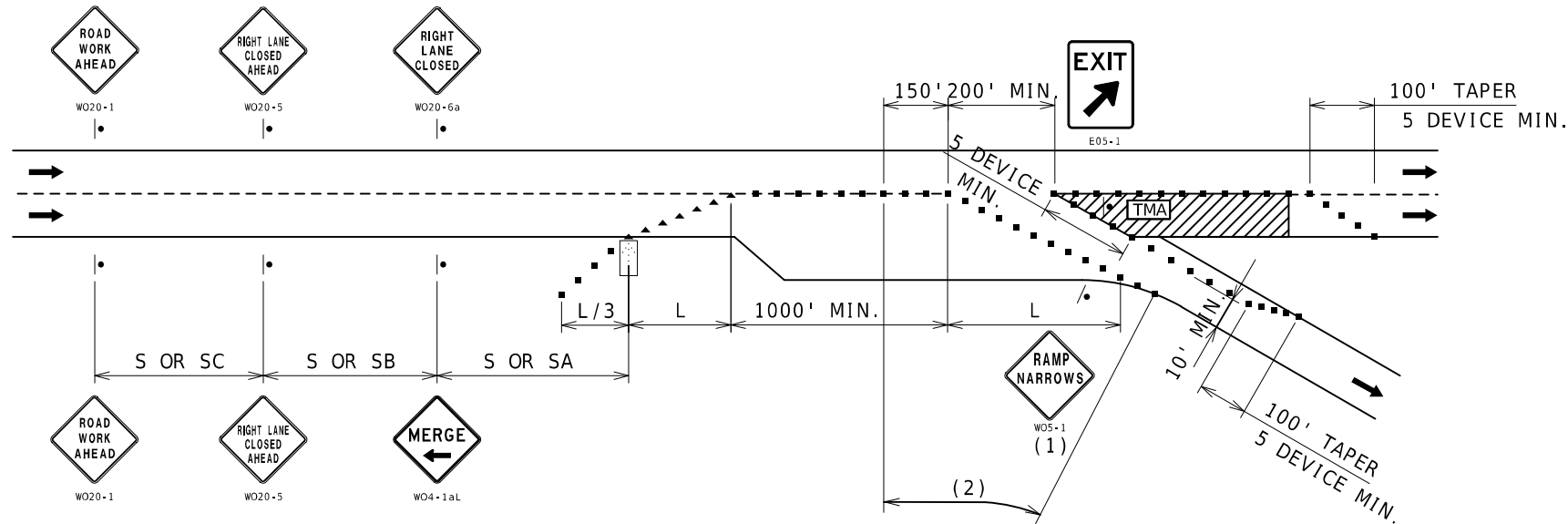


DATE PREPARED	1/12/2025
ROUTE	VAR
STATE	MO
DISTRICT	KC
SHEET NO.	7
COUNTY	VARIOUS
JOB NO.	JKR0305
CONTRACT ID.	

PROJECT NO.	
BRIDGE NO.	

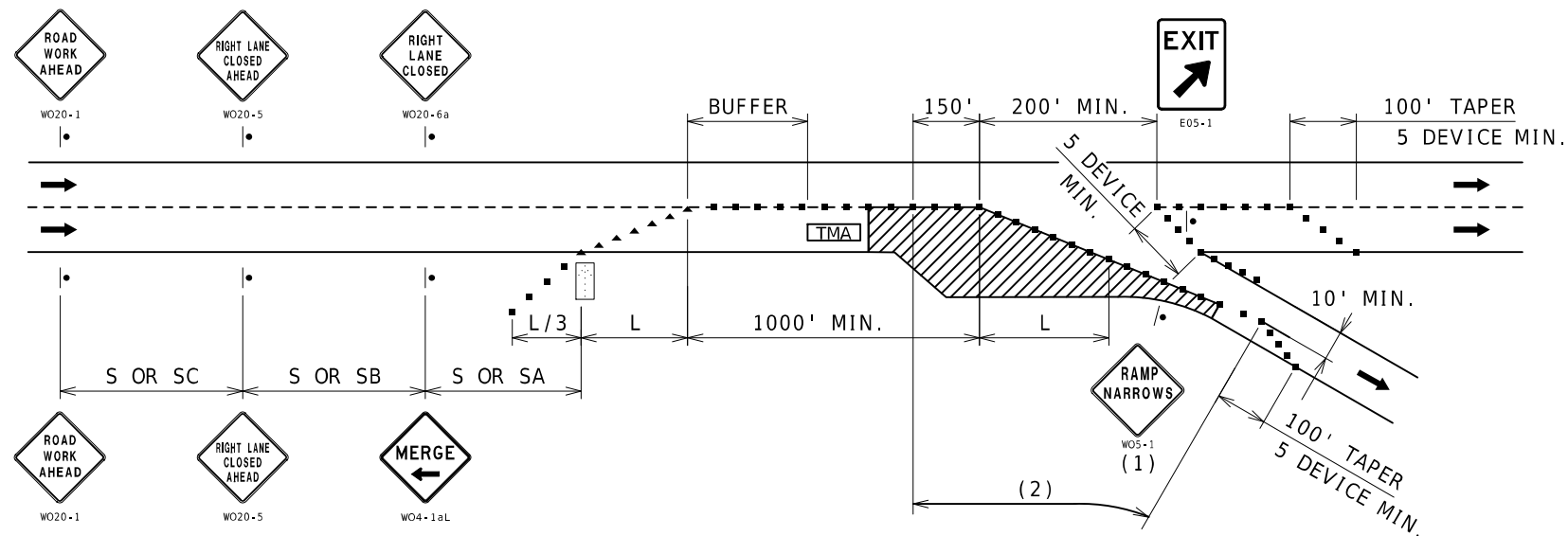
DATE	DESCRIPTION





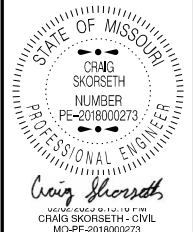
NOTES:
 SEE TCP SHEET 1 FOR SIGN SPACING AND TAPER LENGTHS.
 (1) SIGN ONLY REQUIRED WHEN RAMP WIDTH IS REDUCED.
 (2) CHANNELIZER SPACING AT 50'.

EXIT RAMP AREA MAINLINE WORK



NOTES:
 SEE TCP SHEET 1 FOR SIGN SPACING AND TAPER LENGTHS.
 (1) SIGN ONLY REQUIRED WHEN RAMP WIDTH IS REDUCED.
 (2) CHANNELIZER SPACING AT 50'.

EXIT RAMP AREA DECELERATION LANE WORK

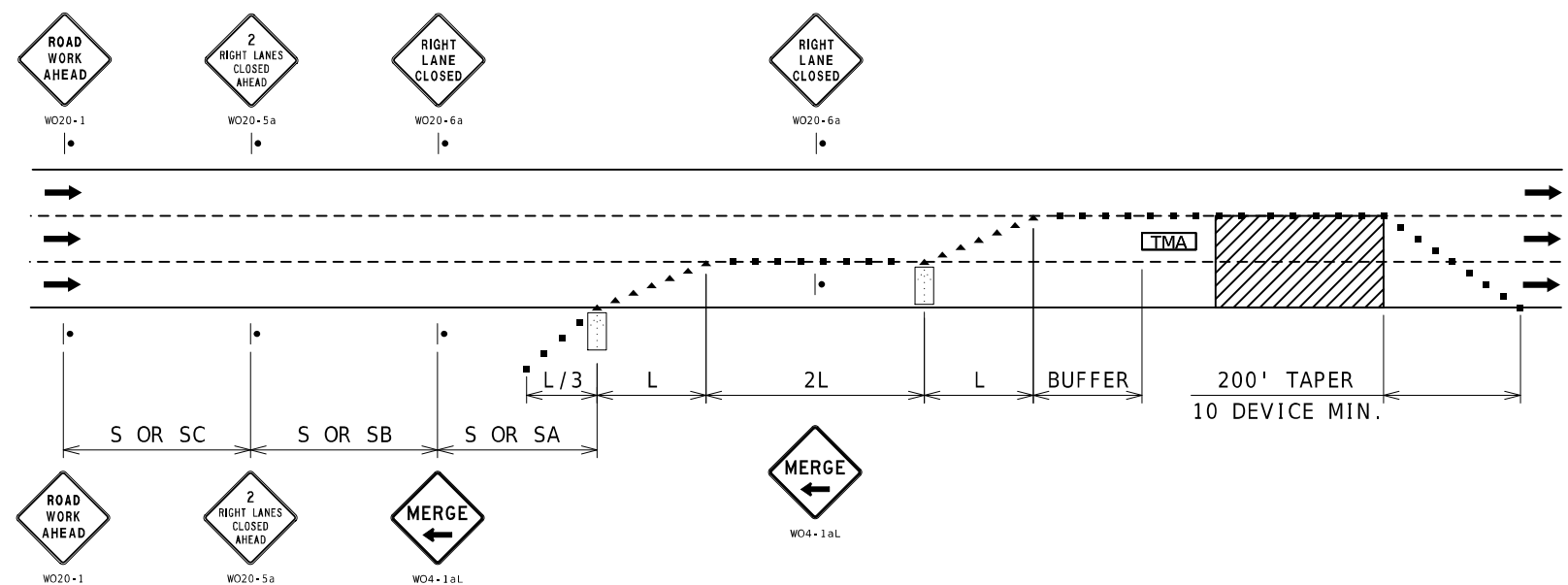


DATE PREPARED 1/12/2025	
ROUTE VAR	STATE MO
DISTRICT KC	SHEET NO. 8
COUNTY VARIOUS	
JOB NO. JKR0305	
CONTRACT ID.	
PROJECT NO.	
BRIDGE NO.	

DATE	DESCRIPTION

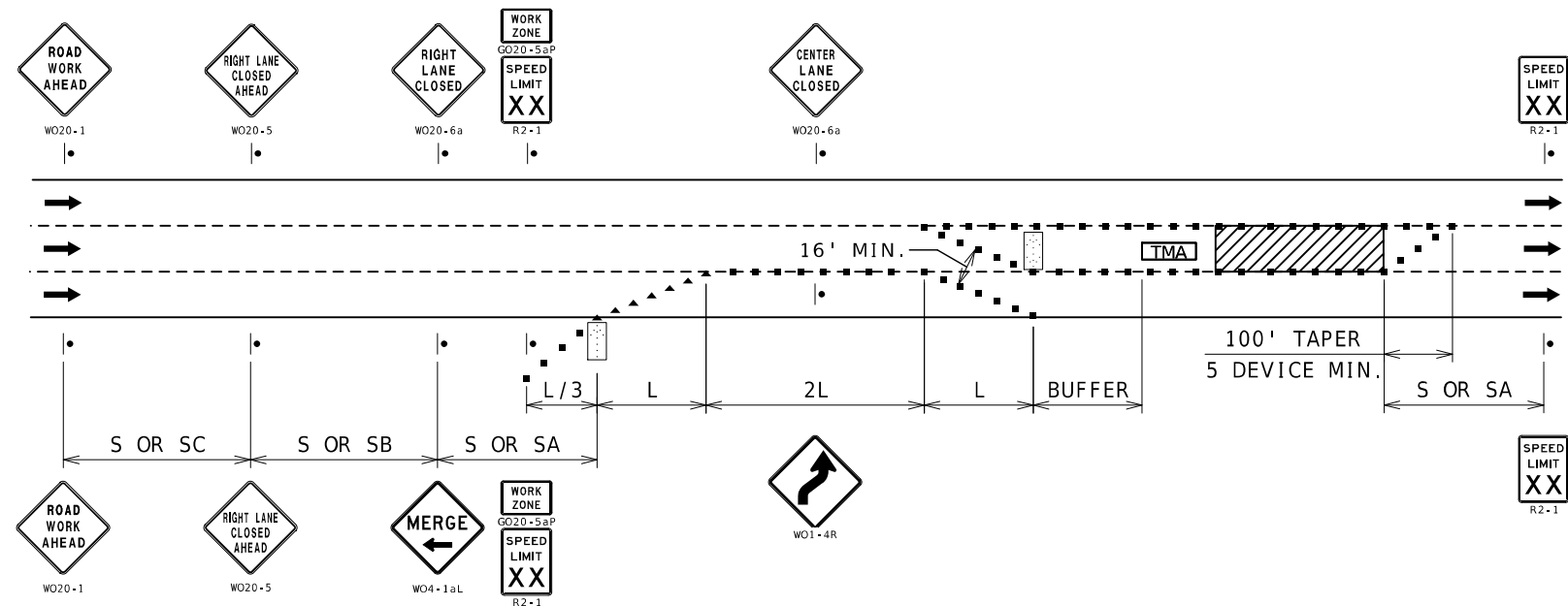
MISSOURI HIGHWAYS AND TRANSPORTATION COMMISSION

105 WEST CAPITOL
JEFFERSON CITY, MO 65102
1-888-ASK-MODOT (1-888-275-6636)



NOTES:
SEE TCP SHEET 1 FOR SIGN SPACING AND TAPER LENGTHS.

DOUBLE LANE CLOSURE



NOTES:
SEE TCP SHEET 1 FOR SIGN SPACING AND TAPER LENGTHS.

INTERIOR LANE CLOSURE

STATE OF MISSOURI

CRAIG SKORSETH

NUMBER

PE-2018000273

PROFESSIONAL ENGINEER

Craig Skorseth

CRAIG SKORSETH - CIVIL

MO-PE-2018000273

DATE PREPARED

1/12/2025

ROUTE

VAR

STATE

MO

DISTRICT

KC

SHEET NO.

10

COUNTY

VARIOUS

JOB NO.

JKR0305

CONTRACT ID.

PROJECT NO.

BRIDGE NO.

DESCRIPTION

DATE

MISSOURI HIGHWAYS AND TRANSPORTATION COMMISSION

MoDOT

105 WEST CAPITOL

JEFFERSON CITY, MO 65102

1-888-ASK-MODOT (1-888-275-6636)

TRAFFIC CONTROL

SHEET 9 OF 9