

DESIGN DESIGNATION

A.A.D.T. - 2025 = 3829  
A.A.D.T. - 2035 = 4193  
DHV = 50.0% / 50.0%  
T = 8.74%  
V = 55 M.P.H.

FUNCTIONAL CLASSIFICATION-RURAL MAJOR COLLECTOR

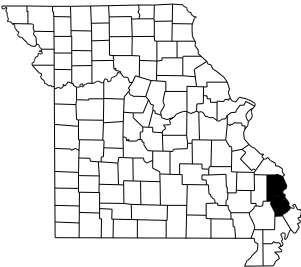
NORMAL RIGHT OF WAY REQUIRED

CONVENTIONAL SYMBOLS  
(USED IN PLANS)

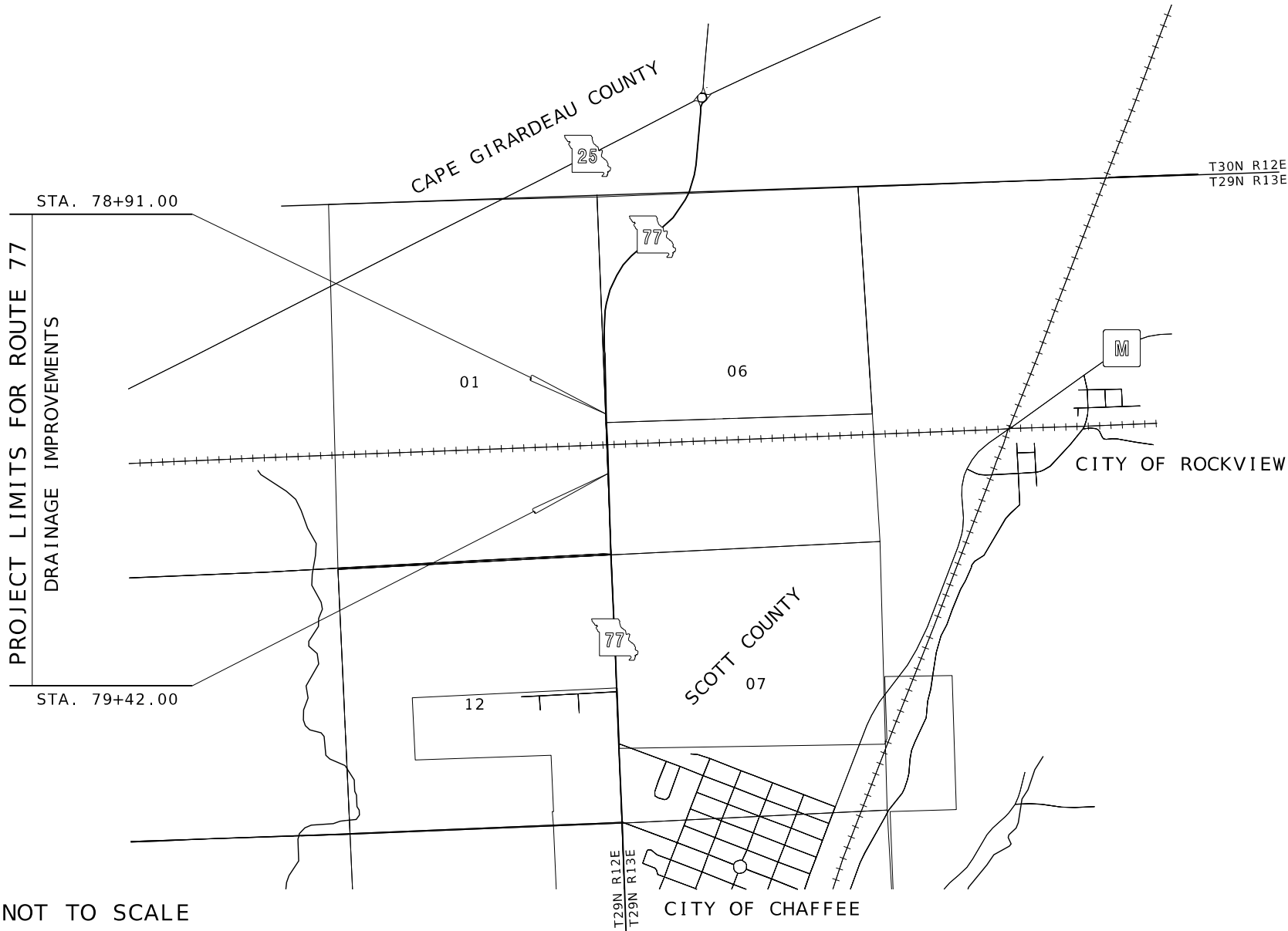
	EXISTING	NEW
BUILDINGS AND STRUCTURES		
GUARD RAIL		
GUARD CABLE		
CONCRETE RIGHT-OF-WAY MARKER		
STEEL RIGHT-OF-WAY MARKER		
LOCATION SURVEY MARKER		
UTILITIES		
FIBER OPTICS	-FO-	-FO-
OVERHEAD CABLE TV	-OTV-	-OTV-
UNDERGROUND CABLE TV	-UTV-	-UTV-
OVERHEAD TELEPHONE	-OT-	-OT-
UNDERGROUND TELEPHONE	-UT-	-UT-
OVERHEAD POWER	-OE-	-OE-
UNDERGROUND POWER	-UE-	-UE-
SANITARY SEWER	-S-	-S-
STORM SEWER	-SS-	-SS-
GAS	-G-	-G-
WATER	-W-	-W-
MANHOLE		
FIRE HYDRANT		
WATER VALVE		
WATER METER		
DROP INLET		
DITCH BLOCK		
GROUND MOUNTED SIGN		
LIGHT POLE		
H-FRAME POWER POLE		
TELEPHONE PEDESTAL		
FENCE		
CHAIN LINK		
WOVEN WIRE		
GATE POST		
BENCHMARK		

NOTE: DASHED OR OPEN SYMBOLS INDICATE EXISTING FEATURES

MISSOURI HIGHWAYS AND TRANSPORTATION COMMISSION  
PLANS FOR PROPOSED  
STATE HIGHWAY  
SCOTT & CAPE GIRARDEAU COUNTIES



KEY MAP  
LOCATION OF SCOTT &  
CAPE GIRARDEAU COUNTIES



NOT TO SCALE

THE EXISTENCE AND APPROXIMATE LOCATION OF UTILITY FACILITIES KNOWN TO EXIST, AS SHOWN ON THE PLANS, ARE BASED ON THE BEST INFORMATION AVAILABLE TO THE COMMISSION AT THIS TIME. THIS INFORMATION IS PROVIDED BY THE COMMISSION "AS-IS" AND THE COMMISSION EXPRESSLY DISCLAIMS ANY REPRESENTATION OR WARRANTY AS TO THE COMPLETENESS, ACCURACY, OR SUITABILITY OF THE INFORMATION FOR ANY USE. RELIANCE UPON THIS INFORMATION IS DONE AT THE RISK AND PERIL OF THE USER, AND THE COMMISSION SHALL NOT BE LIABLE FOR ANY DAMAGES THAT MAY ARISE FROM ANY ERROR IN THE INFORMATION. IT IS, THEREFORE, THE RESPONSIBILITY OF THE CONTRACTOR TO VERIFY THE EXISTENCE, LOCATION AND STATUS OF ANY FACILITY. SUCH VERIFICATION INCLUDES DIRECT CONTACT WITH THE LISTED UTILITIES.

INDEX OF SHEETS

DESCRIPTION	SHEET NUMBER
TITLE SHEET -----	1
TYPICAL SECTIONS (TS) (1 SHEETS)---	2
QUANTITIES (QU) (2 SHEETS)-----	3
PLAN-PROFILE (PP)-----	4
REFERENCE POINTS (RP)-----	5
COORDINATE POINTS (CP)-----	6
SPECIAL SHEETS (SS)-----	7-8
TRAFFIC CONTROL SHEETS (TC)-----	9-10
CULVERT SECTIONS (CS)-----	11
CROSS SECTIONS (XS)-----	12



THIS SHEET HAS BEEN  
SIGNED, SEALED, AND  
DATED ELECTRONICALLY.

DATE PREPARED  
10/22/2025

ROUTE 77 STATE MO

DISTRICT SE SHEET NO. 1

COUNTY  
CAPE GIRARDEAU/SCOTT

JOB NO.  
J9M0283

CONTRACT ID.

PROJECT NO.

BRIDGE NO.

DESCRIPTION

DATE

DESCRIPTION

DATE

DESCRIPTION

DATE

DESCRIPTION

DATE

DESCRIPTION

DATE

DESCRIPTION

DATE

DESCRIPTION

DATE

DESCRIPTION

DATE

DESCRIPTION

DATE

DESCRIPTION

DATE

DESCRIPTION

DATE

DESCRIPTION

DATE

DESCRIPTION

DATE

DESCRIPTION

DATE

LENGTH OF PROJECT

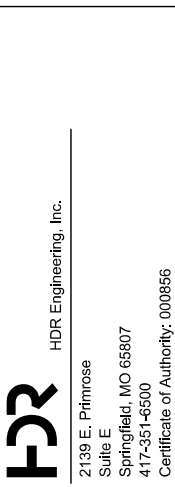
BEGINNING OF PROJECT	STA. 78+91.00
END OF PROJECT	STA. 79+42.00

APPARENT LENGTH 51.00 FEET

EQUATIONS AND EXCEPTIONS:

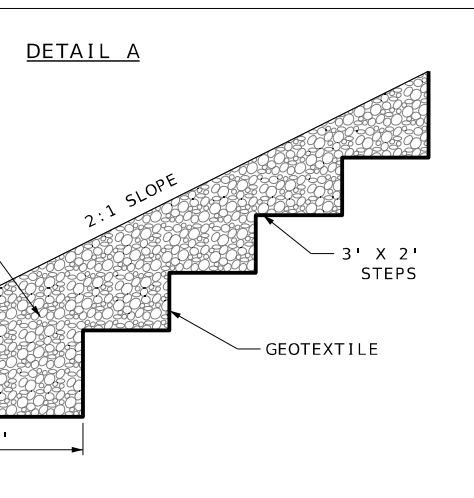
TOTAL CORRECTIONS	0.00 FEET
NET LENGTH OF PROJECT	51.00 FEET
STATE LENGTH	0.01 MILES

FOR INFORMATION ONLY  
ESTIMATED DISTURBED ACRES 0.1 ACRES





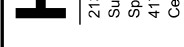
1. SEE SPECIAL SHEET FOR DITCH GRADING.
2. DITCH BOTTOM WIDTH VARIES FROM 10' TO 6'.



NOT TO SCALE

---

TYPICAL SECTION  
SHEET 1 OF 1





REMOVAL OF IMPROVEMENTS - INFORMATION ONLY						
SHEET NUMBER	FROM STA	TO STA	ROADWAY	LOCATION	DESCRIPTION	REMARKS
4	79+00	79+30	RTE 77	LT	36" CMP	30 LF
TOTAL 1 LUMP SUM						

NOTE: TABLE IS PROVIDED FOR INFORMATION ONLY. REMOVAL OF IMPROVEMENTS LUMP SUM INCLUDES ITEMS LISTED ON THE TABLE AND ALL OTHER INCIDENTAL REMOVALS WITHIN PLANS NECESSARY TO PERFORM THE PROPOSED WORK.

TEMPORARY EROSION CONTROL					
SHEET NUMBER	STATION	LOCATION	ROCK DITCH CHECK (LF)	SEDIMENT REMOVAL (CY)	REMARKS
11	79+26	RT	20	1.0	
		PAY TOTAL	20	1	

SEDIMENT REMOVAL ESTIMATED AT 1 CY PER DITCH CHECK.

MISC. SEEDING AND MULCHING					
FROM STATION	TO STATION	ROADWAY	LOCATION	COOL SEASON SEEDING AND MULCHING (ACRE)	REMARKS
78+91.00	79+42.00	RTE Y	LT, RT	0.07	
			PROJECT TOTAL	0.07	
			USE	1 LUMP SUM	

NOTE: SEEDING ACRES FOR INFORMATION ONLY.

EARTHWORK					
FROM STATION	TO STATION	ROADWAY	CUT (CY)	UNCLASSIFIED EXCAVATION (CY)	REMARKS
78+91.00	79+42.00	RTE 77	44.4	44.4	FROM DITCH GRADING
78+91.00	79+42.00	RTE 77	142.1	142.1	FROM ROCK BLANKET
			SUBTOTAL	186.5	
			PAY TOTAL	187	

ROCK WEDGE						
FROM STATION	TO STATION	ROADWAY	FURNISHING 18" TYPE 1 ROCK BLANKET (CY)	PLACING 18" TYPE 1 ROCK BLANKET (CY)	SUBSURFACE DRAINAGE GEOTEXTILE (SY)	REMARKS
78+91.00	79+42.00	RTE 77	142.1	142.1	215.7	
			SUBTOTAL	142.1	215.7	
			PAY TOTAL	143	216	

DRAINAGE						
SHEET NUMBER	STA	48" STEEL CULVERT - HORIZONTAL BORE (LF)	GROUP A FES 48" (EA)	48" FLAP GATE (EA)	CLASS 3 EXCAVATION (CY)	REMARKS
11	78+99	261.5	1	1	15.6	
		SUBTOTAL	261.5	1	15.6	
		PAY TOTAL	262	1	16	

STEEL PIPE IS TO BE 48" OD X 0.75" WT GRADE B STEEL PIPE WITH 35,00 LB SMYS.  
STEEL PIPE IS TO BE COATED WITH FBE AND ARO COATINGS.  
SEE JSP FOR ADDITIONAL INFORMATION REGARDING THE PIPE MATERIAL AND BORE.  
SEE JSP FOR FLAP GATE DETAILS.

CONTRACTOR FURNISHED SURVEYING & STAKING
LUMP SUM = 1

MOBILIZATION
LUMP SUM = 1



THIS SHEET HAS BEEN SIGNED, SEALED, AND DATED ELECTRONICALLY.

DATE PREPARED  
10/14/2025

ROUTE 77 STATE MO

DISTRICT SE SHEET NO. 3

COUNTY

CAPE GIRARDEAU/SCOTT

JOB NO.  
J9M0283

CONTRACT ID.

PROJECT NO.

BRIDGE NO.

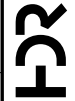
DESCRIPTION	DATE						

MISSOURI HIGHWAYS AND TRANSPORTATION COMMISSION



105 WEST CAPITOL  
JEFFERSON CITY, MO 65102  
1-888-ASK-MODOT (1-888-275-6636)

HDR Engineering, Inc.



2139 E. Primrose  
Suite E  
Springfield, MO 65807  
417-351-6500  
Certificate of Authority: 000856



SIGN	SIZE	AREA	QTY	TOTAL	RELOC	RELOC	SIGN	DESCRIPTION	SIGN	SIZE	AREA	QTY	TOTAL	RELOC	RELOC	SIGN	DESCRIPTION	ITEM	TOTAL	EFFECTIVE: 07-01-2025	
IN.	SQ.FT.	EACH	SQ.FT.	EACH	SQ.FT.	NO.	IN.		SQ.FT.	EACH	SQ.FT.	EACH	SQ.FT.	NO.	NUMBER	QTY		DESCRIPTION			
WARNING SIGNS									GUIDE SIGNS									6122008		IMPACT ATTENUATOR 40 MPH (SAND BARRELS)	
WO1-1L	48X48	16.00						TURN (SYMBOL LEFT)	E05-1	36X48	12.00						GORE EXIT	6122009		IMPACT ATTENUATOR 45 MPH (SAND BARRELS)	
WO1-1R	48X48	16.00						TURN (SYMBOL RIGHT)	E05-2	48X36	12.00						EXIT OPEN	6122010		IMPACT ATTENUATOR 50 MPH (SAND BARRELS)	
WO1-2L	48X48	16.00						CURVE (SYMBOL LEFT)	E05-2a	48X36	12.00						EXIT CLOSED	6122012		IMPACT ATTENUATOR 55 MPH (SAND BARRELS)	
WO1-2R	48X48	16.00						CURVE (SYMBOL RIGHT)	GO20-1	60X24	10.00						ROAD WORK NEXT XX MILES	6122014		IMPACT ATTENUATOR 60 MPH (SAND BARRELS)	
WO1-3L	48X48	16.00						REVERSE TURN (SYMBOL LEFT)	GO20-2	48X24	8.00	2	16.00			4	END ROAD WORK	6122017		IMPACT ATTENUATOR 65 MPH (SAND BARRELS)	
WO1-3R	48X48	16.00						REVERSE TURN (SYMBOL RIGHT)	GO20-4	36X18	4.50						PILOT CAR FOLLOW ME	6122019		IMPACT ATTENUATOR 70 MPH (SAND BARRELS)	
WO1-4L	48X48	16.00						REVERSE CURVE (SYMBOL LEFT)	GO20-4a	42X30	8.75						PILOT CAR IN USE WAIT & FOLLOW	6122020		REPLACEMENT SAND BARREL	
WO1-4R	48X48	16.00						REVERSE CURVE (SYMBOL RIGHT)	GO20-4a	118X12	1.50						PILOT CAR IN USE WAIT & FOLLOW	6122030		IMPACT ATTENUATOR (RELOCATION)	
WO1-4bL	48X48	16.00						DOUBLE ARROW REVERSE CURVE (SYMBOL LEFT)	GO20-5aP	36X24	6.00	2	12.00			54	WORK ZONE (PLAQUE)	6122040		WORK ZONE CRASH CUSHION (NARROW)	
WO1-4bR	48X48	16.00						DOUBLE ARROW REVERSE CURVE (SYMBOL RIGHT)	MO4-8a	24X18	3.00						END DETOUR	6122041		WORK ZONE CRASH CUSHION (RELOCATION)	
WO1-4cL	48X48	16.00						TRIPLE ARROW REVERSE CURVE (SYMBOL LEFT)	MO4-9L	48X36	12.00						DETOUR (LEFT)	6123001	1	TRUCK MOUNTED ATTENUATOR (TMA)	
WO1-4cR	48X48	16.00						TRIPLE ARROW REVERSE CURVE (SYMBOL RIGHT)	MO4-9R	48X36	12.00						DETOUR (RIGHT)	6161012		BUOYS (BOATS KEEP OUT)	
WO1-6	60X30	12.50						HORIZONTAL ARROW (SYMBOL)	MO4-9P	48X12	4.00						STREET NAME (PLAQUE)	6161013		BUOYS (NO WAKE)	
WO1-6a	72X36	18.00						HORIZ. ARROW (SYMBOL ON PERMANENT BARRICADE)	MO4-10L	48X18	6.00						DETOUR ARROW (LEFT)	6161014		SPECIAL SIGN ASSEMBLY (BOATS KEEP OUT)	
WO1-7	60X30	12.50						DOUBLE HEAD HORIZONTAL ARROW (SYMBOL)	MO4-10R	48X18	6.00						DETOUR ARROW (RIGHT)	6161020		CHANNELIZER (DRUM-LIKE)	
WO1-7a	72X36	18.00						DOUBLE HEAD HORIZ. ARROW (SYMBOL ON PERM. BARR.)	REGULATORY SIGNS									6161022		CHANNELIZER (CONE)	
WO1-8	18X24	3.00						CHEVRON (SYMBOL)	R1-1	48X48	13.25						STOP	6161025	40	CHANNELIZER (TRIM-LINE)	
WO1-8a	30X36	7.50						CHEVRON (SYMBOL FOR DIVIDED HIGHWAYS)	R1-2	48TRI.	6.93						YIELD	6161026		CHANNELIZER (VERTICAL PANEL)	
WO3-1	48X48	16.00						STOP AHEAD (SYMBOL)	R1-2a	36X36	9.00						TO ONCOMING TRAFFIC (PLAQUE)	6161030		TYPE 3 MOVEABLE BARRICADE	
WO3-2	48X48	16.00						YIELD AHEAD (SYMBOL)	R1-3P	30X12	2.50						ALL WAY (PLAQUE)	6161033		DIRECTION INDICATOR BARRICADE	
WO3-3	48X48	16.00						SIGNAL AHEAD (SYMBOL)	R2-1	36X48	12.00	4	48.00			4/25	SPEED LIMIT XX	6161040		FLASHING ARROW PANEL	
WO3-4	48X48	16.00						BE PREPARED TO STOP	R3-1	48X48	16.00						NO RIGHT TURN (SYMBOL)	6161047		TYPE 3 OBJECT MARKER	
WO3-5	48X48	16.00						SPEED LIMIT AHEAD	R3-2	48X48	16.00						NO LEFT TURN (SYMBOL)	6161055		SEQUENTIAL FLASHING WARNING LIGHT	
WO4-1L	48X48	16.00						MERGE (SYMBOL FROM LEFT)	R3-3	36X36	9.00						NO TURNS	6161070		TUBULAR MARKER	
WO4-1R	48X48	16.00						MERGE (SYMBOL FROM RIGHT)	R3-4	48X48	16.00						NO U-TURN (SYMBOL)	6161095		RADAR SPEED ADVISORY SYSTEM	
WO4-1aL	48X48	16.00						MERGE (LEFT)	R3-7L	30X30	6.25						LEFT LANE MUST TURN LEFT			CHANGEABLE MESSAGE SIGN, COMMISSION FURNISHED/RETAINED	
WO4-1aR	48X48	16.00						MERGE (RIGHT)	R3-7R	30X30	6.25						RIGHT LANE MUST TURN RIGHT	6161096			
WO5-1	48X48	16.00	2	32.00			43	ROAD/BRIDGE/RAMP NARROWS	R4-1	36X48	12.00						DO NOT PASS			CHANGEABLE MESSAGE SIGN WITHOUT COMM. INTERFACE, CONTRACTOR FURNISHED/RETAINED	
WO5-3	48X48	16.00						ONE LANE BRIDGE	R4-2	36X48	12.00						PASS WITH CARE	6161098A		CHANGEABLE MESSAGE SIGN WITH COMM. INTERFACE, CONTRACTOR FURNISHED/RETAINED	
WO5-5	48X48	16.00						NARROW LANES	R4-7a	36X48	12.00						KEEP RIGHT (HORIZONTAL ARROW)			CHANGEABLE MESSAGE SIGN WITH COMM. INTERFACE, CONTRACTOR FURNISHED/RETAINED	
WO6-1	48X48	16.00						DIVIDED HIGHWAY (SYMBOL)	R4-8a	36X48	12.00						KEEP LEFT (HORIZONTAL ARROW)	6161099		INTERFACE, CONTRACTOR FURNISHED/RETAINED	
WO6-2	48X48	16.00						DIVIDED HIGHWAY END (SYMBOL)	R5-1	30X30	6.25						DO NOT ENTER	6162000A		WORK ZONE TRAFFIC SIGNAL SYSTEM	
WO6-3	48X48	16.00						TWO WAY TRAFFIC (SYMBOL)	R5-1a	36X24	6.00						WRONG WAY	6162002		TEMPORARY LONG-TERM RUMBLE STRIPS	
WO7-3a	30X24	5.00						NEXT XX MILES (PLAQUE)	R6-1L	54X18	6.75						ONE WAY ARROW (LEFT)			TEMPORARY TRAFFIC BARRIER, CONTRACTOR FURNISHED/RETAINED	
WO8-1	48X48	16.00						BUMP	R6-1R	54X18	6.75						ONE WAY ARROW (RIGHT)	6173600D		TEMP. TRAFFIC BARRIER ANCHORED, CONTRACTOR FURNISHED/RETAINED	
WO8-2	48X48	16.00						DIP	R6-2L	24X30	5.00						ONE WAY (LEFT)			TEMP. TRAFFIC BARRIER ANCHORED, CONTRACTOR FURNISHED/RETAINED	
WO8-3	48X48	16.00						PAVEMENT ENDS	R6-2R	24X30	5.00						ONE WAY (RIGHT)	6173700B			
WO8-4	48X48	16.00						SOFT SHOULDER	R9-9	24X12	2.00						SIDEWALK CLOSED			TEMP. TRAFFIC BARRIER STIFFNESS TRANSITION CONTRACTOR FURNISHED/RETAINED	
WO8-5	48X48	16.00						SLIPPERY WHEN WET (SYMBOL)	R9-11L	24X18	3.00						SIDEWALK CLOSED AHEAD, (ARROW LEFT) CROSS HERE	6173706		TEMP. TRAFFIC BARRIER HEIGHT TRANSITION, CONTRACTOR FURNISHED/RETAINED	
WO8-6	48X48	16.00						TRUCK CROSSING	R9-11R	24X18	3.00						SIDEWALK CLOSED AHEAD, (ARROW RIGHT) CROSS HERE	6174000A		RELOCATING TEMPORARY TRAFFIC BARRIER	
WO8-6c	48X48	16.00						TRUCK ENTRANCE	R10-6	24X36	6.00						STOP HERE ON RED (45° ARROW)	6175010A		RELOCATING TEMP. TRAFFIC BARRIER ANCHORED	
WO8-7	36X36	9.00						LOOSE GRAVEL	R11-2	48X30	10.00						ROAD CLOSED	6175013		RELOCATING TEMP. TRAFFIC BARRIER STIFFNESS	
WO8-7a	36X36	9.00						FRESH OIL / LOOSE GRAVEL	R11-3a	60X30	12.50						ROAD CLOSED XX MILES AHEAD LOCAL TRAFFIC ONLY	6175020A		RELOCATING TEMP. TRAFFIC BARRIER HEIGHT	
WO8-9	48X48	16.00						LOW SHOULDER	R11-4	60X30	12.50						ROAD CLOSED TO THRU TRAFFIC	6208064A		TEMPORARY RAISED PAVEMENT MARKER	
WO8-11	48X48	16.00						UNEVEN LANES	CONST-3A	60X48	20.00						FINE SIGN	9029400		TEMPORARY TRAFFIC SIGNALS	
WO8-12	48X48	16.00						NO CENTER LINE	CONST-3X	56X12	4.67						SPEEDING/PASSING (PLATE)	9029401		TEMPORARY TRAFFIC SIGNALS AND LIGHTING	
WO8-15	48X48	16.00						GROOVED PAVEMENT													
WO8-15P	30X24	5.00						MOTORCYCLE (PLAQUE)													
WO8-17L	48X48	16.00						SHOULDER DROP-OFF (SYMBOL LEFT)													
WO8-17R	48X48	16.00						SHOULDER DROP-OFF (SYMBOL RIGHT)													
WO8-17P	30X24	5.00						SHOULDER DROP-OFF (PLAQUE)													
WO10-1	42RND.	9.62						RAILROAD CROSSING													
WO12-1	24X24	4.00						DOUBLE DOWN ARROW (SYMBOL)													
WO12-2	48X48	16.00						LOW CLEARANCE (SYMBOL)													
WO12-2x	24X18	3.00						LOW CLEARANCE (PLAQUE)													
WO12-2a	84X24	14.00						OVERHEAD LOW CLEARANCE (FEET AND INCHES)													
WO12-4	120X60	50.00						LOW CLEARANCE XX FT XX IN XX MILES AHEAD													
WO12-5	120X60	50.00						WIDTH RESTRICTION XX FT XX IN XX MILES AHEAD													
WO13-1	30X30	6.25						ADVISORY SPEED (PLAQUE)													
WO16-2	30X24	5.00						XXX FEET (PLAQUE)													
WO16-3	30X24	5.00						X MILE (PLAQUE)													
WO20-1	48X48	16.00	2	32.00			2	ROAD/BRIDGE/RAMP WORK AHEAD													
WO20-2	48X48	16.00						DETOUR AHEAD													
WO20-3	48X48	16.00						ROAD CLOSED AHEAD													
WO20-4	48X48	16.00						ONE LANE ROAD AHEAD													
WO20-5	48X48	16.00						RIGHT/CENTER/LEFT LANE CLOSED AHEAD													
WO20-5a	48X48	16.00						2 RIGHT/CENTER/LEFT LANES CLOSED AHEAD													
WO20-6a	48X48	16.00						RIGHT/CENTER/LEFT LANE CLOSED													
WO20-7a	48X48	16.00						FLAGGER (SYMBOL)													
WO21-2	36X36	9.00						FRESH OIL													
WO21-5	48X48	16.00	2	32.00			20	SHOULDER WORK													
WO22-1	48X48	16.00						BLASTING ZONE AHEAD													
WO22-2	42X36	10.50						TURN OFF 2-WAY RADIO AND PHONE													
WO22-3	42X36	10.50						END BLASTING ZONE													
WO24-1R/L								REVERSE CURVE													
GO22-1	21X15	2.19						WET PAINT (ARROW PIVOTS)													

616-10.05 CONSTRUCTION SIGNS										TOTAL 196			
616-10.10 RELOCATED SIGNS										TOTAL *			
* NO DIRECT PAYMENT WILL BE MADE FOR RELOCATED SIGNS OR TRAFFIC CONTROL DEVICES													

STATE OF MISSOURI  
CALVIN PETRUS  
NUMBER  
PE-2019017873  
THIS SHEET HAS BEEN  
SIGNED, SEALED, AND  
DATED ELECTRONICALLY.  
DATE PREPARED  
10/14/2025  
ROUTE  
77  
STATE  
MO  
DISTRICT  
SE  
SHEET NO.  
3  
COUNTY  
CAPE GIRARDEAU/SCOTT  
JOB NO.  
J9M0283  
CONTRACT ID.  
PROJECT NO.  
BRIDGE NO.

DESCRIPTION

DATE

MISSOURI HIGHWAYS AND TRANSPORTATION  
COMMISSION

105 WEST CAPITOL  
JEFFERSON CITY, MO 65102  
1-888-ASK-MODOT (1-888-275-6636)

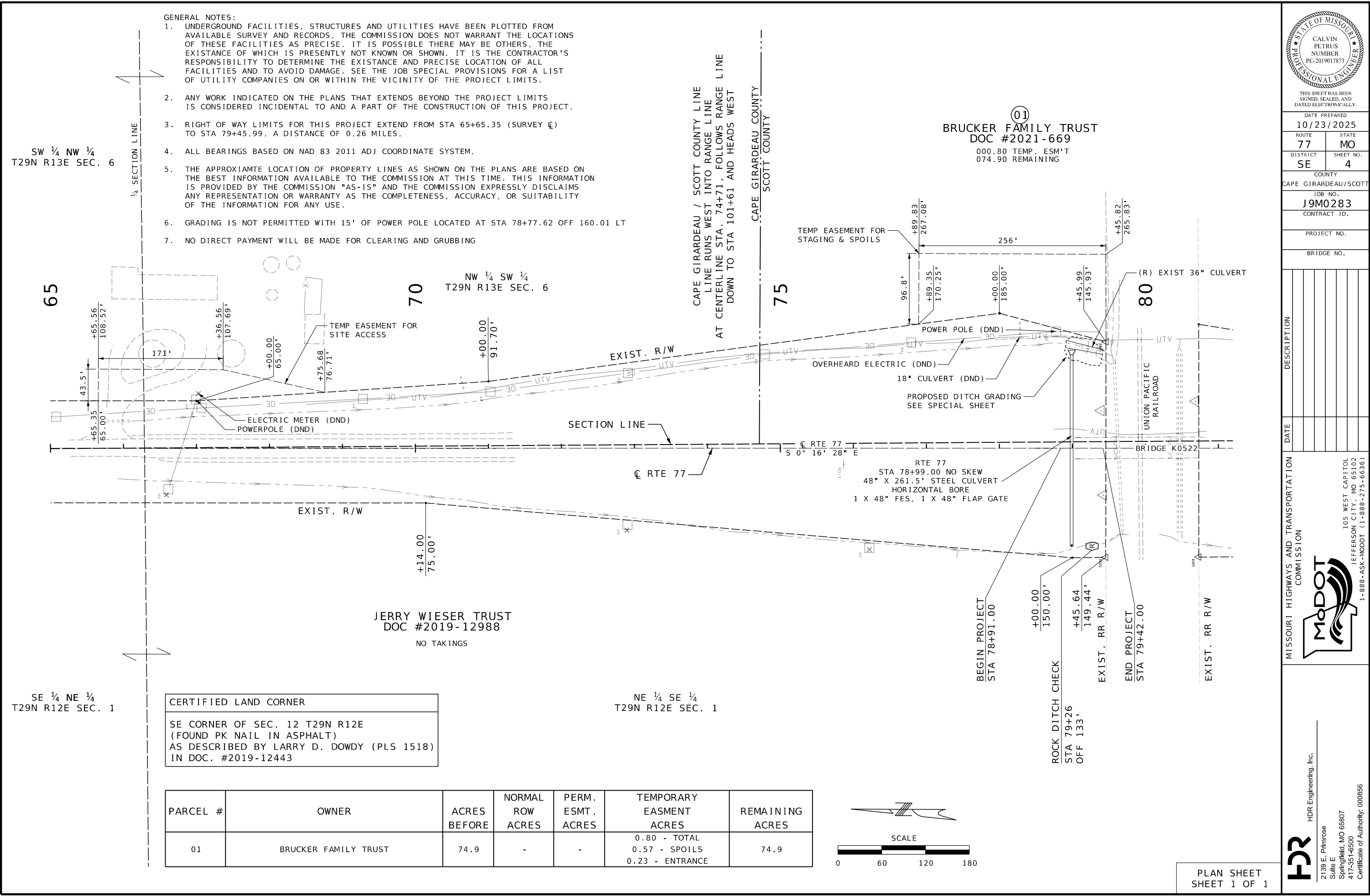
MoDOT

HDR

HDR Engineering, Inc.  
2139 E. Primrose  
Suite E  
Springfield, MO 65807  
417-351-6500  
Certificate of Authority: 000856

SUMMARY OF QUANTITIES  
SHEET 2 OF 2





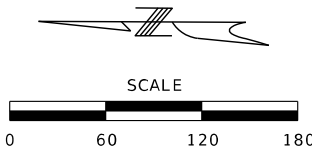
- GENERAL NOTES:
1. UNDERGROUND FACILITIES, STRUCTURES AND UTILITIES HAVE BEEN PLOTTED FROM AVAILABLE SURVEY AND RECORDS. THE COMMISSION DOES NOT WARRANT THE LOCATIONS OF THESE FACILITIES AS PRECISE. IT IS POSSIBLE THERE MAY BE OTHERS, THE EXISTANCE OF WHICH IS PRESENTLY NOT KNOWN OR SHOWN. IT IS THE CONTRACTOR'S RESPONSIBILITY TO DETERMINE THE EXISTANCE AND PRECISE LOCATION OF ALL FACILITIES AND TO AVOID DAMAGE. SEE THE JOB SPECIAL PROVISIONS FOR A LIST OF UTILITY COMPANIES ON OR WITHIN THE VICINITY OF THE PROJECT LIMITS.
  2. ANY WORK INDICATED ON THE PLANS THAT EXTENDS BEYOND THE PROJECT LIMITS IS CONSIDERED INCIDENTAL TO AND A PART OF THE CONSTRUCTION OF THIS PROJECT.
  3. RIGHT OF WAY LIMITS FOR THIS PROJECT EXTEND FROM STA 65+65.35 (SURVEY C) TO STA 79+45.99. A DISTANCE OF 0.26 MILES.
  4. ALL BEARINGS BASED ON NAD 83 2011 ADJ COORDINATE SYSTEM.
  5. THE APPROXIMATE LOCATION OF PROPERTY LINES AS SHOWN ON THE PLANS ARE BASED ON THE BEST INFORMATION AVAILABLE TO THE COMMISSION AT THIS TIME. THIS INFORMATION IS PROVIDED BY THE COMMISSION "AS-IS" AND THE COMMISSION EXPRESSLY DISCLAIMS ANY REPRESENTATION OR WARRANTY AS THE COMPLETENESS, ACCURACY, OR SUITABILITY OF THE INFORMATION FOR ANY USE.
  6. GRADING IS NOT PERMITTED WITH 15' OF POWER POLE LOCATED AT STA 78+77.62 OFF 160.01 LT
  7. NO DIRECT PAYMENT WILL BE MADE FOR CLEARING AND GRUBBING

01  
BRUCKER FAMILY TRUST  
DOC #2021-669  
000.80 TEMP. ESM'T  
074.90 REMAINING

CERTIFIED LAND CORNER

SE CORNER OF SEC. 12 T29N R12E  
(FOUND PK NAIL IN ASPHALT)  
AS DESCRIBED BY LARRY D. DOWDY (PLS 1518)  
IN DOC. #2019-12443

PARCEL #	OWNER	ACRES BEFORE	NORMAL ROW ACRES	PERM. ESMT. ACRES	TEMPORARY EASMENT ACRES	REMAINING ACRES
01	BRUCKER FAMILY TRUST	74.9	-	-	0.80 - TOTAL 0.57 - SPOILS 0.23 - ENTRANCE	74.9



PLAN SHEET  
SHEET 1 OF 1

THIS SHEET HAS BEEN  
SIGNED, SEALED, AND  
DATED ELECTRONICALLY.

DATE PREPARED  
10/23/2025

ROUTE 77	STATE MO
DISTRICT SE	SHEET NO. 4

COUNTY  
CAPE GIRARDEAU/SCOTT

JOB NO.  
J9M0283

CONTRACT ID.

PROJECT NO.

BRIDGE NO.

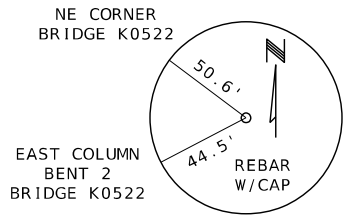
MISSOURI HIGHWAYS AND TRANSPORTATION  
COMMISSION

105 WEST CAPITOL  
JEFFERSON CITY, MO 65102  
1-888-ASK-MODOT (1-888-275-6636)

HDR Engineering, Inc.

2139 E. Primrose  
Suite E  
Springfield, MO 65807  
417-351-6500  
Certificate of Authority: 000856



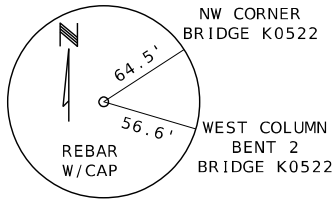


REFERENCE TIE

CP-100  
N 500356.680  
E 1062726.708  
EL 346.472

SET 5/8" REBAR WITH PLASTIC CONTROL POINT  
CAP 0.4' DEEP IN NORTHEAST QUAD OF RTE. 77  
K0522 & UNION PACIFIC RAILROAD

STA 79+39.22, 51.75' LT, RTE 77

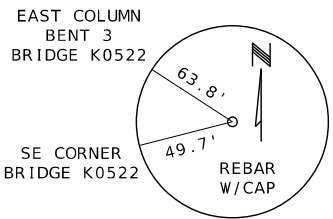


REFERENCE TIE

CP-101  
N 500352.800  
E 1062610.775  
EL 342.509

SET 5/8" REBAR WITH PLASTIC CONTROL POINT  
CAP 0.4' DEEP IN NORTHWEST QUAD OF RTE. 77  
K0522 & UNION PACIFIC RAILROAD

STA 79+42.55, 64.20' RT, RTE 77

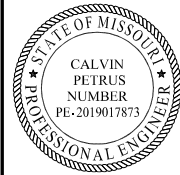


REFERENCE TIE

CP-102  
N 500227.252  
E 1062740.025  
EL 348.438

SET 5/8" REBAR WITH PLASTIC CONTROL POINT  
CAP 0.3' DEEP IN SOUTHEAST QUAD OF RTE. 77  
K0522 & UNION PACIFIC RAILROAD

STA 80+68.71, 64.44' LT, RTE 77



THIS SHEET HAS BEEN  
SIGNED, SEALED, AND  
DATED ELECTRONICALLY.

DATE PREPARED  
10/14/2025

ROUTE 77 STATE MO

DISTRICT SE SHEET NO. 5

COUNTY  
CAPE GIRARDEAU/SCOTT

JOB NO.  
J9M0283

CONTRACT ID.

PROJECT NO.

BRIDGE NO.

DESCRIPTION	DATE

MISSOURI HIGHWAYS AND TRANSPORTATION  
COMMISSION

105 WEST CAPITOL  
JEFFERSON CITY, MO 65102  
1-888-ASK-MODOT (1-888-275-6636)

HDR Engineering, Inc.  
2139 E. Primrose  
Suite E  
Springfield, MO 65807  
417-351-6500  
Certificate of Authority: 000856



		COORDINATE POINT LISTING						
SHEET NO	STATION	LOCATION	OFFSET (USFT)	MODIFIED STATE PLANE (GROUND)			DESCRIPTION	GPK POINT ID
				NORTHING (US SURVEY FT)	EASTING (US SURVEY FT)	ELEVATION (US SURVEY FT)		
PROJECT CONTROL POINTS								
4	79+39.22	LT	51.7462	500,356.680	1,062,726.708	346.472	Set 5/8" Rebar with Plastic Control Point Cap 0.4' Deep in Northeast Quad of Rte. 77 Bridge K0522 & Union Pacific Railroad	CP-100
4	79+42.54	RT	64.2041	500,352.800	1,062,610.775	342.509	Set 5/8" Rebar with Plastic Control Point Cap 0.4' Deep in Northwest Quad of Rte. 77 Bridge K0522 & Union Pacific Railroad	CP-101
4	80+68.71	LT	64.4432	500,227.252	1,062,740.025	348.438	Set 5/8" Rebar with Plastic Control Point Cap 0.3' Deep in Southeast Quad of Rte. 77 Bridge K0522 & Union Pacific Railroad.	CP-102
ALIGNMENTS								
RTE 77								
4	62+02.00	MO 77	0.00	502,093.63	1,062,666.64	333.30	BEGINNING OF CHAIN	
4	91+08.83	MO 77	0.00	499,186.83	106.2680.563	357.28	END OF CHAIN	

ALL PROJECT COORDINATES HAVE BEEN PROJECTED FROM THE MISSOURI STATE PLANE COORDINATE (SPC) SYSTEM OF 1983 USING AN AVERAGE PROJECT PROJECTION (GRID TO GROUND) FACTOR. TO GET BACK TO STATE PLANE COORDINATES, MULTIPLY THE PROJECT COORDINATES BY THE AVERAGE GRID FACTOR AS SHOWN IN THE "REFERENCE CONTROL INFORMATION" PORTION OF THIS TABLE.

PROJECT COORDINATE INFORMATION

COORDINATE SYSTEM	MO SPC
HORIZONTAL DATUM	NAD83 (2011)
VERTICAL DATUM	NAVD88
GEOID MODEL	2018
ELEVATIONS DETERMINED BY	GPS
PROJECT PROJECTION FACTOR	1.00000000

REFERENCE CONTROL INFORMATION

COORDINATE SYSTEM	MO SPC
CONTROL STATION	MOJK
DESIGNATION	MODOT JACKSON CORS ARP
CORS_ID	MOJK
PID	DL6890
LATITUDE	372444.4583
LONGITUDE	893900.2211
NORTHING (M)	175551.7670
EASTING (M)	325239.6710
ZONE	EAST
PROJECT AVERAGE GRID FACTOR	1.00000000

LINEAR UNIT CONVERSION

1 METER = 3.280833333 US SURVEY FEET (USFT)



THIS SHEET HAS BEEN  
SIGNED, SEALED, AND  
DATED ELECTRONICALLY.

DATE PREPARED 10/14/2025	
ROUTE 77	STATE MO
DISTRICT SE	SHEET NO. 6

COUNTY CAPE GIRARDEAU/SCOTT
JOB NO. J9M0283
CONTRACT ID.


PROJECT NO.
BRIDGE NO.

DESCRIPTION	DATE

MISSOURI HIGHWAYS AND TRANSPORTATION  
COMMISSION

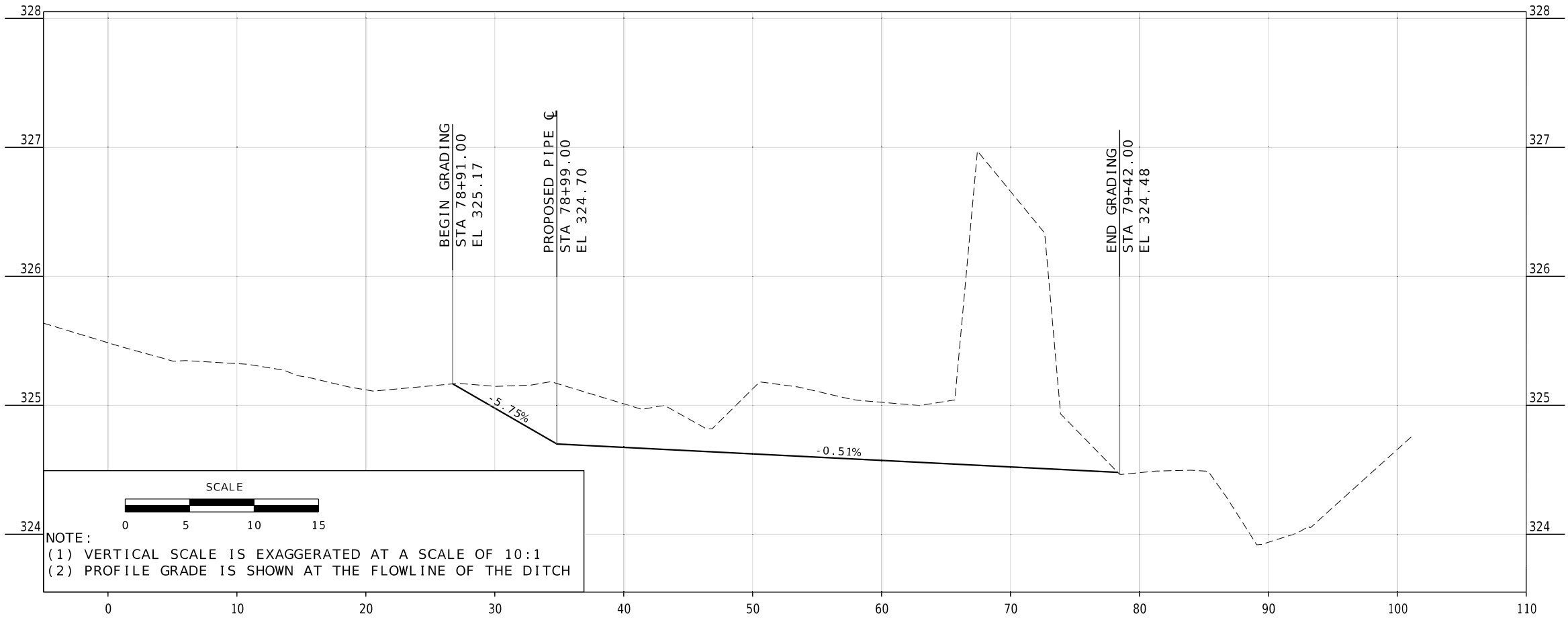
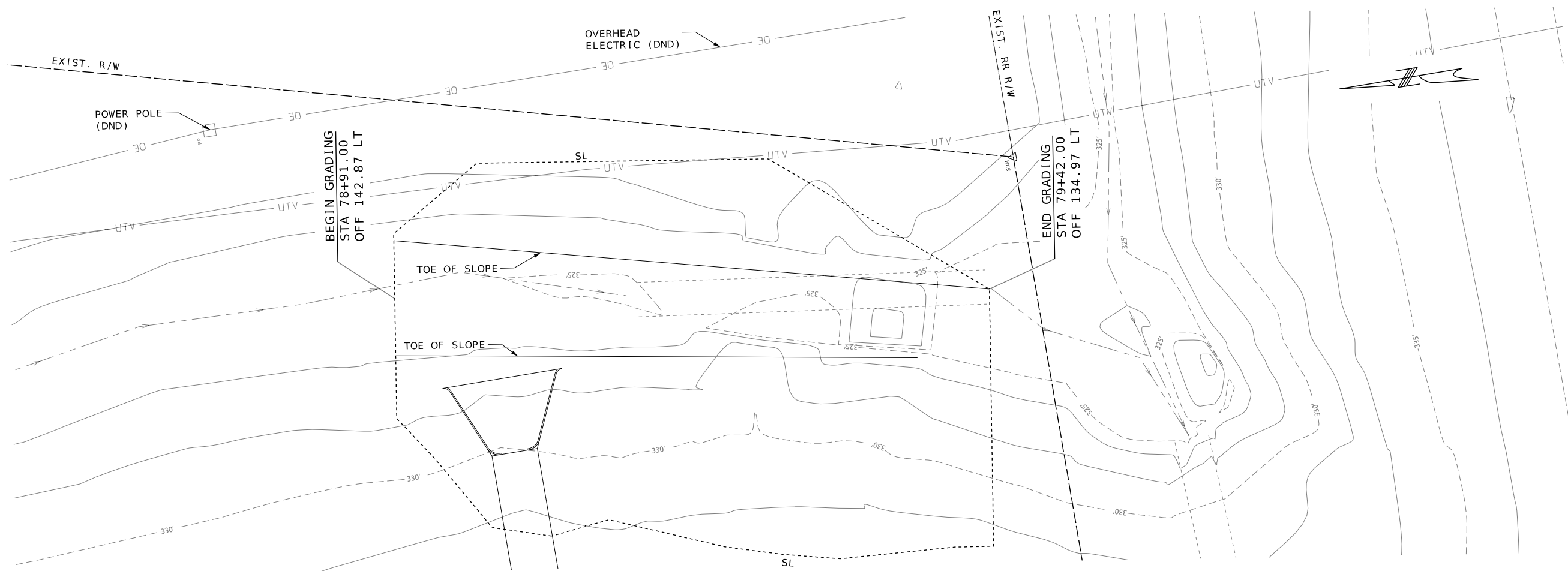


105 WEST CAPITOL  
JEFFERSON CITY, MO 65102  
1-888-ASK-MODOT (1-888-275-6636)



HDR Engineering, Inc.  
2139 E. Primrose  
Suite E  
Springfield, MO 65807  
417-351-6500  
Certificate of Authority: 000856





THIS SHEET HAS BEEN  
SIGNED, SEALED, AND  
DATED ELECTRONICALLY.

DATE PREPARED  
**10/14/2025**

ROUTE **77** STATE **MO**

DISTRICT **SE** SHEET NO. **7**

COUNTY  
CAPE GIRARDEAU/SCOTT

JOB NO.  
**J9M0283**

CONTRACT ID.

PROJECT NO.

BRIDGE NO.

DATE	DESCRIPTION

MISSOURI HIGHWAYS AND TRANSPORTATION  
COMMISSION

105 WEST CAPITOL  
JEFFERSON CITY, MO 65102  
1-888-ASK-MODOT (1-888-275-6636)

**HDR** HDR Engineering, Inc.

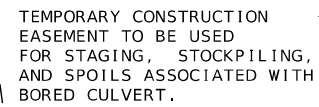
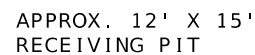
2139 E. Primrose  
Suite E  
Springfield, MO 65807  
417-351-6500  
Certificate of Authority: 000856

SPECIAL SHEET  
1 OF 2

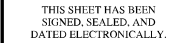


BORING DATA IS PROVIDED FOR INFORMATIONAL PURPOSES ONLY. SEE THE ELECTRONIC DELIVERABLE FOR THE COMPLETE BORING DATA.

BORING B4 WAS PROVIDED WITH THE AS-BUILT  
BRIDGE K0522 PLANS (1966). SEE PDF PAGE 1  
FOR THE PLAN VIEW LOCATION OF THE BORE AND  
PDF PAGE 2 FOR BORING LOG.



SPECIAL SHEET  
2 OF 2



ROUTE	STATE
77	MO

COUNTY  
CAPE GIRARDEAU/SCOT

PROJECT NO.
-------------

BRIDGE NO.

[illegible]MISSOURI HIGHWAYS AND TRANSPORTATION  
COMMISSION


105 WEST CAPITOL  
JEFFERSON CITY, MO 65102  
1-888-ASK-MODOT (1-888-275-6636)



HDR Engineering, Inc.

2139 E. Primrose  
Suite E  
Springfield, MO 65807  
417-351-6500  
Certificate of Authority: 000856





CALVIN  
PETRUS  
NUMBER  
PE.2019017873

THIS SHEET HAS BEEN  
SIGNED, SEALED, AND  
DATED ELECTRONICALLY.

ROUTE 77	STATE MO
DISTRICT SE	SHEET NO. 9

JOB NO.  
J9M0283  
CONTRACT ID.

BRIDGE NO.

--	--	--	--	--	--	--	--

[illegible][illegible]

NOI							
-----	--	--	--	--	--	--	--

SCRIPT						
--------	--	--	--	--	--	--

[illegible][illegible][illegible]

3							
---	--	--	--	--	--	--	--

DATE						
------	--	--	--	--	--	--

ON  
COL 02  
36)

CAPITOL HILL  
D 651  
5-663

88-279

ANSI  
05 W/  
CITY  
1-88

1 PERSON NOT (


AND  
ISS  
F  
IEFFEE  
K-MOD

WAYS COMM

1-888



SOURCE



--	--

\_\_\_\_\_

\_\_\_\_\_

\_\_\_\_\_

63

ing, Inc.

356

7

HE	se	0 6580	authorit
----	----	--------	----------

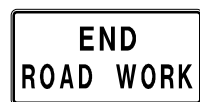
2

39 E. I  
ite E  
ringfie  
7-351-  
ertificat

<b>F</b>	21 Su Sp 41 Ce
----------	----------------

:10 AM 10/14/2025

1. ANY EXISTING SIGNS THAT CONFLICT WITH THE TRAFFIC CONTROL SIGNING SHALL BE COMPLETELY COVERED OR REMOVED.
2. TEMPORARY SIGNING SHOWN IS FOR WORK ON ONE SIDE OF THE ROAD. FOR WORK ON THE OTHER SIDE, REVERSE ORDER OF THE SIGNS AND CHANNELIZERS.
3. SIGNING SHOWN SHALL REMAIN IN PLACE UNTIL CONSTRUCTION IS COMPLETE.
4. ALTERNATE TRAFFIC CONTROL MAY BE USED AS NEEDED AT THE APPROVAL OF THE ENGINEER.
5. REFER TO STANDARD DRAWING 616.10, 619.10, AND 620.10 FOR ADDITIONAL DETAILS AND 903.03 FOR SIGN AND SIGN MOUNTING REQUIREMENTS.
6. SPEED LIMIT SIGNS INDICATING THE NORMAL SPEED LIMIT SHALL BE INSTALLED AT THE END OF THE WORK ZONE, PROVIDED NO FURTHER WORK ZONES WILL BE ENCOUNTERED WITHIN THE NEXT 1/2 MILE.
7. TEMPORARY SPEED LIMIT SIGNS SHALL BE COVERED OR REMOVED WHEN THE CONDITIONS REQUIRING REDUCED SPEEDS DO NOT EXIST.
8. NO DIRECT PAYMENT WILL BE MADE FOR THE RELOCATION OF CHANNELIZERS, CONSTRUCTION SIGNS, OR FLASHING ARROW PANEL.
9. THE CONTRACTOR SHALL BE RESPONSIBLE FOR IMPLEMENTING AND MAINTAINING PROPER TRAFFIC CONTROL SETUPS THROUGHOUT CONSTRUCTION AS DESCRIBED IN THESE PLANS OR AS APPROVED BY THE ENGINEER.
10. THE CONTRACTOR SHALL MAINTAIN PUBLIC ACCESS TO ALL BUSINESSES AND STREETS. NO STREET OR ENTRANCE SHALL BE COMPLETELY BLOCKED.
11. SPACING & DISTANCES OF TRAFFIC CONTROL DEVICES ARE APPROXIMATE. THE EXACT LOCATIONS SHALL BE DETERMINED IN THE FIELD & APPROVED BY THE ENGINEER.
12. TRAFFIC CONTROL SHALL CONFORM TO THE LATEST EDITION OF THE MANUAL ON UNIFORM TRAFFIC CONTROL DEVICES (MUTCD).
13. WHEN TRUCKS AND EQUIPMENT ARE BEING UNLOADED ON THE SHOULDER USE TYPICAL APPLICATION FOR SHOULDER WORK AS SHOWN ON TRAFFIC CONTROL SHEET 2 OF 2.



4



2

# TRAFFIC CONTROL SHEET 1 OF 2

009\_TC\_01\_I9M0283.dgn 11:00:10 AM 10/14/2025



NOTES:

(1) TRAFFIC CONTROL IS INTENDED FOR ACCESS ALONG THE EAST SIDE OF RTE 77, IF NEEDED.

TRAFFIC CONTROL LEGEND

- SIGN (SINGLE SIDED)
- CHANNELIZER
- TMA (TRUCK MOUNTED ATTENUATOR) WITH FLASHING ARROW PANEL

SPACING OF CHANNELIZING DEVICES		
SPEED MPH	MAXIMUM CHANNELIZER SPACING	
	TAPER	BUFFER / WORK AREA
50-55	50	80



WO20-1

(2)



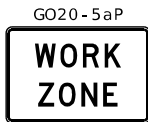
WO21-5

(20)



WO5-1

(43)



R2-1

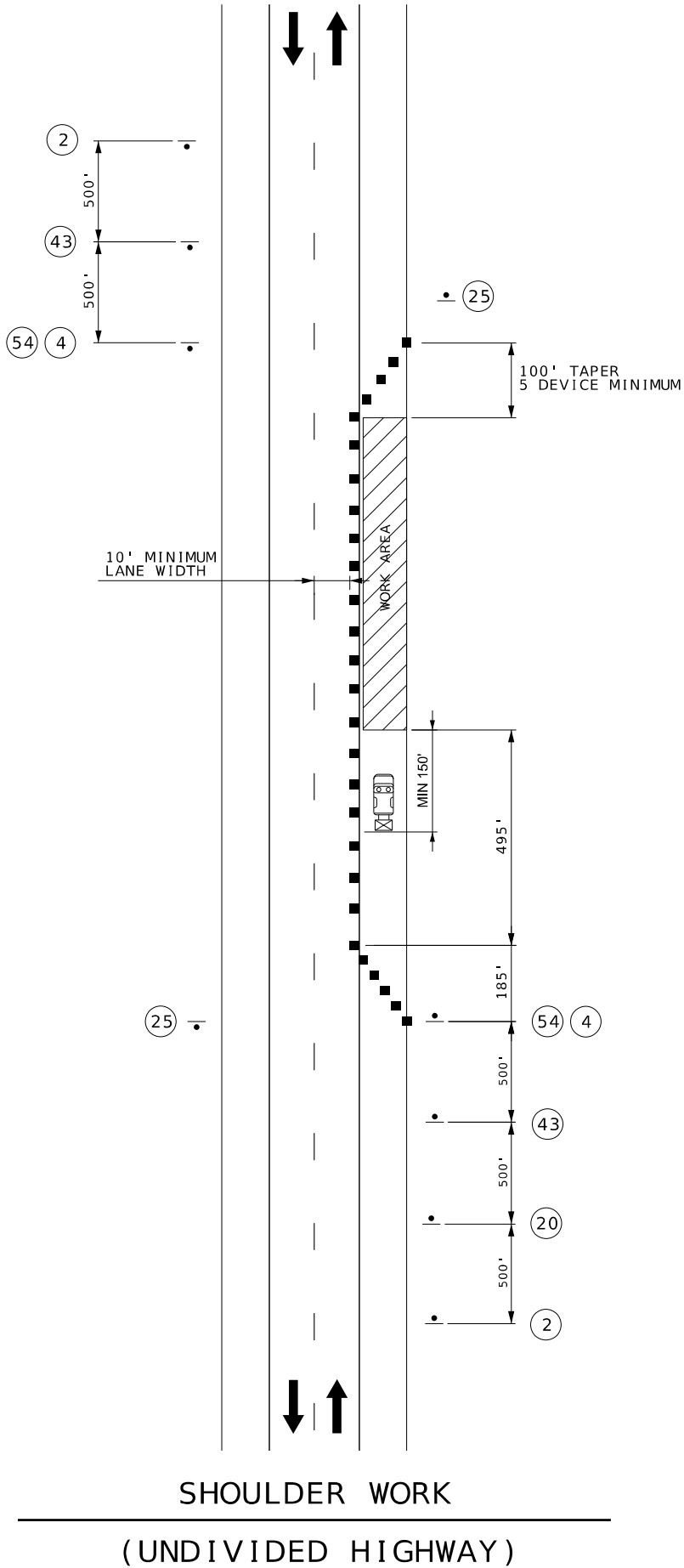
(4)

(54)



R2-1

(25)



NOT TO SCALE

TRAFFIC CONTROL  
SHEET 2 OF 2



THIS SHEET HAS BEEN  
SIGNED, SEALED, AND  
DATED ELECTRONICALLY.

DATE PREPARED  
10/14/2025

ROUTE 77 STATE MO

DISTRICT SE SHEET NO. 10

COUNTY  
CAPE GIRARDEAU/SCOTT

JOB NO.  
J9M0283

CONTRACT ID.

PROJECT NO.

BRIDGE NO.

DESCRIPTION	DATE

MISSOURI HIGHWAYS AND TRANSPORTATION  
COMMISSION

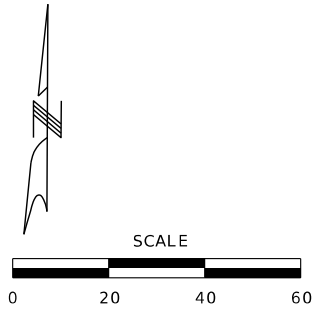
MoDOT

105 WEST CAPITOL  
JEFFERSON CITY, MO 65102  
1-888-ASK-MODOT (1-888-275-6636)

HDR Engineering, Inc.

2139 E. Primrose  
Suite E  
Springfield, MO 65807  
417-351-6500  
Certificate of Authority: 000856





THIS SHEET HAS BEEN  
SIGNED, SEALED, AND  
DATED ELECTRONICALLY.

DATE PREPARED  
10/22/2025

ROUTE 77 STATE MO

DISTRICT SE SHEET NO. 11

COUNTY  
CAPE GIRARDEAU/SCOTT

JOB NO.  
J9M0283

CONTRACT ID.

PROJECT NO.

BRIDGE NO.

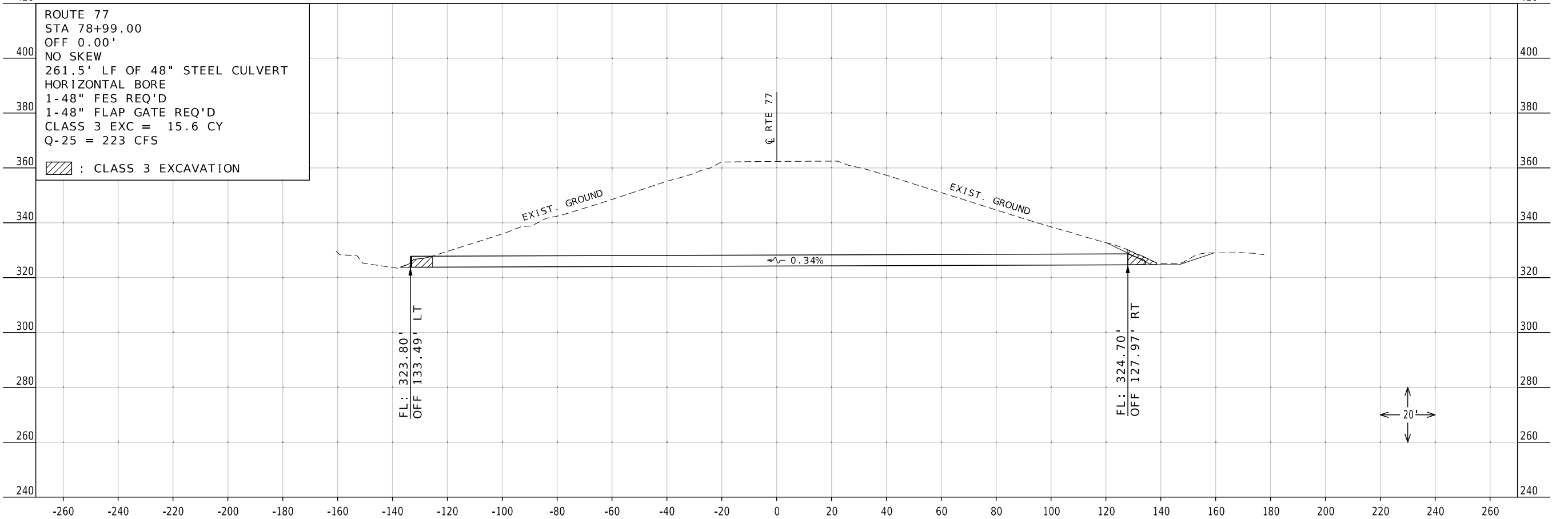
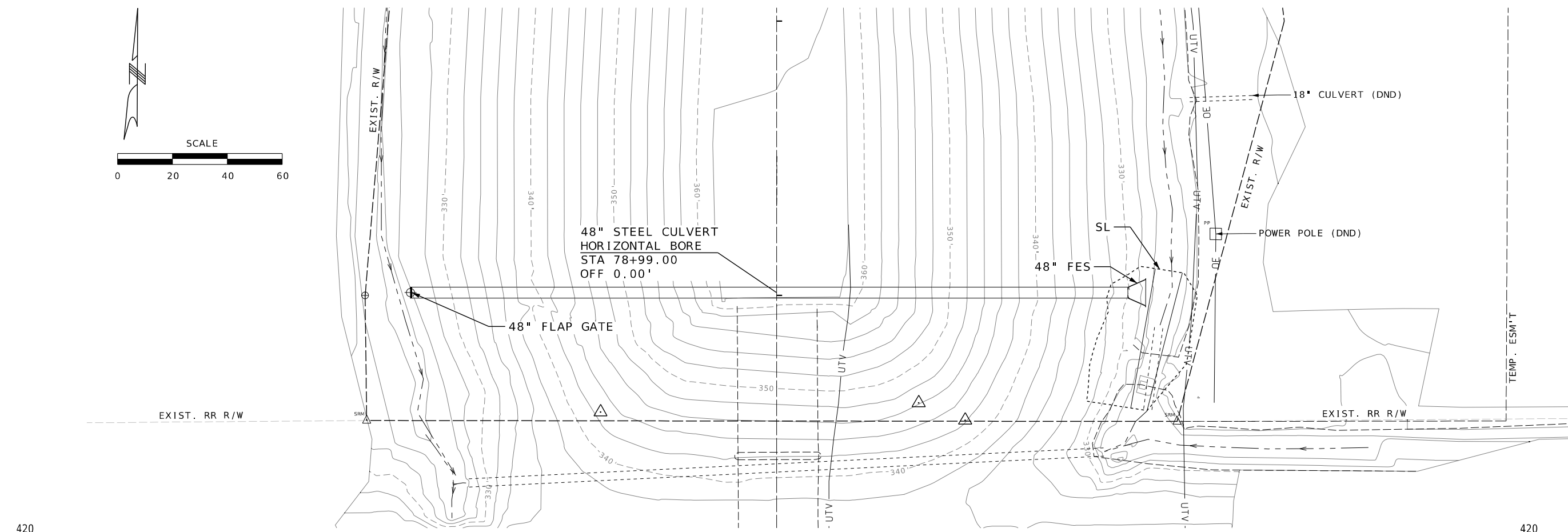
DATE	DESCRIPTION

MISSOURI HIGHWAYS AND TRANSPORTATION  
COMMISSION

105 WEST CAPITOL  
JEFFERSON CITY, MO 65102  
1-888-ASK-MODOT (1-888-275-6636)

HDR Engineering, Inc.

2139 E. Primrose  
Suite E  
Springfield, MO 65807  
417-351-6500  
Certificate of Authority: 000856



ROUTE 77  
STA 78+99.00  
OFF 0.00'  
NO SKEW  
261.5' LF OF 48" STEEL CULVERT  
HORIZONTAL BORE  
1-48" FES REQ'D  
1-48" FLAP GATE REQ'D  
CLASS 3 EXC = 15.6 CY  
Q-25 = 223 CFS

: CLASS 3 EXCAVATION

CULVERT SECTION  
SHEET 1 OF 1