



DATE PREPARED

9/12/2025

ROUTE STATE

AA MO

DISTRICT SHEET NO.

CD 1

COUNTY

COLE

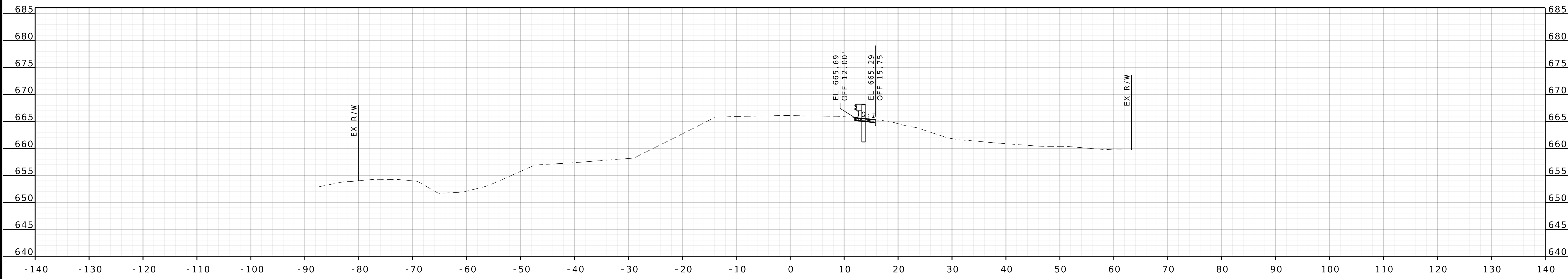
JOB NO.

J553551

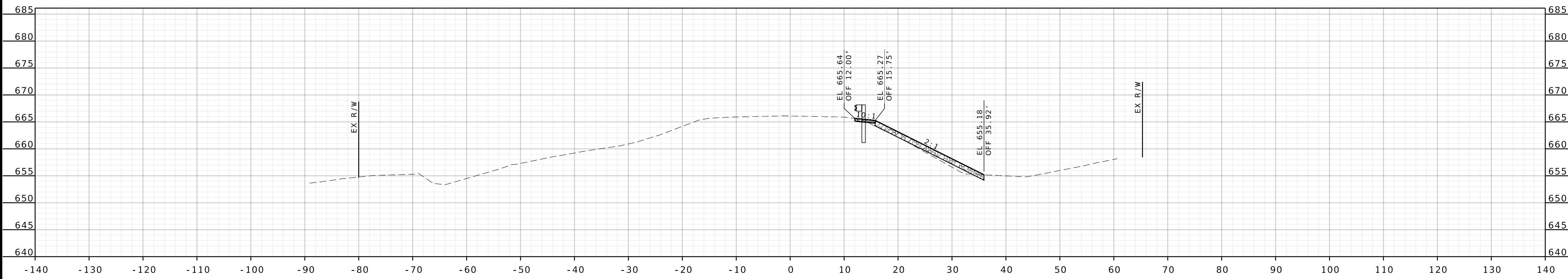
CONTRACT ID.

PROJECT NO.

BRIDGE NO.



STA 234+28.66



STA 234+50.00

| DESCRIPTION | DATE |
|-------------|------|
| | |
| | |
| | |
| | |

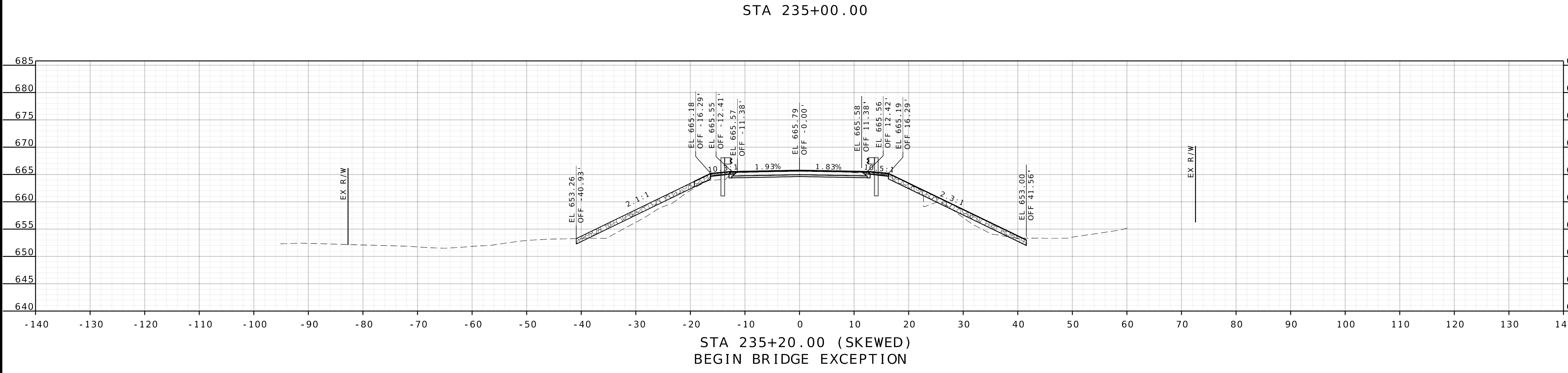
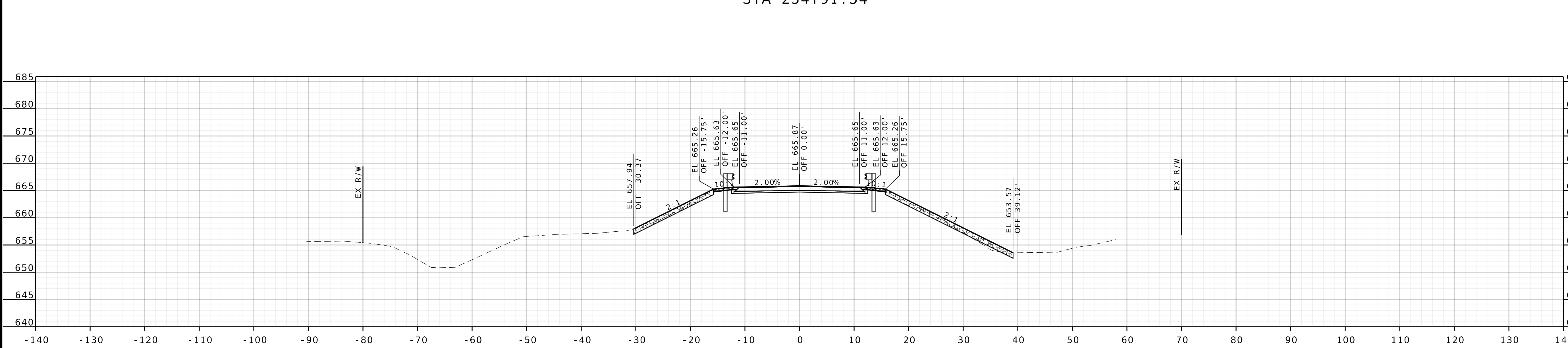
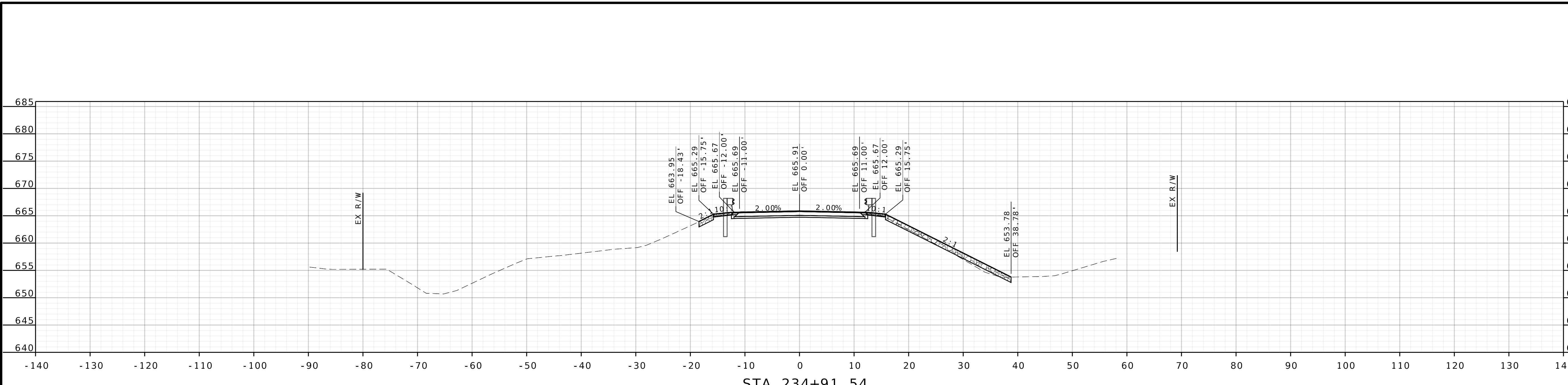
MISSOURI HIGHWAYS AND TRANSPORTATION COMMISSION

105 WEST CAPITOL
JEFFERSON CITY, MO 65102
1-888-ASK-MODOT (1-888-275-6636)

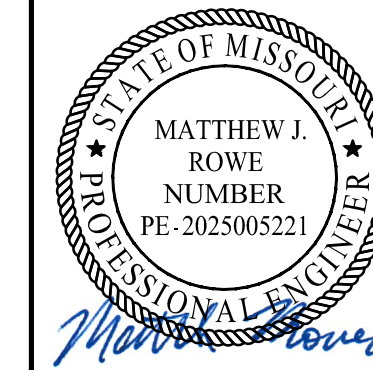
HORNOR SHIFRIN

407 S. 18TH ST., STE. 400 ST. LOUIS, MO 63103
314-531-4321 - FAX 314-531-4896
WWW.HORNORSHIFRIN.COM
DISCIPLINE: PROFESSIONAL ENGINEERING
CERTIFICATE OF AUTHORITY: 000739
EXPIRATION DATE: DECEMBER 31, 2026

CROSS SECTIONS
SHEET 1 OF 4
ROUTE AA
OVER SOUTH
MOREAU CREEK



| | | |
|--|---|-----------|
| | DATE PREPARED | 9/12/2025 |
| | ROUTE | AA |
| | STATE | MO |
| | DISTRICT | CD |
| | SHEET NO. | 2 |
| | COUNTY | COLE |
| | JOB NO. | J5S3551 |
| | CONTRACT ID. | |
| | PROJECT NO. | |
| | BRIDGE NO. | |
| DESCRIPTION | | |
| DATE | | |
| MISOURI HIGHWAYS AND TRANSPORTATION COMMISSION | | |
| 105 WEST CAPITOL JEFFERSON CITY, MO 65102 1-888-ASK-MODOT (1-888-275-6636) | | |
| HORNER SHIFRIN | <small>407 S. 18TH ST., STE. 400 ST. LOUIS, MO 63103 314-531-4321 - FAX 314-531-4966 WWW.HORNERSHIFRIN.COM DISCIPLINE: PROFESSIONAL ENGINEERING CERTIFICATE OF AUTHORITY: 800799 EXPIRATION DATE: DECEMBER 31, 2026</small> | |
| CROSS SECTIONS SHEET 2 OF 4 | ROUTE AA OVER SOUTH MOREAU CREEK | |



DATE PREPARED
9/12/2025

ROUTE STATE
AA MO

DISTRICT SHEET NO.
CD 3

COUNTY
COLE

JOB NO.
J5S3551

CONTRACT ID.

PROJECT NO.

BRIDGE NO.

DESCRIPTION

DATE

MISSOURI HIGHWAYS AND TRANSPORTATION
COMMISSION

105 WEST CAPITOL
JEFFERSON CITY, MO 65102
1-888-ASK-MODOT (1-888-275-6636)

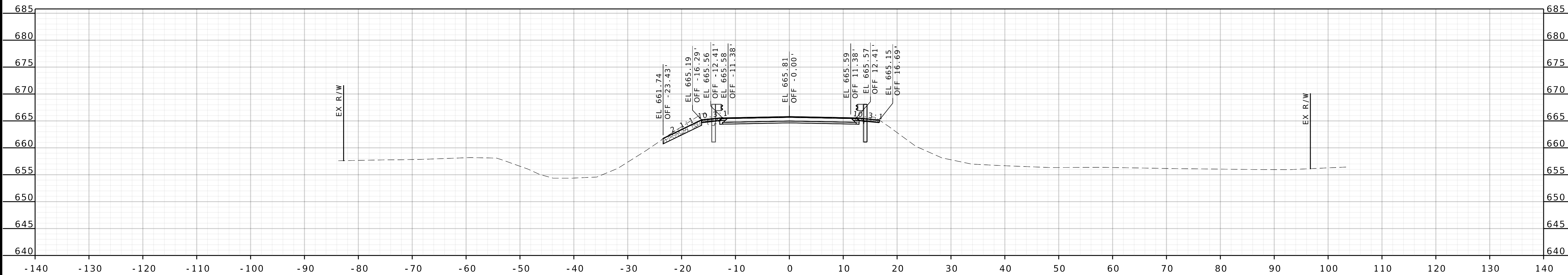
MoDOT

407 S. 18TH ST., STE. 400 ST. LOUIS, MO 63103
314-531-4321 - FAX 314-531-4966
WWW.MODOT.MO
DISCIPLINE: PROFESSIONAL ENGINEERING
CERTIFICATE OF AUTHORITY: 000739
EXPIRATION DATE: DECEMBER 31, 2026

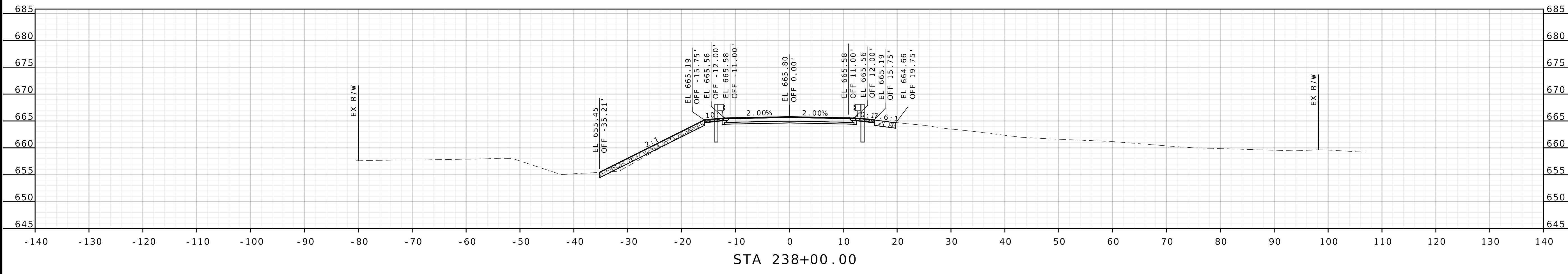
HORNER
SHIFRIN

CROSS SECTIONS
SHEET 3 OF 4

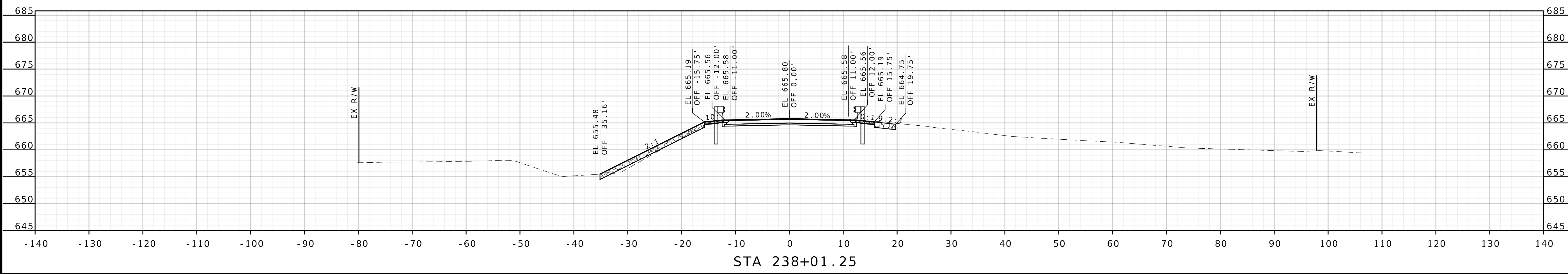
ROUTE AA
OVER SOUTH
MOREAU CREEK



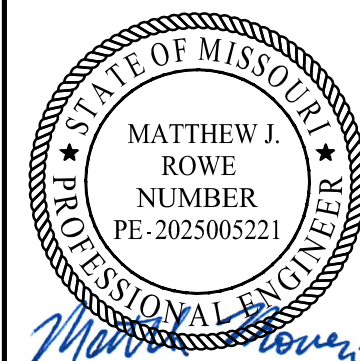
STA 237+73.52 (SKEWED)
END BRIDGE EXCEPTION



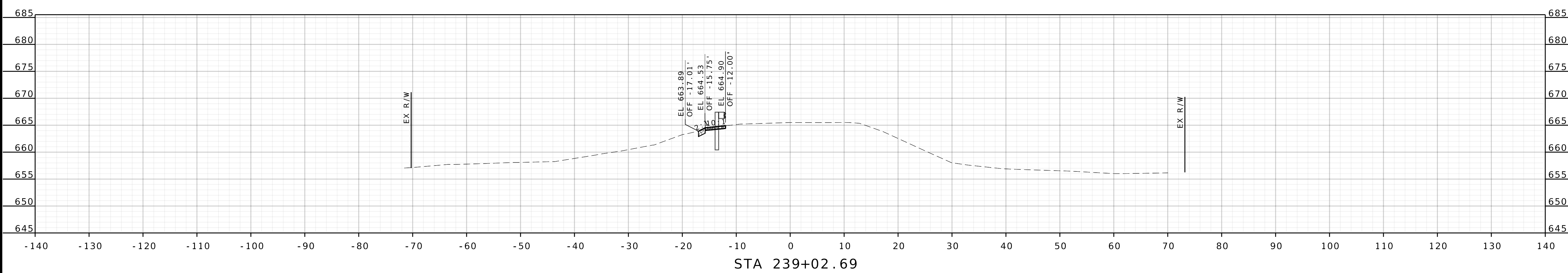
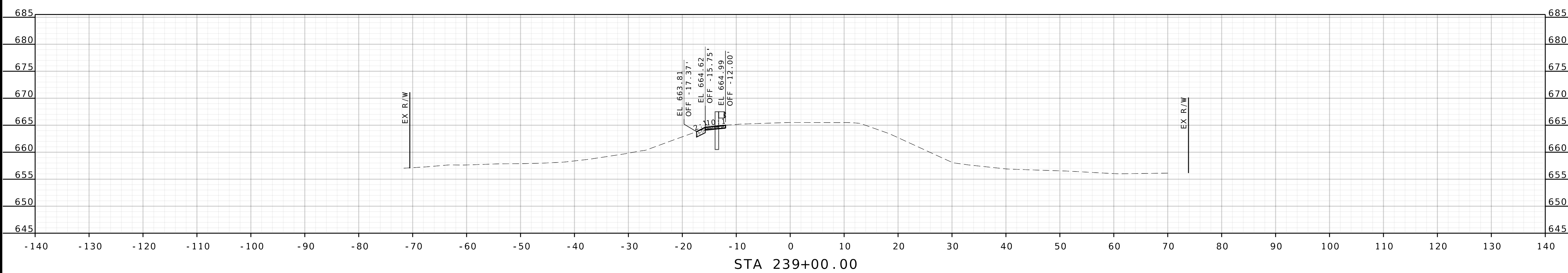
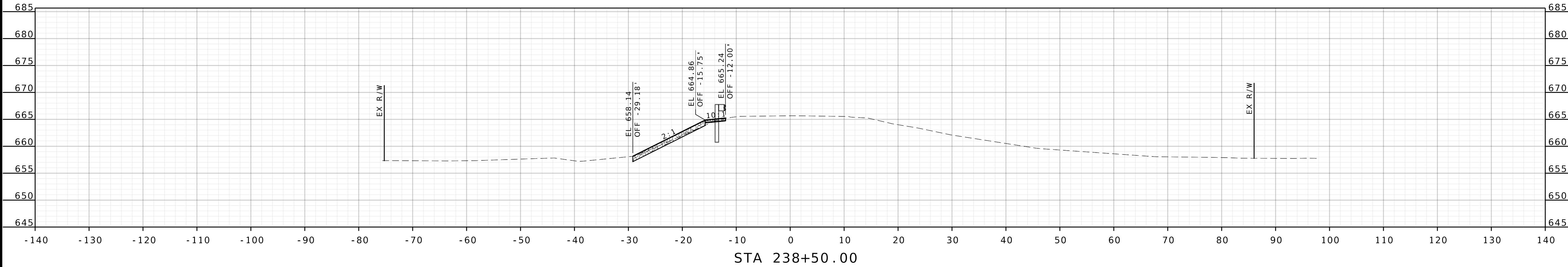
STA 238+00.00



STA 238+01.25

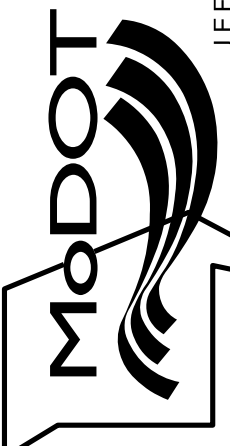


| | |
|----------------------------|----------------|
| DATE PREPARED 9/12/2025 | |
| ROUTE AA | STATE MO |
| DISTRICT CD | SHEET NO. 4 |
| COUNTY COLE | |
| JOB NO. J553551 | |
| CONTRACT ID. | |
| PROJECT NO. | |
| BRIDGE NO. | |



| DESCRIPTION | DATE |
|-------------|------|
| | |
| | |
| | |
| | |
| | |
| | |

MISSOURI HIGHWAYS AND TRANSPORTATION COMMISSION



105 WEST CAPITOL
JEFFERSON CITY, MO 65102
1-888-ASK-MODOT (1-888-275-6636)

HORNER SHIFRIN

401 S. 18TH ST., STE. 400 ST. LOUIS, MO 63103
314-531-4321 • FAX 314-531-4866
WWW.HORNERSHIFRIN.COM
DISCIPLINE: PROFESSIONAL ENGINEERING
CERTIFICATE OF AUTHORITY: 000759
EXPIRATION DATE: DECEMBER 31, 2026

CROSS SECTIONS
SHEET 4 OF 4

ROUTE AA
OVER SOUTH
MOREAU CREEK