

FUNCTIONAL CLASSIFICATION- INTERSTATE

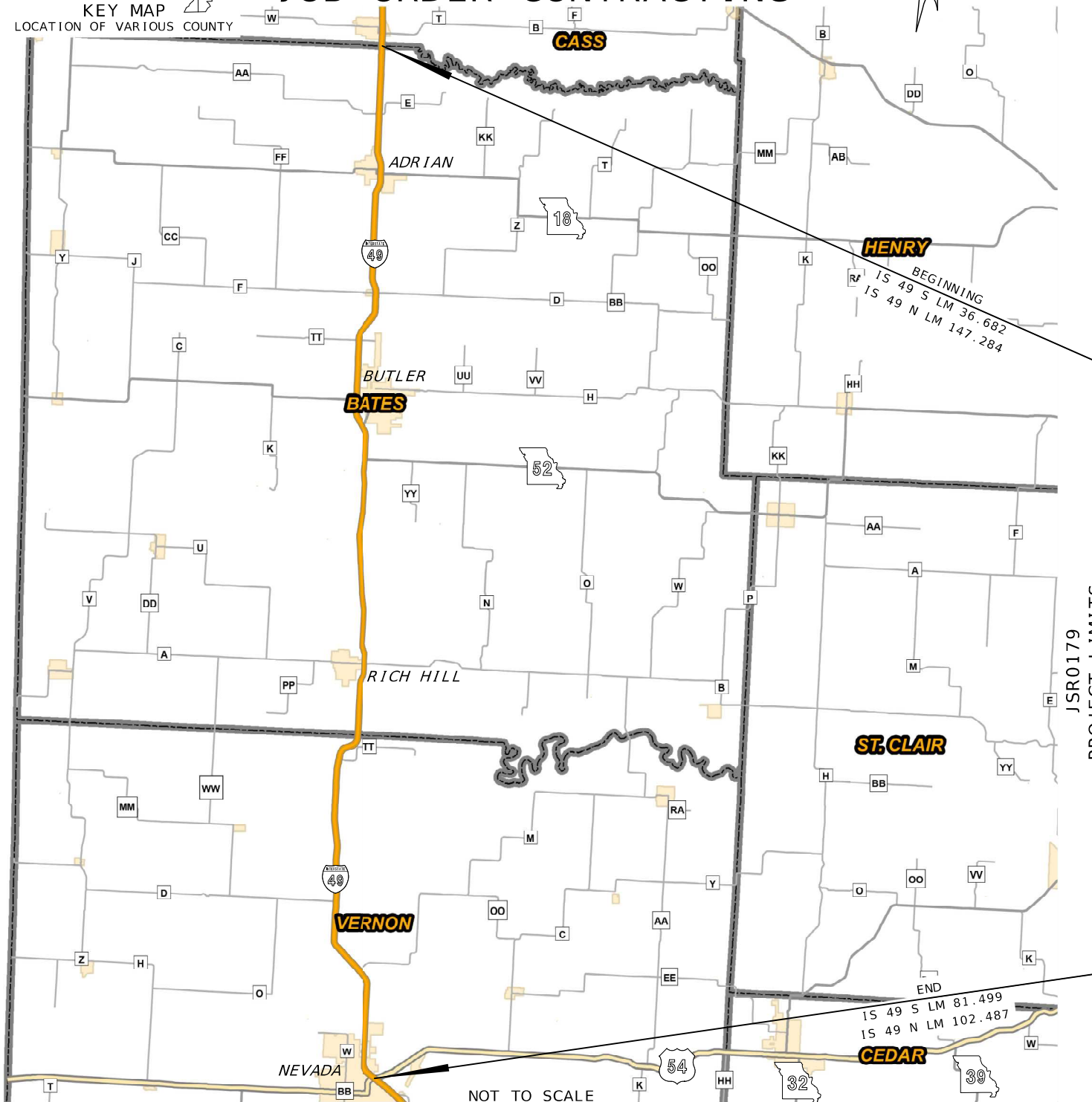
NO NEW R/W REQUIRED

NOTE: DASHED OR OPEN SYMBOLS INDICATE  
EXISTING FEATURES

EXISTING	NEW

KEY MAP  
LOCATION OF VARIOUS COUNT

KEY MAP   
LOCATION OF VARIOUS COUNTY




THE EXISTENCE AND APPROXIMATE LOCATION OF UTILITY FACILITIES KNOWN TO EXIST, AS SHOWN ON THE PLANS, ARE BASED ON THE BEST INFORMATION AVAILABLE TO THE COMMISSION AT THIS TIME. THIS INFORMATION IS PROVIDED BY THE COMMISSION "AS-IS" AND THE COMMISSION EXPRESSLY DISCLAIMS ANY REPRESENTATION OR WARRANTY AS TO THE COMPLETENESS, ACCURACY, OR SUITABILITY OF THE INFORMATION FOR ANY USE. RELIANCE UPON THIS INFORMATION IS DONE AT THE RISK AND PERIL OF THE USER, AND THE COMMISSION SHALL NOT BE LIABLE FOR ANY DAMAGES THAT MAY ARISE FROM ANY ERROR IN THE INFORMATION. IT IS, THEREFORE, THE RESPONSIBILITY OF THE CONTRACTOR TO VERIFY THE EXISTENCE, LOCATION AND STATUS OF ANY FACILITY. SUCH VERIFICATION INCLUDES DIRECT CONTACT WITH THE LISTED UTILITIES.

## INDEX OF SHEETS

DESCRIPTION	SHEET NUMBER
TITLE SHEET .....	1
TRAFFIC CONTROL SHEETS (TC).....	2-11



DATE PREPARED	
10/24/2025	
ROUTE	STATE
I 49	MO
DISTRICT	SHEET NO.
SW	1
COUNTY	
BATES / VERNON	
JOB NO.	
JSR0179	
CONTRACT ID.	
PROJECT NO.	
BRIDGE NO.	

[illegible]

MISSOURI HIGHWAYS AND TRANSPORTATION  
COMMISSION

105 WEST CAPITOL  
JEFFERSON CITY, MO 65102  
1-888-ASK-MODOT (1-888-275-6636)

LENGTH OF PROJECT

IS 49 S	
BEGINNING OF PROJECT	LM 36.682
END OF PROJECT	LM 81.499
APPARENT LENGTH	236,633.8 FEET

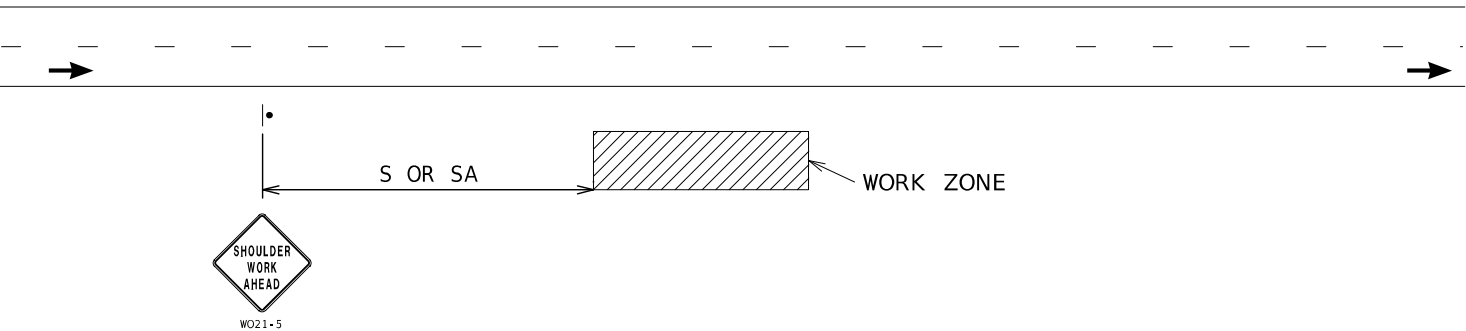
IS 49 N	
BEGINNING OF PROJECT	LM 102.487
END OF PROJECT	LM 147.284
APPARENT LENGTH	236,528.2 FEET

EQUATIONS AND EXCEPTIONS:	N/A
---------------------------	-----

TOTAL CORRECTIONS	0.00	FEET
NET LENGTH OF PROJECT	473,162	FEET
STATE LENGTH	89.614	MILES

FOR INFORMATION ONLY			
ESTIMATED DISTURBED ACRES	N/A	ACRES	

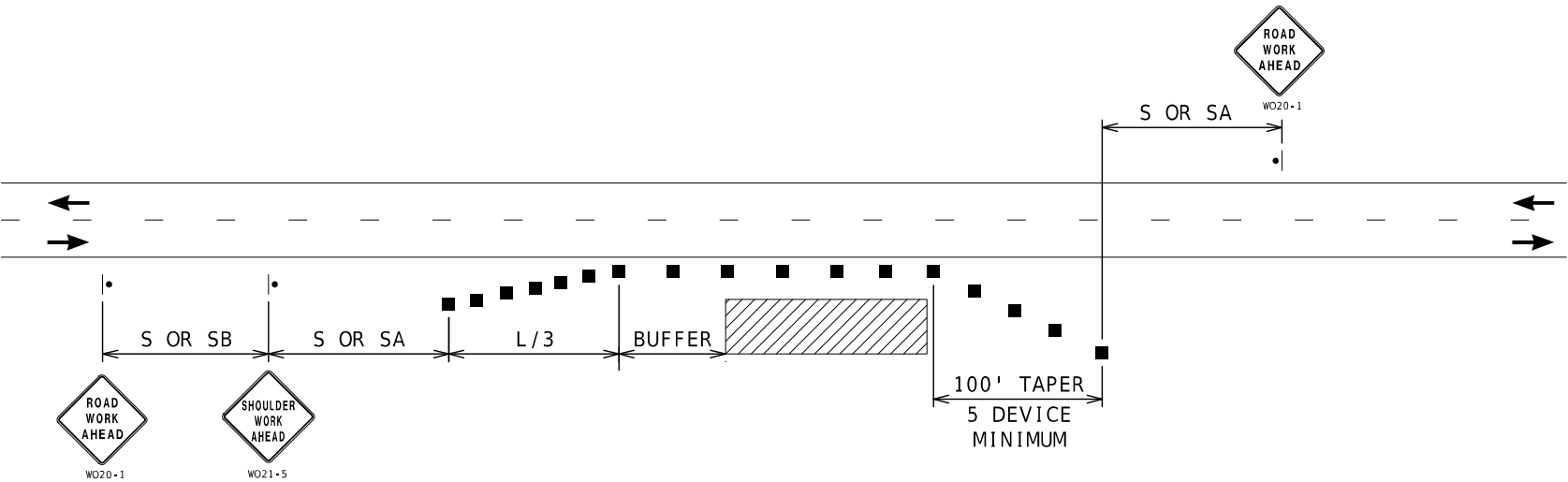




WORK BEYOND SHOULDER - UNDIVIDED OR DIVIDED ROADWAYS

USED FOR WORK THAT OCCURS OFF THE ROADWAY SHOULDER BUT WITHIN THE CLEAR ZONE.  
NOT TO BE USED WHEN WORK VEHICLES ARE PARKED ALONG THE SHOULDER EVEN WHEN  
THE WORK IS BEING PERFORMED OFF THE SHOULDER.

NOTES :  
SEE TCP SHEET 1 FOR SIGN SPACING AND TAPER LENGTHS.



SHOULDER WORK - UNDIVIDED ROADWAYS

USED FOR WORK ON SHOULDER OR FOR WORK OFF SHOULDER  
WITH WORK VEHICLES PARKED ON THE SHOULDER.

NOTES :  
SEE TCP SHEET 1 FOR SIGN SPACING AND TAPER LENGTHS.



DATE PREPARED  
10/24/2025

ROUTE 149	STATE MO
DISTRICT SW	SHEET NO. 3
COUNTY BATES / VERNON	
JOB NO. JSR0179	
CONTRACT ID.	
PROJECT NO.	
BRIDGE NO.	

DATE	DESCRIPTION

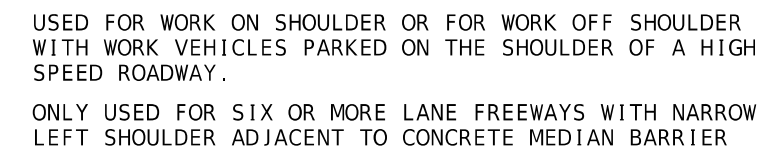
MISSOURI HIGHWAYS AND TRANSPORTATION COMMISSION



105 WEST CAPITOL  
JEFFERSON CITY, MO 65102  
1-888-ASK-MODOT (1-888-275-6636)



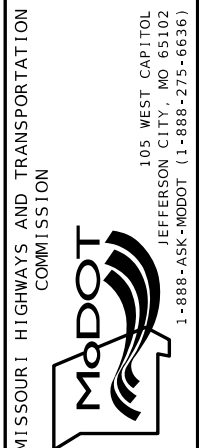
USED FOR WORK ON SHOULDER OR FOR WORK OFF SHOULDER  
WITH WORK VEHICLES PARKED ON THE SHOULDER OF A HIGH SPEED ROADWAY.



RIGHT SHOULDER WORK  
MULTI-LANE FREEWAYS WITH MEDIAN BARRIER

NOTES:

SEE TCP SHEET 1 FOR SIGN SPACING AND TAPER LENGTHS.



TRAFFIC CONTROL  
SHEET 3 OF 10





NOTES:

SEE TCP SHEET 1 FOR SIGN SPACING AND TAPER LENGTHS.



NOTES:

SEE TCP SHEET 1 FOR SIGN SPACING AND TAPER LENGTHS.



10-24-2025 10:20:34  
CAMERON SOOY - CIVIL  
MO-PE-2021019715

DATE PREPARED  
10/24/2025

ROUTE	STATE
I 49	MO

DISTRICT	SHEET NO.
SW	6

COUNTY  
BATES / VERNON

JOB NO.  
JSR0179

CONTRACT ID.
--------------

PROJECT NO.
-------------

BRIDGE NO.

[illegible]

**MISSOURI HIGHWAYS AND TRANSPORTATION  
COMMISSION**

**MoDOT**

105 WEST CAPITOL  
JEFFERSON CITY, MO 65102  
1-888-ASK-MODOT (1-888-275-6636)

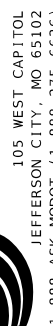
TRAFFIC CONTROL  
SHEET 5 OF 10



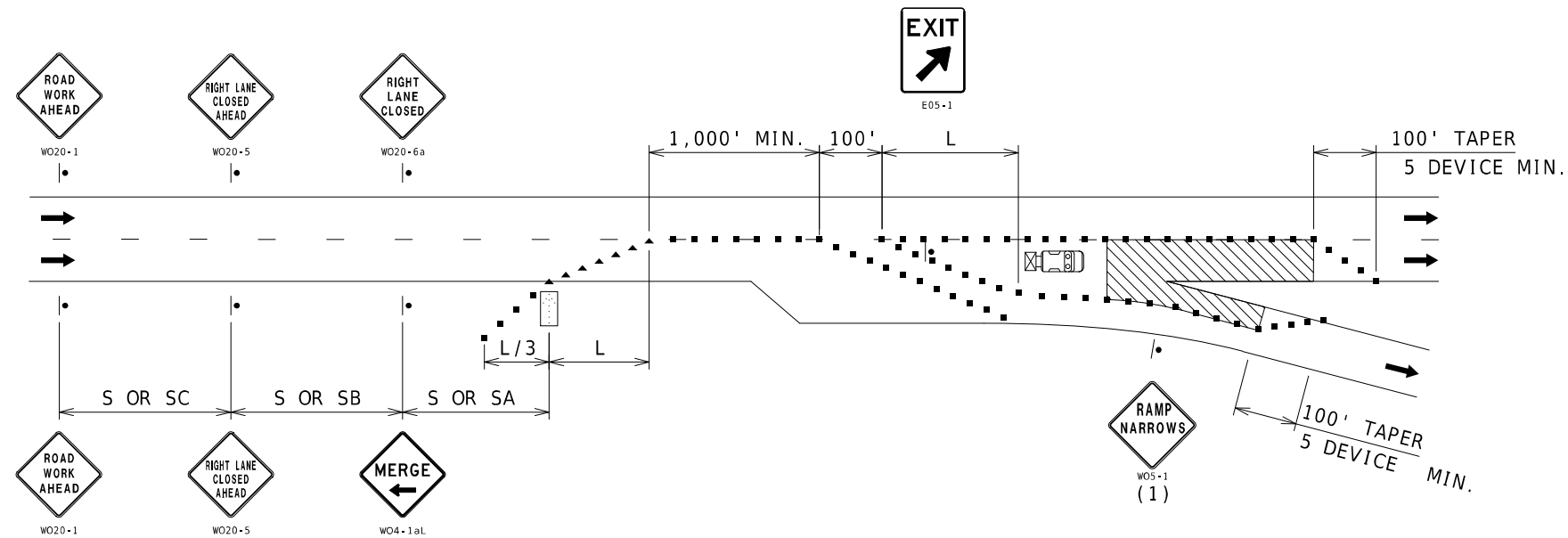
(1) CHANNELIZER SPACING AT 50'.



(1) CHANNELIZER SPACING AT 50'.



TRAFFIC CONTROL  
SHEET 6 OF 10



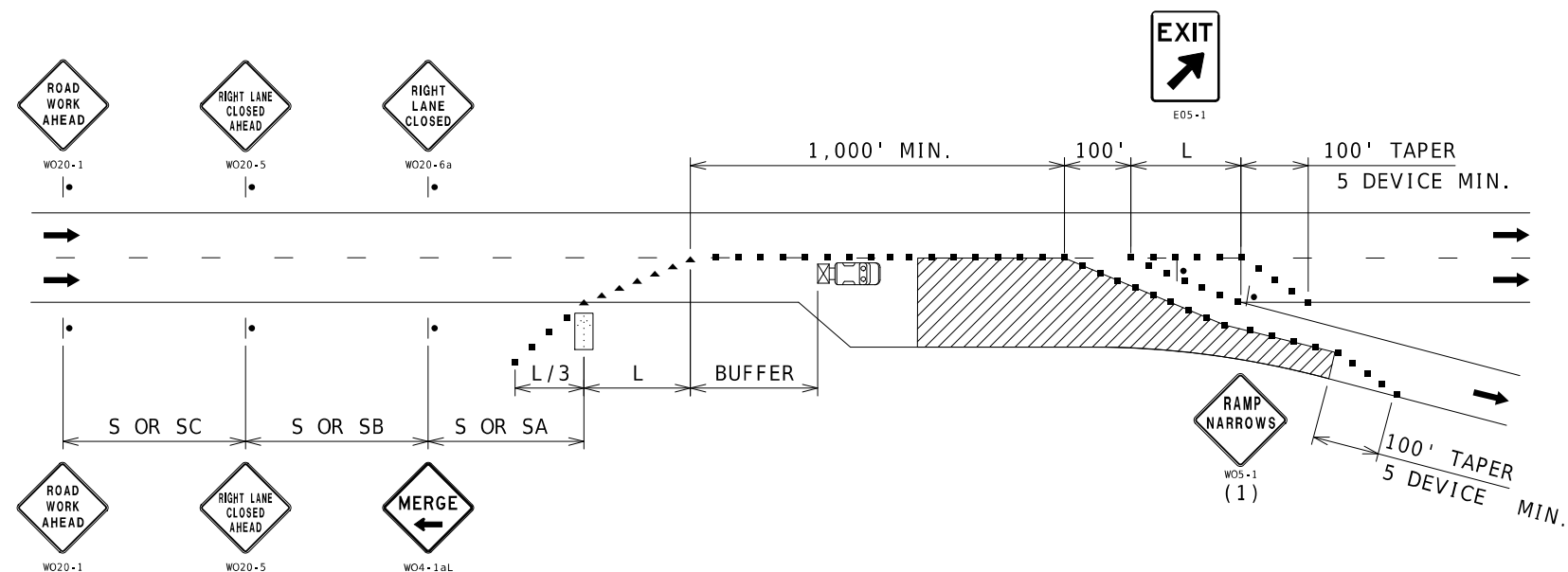
NOTES:

SEE TCP SHEET 1 FOR SIGN SPACING AND TAPER LENGTHS.

(1) SIGN ONLY REQUIRED WHEN RAMP WIDTH IS REDUCED.

(2) CHANNELIZER SPACING AT 50'.

## EXIT RAMP AREA MAINLINE WORK



NOTES:

SEE TCP SHEET 1 FOR SIGN SPACING AND TAPER LENGTHS.

(1) SIGN ONLY REQUIRED WHEN RAMP WIDTH IS REDUCED.

(2) CHANNELIZER SPACING AT 50'.

## EXIT RAMP AREA DECELERATION LANE WORK



DATE PREPARED  
10/24/2025

ROUTE 149 STATE MO

DISTRICT SW SHEET NO. 8

COUNTY BATES / VERNON

JOB NO. JSR0179

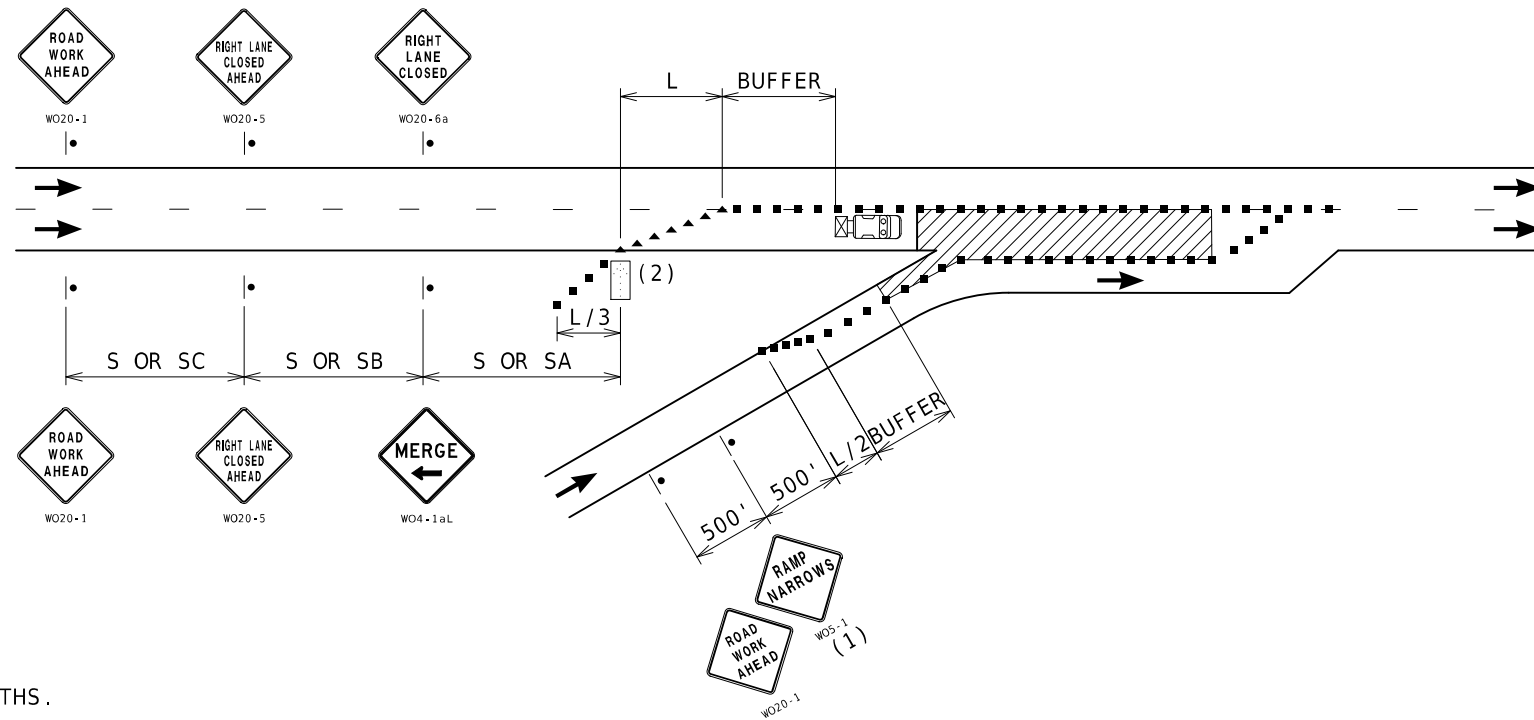
CONTRACT ID.

PROJECT NO.

BRIDGE NO.

DATE	DESCRIPTION





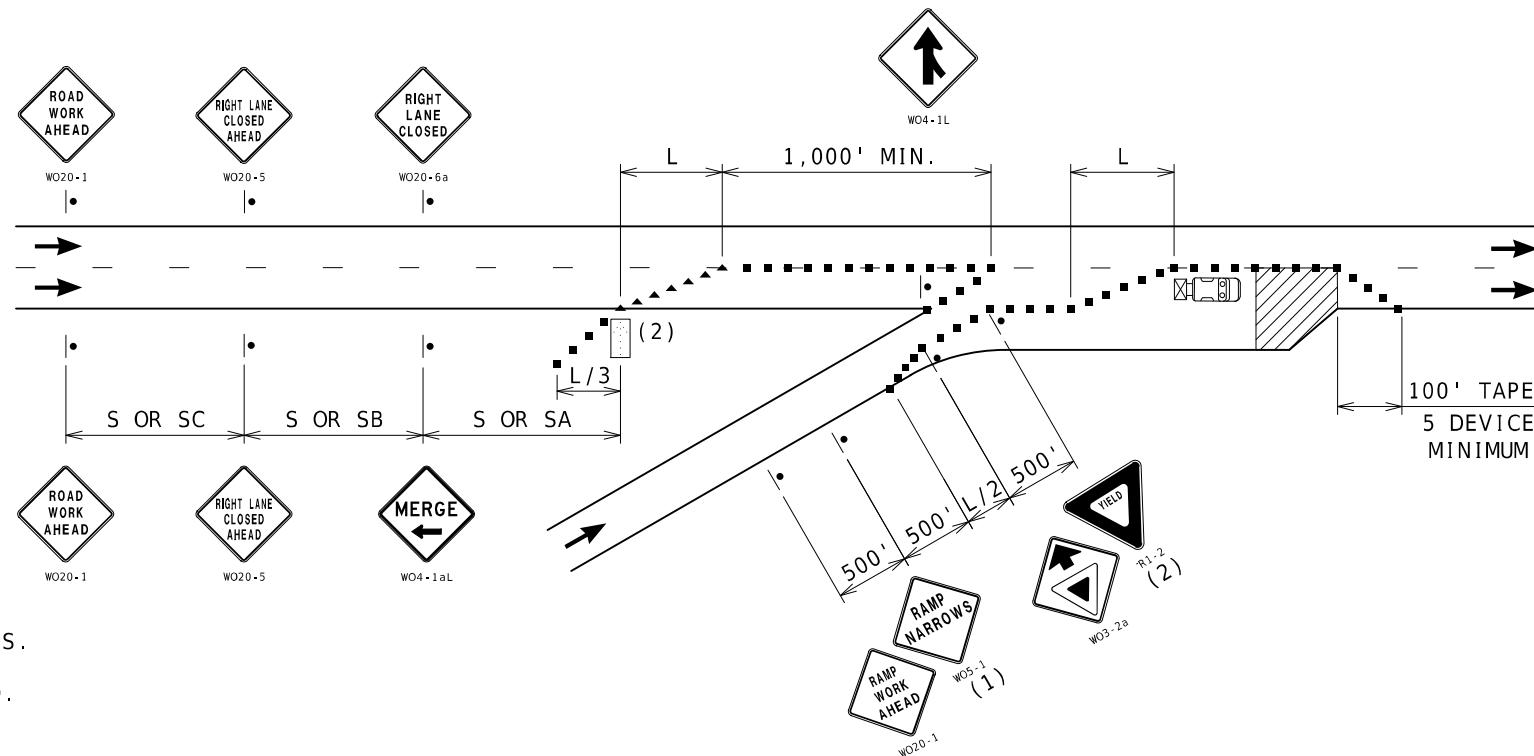
NOTES:

SEE TCP SHEET 1 FOR SIGN SPACING AND TAPER LENGTHS.

(1) SIGN ONLY REQUIRED WHEN RAMP WIDTH IS REDUCED.

(2) THE LOCATION OF THE SIGN SEQUENCE AND MERGE TAPER SHOULD BE ADJUCSTED SO THAT THE ARROW PANEL LOCATION IS NOT CONFUSING TO MOTORIST ON THE RAMP.

ENTRANCE RAMP AREA  
MAINLINE WORK



NOTES:

SEE TCP SHEET 1 FOR SIGN SPACING AND TAPER LENGTHS.

(1) SIGN ONLY REQUIRED WHEN RAMP WIDTH IS REDUCED.

(2) SIGN SHOULD BE PLACED ON THE RAMP TO PROVIDE ADEQUATE VISIBILITY OF MAINLINE TRAFFIC.

(3) THE LOCATION OF THE SIGN SEQUENCE AND MERGE TAPER SHOULD BE ADJUCSTED SO THAT THE ARROW PANEL LOCATION IS NOT CONFUSING TO MOTORIST ON THE RAMP.

ENTRANCE RAMP AREA  
ACCELERATION LANE WORK



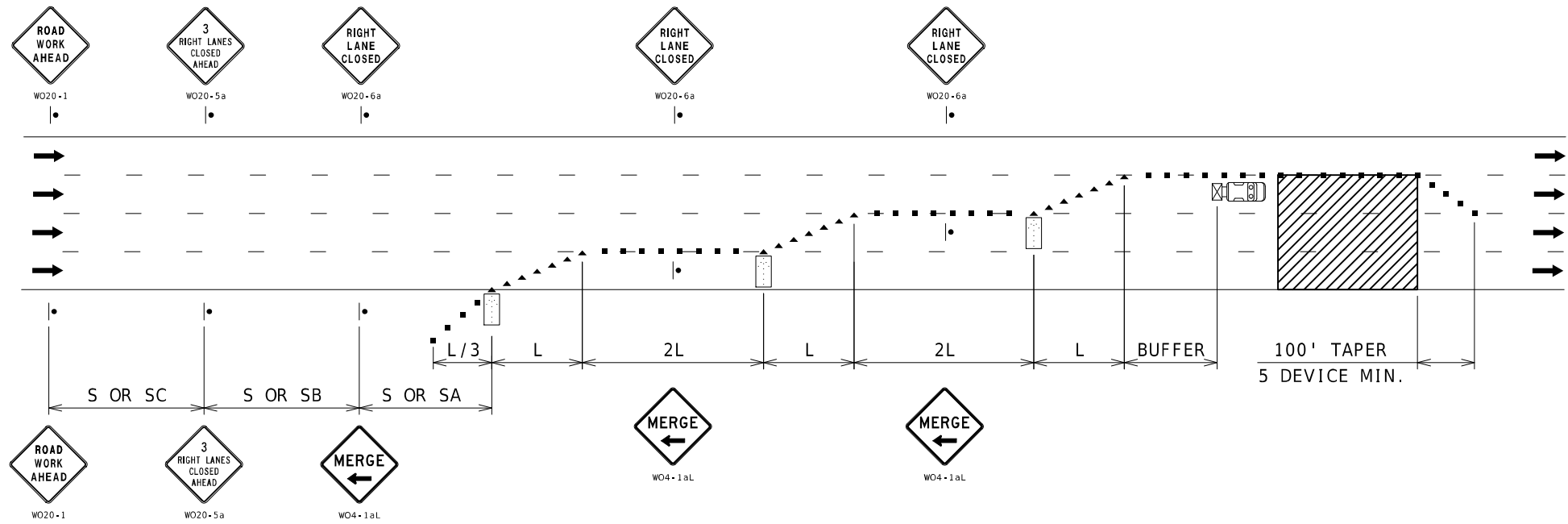
DATE PREPARED	
10/24/2025	
ROUTE	STATE
149	MO
DISTRICT	SHEET NO.
SW	9
COUNTY	
BATES / VERNON	
JOB NO.	
JSR0179	
CONTRACT ID.	
PROJECT NO.	
BRIDGE NO.	

DATE	DESCRIPTION

MISSOURI HIGHWAYS AND TRANSPORTATION COMMISSION

105 WEST CAPITOL  
JEFFERSON CITY, MO 65102  
1-888-ASK-MODOT (1-888-275-6636)





NOTES:  
SEE TCP SHEET 1 FOR SIGN SPACING AND TAPER LENGTHS.

TRIPLE LANE CLOSURE

STATE OF MISSOURI

CAMERON

SOOY

NUMBER

PE-2021019715

PROFESSIONAL ENGINEER

10/24/2025

DATE PREPARED

ROUTE

149

STATE

MO

DISTRICT

SW

SHEET NO.

11

COUNTY

BATES / VERNON

JOB NO.

JSR0179

CONTRACT ID.

PROJECT NO.

BRIDGE NO.

DESCRIPTION

DATE

MISSOURI HIGHWAYS AND TRANSPORTATION

COMMISSION

MoDOT

105 WEST CAPITOL

JEFFERSON CITY, MO 65102

1-888-ASK-MODOT (1-888-275-6636)

TRAFFIC CONTROL

SHEET 10 OF 10