

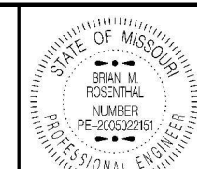
DESIGN DESIGNATION

| |
|---|
| CALDWELL COUNTY - ROUTE U A.A.D.T. - 2026 = 159 V = 55 M.P.H |
| CALDWELL COUNTY - ROUTE B A.A.D.T. - 2026 = 243 V = 55 M.P.H |
| CALDWELL COUNTY - ROUTE K A.A.D.T. - 2026 = 11 V = 55 M.P.H |
| GRUNDY & LIVINGSTON COUNTY - ROUTE W A.A.D.T. - 2026 = 636 V = 55 M.P.H |
| GRUNDY COUNTY - ROUTE WW A.A.D.T. - 2026 = 58 V = 55 M.P.H |
| LIVINGSTON & LINN COUNTY - ROUTE B A.A.D.T. - 2026 = 297 V = 55 M.P.H |
| CHARITON COUNTY - ROUTE F A.A.D.T. - 2026 = 141 V = 55 M.P.H |

**MISSOURI HIGHWAYS AND TRANSPORTATION COMMISSION
PLANS FOR PROPOSED
STATE HIGHWAY
CALDWELL, GRUNDY, LIVINGSTON,
LINN & CHARITON COUNTY LOW VOLUME RESURFACING**

INDEX OF SHEETS

| DESCRIPTION | SHEET NUMBER |
|-------------------------------------|--------------|
| TITLE SHEET | 1 |
| TYPICAL SECTIONS (TS) (1 SHEET)---- | 2 |
| QUANTITIES (QU) (7 SHEETS)----- | 3 |
| SPECIAL SHEETS (SS) | 4-8 |
| TRAFFIC CONTROL SHEETS (TC) | 9-14 |



Brian M. Rosenthal
05/05/2025 13:11:10 PM
BRIAN M. ROSENTHAL - CIVIL
MO-PE-200522151

DATE PREPARED
5/5/2026

| | |
|----------|-----------|
| ROUTE | STATE |
| VAR | MO |
| DISTRICT | SHEET NO. |
| NW | 1 |

COUNTY
VARIOUS

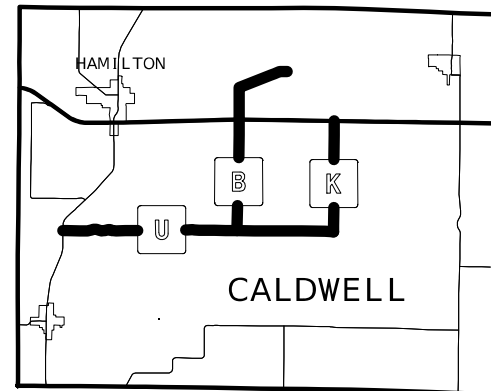
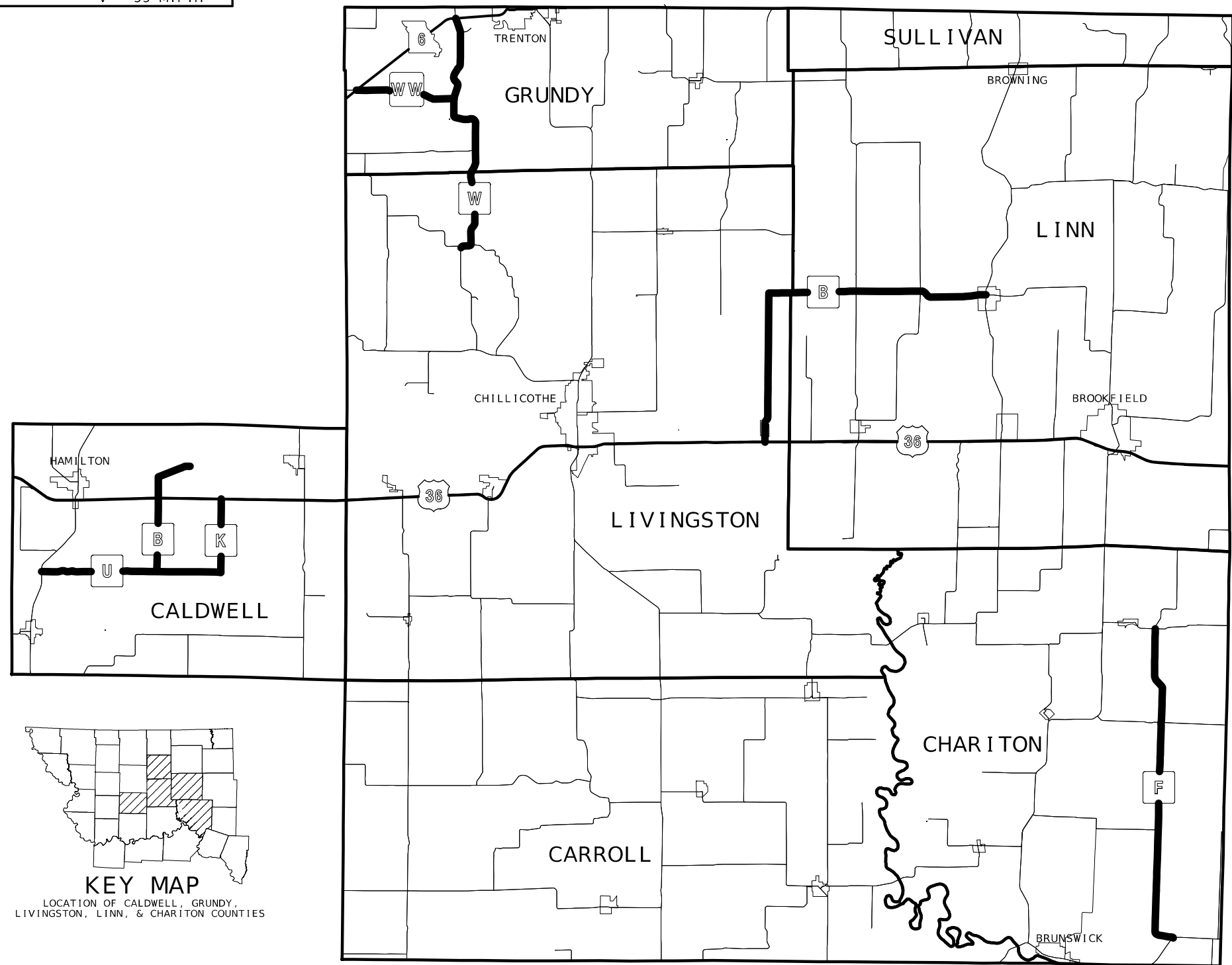
JOB NO.
JNWM0131

CONTRACT ID.

PROJECT NO.

BRIDGE NO.

| DESCRIPTION | DATE |
|----------------------------|--------------|
| LENGTH OF ROUTE U | |
| BEGINNING OF ROUTE U | 0.020 |
| END OF ROUTE U | 8.537 |
| APPARENT LENGTH OF SECTION | 8.517 MILES |
| EXCEPTIONS: | |
| BRIDGE N0318 | -0.016 MILES |
| BRIDGE N0319 | -0.020 MILES |
| BRIDGE N0320 | -0.017 MILES |
| TRENTON SUB RR CROSS. | -0.005 MILES |
| BRIDGE N0735 | -0.019 MILES |
| NET LENGTH OF SECTION | 8.440 MILES |
| LENGTH OF ROUTE B | |
| BEGINNING OF ROUTE B | 0.000 |
| END OF ROUTE B | 5.999 |
| APPARENT LENGTH OF SECTION | 5.999 MILES |
| EXCEPTIONS: | |
| ROUTE 36 | -0.027 MILES |
| NET LENGTH OF SECTION | 5.973 MILES |
| LENGTH OF ROUTE K | |
| BEGINNING OF ROUTE K | 0.000 |
| END OF ROUTE K | 3.476 |
| NET LENGTH OF SECTION | 3.476 MILES |
| LENGTH OF ROUTE W | |
| BEGINNING OF ROUTE W | 0.032 |
| END OF ROUTE W | 12.442 |
| APPARENT LENGTH OF SECTION | 12.410 MILES |
| EXCEPTIONS: | |
| BRIDGE A9243 | -0.047 MILES |
| BRIDGE A3876 | -0.043 MILES |
| BRIDGE A9242 | -0.107 MILES |
| BRIDGE A9161 | -0.031 MILES |
| BRIDGE A5661 | -0.052 MILES |
| NET LENGTH OF SECTION | 12.130 MILES |
| LENGTH OF ROUTE WW | |
| BEGINNING OF ROUTE WW | 0.000 |
| END OF ROUTE WW | 4.841 |
| APPARENT LENGTH OF SECTION | 4.841 MILES |
| EXCEPTIONS: | |
| BRIDGE B0133 | -0.026 MILES |
| NET LENGTH OF SECTION | 4.815 MILES |
| LENGTH OF ROUTE B | |
| BEGINNING OF ROUTE B | 0.036 |
| END OF ROUTE B | 17.540 |
| APPARENT LENGTH OF SECTION | 17.504 MILES |
| EXCEPTIONS: | |
| BRIDGE A1802 | -0.022 MILES |
| MO 139 | -0.005 MILES |
| BRIDGE A8232 | -0.050 MILES |
| NET LENGTH OF SECTION | 17.427 MILES |
| LENGTH OF ROUTE F | |
| BEGINNING OF ROUTE F | 0.000 |
| END OF ROUTE F | 15.504 |
| APPARENT LENGTH OF SECTION | 15.504 MILES |
| EXCEPTIONS: | |
| BRIDGE R0405 | -0.023 MILES |
| ROUTE C | -0.005 MILES |
| NET LENGTH OF SECTION | 15.475 MILES |
| NET LENGTH OF PROJECT | 67.736 MILES |
| STATE LENGTH | 67.736 MILES |



KEY MAP
LOCATION OF CALDWELL, GRUNDY,
LIVINGSTON, LINN, & CHARITON COUNTIES

NOT TO SCALE

MISSOURI HIGHWAYS AND TRANSPORTATION COMMISSION





Brian M. Rosenthal
 04/27/2026 7:00:12 PM
 BRIAN M. ROSENTHAL - CIVIL
 MO-PE-200522151

DATE PREPARED
 4/27/2026

| | |
|-------|-------|
| ROUTE | STATE |
| VAR | MO |

| | |
|----------|-----------|
| DISTRICT | SHEET NO. |
| NW | 9 |

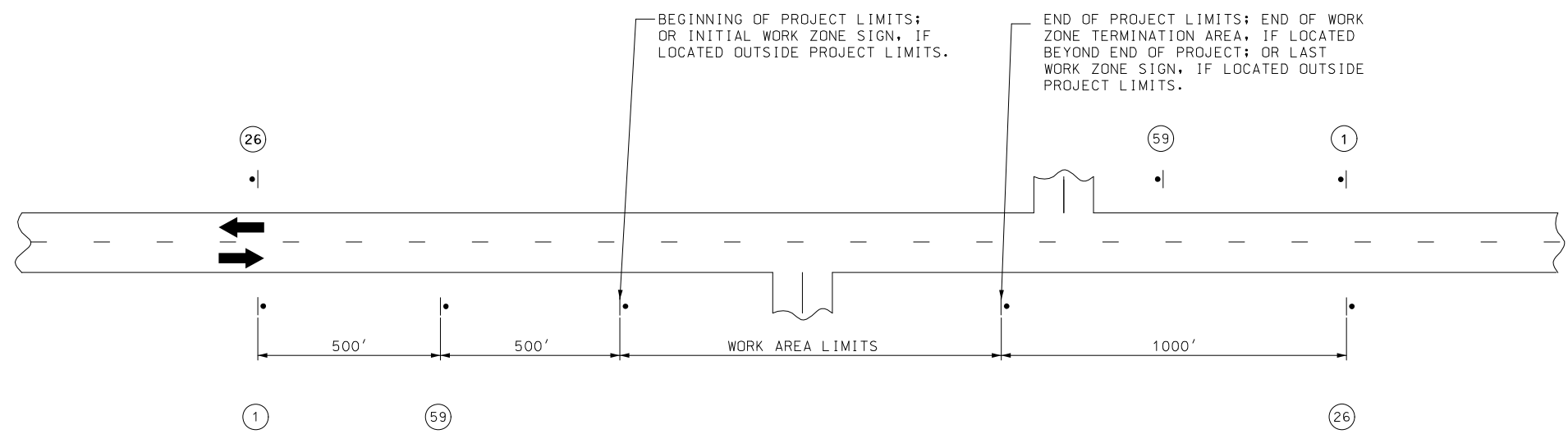
COUNTY
 VARIOUS

JOB NO.
 JNWM0131

CONTRACT ID.

PROJECT NO.

BRIDGE NO.

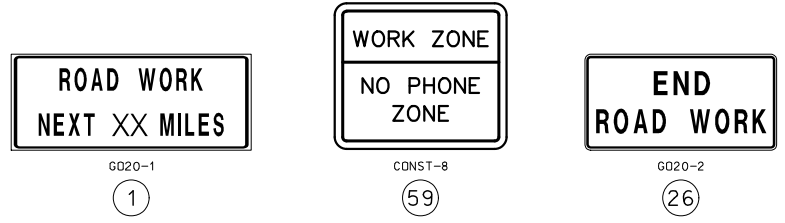


NOTES:

SIGN (1) AND (26) ARE ONLY USED ON PROJECT LENGTHS 2 MILES OR GREATER.

PROVIDE SIGNS IN EACH DIRECTION ON TWO-WAY HIGHWAY.

DISTANCE MAY BE ADJUSTED ACCORDING TO FIELD CONDITIONS.



| DATE | DESCRIPTION |
|------|-------------|
| | |
| | |
| | |
| | |
| | |
| | |
| | |
| | |
| | |
| | |

MISSOURI HIGHWAYS AND TRANSPORTATION COMMISSION

105 WEST CAPITOL
 JEFFERSON CITY, MO 65102
 1-888-ASK-MODOT (1-888-275-6636)



W020-1
2



W020-4
7

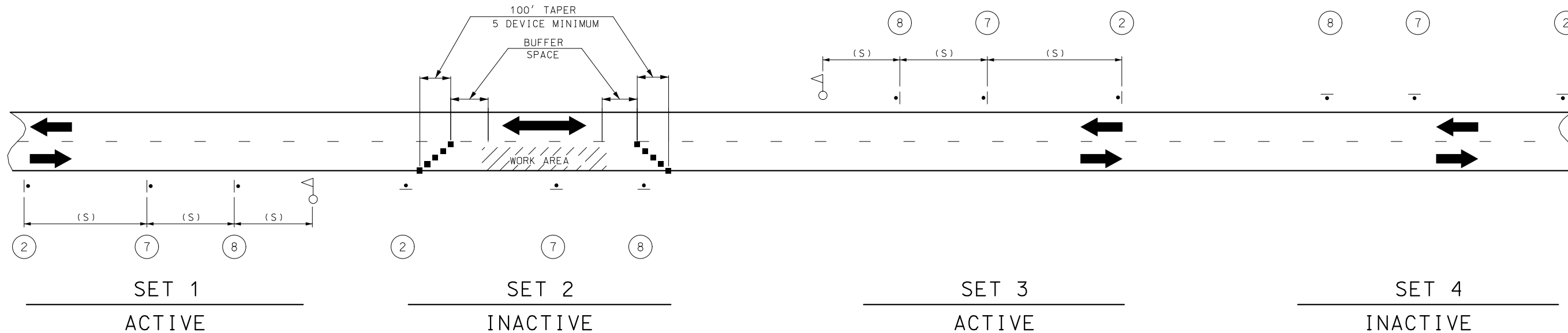


W020-7a
8



G020-4
53

SIGN 53, "PILOT CAR FOLLOW ME" SHALL BE THE CONTRACTOR'S RESPONSIBILITY WHEN IN USE DURING OPERATION.



NOTES:

THIS PLAN IS FOR DAYLIGHT FLAGGING OPERATIONS ONLY. WHEN NIGHT WORK IS REQUIRED, OR OTHERWISE ALLOWED BY THE ENGINEER, WORK ZONE LIGHTING SHALL BE PROVIDED IN ACCORDANCE WITH SEC 616.5.2.

CHANNELIZING DEVICES LOCATED DOWNSTREAM OF THE ONE-LANE, TWO-WAY TAPER ARE OPTIONAL. THESE DEVICES SHOULD BE ELIMINATED WHEN THEIR USE WILL REDUCE THE USABLE LANE WIDTH, INCLUDING ANY ACCEPTABLE SHOULDERS, TO LESS THAN 10' OR WILL SIGNIFICANTLY AFFECT THE RESURFACING OPERATION.

SIGN SETS 1 AND 3 ARE ACTIVE AND (I.E., SIGNS FACE ONCOMING TRAFFIC) SIGN SETS 2 AND 4 ARE INACTIVE (I.E., SIGNS DO NOT FACE EITHER DIRECTION OF TRAFFIC) WHEN THE RESURFACING OPERATION IS LOCATED BETWEEN SIGN SETS 1 AND 3.

WHEN SIGN SETS 2 AND 4 ARE ACTIVE, SIGN SETS 1 AND 3 BECOME INACTIVE AND ARE ADVANCED TO BECOME SETS 2 AND 4 WITH SIGN LEGENDS TURNED AWAY FROM BOTH DIRECTIONS OF TRAFFIC. WHEN THE RESURFACING OPERATION ADVANCES TO BETWEEN SIGN SETS 2 AND 4, SIGN SETS 2 AND 4 BECOME ACTIVE (I.E., NEW SIGN SETS 1 AND 3) AND SIGN SETS 1 AND 3 ADVANCED IN THE DIRECTION OF THE OPERATION (I.E., NEW SIGN SETS 2 AND 4).

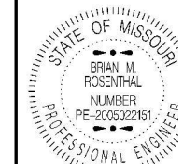
■ - CHANNELIZERS

○ - FLAGGER

| SPEED | SIGN SPACING (FT) (1) | BUFFER SPACE |
|------------------------|--------------------------|--------------|
| PERMANENT POSTED (MPH) | NON-DIVIDED HIGHWAYS (S) | LENGTH (FT) |
| 0-35 | 200 | 250 |
| 40-45 | 350 | 360 |
| 50-55 | 500 | 495 |
| 60-70 | 1000 | 730 |

(1) SPACING BETWEEN SIGNS, BETWEEN LAST SIGN AND FLAGGER, BEGINNING OF TAPER OR SIGNED CONDITION.

SPACING MAY BE ADJUSTED AS NECESSARY TO MEET FIELD CONDITIONS.



Brian M. Rosenthal
04/27/2026 7:00:24 PM
BRIAN M. ROSENTHAL - CIVIL
MO-PE-2005022151

DATE PREPARED
4/27/2026

ROUTE STATE
VAR MO

DISTRICT SHEET NO.
NW 10

COUNTY

VARIOUS

JOB NO.
JNWMO131

CONTRACT ID.

PROJECT NO.

BRIDGE NO.

| DESCRIPTION | DATE |
|-------------|------|
| | |
| | |
| | |
| | |
| | |
| | |
| | |
| | |
| | |

MISSOURI HIGHWAYS AND TRANSPORTATION COMMISSION
105 WEST CAPITOL
JEFFERSON CITY, MO 65102
1-888-ASK-MODOT (1-888-275-6636)



