

WB CROSSOVER 2
CROSS SECTIONS
SHEET 7 OF 27



THIS SHEET HAS BEEN
SIGNED, SEALED, AND DATED
ELECTRONICALLY.

DATE PREPARED
3/27/2026

ROUTE	STATE
150	MO
DISTRICT	SHEET NO.
KC	7

COUNTY
JACKSON

JOB NO.
JKU0140

CONTRACT ID.

PROJECT NO.

BRIDGE NO.

DESCRIPTION	DATE

MISSOURI HIGHWAYS AND TRANSPORTATION
COMMISSION

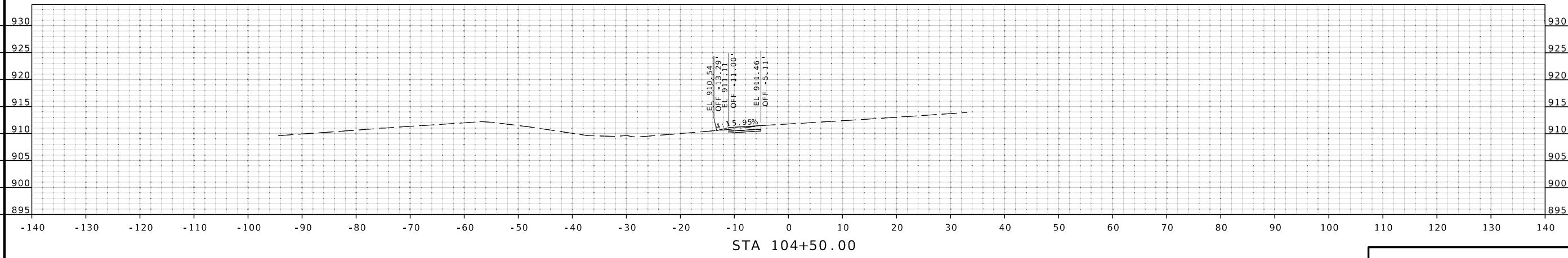
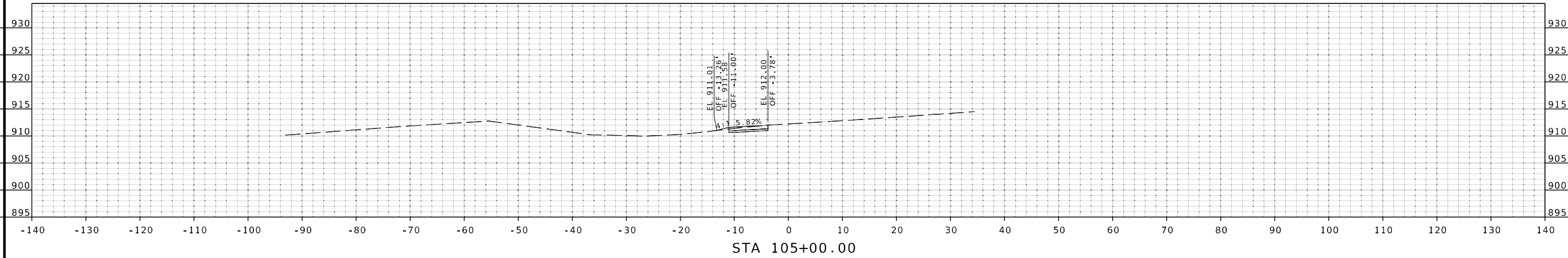
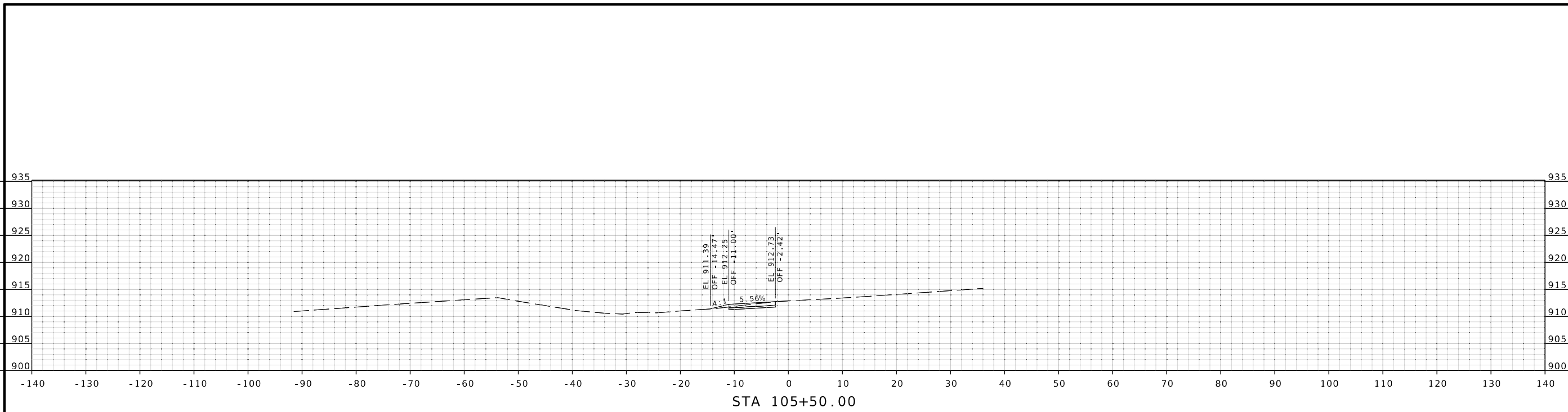
105 WEST CAPITOL
JEFFERSON CITY, MO 65102
1-888-ASK-MODOT (1-888-275-6636)

GBA
9801 Renner Blvd, Ste. 300
Lenexa, KS 66219
913.492.0400
GBAteam.com

GEORGE BUTLER
ASSOCIATES, INC.
PRO. ENGINEER 000133
ARCHITECT 000212
PRO. LAND SURVEYOR 000059

SHELBY P. REYNOLDS
PROFESSIONAL
ENGINEER
PE-2023018931

IF A SEAL IS PRESENT ON THIS SHEET IT HAS BEEN ELECTRONICALLY SEALED AND DATED.



WB CROSSOVER 2
CROSS SECTIONS
SHEET 8 OF 27



THIS SHEET HAS BEEN
SIGNED, SEALED, AND DATED
ELECTRONICALLY.

DATE PREPARED
3/27/2026

ROUTE	STATE
150	MO
DISTRICT	SHEET NO.
KC	8

COUNTY
JACKSON

JOB NO.
JKU0140

CONTRACT ID.

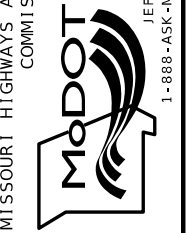
PROJECT NO.

BRIDGE NO.

DESCRIPTION	DATE

MISSOURI HIGHWAYS AND TRANSPORTATION
COMMISSION

105 WEST CAPITOL
JEFFERSON CITY, MO 65102
1-888-ASK-MODOT (1-888-275-6636)



GBA
9801 Renner Blvd, Ste. 300
Lenexa, KS 66219
913.492.0400
GBAteam.com

GEORGE BUTLER
ASSOCIATES, INC.
PRO. ENGINEER 000133
ARCHITECT 000212
PRO. LAND SURVEYOR 000059

SHELBY P. REYNOLDS
PROFESSIONAL
ENGINEER
PE-2023018931

IF A SEAL IS PRESENT ON THIS SHEET IT HAS BEEN ELECTRONICALLY SEALED AND DATED.



THIS SHEET HAS BEEN SIGNED, SEALED, AND DATED ELECTRONICALLY.

DATE PREPARED
3/27/2026

ROUTE STATE
150 MO

DISTRICT SHEET NO.
KC 12

COUNTY
JACKSON

JOB NO.
JKU0140

CONTRACT ID.

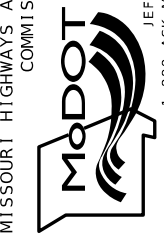
PROJECT NO.

BRIDGE NO.

DATE	DESCRIPTION

MISSOURI HIGHWAYS AND TRANSPORTATION COMMISSION

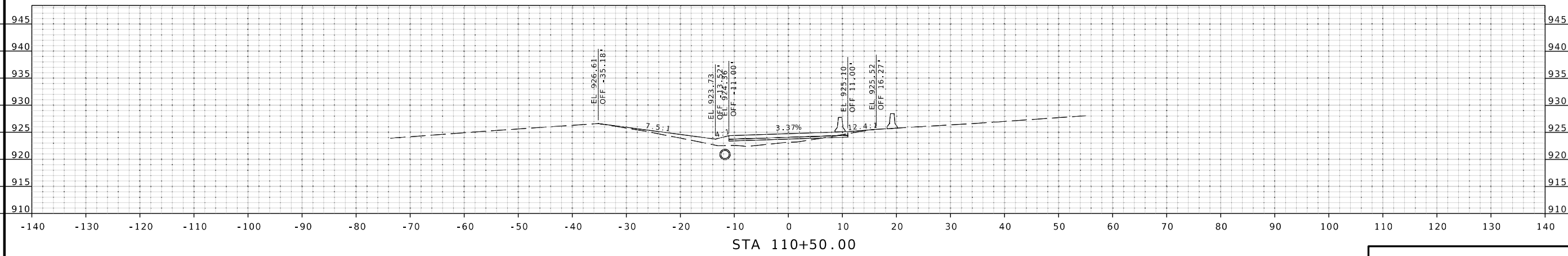
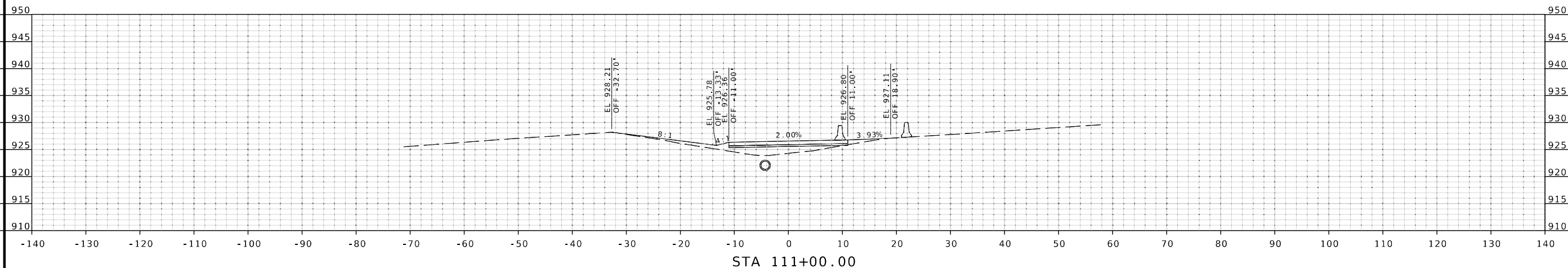
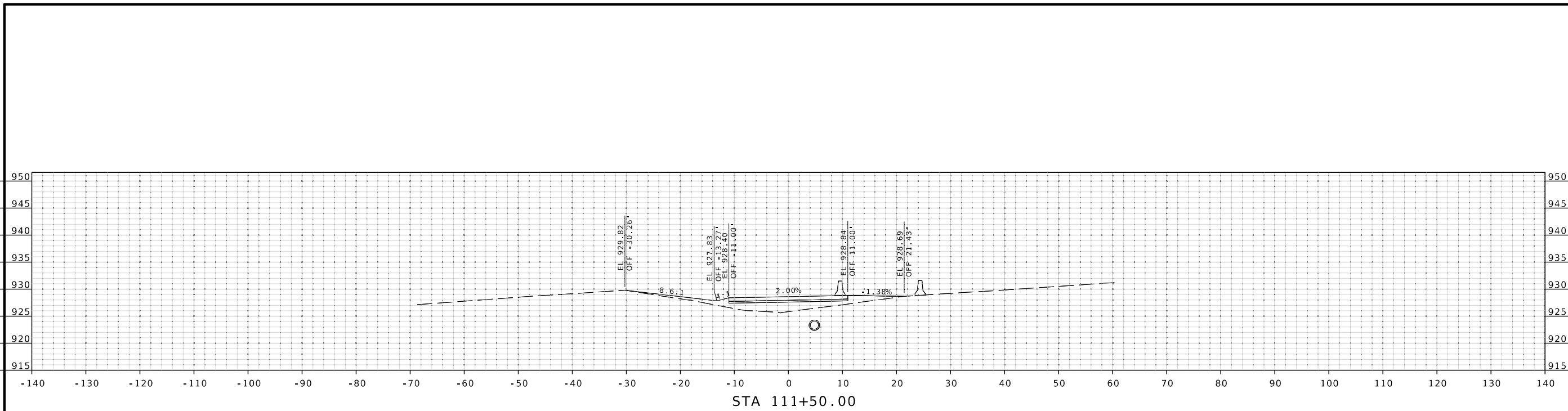
105 WEST CAPITOL
JEFFERSON CITY, MO 65102
1-888-ASK-MODOT (1-888-275-6636)



GBA
9801 Renner Blvd, Ste. 300
Lenexa, KS 66219
913.492.0400
GBAteam.com

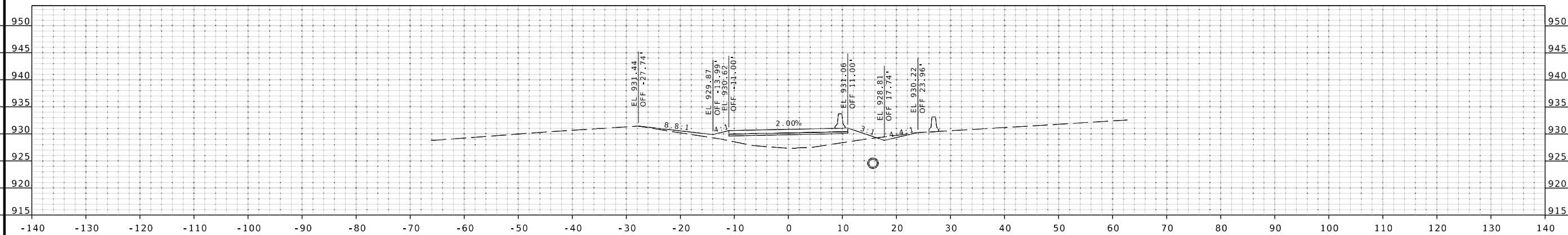
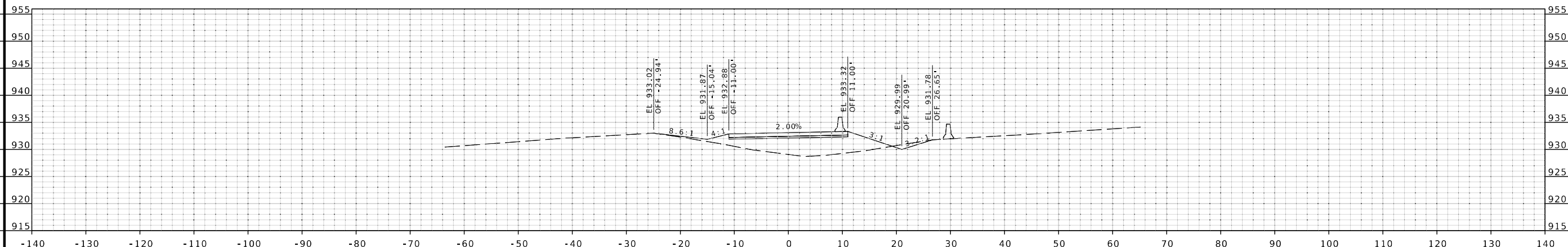
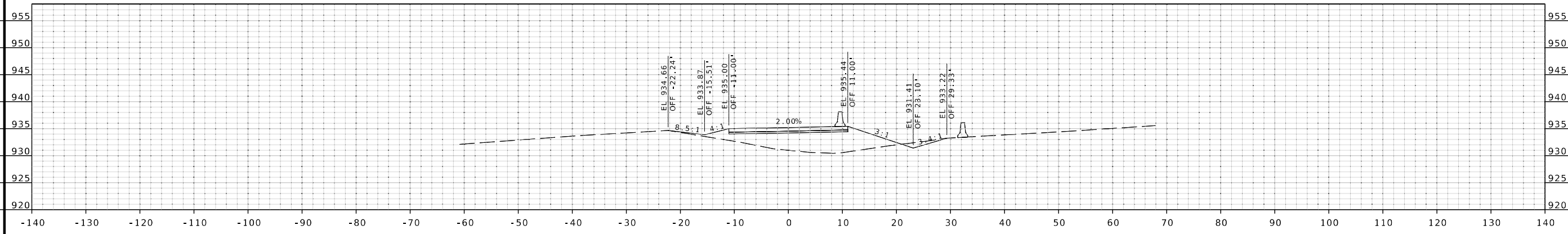
GEORGE BUTLER
ASSOCIATES, INC.
PRO. ENGINEER 000133
ARCHITECT 000212
PRO. LAND SURVEYOR 000059

SHELBY P. REYNOLDS
PROFESSIONAL
ENGINEER
PE-2023018931



WB CROSSOVER 2
CROSS SECTIONS
SHEET 12 OF 27

IF A SEAL IS PRESENT ON THIS SHEET IT HAS BEEN ELECTRONICALLY SEALED AND DATED.



WB CROSSOVER 2
CROSS SECTIONS
SHEET 13 OF 27



THIS SHEET HAS BEEN
SIGNED, SEALED, AND DATED
ELECTRONICALLY.

DATE PREPARED
3/27/2026

ROUTE 150	STATE MO
DISTRICT KC	SHEET NO. 13

COUNTY
JACKSON

JOB NO.
JKU0140

CONTRACT ID.

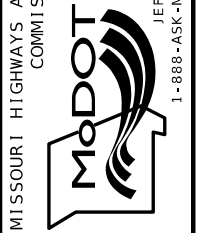
PROJECT NO.

BRIDGE NO.

DESCRIPTION	DATE

MISSOURI HIGHWAYS AND TRANSPORTATION
COMMISSION

105 WEST CAPITOL
JEFFERSON CITY, MO 65102
1-888-ASK-MODOT (1-888-275-6636)

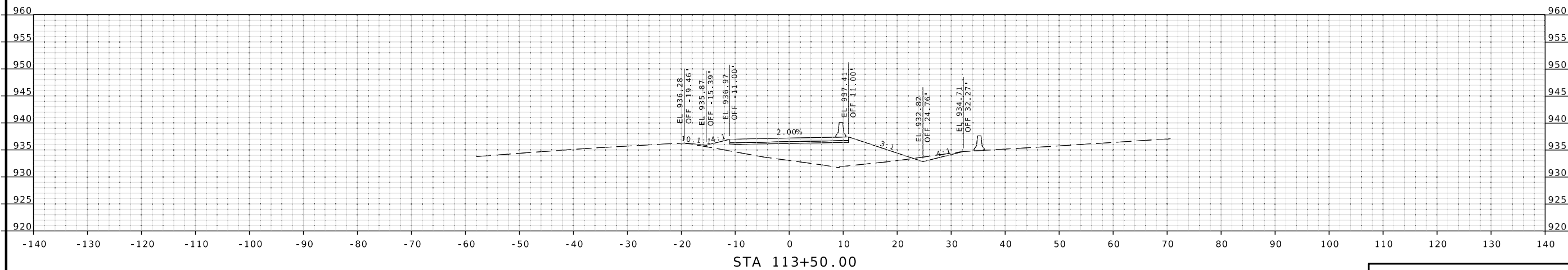
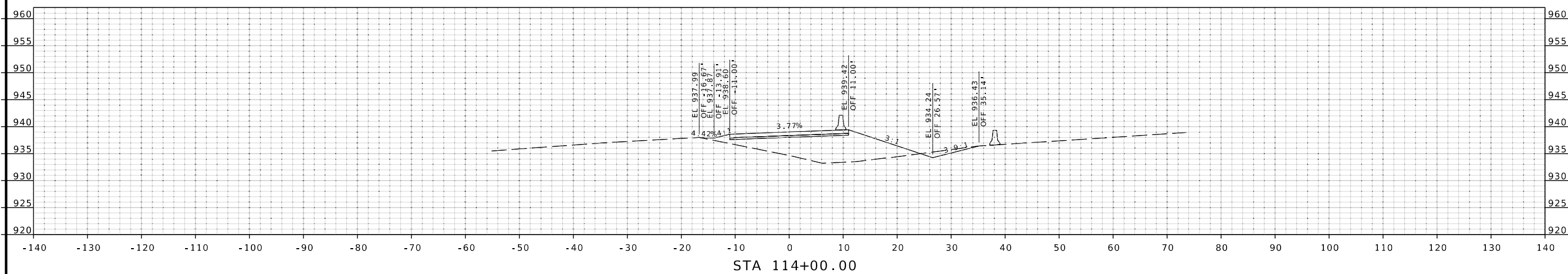
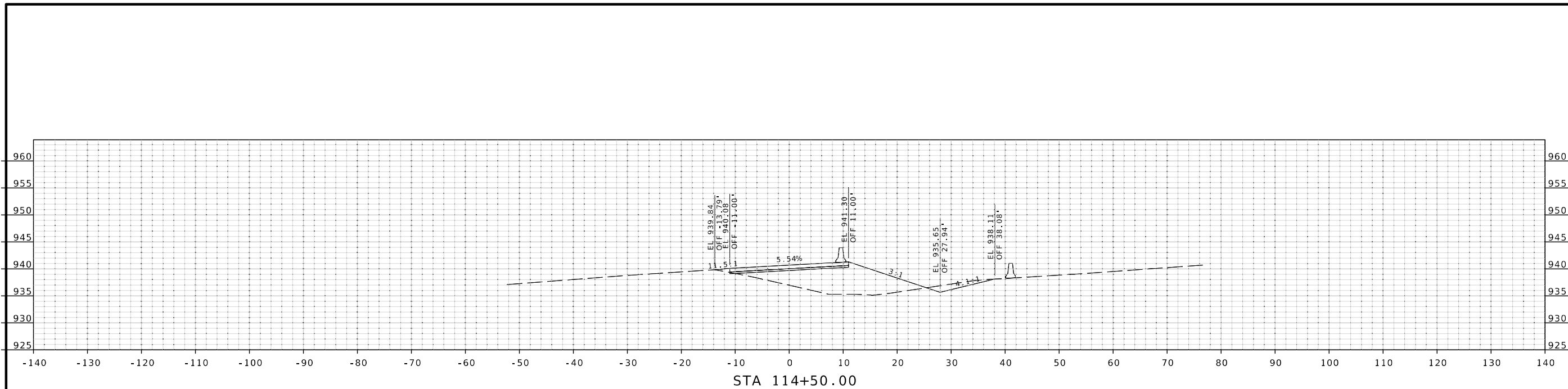


GBA
9801 Renner Blvd, Ste. 300
Lenexa, KS 66219
913.492.0400
GBAteam.com

GEORGE BUTLER
ASSOCIATES, INC.
PRO. ENGINEER 000133
ARCHITECT 000212
PRO. LAND SURVEYOR 000059

SHELBY P. REYNOLDS
PROFESSIONAL
ENGINEER
PE-2023018931

IF A SEAL IS PRESENT ON THIS SHEET IT HAS BEEN ELECTRONICALLY SEALED AND DATED.



WB CROSSOVER 2
CROSS SECTIONS
SHEET 14 OF 27



THIS SHEET HAS BEEN
SIGNED, SEALED, AND DATED
ELECTRONICALLY.

DATE PREPARED
3/27/2026

ROUTE 150	STATE MO
DISTRICT KC	SHEET NO. 14

COUNTY
JACKSON

JOB NO.
JKU0140

CONTRACT ID.

PROJECT NO.

BRIDGE NO.

DESCRIPTION

DATE

MISSOURI HIGHWAYS AND TRANSPORTATION
COMMISSION

105 WEST CAPITOL
JEFFERSON CITY, MO 65102
1-888-ASK-MODOT (1-888-275-6636)



GBA

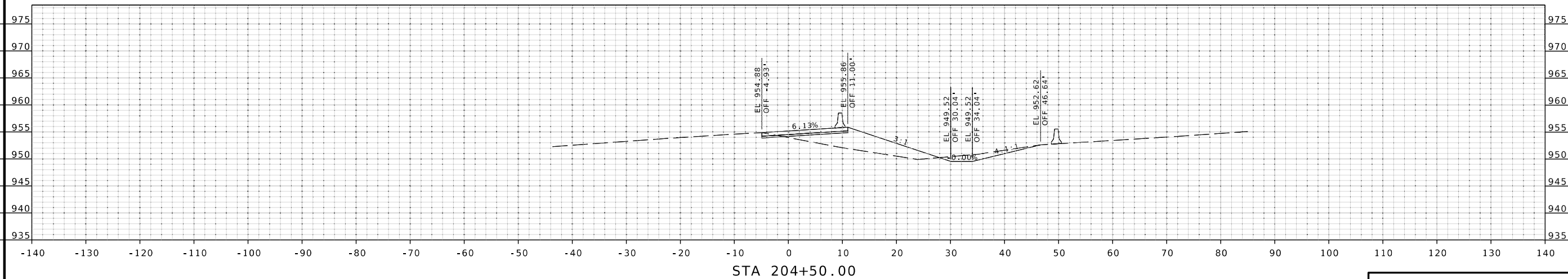
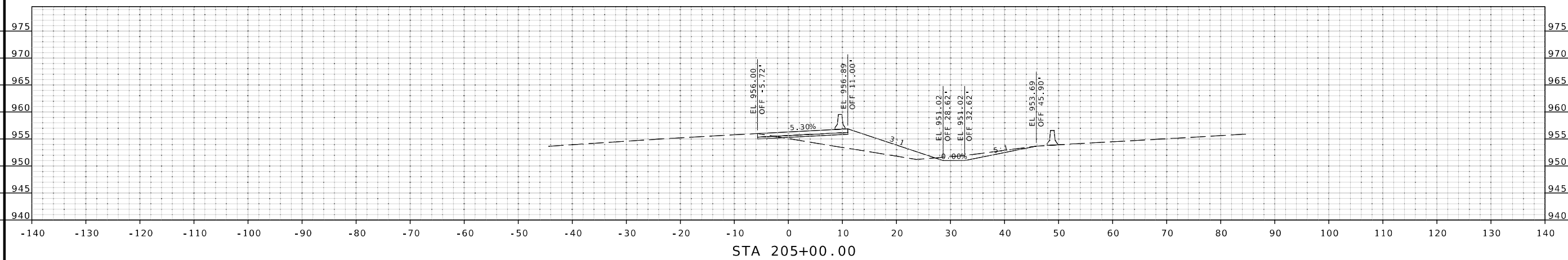
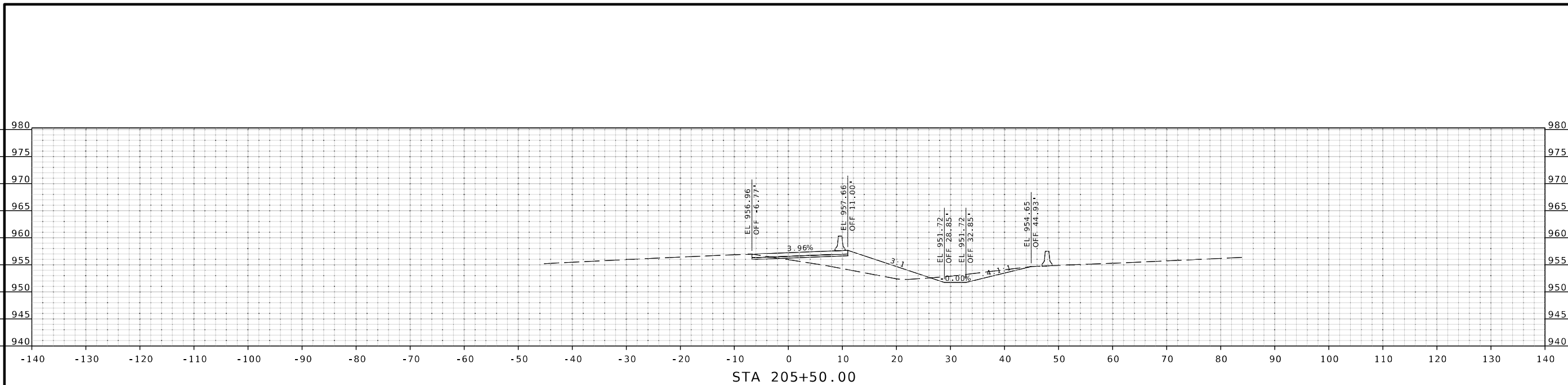
9801 Renner Blvd, Ste. 300
Lenexa, KS 66219
913.492.0400
GBAteam.com

GEORGE BUTLER
ASSOCIATES, INC.
PRO. ENGINEER 000133
ARCHITECT 000212
PRO. LAND SURVEYOR 000059

SHELBY P. REYNOLDS
PROFESSIONAL
ENGINEER
PE-2023018931

REV.

IF A SEAL IS PRESENT ON THIS SHEET IT HAS BEEN ELECTRONICALLY SEALED AND DATED.



EB CROSSOVER 2
CROSS SECTIONS
SHEET 19 OF 27



THIS SHEET HAS BEEN
SIGNED, SEALED, AND DATED
ELECTRONICALLY.

DATE PREPARED
3/27/2026

ROUTE 150 STATE MO
DISTRICT KC SHEET NO. 19

COUNTY
JACKSON

JOB NO.
JKU0140

CONTRACT ID.

PROJECT NO.

BRIDGE NO.

DESCRIPTION	DATE

MISSOURI HIGHWAYS AND TRANSPORTATION
COMMISSION

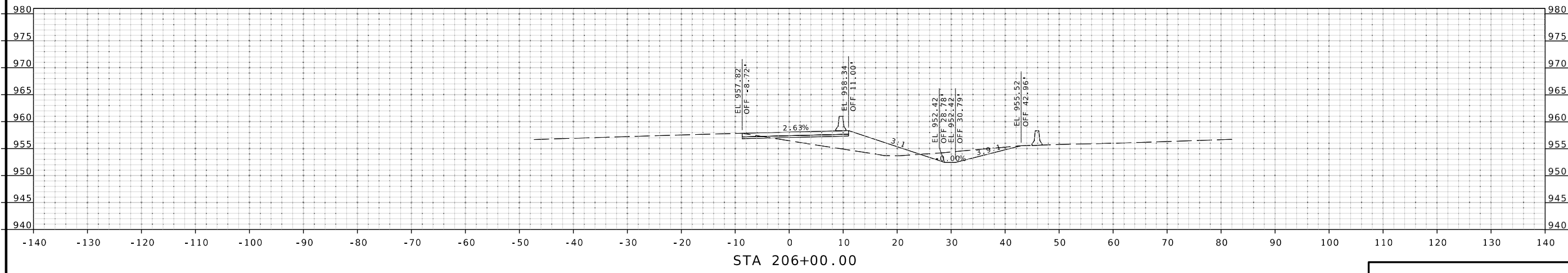
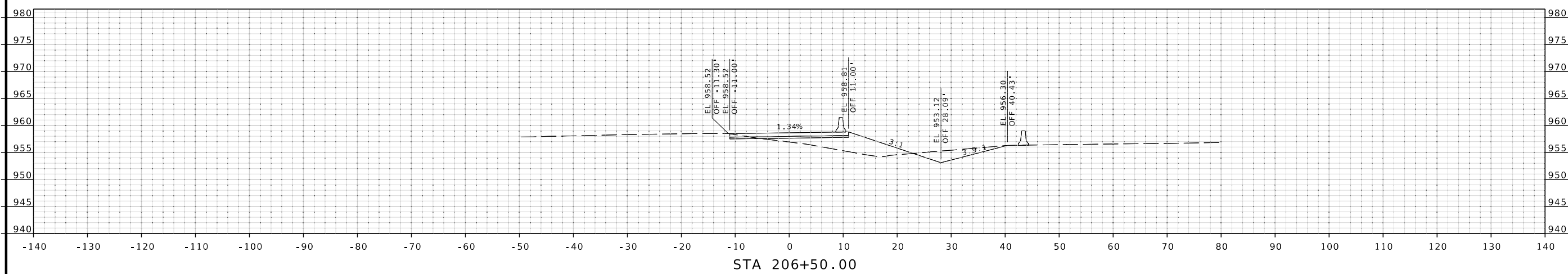
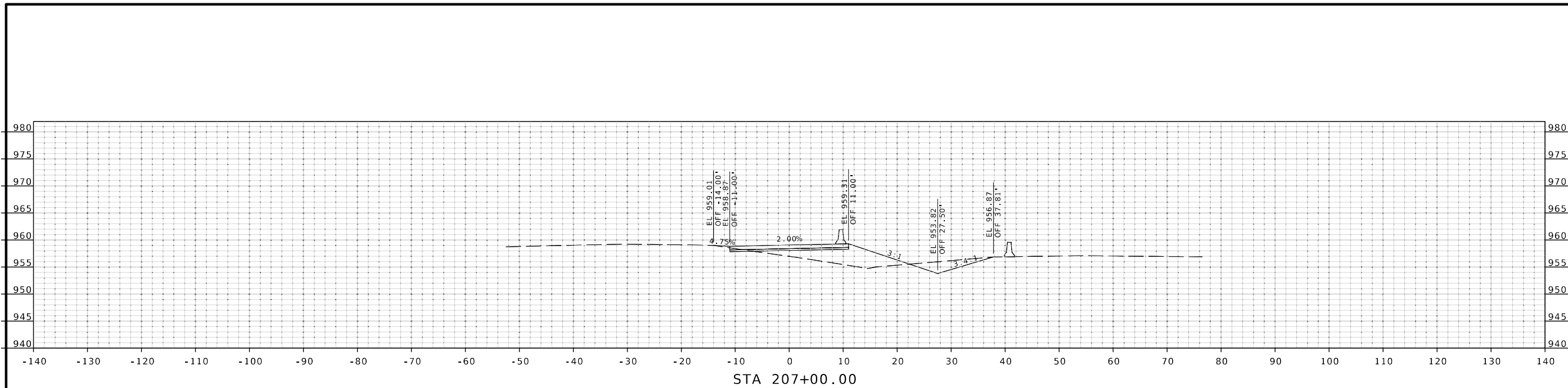
105 WEST CAPITOL
JEFFERSON CITY, MO 65102
1-888-ASK-MODOT (1-888-275-6636)

GBA
9801 Renner Blvd, Ste. 300
Lenexa, KS 66219
913.492.0400
GBAteam.com

GEORGE BUTLER
ASSOCIATES, INC.
PRO. ENGINEER 000133
ARCHITECT 000212
PRO. LAND SURVEYOR 000059

SHELBY P. REYNOLDS
PROFESSIONAL
ENGINEER
PE-2023018931

IF A SEAL IS PRESENT ON THIS SHEET IT HAS BEEN ELECTRONICALLY SEALED AND DATED.
REV.



EB CROSSOVER 2
CROSS SECTIONS
SHEET 20 OF 27



THIS SHEET HAS BEEN
SIGNED, SEALED, AND DATED
ELECTRONICALLY.

DATE PREPARED
3/27/2026

ROUTE 150	STATE MO
--------------	-------------

DISTRICT KC	SHEET NO. 20
----------------	-----------------

COUNTY
JACKSON

JOB NO.
JKU0140

CONTRACT ID.

PROJECT NO.

BRIDGE NO.

DESCRIPTION	DATE

MISSOURI HIGHWAYS AND TRANSPORTATION
COMMISSION

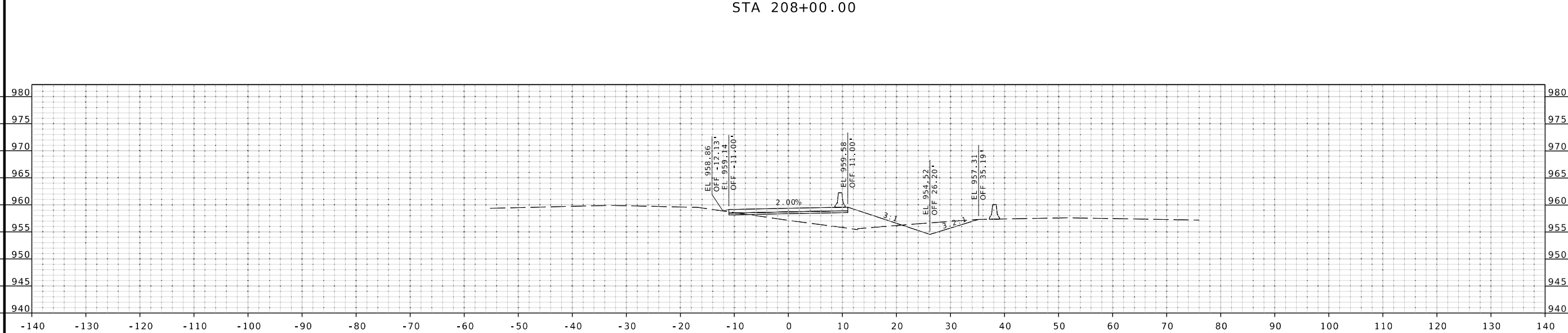
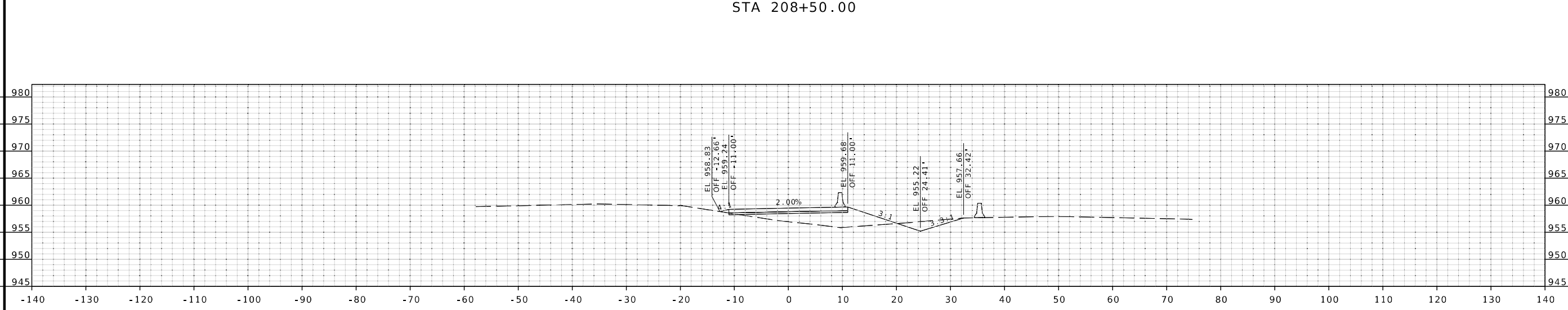
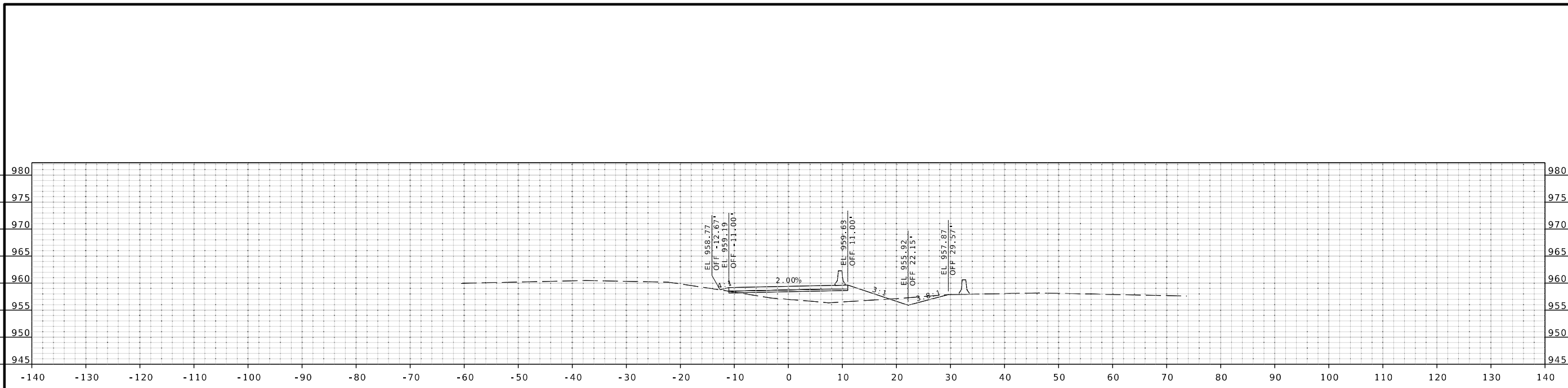
105 WEST CAPITOL
JEFFERSON CITY, MO 65102
1-888-ASK-MODOT (1-888-275-6636)

GBA
9801 Renner Blvd, Ste. 300
Lenexa, KS 66219
913.492.0400
GBAteam.com

GEORGE BUTLER
ASSOCIATES, INC.
PRO. ENGINEER 000133
ARCHITECT 000212
PRO. LAND SURVEYOR 000059

SHELBY P. REYNOLDS
PROFESSIONAL
ENGINEER
PE-2023018931

IF A SEAL IS PRESENT ON THIS SHEET IT HAS BEEN ELECTRONICALLY SEALED AND DATED.

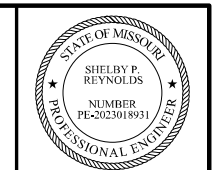


STA 208+50.00

STA 208+00.00

STA 207+50.00

EB CROSSOVER 2
CROSS SECTIONS
SHEET 21 OF 27



THIS SHEET HAS BEEN
SIGNED, SEALED, AND DATED
ELECTRONICALLY.

DATE PREPARED
3/27/2026

ROUTE 150	STATE MO
DISTRICT KC	SHEET NO. 21

COUNTY
JACKSON

JOB NO.
JKU0140

CONTRACT ID.

PROJECT NO.

BRIDGE NO.

DESCRIPTION	DATE

MISSOURI HIGHWAYS AND TRANSPORTATION
COMMISSION

105 WEST CAPITOL
JEFFERSON CITY, MO 65102
1-888-ASK-MODOT (1-888-275-6636)

GBA

9801 Renner Blvd, Ste. 300
Lenexa, KS 66219
913.492.0400
GBAteam.com

GEORGE BUTLER
ASSOCIATES, INC.
PRO. ENGINEER 000133
ARCHITECT 000212
PRO. LAND SURVEYOR 000059

SHELBY P. REYNOLDS
PROFESSIONAL
ENGINEER
PE-2023018931

IF A SEAL IS PRESENT ON THIS SHEET IT HAS BEEN ELECTRONICALLY SEALED AND DATED.

