

EARTHWORK									
SHEET NO.	FROM STA	TO STA	ROADWAY	UNCLASSIFIED EXCAVATION CY	COMPACTING EMBANKMENT CY	INCIDENTAL SELECT GRANULAR BACKFILL FOR STRUCTURAL SYSTEMS CY	SELECT GRANULAR BACKFILL FOR STRUCTURAL SYSTEMS CY	COMPACTING IN CUT STA	REMARKS
XS-2 - XS-53	696+50.29	738+60.00	I-270 EB	5,887	5,158	876	538	42.1	GRANULAR BACKFILL FOR WALL A9498
XS-54 - XS97	696+50.29	734+60.00	I-270 WB	12,207	3,713	2,018	1,267	38.1	GRANULAR BACKFILL FOR WALL A9501
XS-98 - XS107	10+05.00	22+59.61	LILAC AVE	548	6,912			12.5	
			DETENTION BASIN	3,907	245				
SUBTOTAL				22,549	16,028		1,805	92.7	
PAY TOTAL				22,549	16,028		1,805	92.7	

NOTE: COMPACTING EMBANKMENT FOR LILAC AVE HAS BEEN ADJUSTED TO ACCOUNT FOR SELECT GRANULAR BACKFILL THAT WAS USED IN CONSTRUCTION OF I-270 EB AND I-270 WB MSE WALLS.
 NOTE: EXCAVATION ASSOCIATED WITH MSE WALL CONSTRUCTION INCLUDED WITH I-270 EB AND I-270 WB QUANTITIES.

TEMPORARY EROSION CONTROL (PRECONSTRUCTION) - TABLE 1													
SHEET NO.	FROM STA	TO STA	ROADWAY	LOCATION	SILT FENCE LF	TEMPORARY SEEDING ACRE	MULCHING ACRE	ALTERNATE DITCH CHECK LF	CURB INLET CHECK EA	ROCK DITCH CHECK LF	SEDIMENT TRAP ROCK CY	SEDIMENT TRAP EXCAVATION CY	SEDIMENT REMOVAL CY
53, 54	705+33.50	707+88.12	I-270	LT				130					13
54	708+00.20		I-270	CL					1				1
54	708+06.19		I-270	LT						10			1
54	715+19.53	718+19.53	I-270	LT				20					2
54	718+10.52		I-270	CL					1				1
54	720+42.62		I-270	LT						10			1
55	725+75.63	733+82.67	I-270	LT				40					4
55	730+91.20	732+00.88	I-270	RT				20					2
55, 56	732+00.88	734+86.37	I-270	RT				80					8
55, 56	733+82.67	736+85.09	I-270	LT				80					8
55	734+28.13		I-270	CL					1				1
56	734+61.84		I-270	RT					1				1
56	734+62.07		I-270	LT					1				1
56	734+86.37	735+96.65	I-270	RT				10					1
56	735+96.65	736+86.54	I-270	RT				70					7
56	736+85.09	738+84.96	I-270	LT				20					2
56	737+01.77		I-270	RT						10			1
56	739+61.92		I-270	LT						10			1
57	11+27.22		LILAC AVE	LT					1				1
57	11+55.64	12+89.46	LILAC AVE	LT				30					3
57	11+40.08		LILAC AVE	RT				10					1
57	12+94.70		LILAC AVE	RT				10					1
57	20+77.92	21+84.47	LILAC AVE	LT				50					5
57	21+93.26		LILAC AVE	LT						10			
TABLE 1 SUBTOTAL					0	0	0	570	6	50	0	0	67

TEMPORARY EROSION CONTROL (DURING CONSTRUCTION) - TABLE 2													
SHEET NO.	FROM STA	TO STA	ROADWAY	LOCATION	SILT FENCE LF	TEMPORARY SEEDING ACRE	MULCHING ACRE	ALTERNATE DITCH CHECK LF	CURB INLET CHECK EA	ROCK DITCH CHECK LF	SEDIMENT TRAP ROCK CY	SEDIMENT TRAP EXCAVATION CY	SEDIMENT REMOVAL CY
58	696+51.00	703+59.00	I-270	RT	718								72
58	704+20.56		I-270	CL					1				1
58, 59	704+74.66	712+44.43	I-270	LT		0.8	0.8						2
58	705+56.75	705+93.18	I-270	RT				4					2
58, 59	705+56.75	707+95.00	I-270	RT		0.1	0.1						11
58, 59	705+93.18	708+52.45	I-270	RT				22					11
58	706+12.07		I-270	CL					1				1
59	708+00.42		I-270	CL					1				1
59	708+15.00	711+70.00	I-270	RT	364								36
59	709+26.46	711+51.87	I-270	LT				6					3
59	708+52.45	708+66.96	I-270	RT				4					2
59	708+83.28		I-270	RT						10			1
59	709+16.26	711+50.78	I-270	RT				6					3
59	710+64.47		I-270	CL					1				1
59	711+62.11	712+05.93	I-270	RT		0.1	0.1						1
59	712+04.38		I-270	CL					1				1
59	712+79.98	718+78.20	I-270	RT		0.5	0.5						2
59, 60	712+98.08	721+27.98	I-270	LT		1.0	1.0						2
59	713+30.60	717+50.47	I-270	RT				4					2
59	713+47.63		I-270	CL					1				1
59	713+73.51	720+38.13	I-270	LT				8					4
59	715+91.44		I-270	LT					1				1
59	715+91.44		I-270	RT					1				1
TABLE 2 SUBTOTAL					1082	2.5	2.5	54	8	10	0	0	144

SUMMARY OF QUANTITIES
SHEET 3 OF 18

1

THIS MEDIA SHOULD NOT BE CONSIDERED A CERTIFIED DOCUMENT.

DATE PREPARED: 3/25/2026

ROUTE: I-270 STATE: MO

DISTRICT: SL SHEET NO.: 3

COUNTY: ST. LOUIS

JOB NO.: J613020D

CONTRACT ID.:

PROJECT NO.:

BRIDGE NO.:

DATE	DESCRIPTION
6/4/26	EARTHWORK TABLE REVISION

MISSOURI HIGHWAYS AND TRANSPORTATION COMMISSION

MoDOT

105 WEST CAPITOL JEFFERSON CITY, MO 65102
1-888-ASK-MODOT (1-888-275-6636)

HDR Engineering, Inc.
1001 Highlands Plaza Drive
Suite 200
St. Louis, MO 63110-1337
314-425-8300
Certificate of Authority: 000856

IF A SEAL IS PRESENT ON THIS SHEET IT HAS BEEN ELECTRONICALLY SEALED AND DATED.

"THIS MEDIA SHOULD NOT BE CONSIDERED A CERTIFIED DOCUMENT."

DATE PREPARED
3/25/2026

ROUTE STATE
I-270 MO

DISTRICT SHEET NO.
SL 3

COUNTY
ST. LOUIS

JOB NO.
J613020D

CONTRACT ID.

PROJECT NO.

BRIDGE NO.

DATE	DESCRIPTION
6/4/26	ALT. PVMT. TABLE REVISION

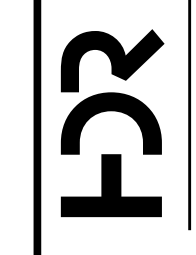
MISSOURI HIGHWAYS AND TRANSPORTATION COMMISSION



105 WEST CAPITOL
JEFFERSON CITY, MO 65102
1-888-ASK-MODOT (1-888-275-6636)

HDR Engineering, Inc.

1001 Highlands Plaza Drive
Suite 200
St. Louis, MO 63110-1337
314-425-8300
Certificate of Authority: 000856



IF A SEAL IS PRESENT ON THIS SHEET IT HAS BEEN ELECTRONICALLY SEALED AND DATED.

ALTERNATE A (ASPHALT) - PAVEMENT AND BASE - I-270 MAINLINE

SHEET NO.	FROM STA	TO STA	ROADWAY	DIRECTION	LOCATION	14.5 INCH SP125BSM (PG76-22) SY	FURNISHING ROCK BASE (12 INCH) SY	PLACING ROCK BASE (12 INCH) SY	REMARKS
7	696+75.71	703+59.31	I-270	EASTBOUND	RT	643.1	643	643	MAINLINE
7	702+04.00	707+50.00	I-270	EASTBOUND	RT	851.3	851	851	MAINLINE
7	702+04.00	707+50.00	I-270	WESTBOUND	LT	850.4	850	850	MAINLINE
7	704+13.45	705+57.56	I-270	EASTBOUND	RT	140.3	140	140	GORE
8	707+50.00	721+00.00	I-270	EASTBOUND	RT	2102.0	2102	2102	MAINLINE
8	707+50.00	721+00.00	I-270	WESTBOUND	LT	2098.0	2098	2098	MAINLINE
9	721+00.00	734+50.00	I-270	EASTBOUND	RT	2100.0	2100	2100	MAINLINE
9	721+00.00	734+50.00	I-270	WESTBOUND	LT	2100.0	2100	2100	MAINLINE
10	734+50.00	734+60.00	I-270	EASTBOUND	RT	15.6	16	16	MAINLINE
10	734+50.00	734+60.00	I-270	WESTBOUND	LT	15.6	16	16	MAINLINE
SUBTOTAL						10916.3	10916	10916	
CONCRETE PAVEMENT SUBTOTAL							1115	1115	
ALTERNATE C, D SUBTOTAL							3558	3558	
ALTERNATE E, F SUBTOTAL							662	662	
PAY TOTAL						10916.3	16251	16251	

1

1

ALTERNATE B (CONCRETE) - PAVEMENT AND BASE - I-270 MAINLINE

SHEET NO.	FROM STA	TO STA	ROADWAY	DIRECTION	LOCATION	11" PCCP SY	FURNISHING ROCK BASE (12 INCH) SY	PLACING ROCK BASE (12 INCH) SY	REMARKS
7	696+75.71	703+59.31	I-270	EASTBOUND	RT	643.1	643	643	MAINLINE
7	702+04.00	707+50.00	I-270	EASTBOUND	RT	851.3	851	851	MAINLINE
7	702+04.00	707+50.00	I-270	WESTBOUND	LT	850.4	850	850	MAINLINE
7	704+13.45	705+57.56	I-270	EASTBOUND	RT	140.3	140	140	GORE
8	707+50.00	721+00.00	I-270	EASTBOUND	RT	2102.0	2102	2102	MAINLINE
8	707+50.00	721+00.00	I-270	WESTBOUND	LT	2098.0	2098	2098	MAINLINE
9	721+00.00	734+50.00	I-270	EASTBOUND	RT	2100.0	2100	2100	MAINLINE
9	721+00.00	734+50.00	I-270	WESTBOUND	LT	2100.0	2100	2100	MAINLINE
10	734+50.00	734+60.00	I-270	EASTBOUND	RT	15.6	16	16	MAINLINE
10	734+50.00	734+60.00	I-270	WESTBOUND	LT	15.6	16	16	MAINLINE
SUBTOTAL						10916.3	10916	10916	
CONCRETE PAVEMENT SUBTOTAL							1115	1115	
ALTERNATE C, D SUBTOTAL							3558	3558	
ALTERNATE E, F SUBTOTAL							662	662	
PAY TOTAL						10916.3	16251	16251	

1

1

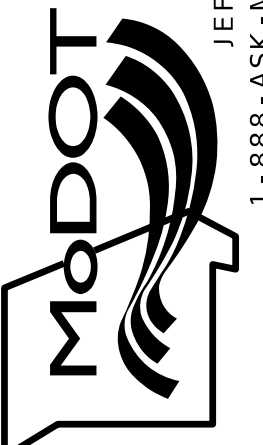
SUMMARY OF QUANTITIES
SHEET 5 OF 18

"THIS MEDIA SHOULD NOT BE CONSIDERED A CERTIFIED DOCUMENT."

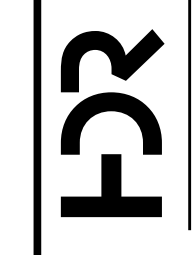
DATE PREPARED
3/25/2026
ROUTE STATE
I - 270 MO
DISTRICT SHEET NO.
SL 3
COUNTY
ST. LOUIS
JOB NO.
J613020D
CONTRACT ID.

PROJECT NO.
BRIDGE NO.

DATE	DESCRIPTION
6/4/26	ALT. PVMT. TABLE REVISION

MISSOURI HIGHWAYS AND TRANSPORTATION COMMISSION

 105 WEST CAPITOL JEFFERSON CITY, MO 65102
 1-888-ASK-MODOT (1-888-275-6636)

HDR Engineering, Inc.
 1001 Highlands Plaza Drive
 Suite 200
 St. Louis, MO 63110-1337
 314-425-8300
 Certificate of Authority: 000856



1001 Highlands Plaza Drive
 Suite 200
 St. Louis, MO 63110-1337
 314-425-8300
 Certificate of Authority: 000856

IF A SEAL IS PRESENT ON THIS SHEET IT HAS BEEN ELECTRONICALLY SEALED AND DATED.

ALTERNATE C (ASPHALT) - PAVEMENT AND BASE - I-270 FULL DEPTH SHOULDERS

SHEET NO.	FROM STA	TO STA	ROADWAY	DIRECTION	LOCATION	14.5 INCH SP125BSM (PG76-22) SY	FURNISHING ROCK BASE (12 INCH) SY	PLACING ROCK BASE (12 INCH) SY	BITUMINOUS SHOULDER RUMBLE STRIP STA	REMARKS
7	696+50.29	703+59.31	I-270	EASTBOUND	OUTSIDE	470.8	471	471		
7	702+04.00	707+50.00	I-270	EASTBOUND	INSIDE	194.7	195	195		
7	702+04.00	707+50.00	I-270	WESTBOUND	INSIDE	194.7	195	195		
8	707+50.00	721+00.00	I-270	EASTBOUND	INSIDE	525.1	525	525		
8	707+50.00	721+00.00	I-270	WESTBOUND	INSIDE	524.9	525	525		
9	721+00.00	734+50.00	I-270	EASTBOUND	INSIDE	525.0	525	525		
9	721+00.00	734+50.00	I-270	WESTBOUND	INSIDE	525.0	525	525		
9	731+95.00	734+50.00	I-270	EASTBOUND	OUTSIDE	133.1	133	133		
10	734+50.00	734+60.00	I-270	EASTBOUND	INSIDE	3.9	4	4		
10	734+50.00	738+60.00	I-270	EASTBOUND	OUTSIDE	455.6	456	456		
10	734+50.00	734+60.00	I-270	WESTBOUND	INSIDE	3.9	4	4		
7	702+04.00	707+50.00	I-270	WESTBOUND	INSIDE				5.5	
7	702+04.00	707+50.00	I-270	EASTBOUND	INSIDE				5.5	
8	707+50.00	721+00.00	I-270	EASTBOUND	INSIDE				13.5	
8	707+50.00	721+00.00	I-270	WESTBOUND	INSIDE				13.5	
9	721+00.00	734+50.00	I-270	EASTBOUND	INSIDE				13.5	
9	721+00.00	734+50.00	I-270	WESTBOUND	INSIDE				13.5	
9	733+72.00	734+50.00	I-270	EASTBOUND	OUTSIDE				0.8	
10	734+50.00	738+60.00	I-270	EASTBOUND	OUTSIDE				4.1	
10	734+50.00	734+60.00	I-270	EASTBOUND	INSIDE				0.1	
10	734+50.00	734+60.00	I-270	WESTBOUND	INSIDE				0.1	
SUBTOTAL						3556.7	3558	3558	70.1	
PAY TOTAL						3556.7			70.1	

1

ALTERNATE D (CONCRETE) - PAVEMENT AND BASE - I-270 FULL DEPTH SHOULDERS

SHEET NO.	FROM STA	TO STA	ROADWAY	DIRECTION	LOCATION	11" PCCP SY	FURNISHING ROCK BASE 12 INCH SY	PLACING ROCK BASE 12 INCH SY	PORTLAND CEMENT CONCRETE SHOULDER RUMBLE STRIP STA	REMARKS
7	696+50.29	703+59.31	I-270	EASTBOUND	OUTSIDE	470.8	471	471		
7	702+04.00	707+50.00	I-270	EASTBOUND	INSIDE	194.7	195	195		
7	702+04.00	707+50.00	I-270	WESTBOUND	INSIDE	194.7	195	195		
8	707+50.00	721+00.00	I-270	EASTBOUND	INSIDE	525.1	525	525		
8	707+50.00	721+00.00	I-270	WESTBOUND	INSIDE	524.9	525	525		
9	721+00.00	734+50.00	I-270	EASTBOUND	INSIDE	525.0	525	525		
9	721+00.00	734+50.00	I-270	WESTBOUND	INSIDE	525.0	525	525		
9	731+95.00	734+50.00	I-270	EASTBOUND	OUTSIDE	133.1	133	133		
10	734+50.00	734+60.00	I-270	EASTBOUND	INSIDE	3.9	4	4		
10	734+50.00	734+60.00	I-270	WESTBOUND	INSIDE	3.9	4	4		
10	734+50.00	738+60.00	I-270	EASTBOUND	OUTSIDE	455.6	456	456		
7	702+04.00	707+50.00	I-270	WESTBOUND	INSIDE				5.5	
7	702+04.00	707+50.00	I-270	EASTBOUND	INSIDE				5.5	
8	707+50.00	721+00.00	I-270	EASTBOUND	INSIDE				13.5	
8	707+50.00	721+00.00	I-270	WESTBOUND	INSIDE				13.5	
9	721+00.00	734+50.00	I-270	EASTBOUND	INSIDE				13.5	
9	721+00.00	734+50.00	I-270	WESTBOUND	INSIDE				13.5	
9	733+72.00	734+50.00	I-270	EASTBOUND	OUTSIDE				0.8	
10	734+50.00	738+60.00	I-270	EASTBOUND	OUTSIDE				4.1	
10	734+50.00	734+60.00	I-270	EASTBOUND	INSIDE				0.1	
10	734+50.00	734+60.00	I-270	WESTBOUND	INSIDE				0.1	
SUBTOTAL						3556.7	3558	3558	70.1	
PAY TOTAL						3556.7			70.1	

1

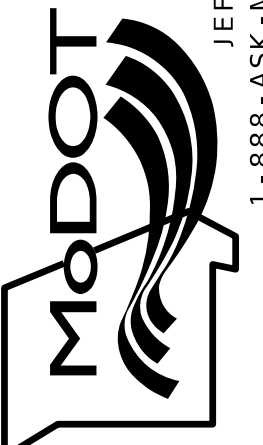
SUMMARY OF QUANTITIES
SHEET 6 OF 18

"THIS MEDIA SHOULD NOT BE CONSIDERED A CERTIFIED DOCUMENT."

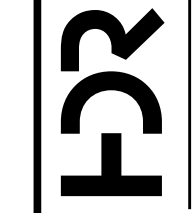
DATE PREPARED
3/25/2026
ROUTE STATE
I - 270 MO
DISTRICT SHEET NO.
SL 3
COUNTY
ST. LOUIS
JOB NO.
J613020D
CONTRACT ID.

PROJECT NO.
BRIDGE NO.

DATE	DESCRIPTION
6/4/26	ALT. P.WMT. TABLE REVISION

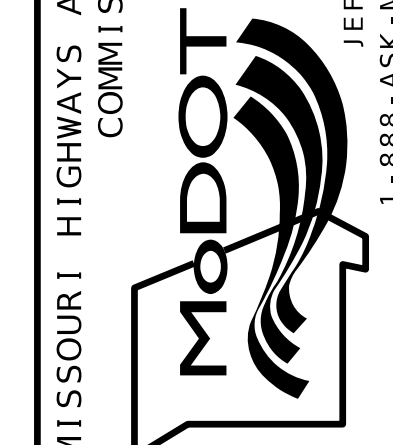
MISSOURI HIGHWAYS AND TRANSPORTATION COMMISSION

 105 WEST CAPITOL JEFFERSON CITY, MO 65102
 1-888-ASK-MODOT (1-888-275-6636)

HDR Engineering, Inc.
 1001 Highlands Plaza Drive
 Suite 200
 St. Louis, MO 63110-1337
 314-425-8300
 Certificate of Authority: 000856



HDR

HDR



MISSOURI HIGHWAYS AND TRANSPORTATION COMMISSION
 105 WEST CAPITOL JEFFERSON CITY, MO 65102
 1-888-ASK-MODOT (1-888-275-6636)

DATE	DESCRIPTION
6/4/26	ALT. P.WMT. TABLE REVISION

PROJECT NO.
BRIDGE NO.

DATE PREPARED
3/25/2026
ROUTE STATE
I - 270 MO
DISTRICT SHEET NO.
SL 3
COUNTY
ST. LOUIS
JOB NO.
J613020D
CONTRACT ID.

"THIS MEDIA SHOULD NOT BE CONSIDERED A CERTIFIED DOCUMENT."

IF A SEAL IS PRESENT ON THIS SHEET IT HAS BEEN ELECTRONICALLY SEALED AND DATED.

ALTERNATE G (ASPHALT) - PAVEMENT AND BASE - LILAC AVE

SHEET NO.	FROM STA	TO STA	ROADWAY	DIRECTION	LOCATION	11.5 INCH SP125CLP (PG 70-22) SY	6" TYPE 5 AGGREGATE FOR BASE SY	CONCRETE CURB (6 IN. HEIGHT AND UNDER) TYPE S LF	REMARKS
11	13+80.00	14+38.78	LILAC AVE	NB/SB	LT/RT	391.8	392		
11	16+59.03	17+25.00	LILAC AVE	NB/SB	LT/RT	440.1	440		
11	13+66.07	14+38.78	LILAC AVE	NB	LT			73	
11	13+78.43	14+38.78	LILAC AVE	SB	RT			60	
11	16+59.77	17+10.92	LILAC AVE	NB	LT			51	
11	16+59.77	17+28.55	LILAC AVE	SB	RT			69	
SUBTOTAL						831.9	832	253	
CURB & GUTTER SUBTOTAL							300		
PAY TOTAL						831.9	1132	253	

1

1

ALTERNATE H (CONCRETE) - PAVEMENT AND BASE - LILAC AVE

SHEET NO.	FROM STA	TO STA	ROADWAY	DIRECTION	LOCATION	11" PCCP SY	6" TYPE 5 AGGREGATE FOR BASE SY	INTEGRAL CURB (6 IN. HEIGHT AND UNDER) TYPE A LF	REMARKS
11	13+80.00	14+38.78	LILAC AVE	NB/SB	LT/RT	391.8	392		
11	16+59.03	17+25.00	LILAC AVE	NB/SB	LT/RT	440.1	440		
11	13+66.07	14+38.78	LILAC AVE	NB	LT			73	
11	13+78.43	14+38.78	LILAC AVE	SB	RT			60	
11	16+59.77	17+10.92	LILAC AVE	NB	LT			51	
11	16+59.77	17+28.55	LILAC AVE	SB	RT			69	
SUBTOTAL						831.9	832	253	
CURB & GUTTER SUBTOTAL							300		
PAY TOTAL						831.9	1132	253	

1

1

SUMMARY OF QUANTITIES
SHEET 8 OF 18

CURB AND GUTTER									
SHEET NO.	FROM STA	TO STA	ROADWAY	LOCATION	CONCRETE GUTTER TYPE A LF	MODIFIED CONCRETE GUTTER TYPE B LF	CURB AND GUTTER TYPE B LF	6" TYPE 5 AGGREGATE FOR BASE SY	REMARKS
8	711+62.11	713+30.47	I-270	A9498				168	ON MSE WALL
8	711+59.70	713+65.73	I-270	A9501				206	ON MSE WALL
9	722+77.28	730+60.00	I-270	LT	783				ON TYPE D BARRIER
11	10+05.00	10+39.65	LILAC AVE	LT			35	15	
11	11+26.41	12+82.40	LILAC AVE	LT			156	49	
11	11+45.49	12+94.58	LILAC AVE	RT			149	48	
11	13+66.07	14+38.78	LILAC AVE	LT					REMOVED
11	13+78.43	14+38.78	LILAC AVE	RT					REMOVED
11	16+59.77	17+10.92	LILAC AVE	LT					REMOVED
11	16+59.77	17+28.55	LILAC AVE	RT					REMOVED
11	18+02.90	19+81.53	LILAC AVE	LT			179	56	
11	18+07.10	19+97.42	LILAC AVE	RT			190	61	
11	20+81.54	21+92.94	LILAC AVE	LT			111	35	
11	20+81.36	21+99.02	LILAC AVE	RT			118	36	
SUBTOTAL					783	374	938	300	
PAY TOTAL					783	374	938		

SAWCUTS NEEDED FOR INSTALLATION OF CURB AND GUTTER ARE INCIDENTAL TO THE PAY ITEM FOR CURB AND GUTTER.

1

GUARDRAIL										
SHEET NO.	FROM STA	TO STA	LOCATION	ROADWAY	MGS GUARDRAIL LF	MGS BRIDGE APPROACH TRANSITION (REGULAR/NO CURB) EA	MGS VERTICAL CONC. BARRIER TRANSITION EA	TYPE A CRASHWORTHY END TERMINAL (MASH) EA	MGS END ANCHOR EA	SHAPING SLOPES, CLASS III 100F
7	696+50.29	703+58.86	RT	I-270	675	1				
7, 8	706+10.00	713+38.75	RT	I-270	675			1	1	
8	711+51.00	715+84.73	LT	I-270	375			1	1	
9	730+60.00	732+40.00	LT	I-270	12.5		1	1		
9, 10	729+45.00	746+04.76	RT	I-270	1600			1	1	17
11	13+75.67	14+64.31	LT	LILAC AVE	12.5	1		1		
11	13+80.30	14+76.69	RT	LILAC AVE	12.5	1		1		
11	16+21.85	17+10.49	LT	LILAC AVE	12.5	1		1		
11	16+34.24	17+22.87	RT	LILAC AVE	12.5	1		1		
SUBTOTAL					3388	5	1	8	3	17
PAY TOTAL					3388	5	1	8	3	17

NOTE: ALL GRADING FOR MASH CWETS, AS PAID FOR WITH MODIFIED SHAPING SLOPES - CLASS III, SHALL USE ALTERNATE GRADING LIMITS AS SHOWN IN THE STD. PLANS.

CONCRETE APPROACH PAVEMENT						
SHEET NO.	FROM STA	TO STA	ROADWAY	LOCATION	CONC. APPROACH PAVEMENT SY	TYPE 5 AGGREGATE FOR BASE (4 IN. THICK) SY
11	14+38.78	14+59.00	LILAC AVE	RT/LT	134.9	135
11	16+39.54	16+59.77	LILAC AVE	RT/LT	134.9	135
SUBTOTAL					269.8	270
PAY TOTAL					269.8	

NOTE: COST OF FURNISHING AND PLACEMENT OF 4" TYPE 5 AGGREGATE BASE AND 3/4" JOINT FILLER IS INCLUDED IN THE CONTRACT UNIT PRICE FOR CONCRETE APPROACH PAVEMENT.

SIGN MOUNTING BRACKET				
SHEET NO.	STA	ROADWAY	LOCATION	SIGN MOUNTING BRACKET FOR BARRIER WALL EA
108	723+25.00	I-270	LT	1
108	724+42.00	I-270	LT	1
SUBTOTAL				2
PAY TOTAL				2

REMOVAL AND RELOCATION OVERHEAD SIGNS				
SHEET NO.	ROADWAY	LOCATION	REMOVAL AND RELOCATION OF OVERHEAD SIGNS EA	REMARKS
107	I-270 WB	LILAC BRIDGE	1	SIGN NO. 18
107	I-270 EB	LILAC BRIDGE	1	SIGN NO. 10
SUBTOTAL			2	
PAY TOTAL			2	

"THIS MEDIA SHOULD NOT BE CONSIDERED A CERTIFIED DOCUMENT."

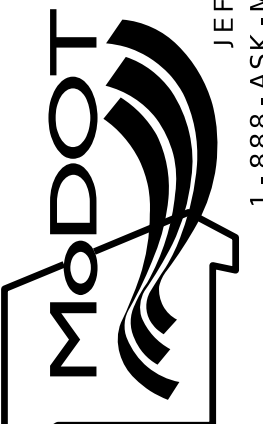
DATE PREPARED
3/25/2026
ROUTE I-270 STATE MO
DISTRICT SL SHEET NO. 3

COUNTY
ST. LOUIS
JOB NO.
J613020D
CONTRACT ID.

PROJECT NO.
BRIDGE NO.

DATE	DESCRIPTION	REVISION
6/4/26	1	Δ CURB & GUTTER TABLE

MISSOURI HIGHWAYS AND TRANSPORTATION COMMISSION

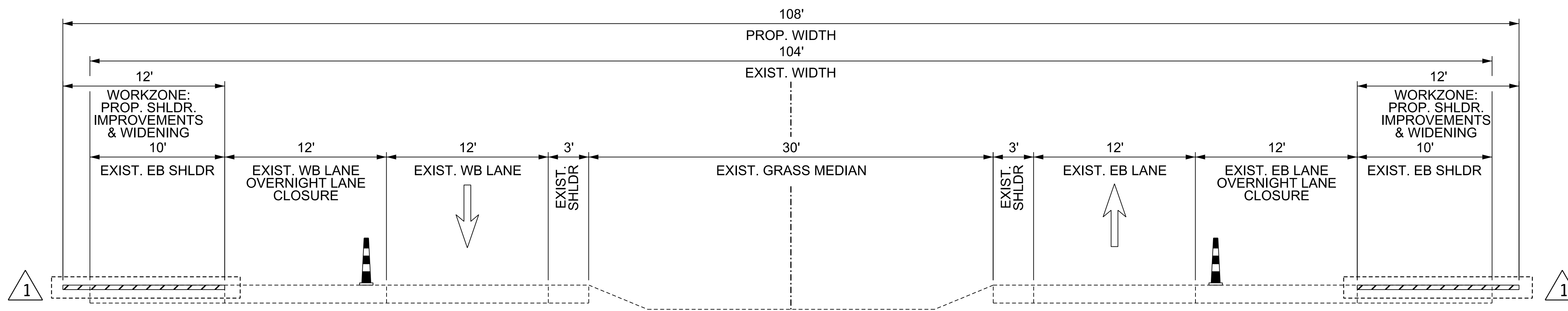


105 WEST CAPITOL
JEFFERSON CITY, MO 65102
1-888-ASK-MODOT (1-888-275-6636)

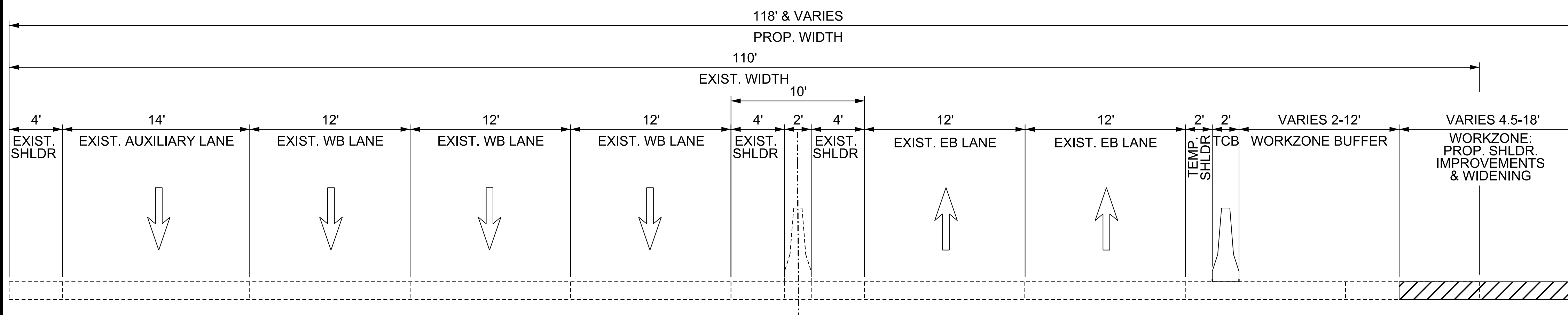
HDR Engineering, Inc.
1001 Highlands Plaza Drive
Suite 200
St. Louis, MO 63110-1337
314-425-8300
Certificate of Authority: 000856

SUMMARY OF QUANTITIES
SHEET 10 OF 18

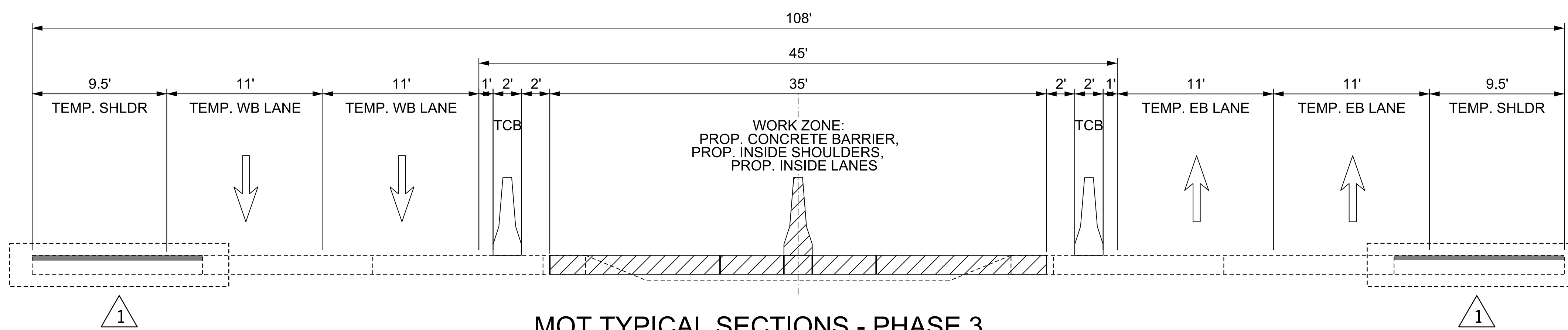
IF A SEAL IS PRESENT ON THIS SHEET IT HAS BEEN ELECTRONICALLY SEALED AND DATED.



MOT TYPICAL SECTIONS - PHASE 0



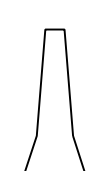
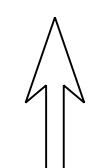


MOT TYPICAL SECTIONS - PHASE 1



MOT TYPICAL SECTIONS - PHASE 3

LEGEND

-  WORK ZONE
-  PREVIOUSLY CONSTRUCTED
-  TEMPORARY CONCRETE BARRIER (TCB)
-  DIRECTION OF TRAFFIC

TRAFFIC CONTROL PLAN
TYPICAL SECTIONS
SHEET 1 OF 1

HORNER SHIFRIN

401 S. 18TH ST., STE. 400 ST. LOUIS, MO 63103
314-531-4321 • FAX 314-531-6986
WWW.HORNERSHIFRIN.COM
DISCIPLINE: PROFESSIONAL ENGINEERING
CERTIFICATE OF AUTHORITY: 000159
EXPIRATION DATE: DECEMBER 31, 2026

MISSOURI HIGHWAYS AND TRANSPORTATION COMMISSION

MoDOT

105 WEST CAPITOL
JEFFERSON CITY, MO 65102
1-888-ASK-MODOT (1-888-275-6636)

DATE PREPARED 6/9/2026	
ROUTE I-270	STATE MO
DISTRICT STL	SHEET NO. 24
COUNTY ST. LOUIS	
JOB NO. J613020D	
CONTRACT ID.	
PROJECT NO.	
BRIDGE NO.	

"THIS MEDIA SHOULD NOT BE CONSIDERED A CERTIFIED DOCUMENT."

IF A SEAL IS PRESENT ON THIS SHEET IT HAS BEEN ELECTRONICALLY SEALED AND DATED.

REMOVAL OF IMPROVEMENTS - TABLE 1						
SHEET NO.	FROM STA	TO STA	ROADWAY	LOCATION	DESCRIPTION	REMARKS
9	604+44	605+84	I-270	LT	GUARDRAIL	140 LF
9	607+29	609+17	I-270	RT	GUARDRAIL	188 LF
9	607+49	609+16	I-270	LT	GUARDRAIL	167 LF
9	611+20	614+41	I-270	RT	GUARDRAIL	321 LF
9	611+20	614+46	I-270	LT	GUARDRAIL	326 LF
11	632+42	633+89	I-270	LT	GUARDRAIL	147 LF
11	641+39	642+17	I-270	RT	GUARDRAIL	78 LF
11	640+97	641+26	I-270	RT	GUARDRAIL	29 LF
11	641+10	641+25	I-270	RT	BARRIER	15 LF
12, 13	655+85	659+67	I-270	LT	GUARDRAIL	382 LF
13	658+28	659+75	I-270	RT	GUARDRAIL	147 LF
13	661+45	676+15	I-270	LT	GUARDRAIL	1470 LF
13	661+46	664+31	I-270	RT	GUARDRAIL	285 LF
16	524+91	526+29	MO 367	RT	GUARDRAIL	138 LF
16	524+59	526+70	MO 367	CL	BARRIER	211 LF
17	12+11	12+45	BELLEFONTAINE RD	RT	GUARDRAIL	34 LF
17	12+08	12+52	BELLEFONTAINE RD	LT	GUARDRAIL	44 LF
17	12+52	13+88	BELLEFONTAINE RD	LT	BARRIER	136 LF
17	13+88	14+52	BELLEFONTAINE RD	LT	GUARDRAIL	64 LF
17	12+45	13+76	BELLEFONTAINE RD	RT	BARRIER	131 LF
17	9+78	11+32	BELLEFONTAINE RD	RT	CURB	154 LF
17	10+56	11+46	BELLEFONTAINE RD	LT	CURB	90 LF
9, 10	598+34	606+77	I-270	LT	PAVEMENT REMOVAL	1040.3 SY
9, 10	601+70	609+20	I-270	RT	PAVEMENT REMOVAL	1043 SY
10	605+70	609+20	I-270	LT	PAVEMENT REMOVAL	1915.9 SY
10	605+70	609+20	I-270	RT	PAVEMENT REMOVAL	1400.7 SY
10	611+08	614+75	I-270	LT	PAVEMENT REMOVAL	1814.4 SY
10	611+08	614+75	I-270	RT	PAVEMENT REMOVAL	1469.3 SY
10, 11	611+08	620+53	I-270	RT	PAVEMENT REMOVAL	1067.8 SY
10, 11	613+02	620+11	I-270	LT	PAVEMENT REMOVAL	729 SY
11, 12	622+47	648+00	I-270	LT	PAVEMENT REMOVAL	2712.8 SY
11, 12	627+57	644+61	I-270	RT	PAVEMENT REMOVAL	2136.1 SY
12	648+41	655+85	I-270	LT	PAVEMENT REMOVAL	831.4 SY
12, 13	653+29	669+58	I-270	RT	PAVEMENT REMOVAL	798.4 SY
12, 13	655+70	659+54	I-270	LT	PAVEMENT REMOVAL	1718.6 SY
12, 13	655+70	659+57	I-270	RT	PAVEMENT REMOVAL	1734.2 SY
12, 13	655+85	659+50	I-270	LT	PAVEMENT REMOVAL	940.6 SY
13, 14, 15	661+80	685+98	I-270	LT	PAVEMENT REMOVAL	2560.1 SY
13	661+80	666+20	I-270	LT	PAVEMENT REMOVAL	1971.4 SY
13	661+84	666+20	I-270	RT	PAVEMENT REMOVAL	1955.7 SY
13	661+87	667+65	I-270	RT	PAVEMENT REMOVAL	750 SY
13, 14	668+80	672+10	I-270	RT	PAVEMENT REMOVAL	2084.1 SY
9	0+72	9+10	RAMP 8-D	RT/LT	PAVEMENT REMOVAL	2084.1 SY
16	521+53	530+34	MO 367	RT	PAVEMENT REMOVAL	1538.6 SY
16	524+59	526+70	MO 367	CL	PAVEMENT REMOVAL	120.8 SY
17	12+06	14+54	BELLEFONTAINE RD	LT	PAVEMENT REMOVAL	245.8 SY
17	12+37	14+42	BELLEFONTAINE RD	RT	PAVEMENT REMOVAL	124.7 SY
17	11+27	11+58	BELLEFONTAINE RD	RT	MEDIAN ISLAND PAVEMENT	41.2 SY
17	11+27	11+58	BELLEFONTAINE RD	RT	MEDIAN ISLAND	31.5 SY
17	14+75	14+93	BELLEFONTAINE RD	RT	MEDIAN ISLAND PAVEMENT	25.6 SY
17	14+75	14+93	BELLEFONTAINE RD	RT	MEDIAN ISLAND	31.5 SY
8, 9	593+96	609+20	I-270	CL	TYPE C BARRIER	1524 LF
9	611+07	614+75	I-270	CL	TYPE C BARRIER	368 LF
12, 13	655+70	659+54	I-270	CL	TYPE C BARRIER	384 LF
13, 14	661+84	676+35	I-270	CL	TYPE C BARRIER	1451 LF
TOTAL 1 LUMP SUM						1

REMOVAL OF IMPROVEMENTS - TABLE 2						
SHEET NO.	FROM STA	TO STA	ROADWAY	LOCATION	DESCRIPTION	REMARKS
16	525+12	526+24	MO 367	LT	SLOPE PROTECTION	696.3 SY
16	525+10	526+24	MO 367	RT	SLOPE PROTECTION	510.5 SY
17	12+12	13+88	BELLEFONTAINE RD	LT	SLOPE PROTECTION	1079.2 SY
17	11+96	13+74	BELLEFONTAINE RD	RT	SLOPE PROTECTION	848.1 SY
17	12+07	14+42	BELLEFONTAINE RD	RT	SIDEWALK	166.4 SY
8	598+34		I-270	LT	FULL DEPTH SAWCUT	12 LF
8, 9	598+34	604+70	I-270	LT	FULL DEPTH SAWCUT	636 LF
8	601+70		I-270	RT	FULL DEPTH SAWCUT	12 LF
8, 9	601+70	604+70	I-270	RT	FULL DEPTH SAWCUT	300 LF
9	604+70		I-270	LT	SAWCUT	41 LF
9	604+70		I-270	RT	SAWCUT	41 LF
9	615+75		I-270	LT	SAWCUT	41 LF
9	615+75		I-270	RT	SAWCUT	41 LF
9, 10	615+75	620+11	I-270	LT	FULL DEPTH SAWCUT	436 LF
10	620+11		I-270	RT	FULL DEPTH SAWCUT	13 LF
9, 10	615+75	620+53	I-270	RT	FULL DEPTH SAWCUT	478 LF
10	619+81	620+53	I-270	RT	FULL DEPTH SAWCUT	72 LF
10	622+47		I-270	LT	FULL DEPTH SAWCUT	12 LF
10, 11	622+47	634+75	I-270	LT	FULL DEPTH SAWCUT	1228 LF
10	627+57		I-270	RT	FULL DEPTH SAWCUT	11 LF
10, 11, 12	627+57	648+00	I-270	RT	FULL DEPTH SAWCUT	2043 LF
10	634+75		I-270	LT	FULL DEPTH SAWCUT	11 LF
12	648+00		I-270	RT	FULL DEPTH SAWCUT	20 LF
12	648+41		I-270	LT	FULL DEPTH SAWCUT	10 LF
12	648+41	654+70	I-270	LT	FULL DEPTH SAWCUT	629 LF
12	653+29		I-270	RT	FULL DEPTH SAWCUT	16 LF
12	653+29	654+70	I-270	RT	FULL DEPTH SAWCUT	141 LF
12	654+70		I-270	LT	SAWCUT	41 LF
12	654+70		I-270	RT	SAWCUT	41 LF
12	655+85		I-270	LT	FULL DEPTH SAWCUT	26 LF
13	667+20		I-270	LT	SAWCUT	41 LF
13	667+20		I-270	RT	SAWCUT	41 LF
13, 14, 15	667+20	685+98	I-270	LT	FULL DEPTH SAWCUT	1878 LF
13	667+20	667+65	I-270	RT	FULL DEPTH SAWCUT	45 LF
13	667+65		I-270	RT	FULL DEPTH SAWCUT	12 LF
13	668+80		I-270	RT	FULL DEPTH SAWCUT	7 LF
13, 14	668+80	672+10	I-270	RT	FULL DEPTH SAWCUT	330 LF
14	672+10		I-270	RT	FULL DEPTH SAWCUT	8 LF
15	685+98		I-270	LT	FULL DEPTH SAWCUT	10 LF
16	521+53		MO 367	RT	FULL DEPTH SAWCUT	14 LF
16	521+53	532+41	MO 367	RT	FULL DEPTH SAWCUT	1088 LF
16	524+59		MO 367	RT/LT	FULL DEPTH SAWCUT	8 LF
16	524+59	526+70	MO 367	LT	FULL DEPTH SAWCUT	211 LF
16	524+59	526+70	MO 367	RT	FULL DEPTH SAWCUT	211 LF
16	526+70		MO 367	RT/LT	FULL DEPTH SAWCUT	8 LF
16	532+41		MO 367	RT	FULL DEPTH SAWCUT	7 LF
9	3+42		RAMP 8-D	RT/LT	FULL DEPTH SAWCUT	31 LF
9	7+67		RAMP 8-D	RT/LT	FULL DEPTH SAWCUT	30 LF
17	10+86		BELLEFONTAINE RD	RT/LT	SAWCUT	87 LF
17	18+50		BELLEFONTAINE RD	RT/LT	SAWCUT	49 LF
17	661+89		DUNN RD	RT/LT	SAWCUT	54 LF
17	664+24		DUNN RD	RT/LT	SAWCUT	51 LF
17	17+25		RAMP 2	RT/LT	SAWCUT	51 LF
17	1+13		RAMP 4	RT/LT	SAWCUT	30 LF
9-15			I-270	RT	RUMBLE STRIPS	80 STA
TOTAL 1 LUMP SUM						

SUMMARY OF QUANTITIES
SHEET 1 OF 19

HDR HDR Engineering, Inc.
1001 Highlands Plaza Drive
Suite 200
St. Louis, MO 63110-1337
314-425-8300
Certificate of Authority: 000856

MISSOURI HIGHWAYS AND TRANSPORTATION COMMISSION
MoDOT
105 WEST CAPITOL
JEFFERSON CITY, MO 65102
1-888-ASK-MODOT (1-888-275-6636)

DATE PREPARED
3/25/2026
ROUTE I-270 STATE MO
DISTRICT SL SHEET NO. 3
COUNTY ST. LOUIS
JOB NO. JSL0021
CONTRACT ID.
PROJECT NO.
BRIDGE NO.

"THIS MEDIA SHOULD NOT BE CONSIDERED A CERTIFIED DOCUMENT."

IF A SEAL IS PRESENT ON THIS SHEET IT HAS BEEN ELECTRONICALLY SEALED AND DATED.

"THIS MEDIA SHOULD NOT BE CONSIDERED A CERTIFIED DOCUMENT."

DATE PREPARED
3/25/2026

ROUTE STATE
I-270 MO

DISTRICT SHEET NO.
SL 3

COUNTY
ST. LOUIS

JOB NO.
JSL0021

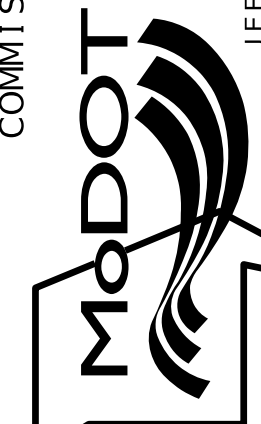
CONTRACT ID.

PROJECT NO.

BRIDGE NO.

DATE	DESCRIPTION
6/4/26	PWMT. REPAIR TABLE REVISION

MISSOURI HIGHWAYS AND TRANSPORTATION COMMISSION



105 WEST CAPITOL
JEFFERSON CITY, MO 65102
1-888-ASK-MODOT (1-888-275-6636)

HDR Engineering, Inc.
1001 Highlands Plaza Drive
Suite 200
St. Louis, MO 63110-1337
314-425-8300
Certificate of Authority: 000856

IF A SEAL IS PRESENT ON THIS SHEET IT HAS BEEN ELECTRONICALLY SEALED AND DATED.

ALTERNATE O (ASPHALT) - PAVEMENT AND BASE - MO 367 AND RAMP 8-D (I-270/MO 367)

SHEET NO.	FROM STA	TO STA	ROADWAY	DIRECTION	LOCATION	10.5" HMA SP125CLP (PG 70-22) SY	6" TYPE 5 AGGREGATE BASE SY	REMARKS
16	1+32.05	3+42.00	RAMP 8-D		RT/LT	961.2	961	ALL
16	3+42.00	7+67.00	RAMP 8-D		RT	352.8	353	RIGHT SHOULDER
16	7+67.00	9+32.08	RAMP 8-D		RT/LT	668.6	669	ALL
16	521+53.00	532+41.00	MO 367	SOUTHBOUND	RT	1809.8	1810	OUTSIDE LANE AND SHOULDER
16	524+59.00	526+70.00	MO 367	SOUTHBOUND	LT	60.4	60	INSIDE SHOULDER
16	524+59.00	526+70.00	MO 367	NORTHBOUND	LT	60.3	60	INSIDE SHOULDER
SUBTOTAL						3913.1	3913	
PAY TOTAL						3913.1		

ALTERNATE P (CONCRETE) - PAVEMENT AND BASE - MO 367 AND RAMP 8-D (I-270/MO 367)

SHEET NO.	FROM STA	TO STA	ROADWAY	DIRECTION	LOCATION	10.5" PCCP SY	6" TYPE 5 AGGREGATE BASE SY	REMARKS
16	1+32.05	3+42.00	RAMP 8-D		RT/LT	961.2	961	ALL
16	3+42.00	7+67.00	RAMP 8-D		RT	352.8	353	RIGHT SHOULDER
16	7+67.00	9+32.08	RAMP 8-D		RT/LT	668.6	669	ALL
16	521+53.00	532+41.00	MO 367	SOUTHBOUND	RT	1809.8	1810	OUTSIDE LANE AND SHOULDER
16	524+59.00	526+70.00	MO 367	SOUTHBOUND	LT	60.4	60	INSIDE SHOULDER
16	524+59.00	526+70.00	MO 367	NORTHBOUND	LT	60.3	60	INSIDE SHOULDER
SUBTOTAL						3913.1	3913	
PAY TOTAL						3913.1		

PAVEMENT REPAIR

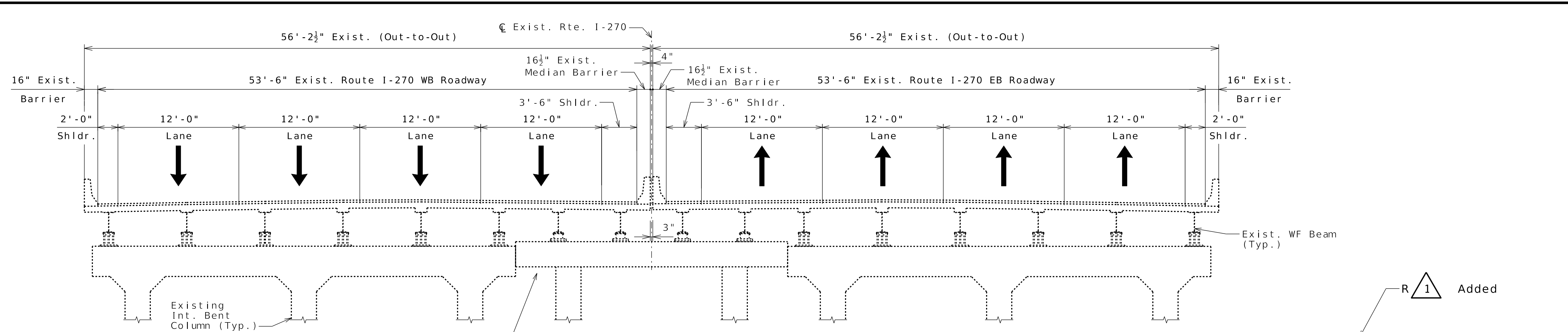
SHEET NO.	STA	ROADWAY	LOC.	NUMBER AND SIZE OF PAVEMENT REPAIR	FURNISHING & PLACING CONCRETE MATERIAL FOR FULL DEPTH PVM'T. REPAIR SY	SUBGRADE COMPACTION (6 IN. DEPTH) (PVM'T. REPAIR) SY	TYPE 1 OR 5 AGGR. FOR BASE (4 IN. THICK) (PVM'T. REPAIR) SY	FULL DEPTH PVM'T. REPAIR SAW CUT (FOR PERIMETER & INTERNAL SAW CUTS) LF	DOWEL BAR (DRILLING, FURNISHING, & INSTALLATION FOR FULL DEPTH PVM'T. REPAIR) EA	DOWEL BAR (FURNISHING & INSTALLATION WITH BASKETS) FOR FULL DEPTH PVM'T. REPAIR EA	REMARKS
N/A	600+14.00	I-270	LT	1 EA @ 12' x 6'	8.0	8	8	36	20		WB LANE 2
N/A	602+50.00	I-270	LT	1 EA @ 24' x 12'	32.0	32	32	72	20	10	WB LANE 2
N/A	609+00.00	I-270	LT	1 EA @ 24' x 12'	32.0	32	32	72	20	10	WB LANE 2
N/A	616+10.00	I-270	LT	1 EA @ 12' x 6'	8.0	8	8	36	20		WB LANE 3
N/A	661+92.00	I-270	LT	1 EA @ 12' x 24'	32.0	32	32	72	40		WB LANES 2-3
N/A	668+70.00	I-270	LT	1 EA @ 12' x 12'	16.0	16	16	48	20		WB LANE 3
N/A	684+70.00	I-270	LT	1 EA @ 24' x 12'	32.0	32	32	72	20	10	WB LANE 2
SUBTOTAL					160.0	160	160	408	160	30	
PAY TOTAL					160.0	160	160	408	160	30	

NOTE: THE EXACT LOCATION OF THE PAVEMENT REPAIRS SHALL BE AT THE DIRECTION OF THE ENGINEER.

1

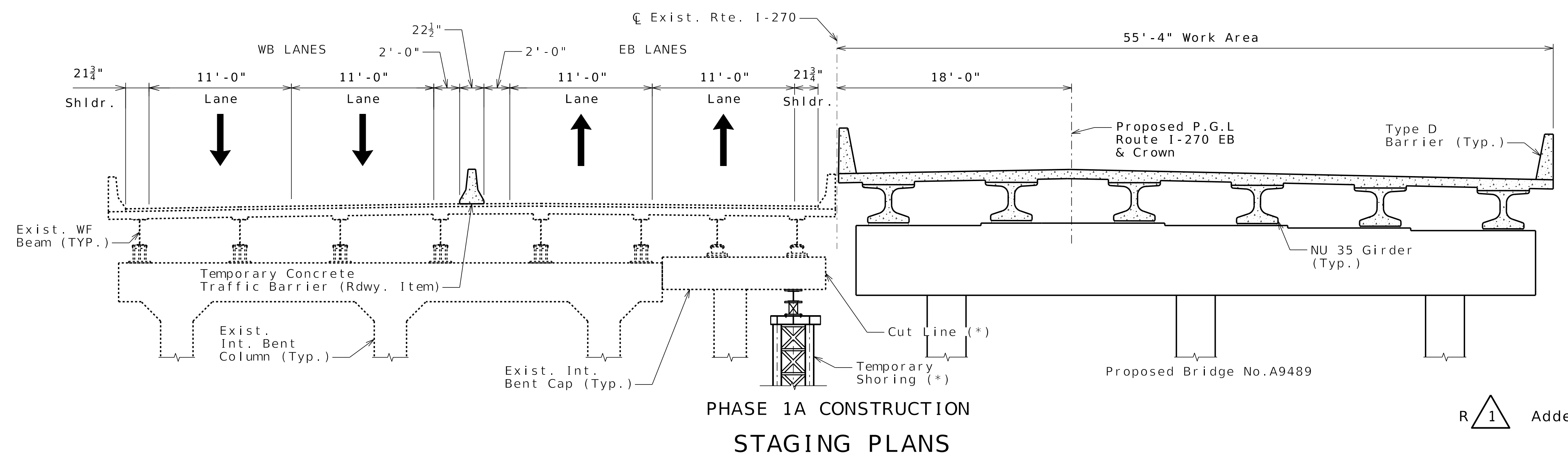
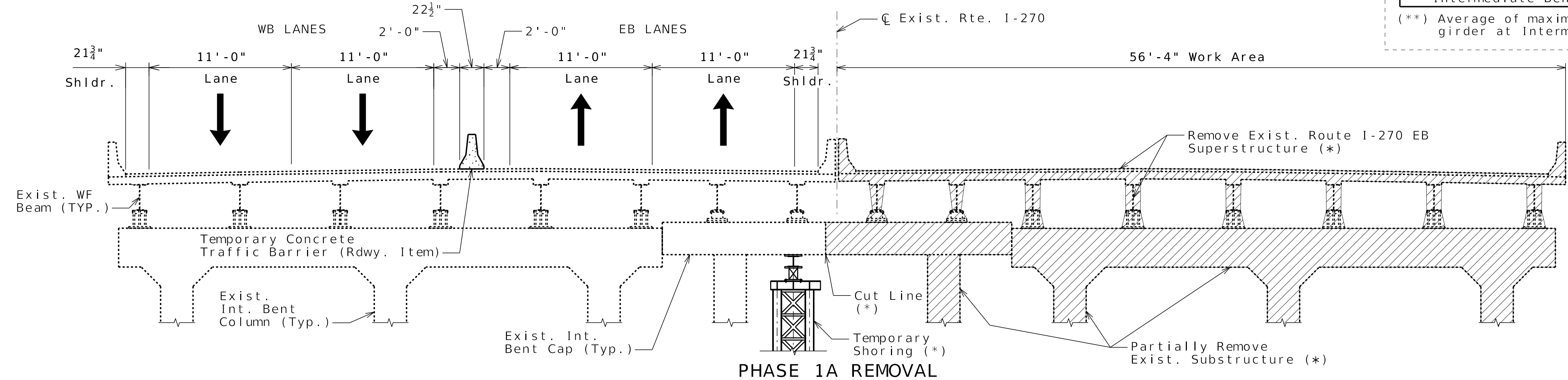
SUMMARY OF QUANTITIES
SHEET 9 OF 19

WARNING SIGNS										GUIDE SIGNS										EFFECTIVE: 07-01-2025		
SIGN	SIZE	AREA	QTY	TOTAL	QTY	TOTAL	SIGN	DESCRIPTION		SIGN	SIZE	AREA	QTY	TOTAL	QTY	TOTAL	SIGN	DESCRIPTION	ITEM	TOTAL	DESCRIPTION	
IN.	IN.	SQ.FT.	EACH	SQ.FT.	EACH	SQ.FT.	NO.			IN.	SQ.FT.	EACH	SQ.FT.	EACH	SQ.FT.	NO.		NUMBER	QTY			
WO1-1L	48X48	16.00						TURN (SYMBOL LEFT)		E05-1	36X48	12.00	1	12.00			49	GORE EXIT	6122008	(1)**	IMPACT ATTENUATOR 40 MPH (SAND BARRELS)	
WO1-1R	48X48	16.00						TURN (SYMBOL RIGHT)		E05-2	48X36	12.00							6122010		IMPACT ATTENUATOR 45 MPH (SAND BARRELS)	
WO1-2L	48X48	16.00						CURVE (SYMBOL LEFT)		E05-2a	48X36	12.00	1	12.00			30	EXIT CLOSED	6122012		IMPACT ATTENUATOR 50 MPH (SAND BARRELS)	
WO1-2R	48X48	16.00						CURVE (SYMBOL RIGHT)		GO20-1	60X24	10.00	2	20.00			1	ROAD WORK NEXT XX MILES	6122014	(1)**	IMPACT ATTENUATOR 55 MPH (SAND BARRELS)	
WO1-3L	48X48	16.00						REVERSE TURN (SYMBOL LEFT)		GO20-2	48X24	8.00	2	16.00			26	END ROAD WORK	6122017		IMPACT ATTENUATOR 60 MPH (SAND BARRELS)	
WO1-3R	48X48	16.00						REVERSE TURN (SYMBOL RIGHT)		GO20-4	36X18	4.50						6122019		IMPACT ATTENUATOR 65 MPH (SAND BARRELS)		
WO1-4L	48X48	16.00						REVERSE CURVE (SYMBOL LEFT)		GO20-4a	42X30	8.75						6122020	(1)**	REPLACEMENT SAND BARREL		
WO1-4R	48X48	16.00	1	16.00			61R	REVERSE CURVE (SYMBOL RIGHT)		GO20-4a	18X12	1.50						6122030		IMPACT ATTENUATOR (RELOCATION)		
WO1-4bL	48X48	16.00	6	96.00			32L	DOUBLE ARROW REVERSE CURVE (SYMBOL LEFT)		GO20-5aP	36X24	6.00	16	96.00			54	WORK ZONE (PLAQUE)	6122040		WORK ZONE CRASH CUSHION (NARROW)	
WO1-4bR	48X48	16.00	6	96.00			32R	DOUBLE ARROW REVERSE CURVE (SYMBOL RIGHT)		MO4-8a	24X18	3.00	7	21.00			52	END DETOUR	6122041	(1)**	WORK ZONE CRASH CUSHION (RELOCATION)	
WO1-4cL	48X48	16.00						TRIPLE ARROW REVERSE CURVE (SYMBOL LEFT)		MO4-9L	48X36	12.00						6123001	2	TRUCK MOUNTED ATTENUATOR (TMA)		
WO1-4cR	48X48	16.00						TRIPLE ARROW REVERSE CURVE (SYMBOL RIGHT)		MO4-9R	48X36	12.00						6139901	(1)**	MISC. WELDING OF GRATES ON DROP INLETS		
WO1-6	60X30	12.50						HORIZONTAL ARROW (SYMBOL)		MO4-9P	48X12	4.00						6161012		BUOYS (BOATS KEEP OUT)		
WO1-6a	72X36	18.00						HORIZ. ARROW (SYMBOL ON PERMANENT BARRICADE)		MO4-10L	48X18	6.00						6161013		BUOYS (NO WAKE)		
WO1-7	60X30	12.50						DOUBLE HEAD HORIZONTAL ARROW (SYMBOL)		MO4-10R	48X18	6.00						6161014		SPECIAL SIGN ASSEMBLY (BOATS KEEP OUT)		
WO1-7a	72X36	18.00						DOUBLE HEAD HORIZ. ARROW (SYMBOL ON PERM. BARR.)		REGULATORY SIGNS										6161020		CHANNELIZER (DRUM-LIKE)
WO1-8	18X24	3.00						CHEVRON (SYMBOL)		R1-1	48X48	13.25							6161022		CHANNELIZER (CONE)	
WO1-8a	30X36	7.50						CHEVRON (SYMBOL FOR DIVIDED HIGHWAYS)		R1-2	48TRI.	6.93	1	6.93			13	YIELD	6161025	470	CHANNELIZER (TRIM-LINE)	
WO3-1	48X48	16.00						STOP AHEAD (SYMBOL)		R1-2a	36X36	9.00							6161026		CHANNELIZER (VERTICAL PANEL)	
WO3-2	48X48	16.00	1	16.00			40	YIELD AHEAD (SYMBOL)		R1-3P	30X12	2.50							6161030	18	TYPE 3 MOVEABLE BARRICADE	
WO3-3	48X48	16.00						SIGNAL AHEAD (SYMBOL)		R2-1	36X48	12.00	26	312.00			4/25	SPEED LIMIT XX	6161033	120	DIRECTION INDICATOR BARRICADE	
WO3-4	48X48	16.00						BE PREPARED TO STOP		R3-1	48X48	16.00							6161040	7	FLASHING ARROW PANEL	
WO3-5	48X48	16.00	2	32.00			56	SPEED LIMIT AHEAD		R3-2	48X48	16.00							6161047		TYPE 3 OBJECT MARKER	
WO4-1L	48X48	16.00						MERGE (SYMBOL FROM LEFT)		R3-3	36X36	9.00							6161055		SEQUENTIAL FLASHING WARNING LIGHT	
WO4-1R	48X48	16.00						MERGE (SYMBOL FROM RIGHT)		R3-4	48X48	16.00							6161070		TUBULAR MARKER	
WO4-2L	48X48	16.00	2	32.00			6A	MERGE (LEFT)		R10-6	24X36	6.00							6161095		RADAR SPEED ADVISORY SYSTEM	
WO4-2R	48X48	16.00	4	64.00			6B	MERGE (RIGHT)		R11-2	48X30	10.00	5	50.00			29	ROAD CLOSED			CHANGEABLE MESSAGE SIGN, COMMISSION FURNISHED/RETAINED	
WO5-1	48X48	16.00	6	96.00			43	ROAD/BRIDGE/RAMP NARROWS		R11-3a	60X30	12.50							6161096		CHANGEABLE MESSAGE SIGN WITHOUT COMM. INTERFACE, CONTRACTOR FURNISHED/RETAINED	
WO5-3	48X48	16.00						ONE LANE BRIDGE		R11-4	60X30	12.50							6161098A	7**	CHANGEABLE MESSAGE SIGN WITH COMM. INTERFACE, CONTRACTOR FURNISHED/RETAINED	
WO5-5	48X48	16.00						NARROW LANES		CONST-3A	60X48	20.00	2	40.00			53	FINE SIGN	6161099		CHANGEABLE MESSAGE SIGN WITH COMM. INTERFACE, CONTRACTOR FURNISHED/RETAINED	
WO6-1	48X48	16.00						DIVIDED HIGHWAY (SYMBOL)		CONST-3X	56X12	4.67							6162000A		WORK ZONE TRAFFIC SIGNAL SYSTEM	
WO6-2	48X48	16.00						DIVIDED HIGHWAY END (SYMBOL)		MISCELLANEOUS SIGNS										6162002	14**	TEMPORARY LONG-TERM RUMBLE STRIPS
WO6-3	48X48	16.00						TWO WAY TRAFFIC (SYMBOL)		CONST-5	96X48	32.00	2	64.00			61	POINT OF PRESENCE			TEMPORARY TRAFFIC BARRIER, CONTRACTOR FURNISHED/RETAINED	
WO7-3a	30X24	5.00	2	10.00			44A	NEXT XX MILES (PLAQUE)		CONST-8	48X36	12.00	2	24.00			60	WORK ZONE NO PHONE ZONE			TEMPORARY TRAFFIC SIGNALS	
WO8-1	48X48	16.00						BUMP		W4-3R	48X48	16.00	1	16.00			70R	ADDED LANE RIGHT	6173600D	(1)**	CONTRACTOR FURNISHED/RETAINED	
WO8-2	48X48	16.00						DIP		W4-3L	48X48	16.00	1	16.00			70L	ADDED LANE LEFT			TEMP. TRAFFIC BARRIER ANCHORED, CONTRACTOR FURNISHED/RETAINED	
WO8-3	48X48	16.00						PAVEMENT ENDS		W24-1AR	48X48	16.00	6	96.00			57	DOUBLE REVERSE CURVE	6173700B	(1)**	CONTRACTOR FURNISHED/RETAINED	
WO8-4	48X48	16.00						SOFT SHOULDER		SPECIAL	48X48	16.00	2	32.00			90	RUMBLE STRIPS AHEAD			TEMP. TRAFFIC BARRIER STIFFNESS TRANSITION CONTRACTOR FURNISHED/RETAINED	
WO8-5	48X48	16.00						SLIPPERY WHEN WET (SYMBOL)		SPECIAL	96X78	52.00	1	52.00			101	SPECIAL 367 EXIT	6173706	(1)**	CONTRACTOR FURNISHED/RETAINED	
WO8-6	48X48	16.00						TRUCK CROSSING		SPECIAL	96X78	52.00	1	52.00			102	SPECIAL BELLEFONTAINE EXIT			TEMP. TRAFFIC BARRIER HEIGHT TRANSITION, CONTRACTOR FURNISHED/RETAINED	
WO8-6c	48X48	16.00						TRUCK ENTRANCE		SPECIAL	72X78	39.00	1	39.00			103	SPECIAL 367 EXIT ARROW	6174000A		RELOCATING TEMPORARY TRAFFIC BARRIER	
WO8-7	36X36	9.00						LOOSE GRAVEL		SPECIAL	96X48	32.00	2	64.00			104	SPECIAL SOUTH 367 DETOUR	6175010A		RELOCATING TEMP. TRAFFIC BARRIER ANCHORED	
WO8-7a	36X36	9.00						FRESH OIL / LOOSE GRAVEL		SPECIAL	90X42	26.25	1	26.25			105	SPECIAL EXIT 32 CLOSED	6175011B		RELOCATING TEMP. TRAFFIC BARRIER STIFFNESS	
WO8-9	48X48	16.00						LOW SHOULDER		SPECIAL	96X48	32.00	3	96.00			106	SPECIAL 270 WEST FOLLOW DETOUR	6175013		RELOCATING TEMP. TRAFFIC BARRIER HEIGHT	
WO8-11	48X48	16.00						UNEVEN LANES		SPECIAL	96X48	32.00	2	64.00			107	SPECIAL 270 EAST FOLLOW DETOUR	6175020A		TEMPORARY RAISED PAVEMENT MARKER	
WO8-12	48X48	16.00						NO CENTER LINE		SPECIAL	96X54	36.00	1	36.00			108	SPECIAL USE EXIT 33 DETOUR	6208064A	1313**	TEMPORARY TRAFFIC SIGNALS	
WO8-15	48X48	16.00						GROOVED PAVEMENT		SPECIAL	96X54	36.00	1	36.00			109	SPECIAL USE EXIT 31A DETOUR	9029400		TEMPORARY TRAFFIC SIGNALS AND LIGHTING	
WO8-15P	30X24	5.00	2	10.00			90A	MOTORCYCLE (PLAQUE)		SPECIAL	54X42	15.75	7	110.25			61A	DETOUR BELLEF STRT ARROW	9029401		TEMPORARY TRAFFIC SIGNALS SPECIAL	
WO8-17L	48X48	16.00						SHOULDER DROP-OFF (SYMBOL LEFT)		SPECIAL	54X42	15.75	4	63.00			61B	DETOUR BELLEF DIAG ARROW	9029901	(1)**	TEMPORARY TRAFFIC CONTROL	
WO8-17R	48X48	16.00						SHOULDER DROP-OFF (SYMBOL RIGHT)		SPECIAL	54X36	13.50	4	54.00			61C	DETOUR BELLEF RT ARROW			1 LUMP SUM	
WO8-17P	30X24	5.00						SHOULDER DROP-OFF (PLAQUE)		SPECIAL	54X42	15.75	4	63.00			61D	DETOUR BELLEF ST RT ARROW			* NO DIRECT PAY WILL BE MADE FOR RELOCATION OF CONSTRUCTION SIGNING OR DEVICES	
W10-1	42RND.	9.62						RAILROAD CROSSING		SPECIAL	54X36	13.50	4	54.00			61E	DETOUR BELLEF LT ARROW			** NOT INCLUDED IN LUMP SUM TEMPORARY TRAFFIC CONTROL	
WO12-1	24X24	4.00						DOUBLE DOWN ARROW (SYMBOL)		SPECIAL	54X42	15.75	4	63.00			61F	DETOUR BELLEF ST LT ARROW			(1) SEE SUMMARY TABLE ON PREVIOUS SHEET	
WO12-2	48X48	16.00						LOW CLEARANCE (SYMBOL)		SPECIAL	36X78	19.50	1	19.50			62A	DETOUR 367 SOUTH STRT ARROW			NOTES:	
WO12-2x	24X18	3.00						LOW CLEARANCE (PLAQUE)		SPECIAL	36X78	19.50	3	58.50			62B	DETOUR 367 SOUTH DIAG ARROW			ALL TRAFFIC CONTROL ITEMS INCLUDED IN PAY ITEM 616-99.01	
WO12-2a	84X24	14.00						OVERHEAD LOW CLEARANCE (FEET AND INCHES)		SPECIAL	36X78	19.50	2	39.00			62C	DETOUR 367 SOUTH LEFT ARROW			TEMPORARY TRAFFIC CONTROL, LUMP SUM, UNLESS OTHERWISE	
WO12-4	120X60	50.00						LOW CLEARANCE XX FT XX IN XX MILES AHEAD		SPECIAL	36X78	19.50	2	39.00			62D	DETOUR 367 SOUTH ST LT ARROW			NOTED IN THE PLANS. THESE QUANTITIES ARE ONLY AN ESTIMATE	
WO12-5	120X60	50.00						WIDTH RESTRICTION XX FT XX IN XX MILES AHEAD		SPECIAL	36X78	19.50	1	19.50			63A	DETOUR 270 WEST STRT ARROW			AND ARE SUBJECT OT CHANGE BASED ON FIELD CONDITIONS.	
WO13-1	30X30	6.25						ADVISORY SPEED (PLAQUE)		SPECIAL	36X78	19.50	2	39.00			63B	DETOUR 270 WEST LEFT ARROW			SIGN QUANTITIES HAVE BEEN ESTIMATED. TEMPORARY TRAFFIC CONTROL SHALL FOLLOW AT A MINIMUM MUTCD STANDARDS, LATEST EDITION.	
WO16-2	30X24	5.00						XXX FEET (PLAQUE)		SPECIAL	36X78	19.50	1	19.50			63C	DETOUR 270 WEST ST LT ARROW			ALL WARNING SIGNS SHALL HAVE FLUORESCENT SHEETING.	
WO16-3	30X24	5.00						X MILE (PLAQUE)		SPECIAL	36X78	19.50	1	19.50			63D	DETOUR 270 WEST RB THRU ARROW			DISCLAIMER	
WO20-1	48X48	16.00	24	384.00			2	ROAD/BRIDGE/RAMP WORK AHEAD		SPECIAL	36X78	19.50	2	39.00			64A	DETOUR 270 EAST STRT ARROW			THE PROFESSIONAL WHOSE SIGNATURE AND PERSONAL SEAL APPEAR HEREON ASSUMES RESPONSIBILITY ONLY FOR WHAT APPEARS ON THIS PAGE, AND DISCLAIMS (PURSUANT TO SECTION 327.411	
WO20-2	48X48	16.00	8	128.00			18	DETOUR AHEAD		SPECIAL	36X78	19.50	5	97.50			64B	DETOUR 270 EAST LEFT ARROW			RSMO) SPECIFICATION, ESTIMATES, REPORTS, OR OTHER	
WO20-3	48X48	16.00	9	144.00			20/20A	ROAD/RAMP CLOSED AHEAD		SPECIAL	36X78	19.50	4	78.00			64C	DETOUR 270 EAST ST LT ARROW			DOCUMENTS OR INSTRUMENTS NOT SEALED BY THE UNDERSIGNED	
WO20-4	48X48	16.00						ONE LANE ROAD AHEAD		SPECIAL	36X78	19.50	5	97.50			64D	DETOUR 270 EAST RIGHT ARROW			PROFESSIONAL RELATING TO OR INTENDED TO BE USED FOR ANY	
WO20-5	48X48	16.00	10	160.00			5	RIGHT/CENTER/LEFT LANE CLOSED AHEAD		SPECIAL	36X78	19.50	4	78.00			64E	DETOUR 270 EAST DIAG ARROW			PART OR PARTS OF THE PROJECT TO WHICH THIS PAGE REFERS.	
WO20-5a	48X48	16.00						2 RIGHT/CENTER/LEFT LANES CLOSED AHEAD		SPECIAL	36X78	19.50	4	78.00			64G	DETOUR 270 EAST ST RT ARROW				
WO20-6a	48X48	16.00	4	64.00			6	RIGHT/CENTER/LEFT LANE CLOSED		SPECIAL	36X78	19.50	3	58.50			65A	DETOUR 367 NORTH STRT ARROW				
WO20-7a	48X48	16.00						FLAGGER (SYMBOL)		SPECIAL	36X78	19.50	4	78.00			65B	DETOUR 367 NORTH DIAG ARROW				
WO21-2	36X36	9.00						FRESH OIL		SPECIAL	36X78	19.										



Estimated Temporary Shoring Service (Unfactored) Reactions (kip)		
Location	Dead Load	Live Load with Impact
Intermediate Bents (**)	62	93

(**) Average of maximum reactions for exterior and adjacent interior girder at Intermediate Bent Nos. 2, 3 & 4 over Temporary Shoring.



(*) Contractor is responsible for the stability of the shared substructure during partial removal. Location of the cut line and design of temporary shoring tower to be determined by the contractor.

Notes:
 The cost of Removal of Bridges shall be considered completely covered by the contract lump sum price for Removal of Bridges (J0847) for Bridge No. A9489.

☒ Denotes Removal

The temporary support arrangement shown is intended as a schematic only. Number of jacking supports required to support the existing substructure cap to be designed by the contractor. Design calculations to be submitted for Engineer's approval before fabrication of temporary supports.

The contractor shall be responsible for the design of the Temporary Supports and the Temporary Foundations.

The contractor shall submit drawings and calculations signed and sealed by a Professional Engineer in the State of Missouri to the Engineer for review a minimum of 4 weeks prior to installation of any Temporary Supports and Temporary Foundations.

The service loads provided are based on a structural analysis model of the existing structure provided by the Commission. Contractor to verify service loads during design of the Temporary Supports and Temporary Foundations.

Temporary concrete foundations shall be designed for a maximum bearing stress of 1,900 psf.

Payment for furnishing all materials, labor and equipment necessary to design, construct, maintain, and remove the Temporary Supports shall be completely covered by the contract lump sum price for "Temporary Shoring".

DATE PREPARED 6/4/2026	
ROUTE I-270	STATE MO
DISTRICT BR	SHEET NO. 4
COUNTY ST. LOUIS	
JOB NO. JSL0021	
CONTRACT ID.	
PROJECT NO.	
BRIDGE NO. A9489	

DESCRIPTION	DATE
ADDED TEMP. SHORING LOADS	6-5-26

MISSOURI HIGHWAYS AND TRANSPORTATION COMMISSION

105 WEST CAPITOL
JEFFERSON CITY, MO 65102
1-888-ASK-MODOT (1-888-275-6636)

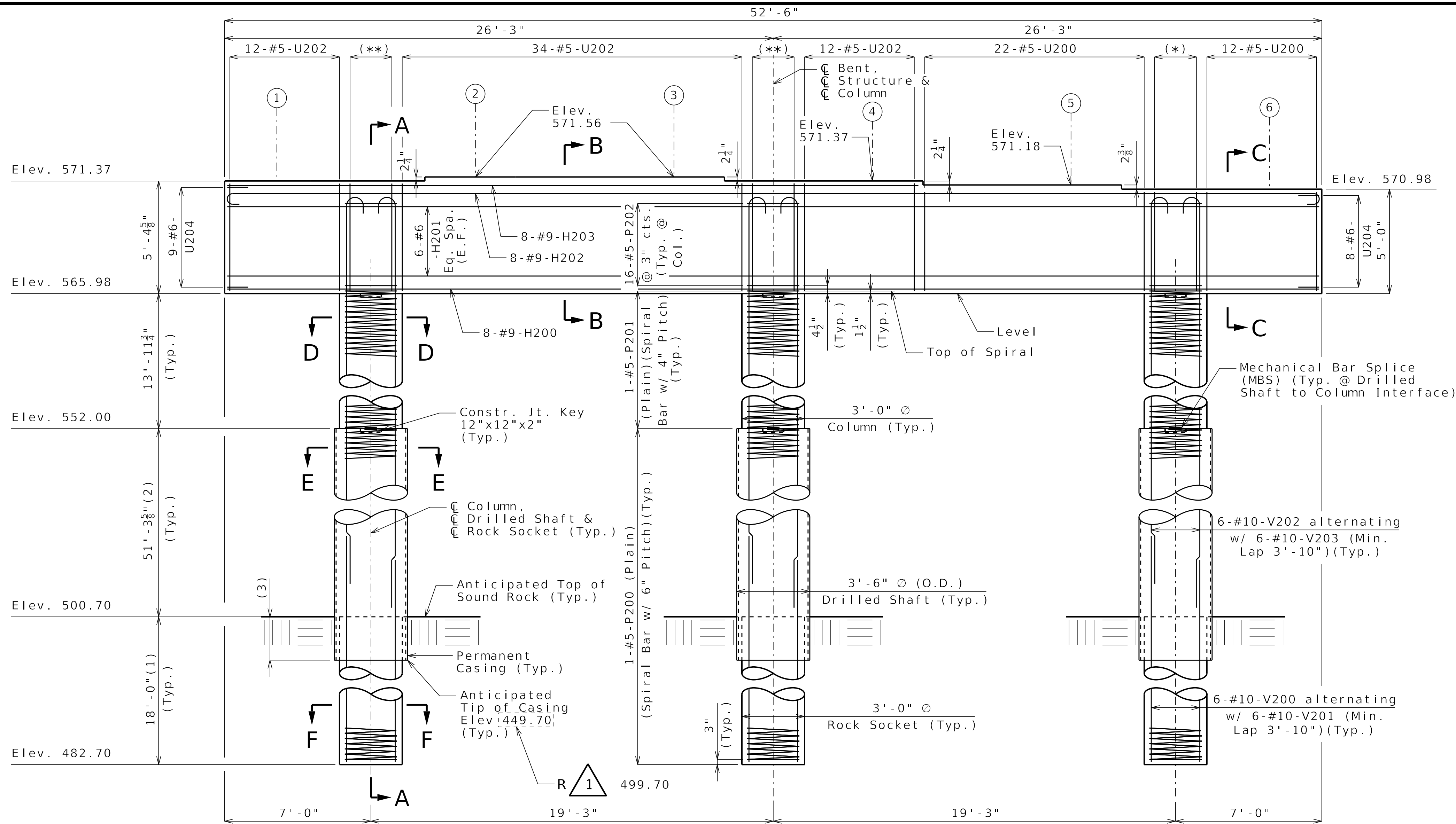
HDR Engineering, Inc.
 1001 Highlands Plaza Drive
 Suite 200
 St. Louis, MO 63110
 314-426-8300
 Certificate of Authority: 000856

Detailed September 2025
 Checked September 2025

Note: This drawing is not to scale. Follow dimensions.

Sheet No. 4 of 40

R 1 REVISED 06-05-2026



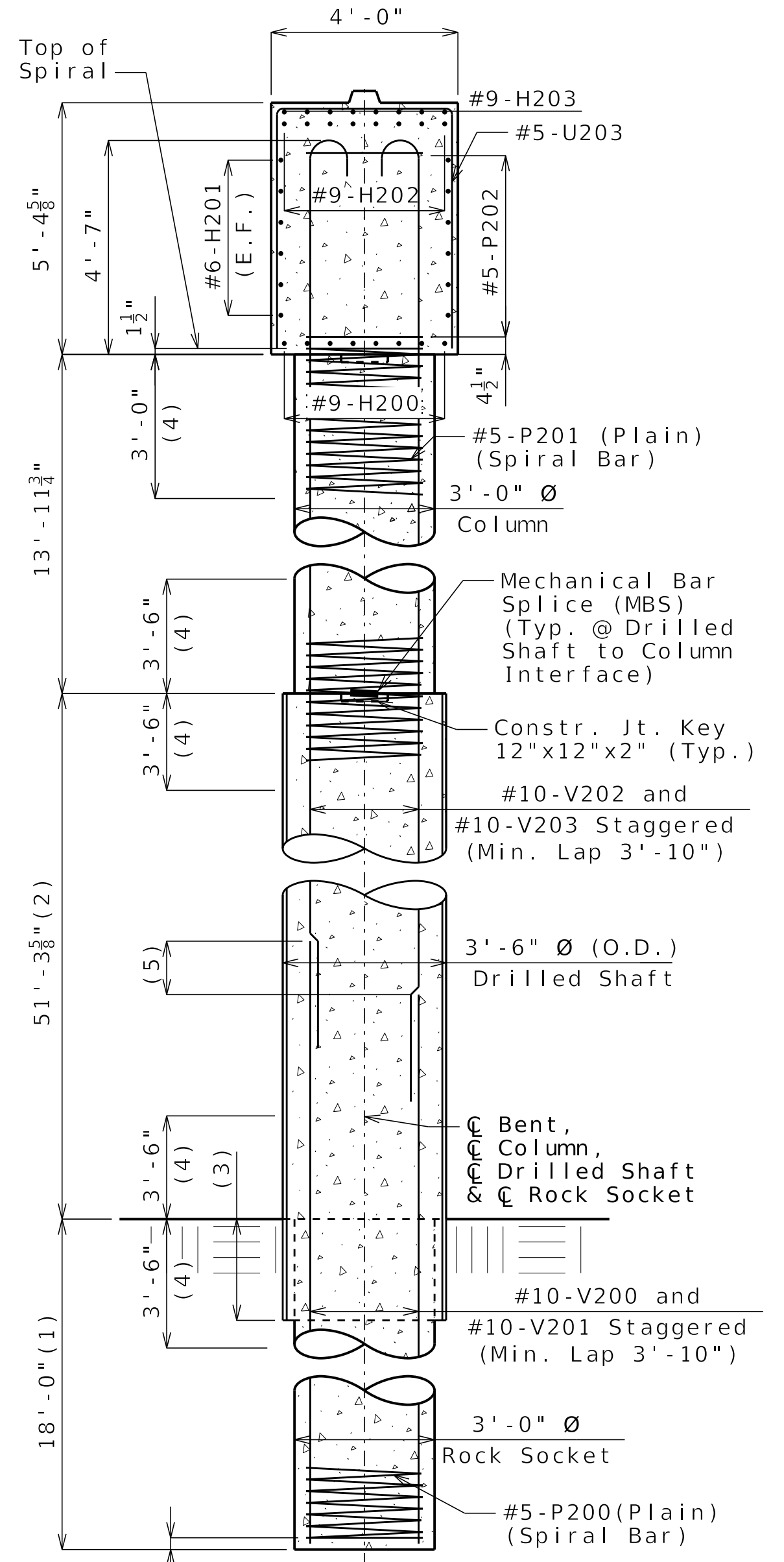
ELEVATION
(Beam keys not shown for clarity.)

- (1) Pay Item Rock Sockets (3 ft. 0 in. Dia.)
- (2) Pay Item Drilled Shafts (3 ft. 6 in. Dia.)
- (*) 5-#5-U201
- (**) 5-#5-U203
- (3) Set Steel Casing into sound rock in accordance with Sec 701 (Typ.)
- (4) Lapping of spiral and vertical reinforcement is not allowed in this zone.
- (5) Lap splices and mechanical bar splices, if used, are to be alternately staggered at least 2'-0" at two different locations.

Substructure Quantity Table for Intermediate Bent No. 2

Item	Quantity
Drilled Shafts (3 ft. 6 in. Dia.)	linear foot 154
Rock Sockets (3 ft. 0 in. Dia.)	linear foot 54
Video Camera Inspection	each 3
Foundation Inspection Holes	linear foot 84
Sonic Logging Testing	each 3
Class B Concrete (Substructure)	cu. yard 52.6
Reinforcing Steel (Galvanized)	pound 27,770

These quantities are included in the Estimated Quantities table on Sheet No. 2.
 All reinforcement in drilled shafts and rock sockets is included in the substructure quantities.
 The cost of any required excavation to the top of the drilled shafts will be considered completely covered by the contract unit price for other items.



SECTION A-A

Notes:

The hooks of vertical bars embedded in the beam cap shall not be turned outward, away from the column core.

Work this sheet with Sheet No. 13.

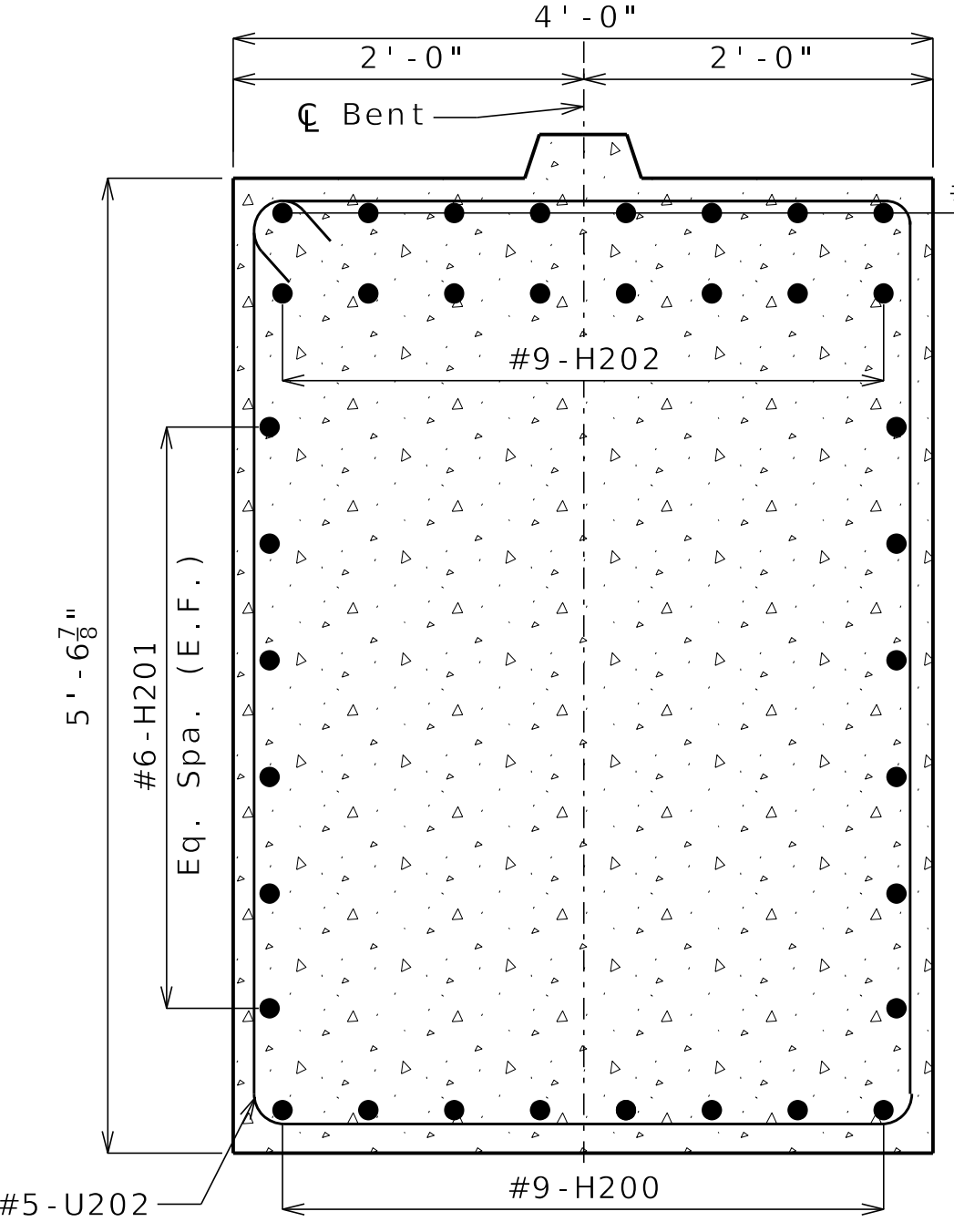
Thickness of permanent steel casing shall be in accordance with Sec 701.

An additional 4 feet has been added to V-bar lengths and an additional 4 feet of height has been added to P200 and P201 length in the quantities, if required, for possible change in drilled shaft or rock socket length. The additional V-bar length shall be cut off or included in the reinforcement lap if not required. The additional P-bar length shall be cut off, with allowance for maintaining the required 1-1/2 turns at the end of spiral length. The spiral pitch shall be spaced similarly to that shown in elevation, if required, but not less than 6-inch centers in the drilled shaft and rock socket.

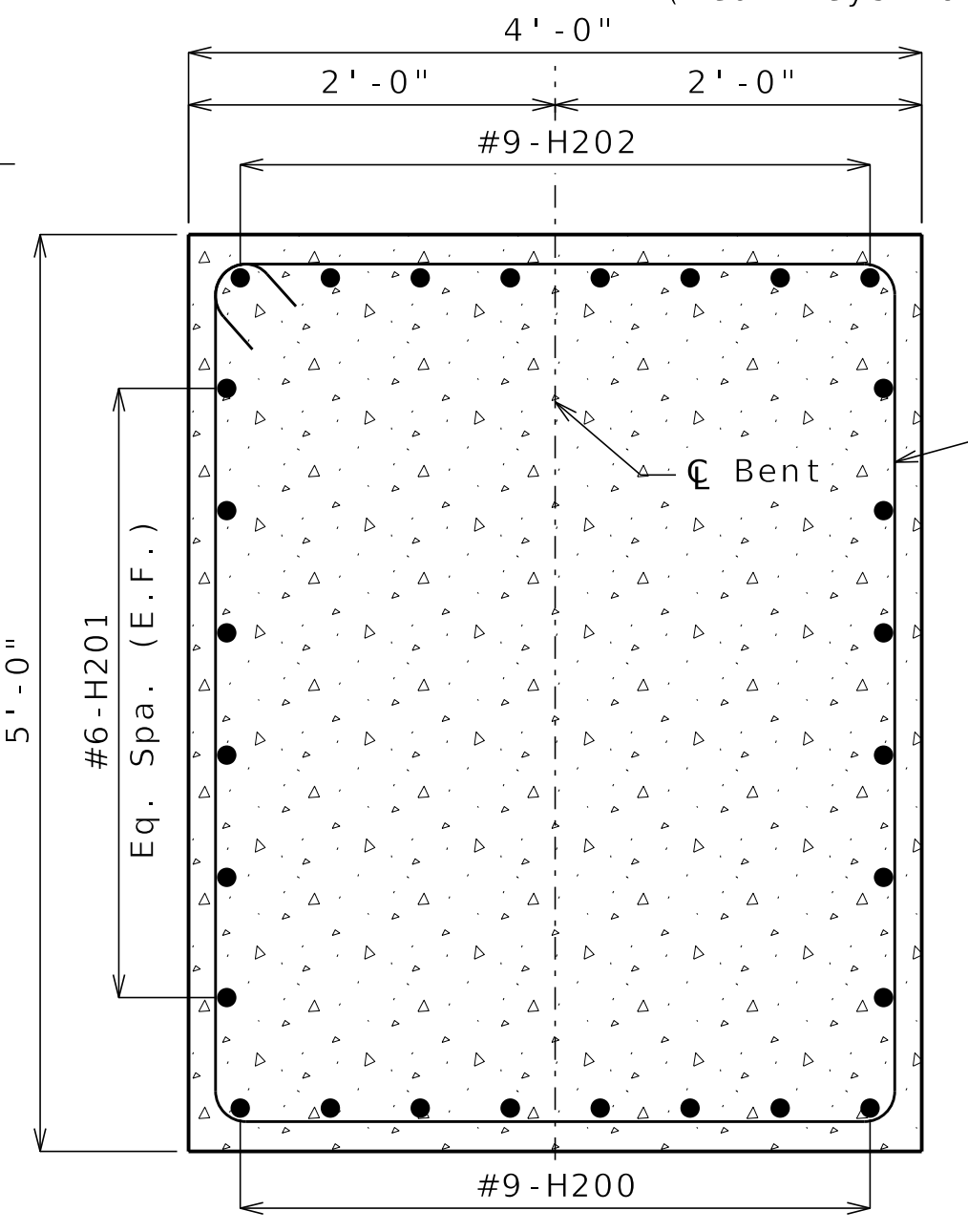
Sonic logging testing shall be performed on all drilled shafts and rock sockets.

E.F. Denotes Each Face.

① - Denotes Girder Number.



SECTION B-B



SECTION C-C

INTERMEDIATE BENT NO. 2 DETAILS

Detailed September 2025
 Checked September 2025

Note: This drawing is not to scale. Follow dimensions.

Sheet No. 12 of 40

R 1 REVISED 06-08-2026

DATE PREPARED 6/8/2026	
ROUTE I-270	STATE MO
DISTRICT BR	SHEET NO. 12
COUNTY ST. LOUIS	
JOB NO. JSL0021	
CONTRACT ID.	
PROJECT NO.	
BRIDGE NO. A9489	
DATE 6-8-26	DESCRIPTION REVISED CASING ELEVATION

MISSOURI HIGHWAYS AND TRANSPORTATION COMMISSION

MoDOT

105 WEST CAPITOL
 JEFFERSON CITY, MO 65102
 1-888-ASK-MODOT (1-888-275-6636)

HDR Engineering, Inc.

1001 Highlands Plaza Drive
 Suite 200
 St. Louis, MO 63110
 314-425-8300
 Certificate of Authority: 000856