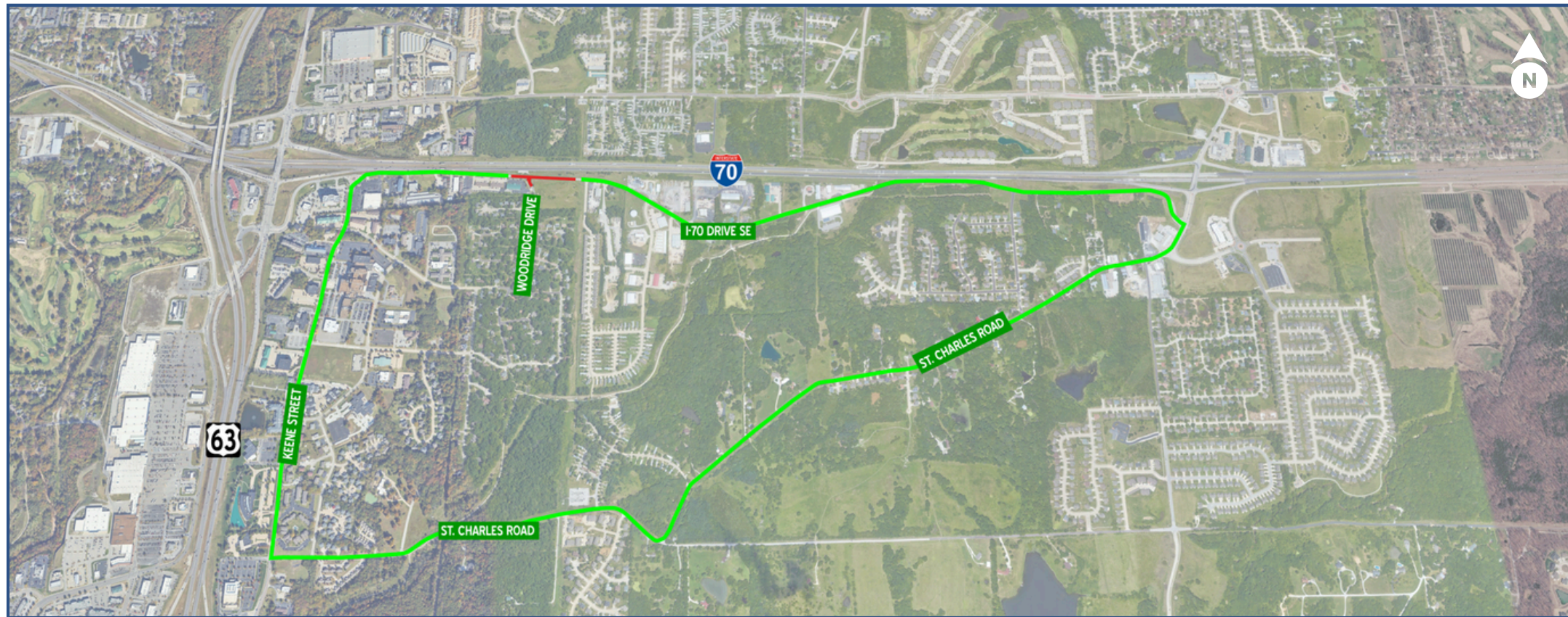


IMPROVE I-70: COLUMBIA TO KINGDOM CITY



UPCOMING CLOSURE: I-70 DRIVE SOUTHEAST



WHAT: A 300-day closure of the I-70 Drive Southeast

WHERE: I-70 Drive Southeast from Glenstone Drive to just west of Woodridge Drive.

WHEN: From Monday, March 2, 2026, until late December 2026.

WHY: This closure is necessary for the construction of new I-70 bridges, which will facilitate a new connection from the future Hanover Blvd. roundabout on Clark Lane, located north of I-70, to the underpass of I-70 that connects to I-70 Drive Southeast. All businesses will remain accessible. *Flip page for full size rendering of this new design.*

DETOUR: A signed detour will be in place using St. Charles Rd. and Keene St. **NOTE: St. Charles Rd. over I-70 will CLOSE for the bridge to be replaced beginning in early April.**

www.modot.org/improvei70/columbiakingdomcity

IMPROVE I-70: COLUMBIA TO KINGDOM CITY



FUTURE IMPROVEMENTS AT I-70 & HANOVER BLVD.

